

# Anti-Heme Oxygenase 1 antibody ab85309

★★★★★ [3 Abreviews](#) [5 References](#) [5 图像](#)

### 概述

产品名称	Anti-Heme Oxygenase 1抗体
描述	兔多克隆抗体to Heme Oxygenase 1
宿主	Rabbit
经测试应用	适用于: WB, IHC-P
种属反应性	与反应: Mouse, Rat, Human
免疫原	Synthetic peptide corresponding to Rat Heme Oxygenase 1 aa 150-250 conjugated to keyhole limpet haemocyanin. (Peptide available as <a href="#">ab94374</a> )

### 常规说明

The Life Science industry has been in the grips of a reproducibility crisis for a number of years. Abcam is leading the way in addressing this with our range of recombinant monoclonal antibodies and knockout edited cell lines for gold-standard validation. Please check that this product meets your needs before purchasing.

If you have any questions, special requirements or concerns, please send us an inquiry and/or contact our Support team ahead of purchase. Recommended alternatives for this product can be found below, along with publications, customer reviews and Q&As

### 性能

形式	Liquid
存放说明	Shipped at 4°C. Store at +4°C short term (1-2 weeks). Upon delivery aliquot. Store at -20°C or -80°C. Avoid freeze / thaw cycle.
存储溶液	pH: 7.40 Preservative: 0.02% Sodium azide Constituent: PBS
纯度	Immunogen affinity purified
克隆	多克隆
同种型	IgG

Batches of this product that have a concentration < 1mg/ml may have BSA added as a stabilising agent. If you would like information about the formulation of a specific lot, please contact our scientific support team who will be happy to help.

## 应用

**The Abpromise guarantee**      **Abpromise™** 承诺保证使用 ab85309 于以下的经测试应用

“应用说明”部分 下显示的仅为推荐的起始稀释度;实际最佳的稀释度/浓度应由使用者检定。

应用	Ab评论	说明
WB		Use a concentration of 1 µg/ml. Detects a band of approximately 33 kDa (predicted molecular weight: 33 kDa).
IHC-P	★★★★★ (3)	Use at an assay dependent concentration.

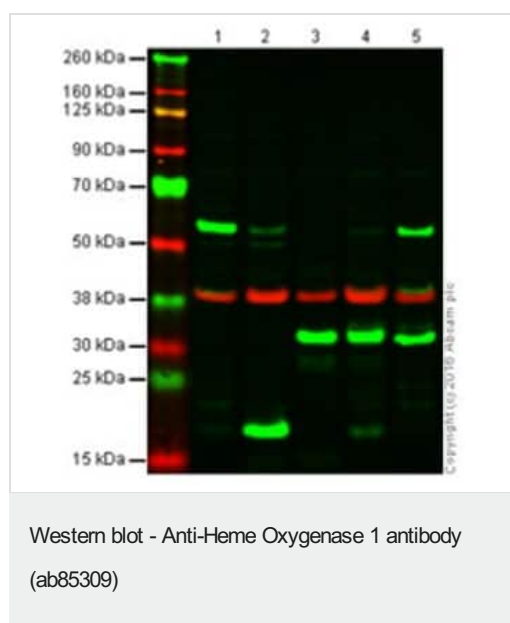
## 靶标

**功能**      Heme oxygenase cleaves the heme ring at the alpha methene bridge to form biliverdin. Biliverdin is subsequently converted to bilirubin by biliverdin reductase. Under physiological conditions, the activity of heme oxygenase is highest in the spleen, where senescent erythrocytes are sequestered and destroyed.

**序列相似性**      Belongs to the heme oxygenase family.

**细胞定位**      Microsome. Endoplasmic reticulum.

## 图片



**All lanes** : Anti-Heme Oxygenase 1 antibody (ab85309) at 1 µg/ml

**Lane 1** : HEK-293

**Lane 2** : HL60

**Lane 3** : Rt spleen

**Lane 4** : NR8383

**Lane 5** : Ms spleen

Lysates/proteins at 10 µg per lane.

### Secondary

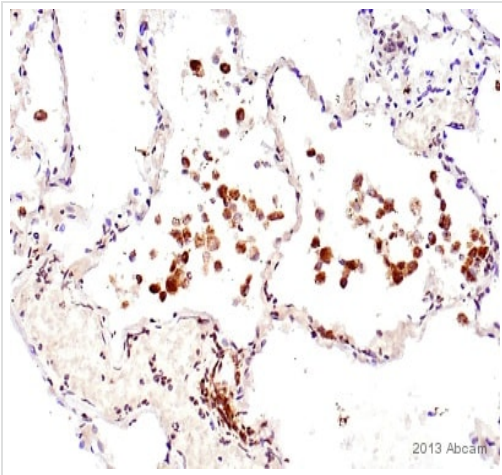
**All lanes** : IRDye® 800CW Goat anti Rabbit

**Predicted band size:** 33 kDa

**Observed band size:** 32 kDa

HeK293 & HL60 presumed negative or very low expression.

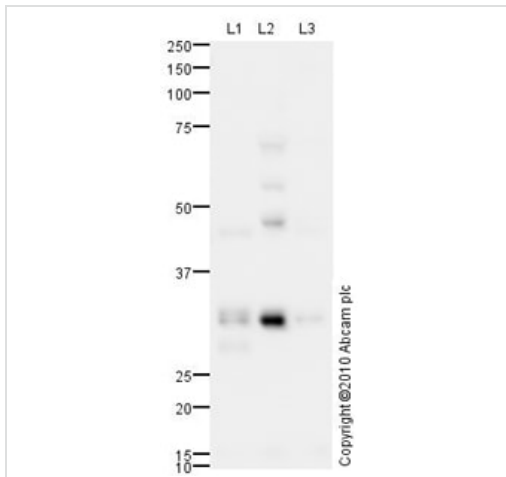
Loading control GAPDH at 38kDa



Immunohistochemistry (Formalin/PFA-fixed paraffin-embedded sections) - Anti-Heme Oxygenase 1 antibody (ab85309)

This image is courtesy of Carl Hobbs, King's College London, United Kingdom

Immunohistochemical detection of Anti-Heme Oxygenase 1 antibody (ab85309; 1/5000 for 2h @ 21°C) on human lung formalin/PFA-fixed paraffin-embedded sections. Antigen retrieval step: Heat mediated - Buffer/Enzyme Used: Citric acid. Blocking step: 1% BSA for 10 mins at 21°C. Secondary antibody biotin conjugated anti Rabbit IgG (1/200). NB: Positivity appears to be confined to macrophages- the primary antibody was omitted on the sequential section and was negative for macrophages ( to rule out lipofuscin).



Western blot - Anti-Heme Oxygenase 1 antibody (ab85309)

**All lanes** : Anti-Heme Oxygenase 1 antibody (ab85309) at 1 µg/ml

**Lane 1** : Spleen (Rat) Tissue Lysate

**Lane 2** : Heart (Rat) Tissue Lysate

**Lane 3** : Lung (Rat) Tissue Lysate

Lysates/proteins at 10 µg per lane.

**Secondary**

**All lanes** : Goat polyclonal to Rabbit IgG - H&L - Pre-Adsorbed (HRP) at 1/3000 dilution

Developed using the ECL technique.

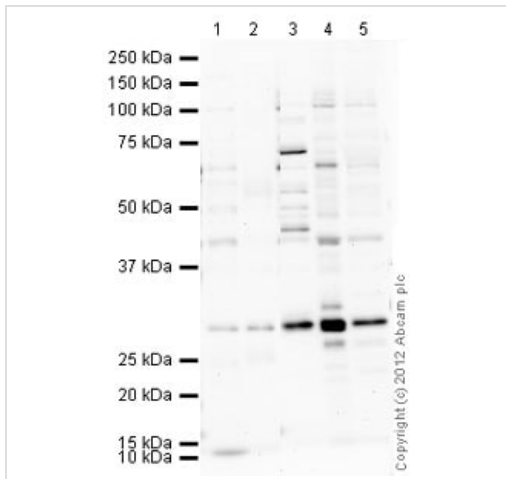
Performed under reducing conditions.

**Predicted band size:** 33 kDa

**Observed band size:** 33 kDa

**Additional bands at:** 47 kDa, 55 kDa, 70 kDa. We are unsure as to the identity of these extra bands.

**Exposure time:** 20 minutes



Western blot - Anti-Heme Oxygenase 1 antibody  
(ab85309)

**All lanes :** Anti-Heme Oxygenase 1 antibody (ab85309) at 1 µg/ml

**Lane 1 :** Human spleen tissue lysate - total protein ([ab29699](#))

**Lane 2 :** Human lung normal tissue lysate - total protein (40 - 65 years) ([ab30281](#))

**Lane 3 :** Heart (Mouse) Tissue Lysate

**Lane 4 :** Spleen (Mouse) Tissue Lysate

**Lane 5 :** Mouse lung normal tissue lysate - total protein ([ab29297](#))

Lysates/proteins at 10 µg per lane.

### Secondary

**All lanes :** Goat Anti-Rabbit IgG H&L (HRP) preadsorbed ([ab97080](#)) at 1/5000 dilution

Developed using the ECL technique.

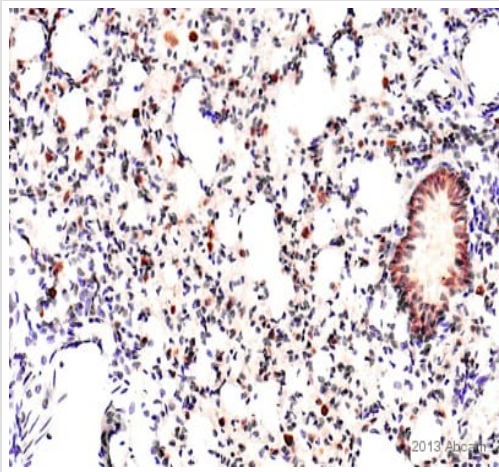
Performed under reducing conditions.

**Predicted band size:** 33 kDa

**Observed band size:** 30 kDa

**Additional bands at:** 44 kDa. We are unsure as to the identity of these extra bands.

**Exposure time:** 20 minutes



Immunohistochemical detection of Anti-Heme Oxygenase 1 antibody (ab85309; 1/5000 for 2h @ 21°C) on rat lung formalin/PFA-fixed paraffin-embedded sections. Antigen retrieval step: Heat mediated - Buffer/Enzyme Used: Citric acid. Blocking step: 1% BSA for 10 mins. Secondary antibody biotin conjugated anti Rabbit IgG (1/200). NB: As well as in macrophage cytoplasm, there is also clear positivity in the lining epithelium of the respiratory conducting tubes. I do not know if this is specific/non-specific.

Immunohistochemistry (Formalin/PFA-fixed paraffin-embedded sections) - Anti-Heme Oxygenase 1 antibody (ab85309)

This image is courtesy of Carl Hobbs, King's College London, United Kingdom

**Please note:** All products are "FOR RESEARCH USE ONLY. NOT FOR USE IN DIAGNOSTIC PROCEDURES"

### Our Abpromise to you: Quality guaranteed and expert technical support

---

- Replacement or refund for products not performing as stated on the datasheet
- Valid for 12 months from date of delivery
- Response to your inquiry within 24 hours
- We provide support in Chinese, English, French, German, Japanese and Spanish
- Extensive multi-media technical resources to help you
- We investigate all quality concerns to ensure our products perform to the highest standards

If the product does not perform as described on this datasheet, we will offer a refund or replacement. For full details of the Abpromise, please visit <https://www.abcam.cn/abpromise> or contact our technical team.

### Terms and conditions

---

- Guarantee only valid for products bought direct from Abcam or one of our authorized distributors