

Anti-Helicobacter pylori antibody ab7788

8 References **1 图像**

概述

产品名称	Anti-Helicobacter pylori抗体
描述	兔多克隆抗体to Helicobacter pylori
宿主	Rabbit
经测试应用	适用于: IHC-P
种属反应性	与反应: Helicobacter pylori
免疫原	Tissue, cells or virus corresponding to Helicobacter pylori. Purified helicobacter pylori.
常规说明	<p>This antibody stains the individual H. pylori bacterium when it presents on the surface of the epithelium or in the cytoplasm of the epithelial cells in biopsy tissue sections from the antrum and body of the stomach.</p> <p>This product is FOR RESEARCH USE ONLY. For commercial use, please contact partnerships@abcam.com.</p> <p>The Life Science industry has been in the grips of a reproducibility crisis for a number of years. Abcam is leading the way in addressing this with our range of recombinant monoclonal antibodies and knockout edited cell lines for gold-standard validation. Please check that this product meets your needs before purchasing.</p> <p>If you have any questions, special requirements or concerns, please send us an inquiry and/or contact our Support team ahead of purchase. Recommended alternatives for this product can be found below, along with publications, customer reviews and Q&As</p>

性能

形式	Liquid
存放说明	Shipped at 4°C. Upon delivery aliquot and store at -20°C. Avoid freeze / thaw cycles.
存储溶液	pH: 7.60 Preservative: 0.1% Sodium azide Constituents: PBS, 1% BSA
纯度	Immunogen affinity purified
Primary antibody说明	This antibody stains the individual H. pylori bacterium when it presents on the surface of the epithelium or in the cytoplasm of the epithelial cells in biopsy tissue sections from the antrum and body of the stomach.

克隆 多克隆
同种型 IgG

应用

The Abpromise guarantee **Abpromise™**承诺保证使用ab7788于以下的经测试应用

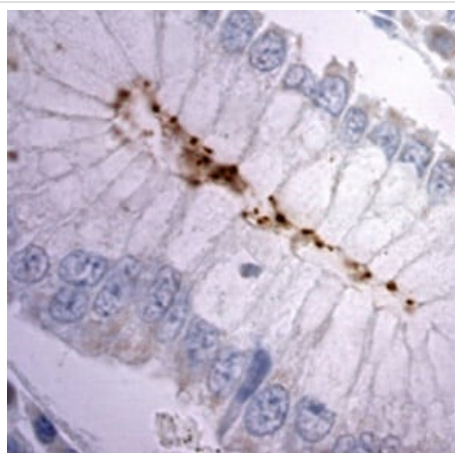
“应用说明”部分 下显示的仅为推荐的起始稀释度;实际最佳的稀释度/浓度应由使用者检定。

应用	Ab评论	说明
IHC-P		1/100. Perform enzymatic antigen retrieval before commencing with IHC staining protocol. Prolonged fixation in buffered formalin may destroy the epitope.

靶标

相关性 The spiral shaped bacterium *Helicobacter pylori* is strongly associated with inflammation of the stomach and is also implicated in the development of gastric malignancy. *H. pylori* is known to cause peptic ulcers and chronic gastritis in human. It is associated with duodenal ulcers and may be involved in development of adenocarcinoma and low-grade lymphoma of mucosa associated lymphoid tissue in the stomach. More recently this bacterium has also been implicated with a number of vascular disorders including heart disease. It is not clear how *H. pylori* is transmitted or why some patients become symptomatic while others do not. The bacteria are most likely spread from person to person through fecal-to-oral or oral-to-oral routes. Possible environmental reservoirs include contaminated water sources. Serological tests that measure specific *H. pylori* IgG antibodies can determine if a person has been infected although these methods do have drawbacks and limitations.

图片



ab7788 staining formalin-fixed/ paraffin-embedded human stomach tissue sections infected with *Helicobacter pylori*.

Immunohistochemistry (Formalin/PFA-fixed paraffin-embedded sections) - Anti-*Helicobacter pylori* antibody (ab7788)

Please note: All products are "FOR RESEARCH USE ONLY. NOT FOR USE IN DIAGNOSTIC PROCEDURES"

Our Abpromise to you: Quality guaranteed and expert technical support

- Replacement or refund for products not performing as stated on the datasheet
- Valid for 12 months from date of delivery
- Response to your inquiry within 24 hours

- We provide support in Chinese, English, French, German, Japanese and Spanish
- Extensive multi-media technical resources to help you
- We investigate all quality concerns to ensure our products perform to the highest standards

If the product does not perform as described on this datasheet, we will offer a refund or replacement. For full details of the Abpromise, please visit <https://www.abcam.cn/abpromise> or contact our technical team.

Terms and conditions

- Guarantee only valid for products bought direct from Abcam or one of our authorized distributors