


Anti-heavy chain cardiac Myosin antibody [BA-G5] ab50967

★★★★★ [12 Abreviews](#) [83 References](#) [2 图像](#)

概述

产品名称	Anti-heavy chain cardiac Myosin抗体[BA-G5]
描述	小鼠单克隆抗体[BA-G5] to heavy chain cardiac Myosin
宿主	Mouse
经测试应用	适用于: WB
种属反应性	与反应: Mouse, Rat 预测可用于: Rabbit, Cow, Human, Pig 
免疫原	Tissue, cells or virus. This information is proprietary to Abcam and/or its suppliers.
阳性对照	This antibody gave a positive signal in the following Tissue Lysates: Mouse Skeletal Muscle, Rat Heart, Rat Skeletal Muscle
常规说明	<p>This antibody clone is manufactured by Abcam. If you require a custom buffer formulation or conjugation for your experiments, please contact orders@abcam.com.</p> <p>The Life Science industry has been in the grips of a reproducibility crisis for a number of years. Abcam is leading the way in addressing this with our range of recombinant monoclonal antibodies and knockout edited cell lines for gold-standard validation. Please check that this product meets your needs before purchasing.</p> <p>If you have any questions, special requirements or concerns, please send us an inquiry and/or contact our Support team ahead of purchase. Recommended alternatives for this product can be found below, along with publications, customer reviews and Q&As</p>

性能

形式	Liquid
存放说明	Shipped at 4°C. Upon delivery aliquot and store at -20°C or -80°C. Avoid repeated freeze / thaw cycles.
存储溶液	<p>pH: 7.40</p> <p>Preservative: 0.02% Sodium azide</p> <p>Constituents: PBS, 6.97% L-Arginine</p>
纯度	Protein G purified
克隆	单克隆
克隆编号	BA-G5

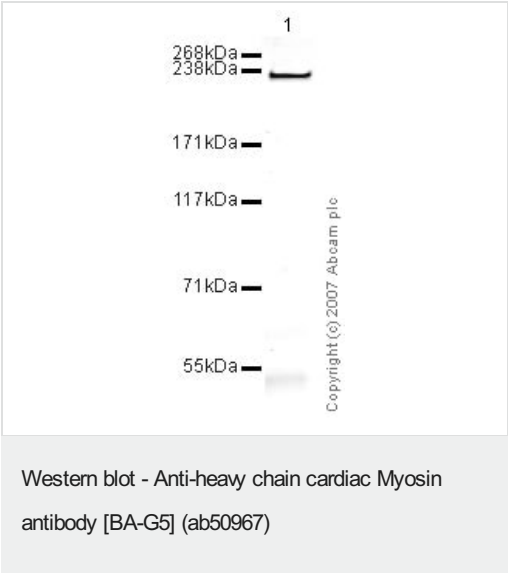
应用

The Abpromise guarantee **Abpromise™**承诺保证使用ab50967于以下的经测试应用

“应用说明”部分 下显示的仅为推荐的起始稀释度;实际最佳的稀释度/浓度应由使用者检定。

应用	Ab评论	说明
WB	★★★★★ (6)	Use a concentration of 1 - 5 µg/ml. Detects a band of approximately 223 kDa (predicted molecular weight: 223 kDa).

图片

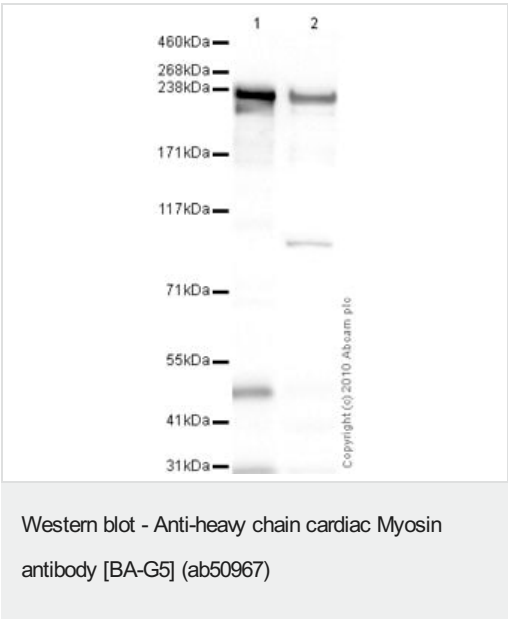


Anti-heavy chain cardiac Myosin antibody [BA-G5] (ab50967) at 5 µg/ml + Heart (Mouse) Tissue Lysate at 10 µg

Secondary
IRDye 680 Conjugated Goat Anti-Mouse IgG (H+L) at 1/10000 dilution

Performed under reducing conditions.

Predicted band size: 223 kDa
Observed band size: 223 kDa



All lanes : Anti-heavy chain cardiac Myosin antibody [BA-G5] (ab50967) at 1 µg/ml

Lane 1 : Heart (Rat) Tissue Lysate
Lane 2 : Skeletal Muscle (Rat) Tissue Lysate

Lysates/proteins at 10 µg per lane.

Secondary
All lanes : Goat polyclonal to Mouse IgG - H&L - Pre-Adsorbed (HRP) at 1/3000 dilution

Developed using the ECL technique.

Performed under reducing conditions.

Predicted band size: 223 kDa

Observed band size: 223 kDa

Additional bands at: 48 kDa, 95 kDa. We are unsure as to the identity of these extra bands.

Exposure time: 4 minutes

Please note: All products are "FOR RESEARCH USE ONLY. NOT FOR USE IN DIAGNOSTIC PROCEDURES"

Our Abpromise to you: Quality guaranteed and expert technical support

- Replacement or refund for products not performing as stated on the datasheet
- Valid for 12 months from date of delivery
- Response to your inquiry within 24 hours
- We provide support in Chinese, English, French, German, Japanese and Spanish
- Extensive multi-media technical resources to help you
- We investigate all quality concerns to ensure our products perform to the highest standards

If the product does not perform as described on this datasheet, we will offer a refund or replacement. For full details of the Abpromise, please visit <https://www.abcam.cn/abpromise> or contact our technical team.

Terms and conditions

- Guarantee only valid for products bought direct from Abcam or one of our authorized distributors