

Anti-hCG antibody ab54410

8 References [1 图像](#)

概述

产品名称	Anti-hCG抗体
描述	兔多克隆抗体to hCG
宿主	Rabbit
特异性	This antibody recognises both alpha and beta subunits of hCG.
经测试应用	适用于: WB
种属反应性	与反应: Human
免疫原	Purified Chorionic Gonadotropin from human placental glucoprotein urine.
阳性对照	Purified human CG and rat liver tissue lysate.
常规说明	<p>This product is manufactured by BioVision, an Abcam company and was previously called 5778 Chorionic Gonadotropin (CG) Antibody. 5778-100 is the same size as the 100 µg size of ab54410.</p> <p>The Life Science industry has been in the grips of a reproducibility crisis for a number of years. Abcam is leading the way in addressing this with our range of recombinant monoclonal antibodies and knockout edited cell lines for gold-standard validation. Please check that this product meets your needs before purchasing.</p> <p>If you have any questions, special requirements or concerns, please send us an inquiry and/or contact our Support team ahead of purchase. Recommended alternatives for this product can be found below, along with publications, customer reviews and Q&As</p>

性能

形式	Liquid
存放说明	Shipped at 4°C. Upon delivery aliquot and store at -20°C or -80°C. Avoid repeated freeze / thaw cycles.
存储溶液	<p>pH: 7.20</p> <p>Preservative: 0.01% Thimerosal (merthiolate)</p> <p>Constituents: 0.5% BSA, 30% Glycerol (glycerin, glycerine), PBS</p>
纯度	Protein A purified
克隆	多克隆
同种型	IgG

应用

The Abpromise guarantee Abpromise™承诺保证使用ab54410于以下的经测试应用

“应用说明”部分 下显示的仅为推荐的起始稀释度;实际最佳的稀释度/浓度应由使用者检定。

应用	Ab评论	说明
WB		Use a concentration of 0.5 - 4 µg/ml.

靶标

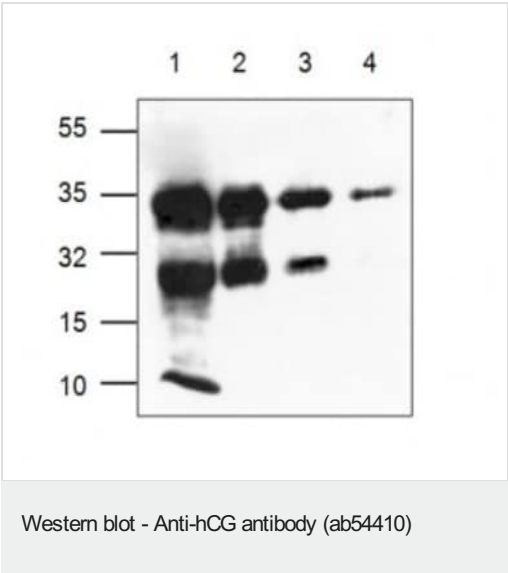
相关性

Human chorionic gonadotropin (hCG) is a glycoprotein hormone produced by trophoblastic cells of the placenta beginning 10 to 12 days after conception. Maintenance of the fetus in the first trimester of pregnancy requires the production of hCG, which binds to the corpus luteum of the ovary which is stimulated to produce progesterone which in turn maintains the secretory endometrium. hCG is present only in trace amounts in non pregnant urine and sera. It rises sharply during pregnancy. HCG is composed of two non identical, non covalently linked polypeptide chains designated as the a and b subunits. The a subunit of HCG is nearly identical to that of thyroid stimulating hormone (TSH), follicle stimulating hormone (FSH) and luteinizing hormone (LH). A germ cell tumor which is positive for cytokeratin, placental alkaline phosphatase (PLAP) and HCG but negative for EMA and AFP is probably a choriocarcinoma.

细胞定位

Secreted

图片



All lanes : Anti-hCG antibody (ab54410) (0.5-4 ug/m)

Lane 1 : Recombinant Human Chorionic Gonadotropin at 0.01 µg

Lane 2 : Recombinant Human Chorionic Gonadotropin at 0.05 µg

Lane 3 : Recombinant Human Chorionic Gonadotropin at 0.25 µg

Lane 4 : Recombinant Human Chorionic Gonadotropin at 1 µg

This information is only intended as a guide. The optimal dilutions must be determined by the user.

Please note: All products are "FOR RESEARCH USE ONLY. NOT FOR USE IN DIAGNOSTIC PROCEDURES"

Our Abpromise to you: Quality guaranteed and expert technical support

- Replacement or refund for products not performing as stated on the datasheet
- Valid for 12 months from date of delivery

- Response to your inquiry within 24 hours
- We provide support in Chinese, English, French, German, Japanese and Spanish
- Extensive multi-media technical resources to help you
- We investigate all quality concerns to ensure our products perform to the highest standards

If the product does not perform as described on this datasheet, we will offer a refund or replacement. For full details of the Abpromise, please visit <https://www.abcam.cn/abpromise> or contact our technical team.

Terms and conditions

- Guarantee only valid for products bought direct from Abcam or one of our authorized distributors