

Anti-HCE antibody [EPR19384] ab201046

重组 RabMAb

★★★★★ **5 Abreviews** 10 图像

概述

| | |
|-------|--|
| 产品名称 | Anti-HCE抗体[EPR19384] |
| 描述 | 兔单克隆抗体[EPR19384] to HCE |
| 宿主 | Rabbit |
| 经测试应用 | 适用于: IHC-P, WB, IP, ICC/IF |
| 种属反应性 | 与反应: Mouse, Rat, Human |
| 免疫原 | Recombinant fragment. This information is proprietary to Abcam and/or its suppliers. |
| 阳性对照 | WB: Human fetal liver and fetal kidney lysates; Ramos, HepG2, SH-SY5Y, HeLa, C6, RAW 264.7, PC-12 and NIH/3T3 whole cell lysates; Mouse brain, kidney and spleen lysates; Rat brain and kidney lysates. IHC-P: Mouse cerebral cortex and rat spleen tissues. ICC/IF: HeLa and NIH/3T3 cells. IP: SH-SY5Y whole cell lysate. |
| 常规说明 | <p>This product is a recombinant monoclonal antibody, which offers several advantages including:</p> <ul style="list-style-type: none">- High batch-to-batch consistency and reproducibility- Improved sensitivity and specificity- Long-term security of supply- Animal-free production <p>For more information see here.</p> <p>Our RabMAb[®] technology is a patented hybridoma-based technology for making rabbit monoclonal antibodies. For details on our patents, please refer to RabMAb[®] patents.</p> |

性能

| | |
|------|---|
| 形式 | Liquid |
| 存放说明 | Shipped at 4°C. Store at +4°C short term (1-2 weeks). Upon delivery aliquot. Store at -20°C long term. Avoid freeze / thaw cycle. |
| 存储溶液 | pH: 7.2 Preservative: 0.01% Sodium azide Constituents: 59% PBS, 40% Glycerol (glycerin, glycerine), 0.05% BSA |
| 纯度 | Protein A purified |
| 克隆 | 单克隆 |
| 克隆编号 | EPR19384 |

同种型

IgG

应用

The Abpromise guarantee

Abpromise™承诺保证使用ab201046于以下的经测试应用

“应用说明”部分 下显示的仅为推荐的起始稀释度;实际最佳的稀释度/浓度应由使用者检定。

| 应用 | Ab评论 | 说明 |
|--------|-----------|--|
| IHC-P | | 1/250. Perform heat mediated antigen retrieval with Tris/EDTA buffer pH 9.0 before commencing with IHC staining protocol. The IHC application is recommended for mouse and rat only. |
| WB | ★★★★★ (5) | 1/2000. Detects a band of approximately 69 kDa (predicted molecular weight: 69 kDa). |
| IP | | 1/50. |
| ICC/IF | | 1/500. |

靶标

功能

Bifunctional mRNA-capping enzyme exhibiting RNA 5'-triphosphatase activity in the N-terminal part and mRNA guanylyltransferase activity in the C-terminal part. Catalyzes the first two steps of cap formation: by removing the gamma-phosphate from the 5'-triphosphate end of nascent mRNA to yield a diphosphate end, and by transferring the gmp moiety of GTP to the 5'-diphosphate terminus.

组织特异性

Isoform 1 and isoform 4 (at a lesser extent) are expressed in cerebrum, cerebellum, thyroid, lung, heart, liver, kidney, spleen, large intestine, testis, skin and muscle.

序列相似性

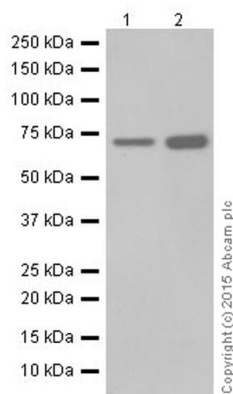
In the N-terminal section; belongs to the non-receptor class of the protein-tyrosine phosphatase family.

In the C-terminal section; belongs to the eukaryotic GTase family.

细胞定位

Nucleus.

图片



Western blot - Anti-HCE antibody [EPR19384]
(ab201046)

All lanes : Anti-HCE antibody [EPR19384] (ab201046) at 1/2000 dilution

Lane 1 : Human fetal liver lysate

Lane 2 : Human fetal kidney lysate

Lysates/proteins at 10 µg per lane.

Secondary

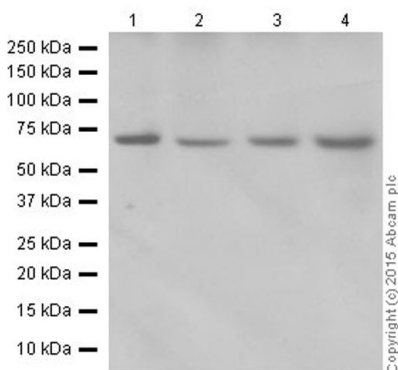
All lanes : Goat Anti-Rabbit IgG Peroxidase Conjugate, specific to the non-reduced form of IgG at 1/10000 dilution

Predicted band size: 69 kDa

Observed band size: 69 kDa

Exposure time: 3 minutes

Blocking/Dilution buffer: 5% NFDM/TBST.



Western blot - Anti-HCE antibody [EPR19384]
(ab201046)

All lanes : Anti-HCE antibody [EPR19384] (ab201046) at 1/2000 dilution

Lane 1 : Ramos (Human Burkitt's lymphoma cell line) whole cell lysate

Lane 2 : HepG2 (Human liver hepatocellular carcinoma cell line) whole cell lysate

Lane 3 : SH-SY5Y (Human neuroblastoma cell line from bone marrow) whole cell lysate

Lane 4 : HeLa (Human epithelial cell line from cervix adenocarcinoma) whole cell lysate

Lysates/proteins at 20 µg per lane.

Secondary

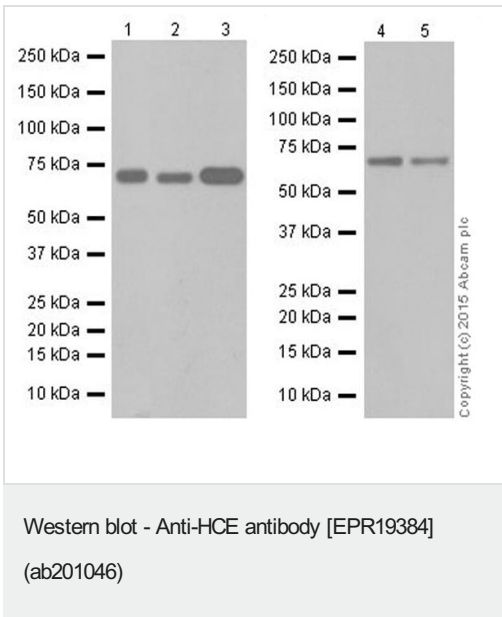
All lanes : Goat Anti-Rabbit IgG H&L (HRP) ([ab97051](#)) at 1/100000 dilution

Predicted band size: 69 kDa

Observed band size: 69 kDa

Exposure time: 1 minute

Blocking/Dilution buffer: 5% NFDm/TBST.



All lanes : Anti-HCE antibody [EPR19384] (ab201046) at 1/2000 dilution

Lane 1 : Mouse brain lysate

Lane 2 : Mouse kidney lysate

Lane 3 : Mouse spleen lysate

Lane 4 : Rat brain lysate

Lane 5 : Rat kidney lysate

Lysates/proteins at 10 µg per lane.

Secondary

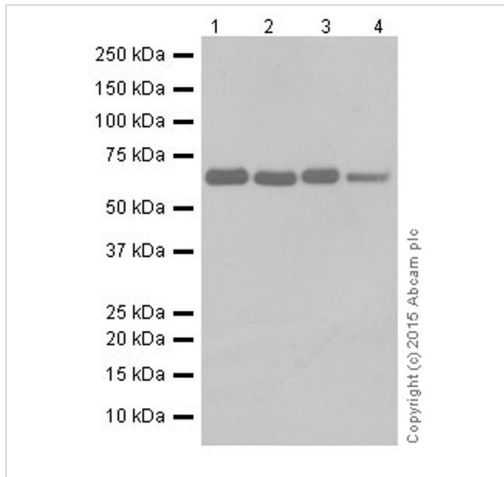
All lanes : Goat Anti-Rabbit IgG H&L (HRP) ([ab97051](#)) at 1/100000 dilution

Predicted band size: 69 kDa

Observed band size: 69 kDa

Exposure time: 3 minutes

Blocking/Dilution buffer: 5% NFDm/TBST.



Western blot - Anti-HCE antibody [EPR19384] (ab201046)

All lanes : Anti-HCE antibody [EPR19384] (ab201046) at 1/2000 dilution

Lane 1 : C6 (Rat glioma cell line) whole cell lysate

Lane 2 : RAW 264.7 (Mouse macrophage cell line transformed with Abelson murine leukemia virus) whole cell lysate

Lane 3 : PC-12 (Rat adrenal gland pheochromocytoma cell line) whole cell lysate

Lane 4 : NIH/3T3 (Mouse embryonic fibroblast cell line) whole cell lysate

Lysates/proteins at 10 µg per lane.

Secondary

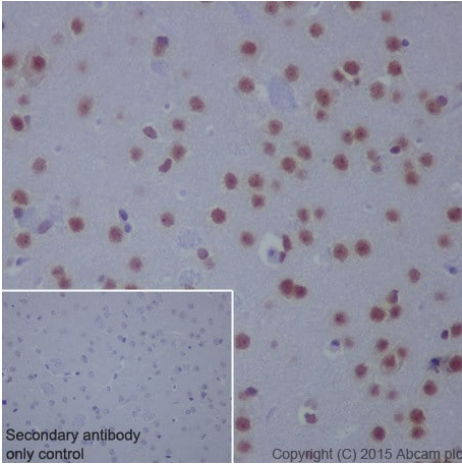
All lanes : Goat Anti-Rabbit IgG H&L (HRP) ([ab97051](#)) at 1/100000 dilution

Predicted band size: 69 kDa

Observed band size: 69 kDa

Exposure time: 30 seconds

Blocking/Dilution buffer: 5% NFDm/TBST.

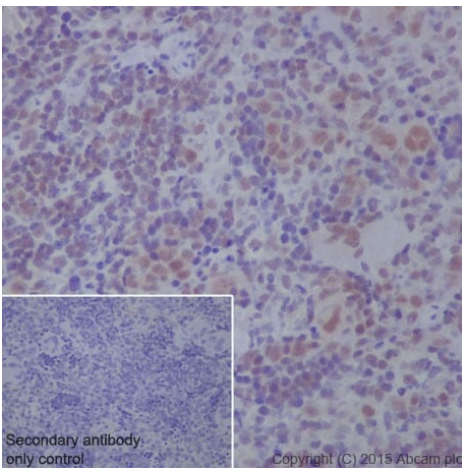


Immunohistochemistry (Formalin/PFA-fixed paraffin-embedded sections) - Anti-HCE antibody
[EPR19384] (ab201046)

Immunohistochemical analysis of paraffin-embedded Mouse cerebral cortex tissue labeling HCE with ab201046 at 1/250 dilution, followed by Goat Anti-Rabbit IgG H&L (HRP) (**ab97051**) at 1/500 dilution. Nucleus staining on neurons of mouse cerebral cortex is observed. Counter stained with Hematoxylin.

Secondary antibody only control: Used PBS instead of primary antibody, secondary antibody is Goat Anti-Rabbit IgG H&L (HRP) (**ab97051**) at 1/500 dilution.

Perform heat mediated antigen retrieval with Tris/EDTA buffer pH 9.0 before commencing with IHC staining protocol.

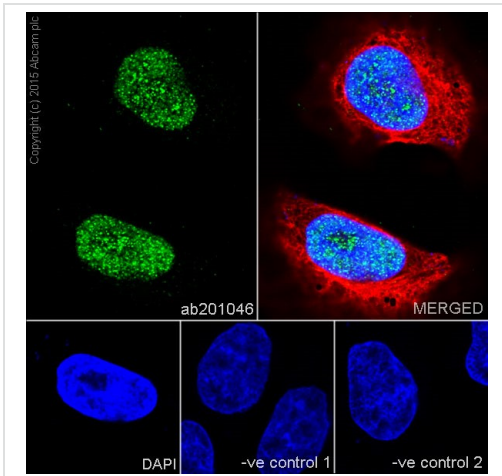


Immunohistochemistry (Formalin/PFA-fixed paraffin-embedded sections) - Anti-HCE antibody
[EPR19384] (ab201046)

Immunohistochemical analysis of paraffin-embedded Rat spleen tissue labeling HCE with ab201046 at 1/250 dilution, followed by Goat Anti-Rabbit IgG H&L (HRP) (**ab97051**) at 1/500 dilution. Nucleus staining on lymphocytes of rat spleen is observed. Counter stained with Hematoxylin.

Secondary antibody only control: Used PBS instead of primary antibody, secondary antibody is Goat Anti-Rabbit IgG H&L (HRP) (**ab97051**) at 1/500 dilution.

Perform heat mediated antigen retrieval with Tris/EDTA buffer pH 9.0 before commencing with IHC staining protocol.



Immunocytochemistry/ Immunofluorescence - Anti-HCE antibody [EPR19384] (ab201046)

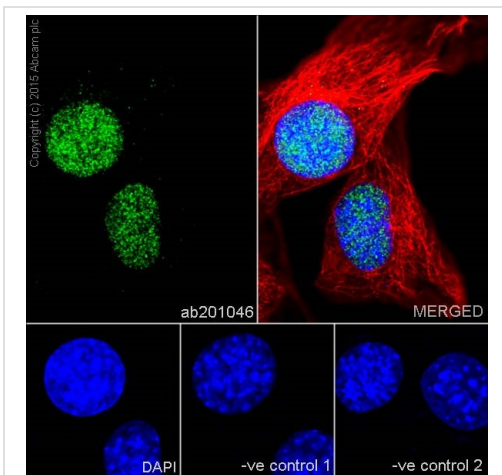
Immunofluorescent analysis of 4% paraformaldehyde-fixed, 0.1% Triton X-100 permeabilized HeLa (Human epithelial cell line from cervix adenocarcinoma) cells labeling HCE with ab201046 at 1/500 dilution, followed by Goat Anti-Rabbit IgG (Alexa Fluor® 488) (**ab150077**) secondary antibody at 1/1000 dilution (green). Confocal image showing nuclear staining on HeLa cell line. The nuclear counter stain is DAPI (blue).

Tubulin is detected with Anti-alpha Tubulin antibody [EPR19384] - Loading Control (**ab7291**) at 1/1000 dilution and Goat Anti-Mouse IgG H&L (Alexa Fluor® 594) preadsorbed (**ab150120**) at 1/1000 dilution (red).

The negative controls are as follows:

-ve control 1: ab201046 at 1/500 dilution followed by **ab150120** at 1/1000 dilution.

-ve control 2: **ab7291** at 1/1000 dilution followed by **ab150077** at 1/1000 dilution.



Immunocytochemistry/ Immunofluorescence - Anti-HCE antibody [EPR19384] (ab201046)

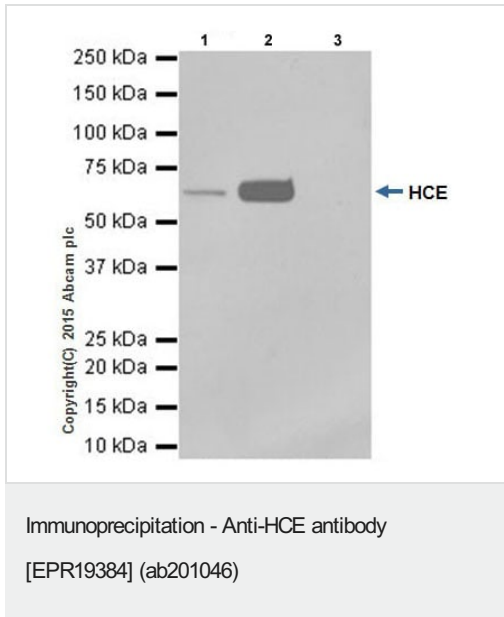
Immunofluorescent analysis of 4% paraformaldehyde-fixed, 0.1% Triton X-100 permeabilized NIH/3T3 (Mouse embryonic fibroblast cell line) cells labeling HCE with ab201046 at 1/500 dilution, followed by Goat Anti-Rabbit IgG (Alexa Fluor® 488) (**ab150077**) secondary antibody at 1/1000 dilution (green). Confocal image showing nuclear staining on NIH/3T3 cell line. The nuclear counter stain is DAPI (blue).

Tubulin is detected with Anti-alpha Tubulin antibody [EPR19384] - Loading Control (**ab7291**) at 1/1000 dilution and Goat Anti-Mouse IgG H&L (Alexa Fluor® 594) preadsorbed (**ab150120**) at 1/1000 dilution (red).

The negative controls are as follows:

-ve control 1: ab201046 at 1/500 dilution followed by **ab150120** at 1/1000 dilution.

-ve control 2: **ab7291** (anti-Tubulin mouse mAb) at 1/1000 dilution followed by **ab150077** at 1/1000 dilution.



HCE was immunoprecipitated from 1mg of SH-SY5Y (Human neuroblastoma cell line from bone marrow) whole cell lysate with ab201046 at 1/50 dilution. Western blot was performed from the immunoprecipitate using ab201046 at 1/1000 dilution. VeriBlot for IP Detection Reagent (HRP) ([ab131366](#)), was used for detection at 1/10000 dilution.

Lane 1: SH-SY5Y whole cell lysate 10µg (Input).


Lane 2: ab201046 IP in SH-SY5Y whole cell lysate.

Lane 3: Rabbit IgG, monoclonal [EPR19384] -Isotype Control ([ab172730](#)) instead of ab201046 in SH-SY5Y whole cell lysate.

Blocking and dilution buffer and concentration: 5% NFDm/TBST.

Exposure time: 30 seconds.

Why choose a recombinant antibody?

| | |
|--|--|
|  <p>Research with confidence Consistent and reproducible results</p> |  <p>Long-term and scalable supply Recombinant technology</p> |
|  <p>Success from the first experiment Confirmed specificity</p> |  <p>Ethical standards compliant Animal-free production</p> |

Anti-HCE antibody [EPR19384] (ab201046)

Please note: All products are "FOR RESEARCH USE ONLY. NOT FOR USE IN DIAGNOSTIC PROCEDURES"

Our Abpromise to you: Quality guaranteed and expert technical support

- Replacement or refund for products not performing as stated on the datasheet
- Valid for 12 months from date of delivery

- Response to your inquiry within 24 hours
- We provide support in Chinese, English, French, German, Japanese and Spanish
- Extensive multi-media technical resources to help you
- We investigate all quality concerns to ensure our products perform to the highest standards

If the product does not perform as described on this datasheet, we will offer a refund or replacement. For full details of the Abpromise, please visit <https://www.abcam.cn/abpromise> or contact our technical team.

Terms and conditions

- Guarantee only valid for products bought direct from Abcam or one of our authorized distributors