

### Anti-Haspin antibody ab21686

★★★★★ [1 Abreviews](#) [6 References](#) [1 图像](#)

#### 概述

产品名称	Anti-Haspin抗体
描述	兔多克隆抗体to Haspin
宿主	Rabbit
经测试应用	适用于: WB
种属反应性	与反应: Human
免疫原	Synthetic peptide conjugated to KLH derived from within residues 1 - 100 of Human Haspin. 参阅 Abcam的专有抗源政策(Peptide available as <a href="#">ab23532</a> .)
阳性对照	This antibody gave a positive signal in the following whole cell lysates: HeLa Expressing myc-Haspin (interphase); HeLa Expressing myc-Haspin (mitosis) Whole Cell Lysate.
常规说明	<p>The Life Science industry has been in the grips of a reproducibility crisis for a number of years. Abcam is leading the way in addressing this with our range of recombinant monoclonal antibodies and knockout edited cell lines for gold-standard validation. Please check that this product meets your needs before purchasing.</p> <p>If you have any questions, special requirements or concerns, please send us an inquiry and/or contact our Support team ahead of purchase. Recommended alternatives for this product can be found below, along with publications, customer reviews and Q&amp;As</p>

#### 性能

形式	Liquid
存放说明	Shipped at 4°C. Store at +4°C short term (1-2 weeks). Upon delivery aliquot. Store at -20°C or -80°C. Avoid freeze / thaw cycle.
存储溶液	pH: 7.40 Preservative: 0.02% Sodium azide Constituent: PBS
纯度	Batches of this product that have a concentration < 1mg/ml may have BSA added as a stabilising agent. If you would like information about the formulation of a specific lot, please contact our scientific support team who will be happy to help.
克隆	Immunogen affinity purified 多克隆

## 应用

**The Abpromise guarantee** **Abpromise™**承诺保证使用ab21686于以下的经测试应用

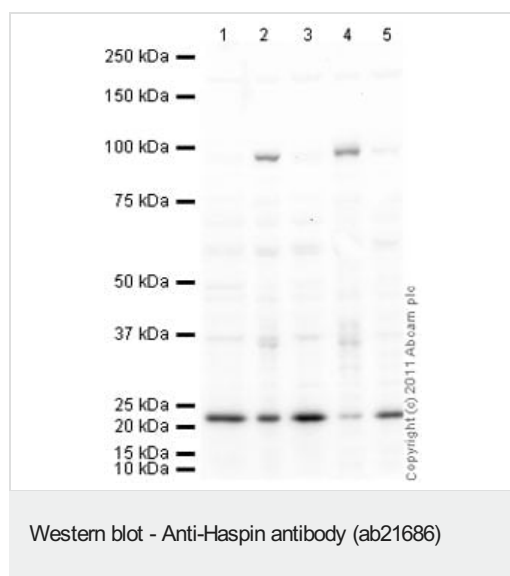
“应用说明”部分下显示的仅为推荐的起始稀释度;实际最佳的稀释度/浓度应由使用者检定。

应用	Ab评论	说明
WB	★★★★★ (1)	Use a concentration of 0.2 µg/ml. Detects a band of approximately 90 kDa (predicted molecular weight: 88 kDa).

## 靶标

<b>功能</b>	Required for normal alignment of chromosomes at metaphase. Phosphorylates histone H3 'Thr-3' during mitosis.
<b>组织特异性</b>	Strongly expressed in testis. Also present in thymus and bone marrow and low levels observed in prostate, intestine, lung, spleen and lymph node. Expressed in fetal skin, liver, kidney and small intestine and also in proliferating but not non-proliferating cell lines.
<b>序列相似性</b>	Belongs to the protein kinase superfamily. Ser/Thr protein kinase family. Haspin subfamily. Contains 1 protein kinase domain.
<b>翻译后修饰</b>	Autophosphorylated on both serine and threonine residues (By similarity). Phosphorylated during mitosis. Phosphorylated upon DNA damage, probably by ATM or ATR.
<b>细胞定位</b>	Nucleus.

## 图片



**All lanes** : Anti-Haspin antibody (ab21686) at 1 µg/ml

**Lane 1** : HeLa (Human epithelial carcinoma cell line) Whole Cell Lysate at 10 µg

**Lane 2** : HeLa Expressing myc-Haspin (interphase) Whole Cell Lysate - Positive Control at 5 µl

**Lane 3** : HeLa Interphase Whole Cell Lysate - Negative Control at 10 µg

**Lane 4** : HeLa Expressing myc-Haspin (mitosis) Whole Cell Lysate - Positive Control at 5 µl

**Lane 5** : HeLa Mitosis Whole Cell Lysate - Negative Control at 10 µg

**Secondary**

**All lanes** : Goat polyclonal Secondary Antibody to Rabbit IgG - H&L (HRP), pre-adsorbed at 1/5000 dilution

Performed under reducing conditions.

**Predicted band size:** 88 kDa

**Observed band size:** 90 kDa

**Additional bands at:** 23 kDa. We are unsure as to the identity of these extra bands.

**Exposure time:** 4 minutes

**Please note:** All products are "FOR RESEARCH USE ONLY. NOT FOR USE IN DIAGNOSTIC PROCEDURES"

### **Our Abpromise to you: Quality guaranteed and expert technical support**

---

- Replacement or refund for products not performing as stated on the datasheet
- Valid for 12 months from date of delivery
- Response to your inquiry within 24 hours
- We provide support in Chinese, English, French, German, Japanese and Spanish
- Extensive multi-media technical resources to help you
- We investigate all quality concerns to ensure our products perform to the highest standards

If the product does not perform as described on this datasheet, we will offer a refund or replacement. For full details of the Abpromise, please visit <https://www.abcam.cn/abpromise> or contact our technical team.

### **Terms and conditions**

---

- Guarantee only valid for products bought direct from Abcam or one of our authorized distributors