

### Anti-GUCY1A2 antibody ab42108

★★★★★ [1 Abreviews](#) [8 References](#) [2 图像](#)

#### 概述

产品名称	Anti-GUCY1A2抗体
描述	兔多克隆抗体to GUCY1A2
宿主	Rabbit
经测试应用	适用于: IHC-P, WB
种属反应性	与反应: Mouse, Rat
免疫原	Synthetic peptide corresponding to Human GUCY1A2 aa 692-708. Sequence: GICYFLEVR TGPKPPKP

 [Run BLAST with](#)

 [Run BLAST with](#)

#### 常规说明

The Life Science industry has been in the grips of a reproducibility crisis for a number of years. Abcam is leading the way in addressing this with our range of recombinant monoclonal antibodies and knockout edited cell lines for gold-standard validation. Please check that this product meets your needs before purchasing.

If you have any questions, special requirements or concerns, please send us an inquiry and/or contact our Support team ahead of purchase. Recommended alternatives for this product can be found below, along with publications, customer reviews and Q&As

#### 性能

形式	Liquid
存放说明	Shipped at 4°C. Upon delivery aliquot and store at -20°C or -80°C. Avoid repeated freeze / thaw cycles.
存储溶液	Antibody stabilization buffer, with preservatives, consisting of Hepes, NaCl, KCl, glycerol, BSA and chaotropic agents.
纯度	Immunogen affinity purified
克隆	多克隆
同种型	IgG

#### 应用

The Abpromise guarantee

Abpromise™承诺保证使用ab42108于以下的经测试应用

“应用说明”部分 下显示的仅为推荐的起始稀释度;实际最佳的稀释度/浓度应由使用者检定。

应用	Ab评论	说明
IHC-P		1/50 - 1/150.
WB		1/750. Detects a band of approximately 98 kDa (predicted molecular weight: 98 kDa).

靶标	
功能	Has guanylyl cyclase on binding to the beta-1 subunit. Isoform 2 acts as a negative regulator of guanylyl cyclase activity as it forms non-functional heterodimers with the beta subunits.
组织特异性	Isoform 1 is expressed in fetal brain, liver, colon, endothelium and testis. Isoform 2 is expressed only in liver, colon and endothelium.
序列相似性	Belongs to the adenylyl cyclase class-4/guanylyl cyclase family. Contains 1 guanylate cyclase domain.
细胞定位	Cytoplasm.

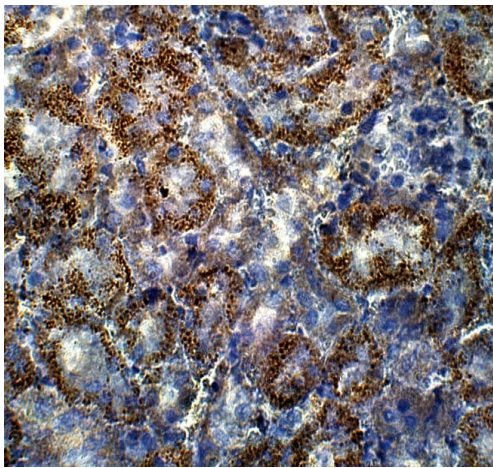
图片



Anti-GUCY1A2 antibody (ab42108) at 1/750 dilution + Soluble Guanylyl Cyclase alpha 2 Antibody Positive Control (Affinity Purified Recombinant full length protein)

Predicted band size: 98 kDa  
Observed band size: 98 kDa

Western blot - Anti-GUCY1A2 antibody (ab42108)



Immunohistochemistry (Formalin/PFA-fixed paraffin-embedded sections) - Anti-GUCY1A2 antibody (ab42108)

Immunohistochemistry (Formalin/PFA-fixed paraffin-embedded sections) analysis of mouse large intestine staining GUCY1A2 with ab42108 at a 1/100 dilution in IHC blocking buffer. DAB (brown) staining and Hematoxylin QS (blue) counterstain. 40X magnification.

**Please note:** All products are "FOR RESEARCH USE ONLY. NOT FOR USE IN DIAGNOSTIC PROCEDURES"

### Our Abpromise to you: Quality guaranteed and expert technical support

---

- Replacement or refund for products not performing as stated on the datasheet
- Valid for 12 months from date of delivery
- Response to your inquiry within 24 hours
- We provide support in Chinese, English, French, German, Japanese and Spanish
- Extensive multi-media technical resources to help you
- We investigate all quality concerns to ensure our products perform to the highest standards

If the product does not perform as described on this datasheet, we will offer a refund or replacement. For full details of the Abpromise, please visit <https://www.abcam.cn/abpromise> or contact our technical team.

### Terms and conditions

---

- Guarantee only valid for products bought direct from Abcam or one of our authorized distributors