

Anti-Guanylyl Cyclase alpha 1/GUCY1A3 antibody ab85445

3 图像

概述	
产品名称	Anti-Guanylyl Cyclase alpha 1/GUCY1A3抗体
描述	兔多克隆抗体to Guanylyl Cyclase alpha 1/GUCY1A3
宿主	Rabbit
特异性	From Jan 2024, QC testing of replenishment batches of this polyclonal changed. All tested and expected application and reactive species combinations are still covered by our Abcam product promise. However, we no longer test all applications. For more information on a specific batch, please contact our Scientific Support who will be happy to help.
经测试应用	适用于: ICC/IF, IHC-P, WB
种属反应性	与反应: Mouse, Rat, Human
免疫原	Synthetic peptide. This information is proprietary to Abcam and/or its suppliers.
阳性对照	This antibody gave a positive signal in the following tissue lysates: Rat kidney; Rat lung; Mouse lung; Rat heart. This antibody gave a positive result when used in the following formaldehyde fixed cell lines: HeLa.
常规说明	<p>The Life Science industry has been in the grips of a reproducibility crisis for a number of years. Abcam is leading the way in addressing this with our range of recombinant monoclonal antibodies and knockout edited cell lines for gold-standard validation. Please check that this product meets your needs before purchasing.</p> <p>If you have any questions, special requirements or concerns, please send us an inquiry and/or contact our Support team ahead of purchase. Recommended alternatives for this product can be found below, along with publications, customer reviews and Q&amp;As</p>
性能	
形式	Liquid
存放说明	Shipped at 4°C. Store at +4°C short term (1-2 weeks). Upon delivery aliquot. Store at -20°C or -80°C. Avoid freeze / thaw cycle.
存储溶液	<p>pH: 7.40</p> <p>Preservative: 0.02% Sodium azide</p> <p>Constituent: PBS</p> <p>Batches of this product that have a concentration &lt; 1mg/ml may have BSA added as a stabilising agent. If you would like information about the formulation of a specific lot, please contact our</p>

scientific support team who will be happy to help.

纯度

Immunogen affinity purified

克隆

多克隆

同种型

IgG

## 应用

### The Abpromise guarantee

**Abpromise™** 承诺保证使用 ab85445 于以下的经测试应用

“应用说明”部分 下显示的仅为推荐的起始稀释度;实际最佳的稀释度/浓度应由使用者检定。

应用	Ab 评论	说明
ICC/IF		Use a concentration of 5 µg/ml.
IHC-P		Use a concentration of 5 µg/ml.
WB		Use a concentration of 1 µg/ml. Detects a band of approximately 77 kDa (predicted molecular weight: 77 kDa).

## 靶标

### 序列相似性

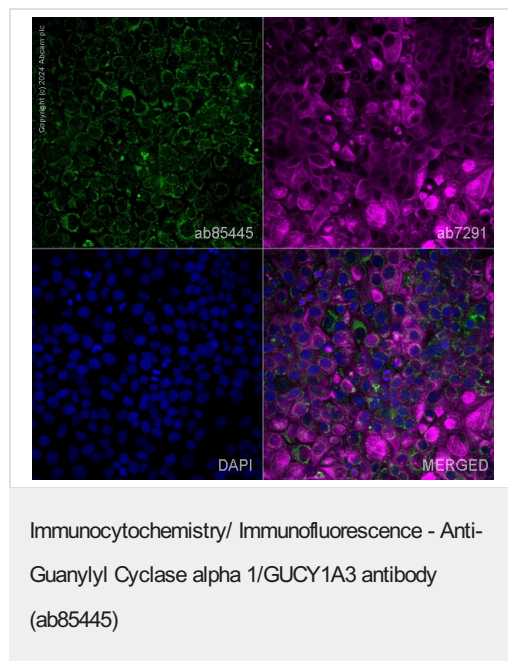
Belongs to the adenylyl cyclase class-4/guanylyl cyclase family.

Contains 1 guanylate cyclase domain.

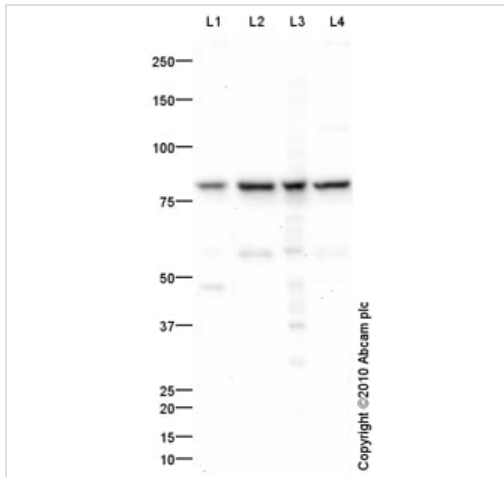
### 细胞定位

Cytoplasm.

## 图片



ab85445 staining Guanylyl Cyclase alpha 1/GUCY1A3 in MCF7 cells. The cells were fixed with 4% paraformaldehyde (10 min), permeabilized with 0.1% PBS-Triton X-100 for 5 minutes and then blocked with 1% BSA/10% normal goat serum/0.3M glycine in 0.1% PBS-Tween for 1h. The cells were then incubated overnight at 4°C with ab85445 at 1 µg/ml and **ab7291**, Mouse monoclonal [DM1A] to alpha Tubulin - Loading Control. Cells were then incubated with **ab150081**, Goat polyclonal Secondary Antibody to Rabbit IgG - H&L (Alexa Fluor® 488), pre-adsorbed at 1/1000 dilution (shown in green) and **ab150120**, Goat polyclonal Secondary Antibody to Mouse IgG - H&L (Alexa Fluor® 594), pre-adsorbed at 1/1000 dilution (shown in pseudocolour magenta). Nuclear DNA was labelled with DAPI (shown in blue). Image was acquired with a high-content analyser (Operetta CLS, Perkin Elmer) and a maximum intensity projection of confocal sections is shown.



Western blot - Anti-Guanylyl Cyclase alpha 1/GUCY1A3 antibody (ab85445)

**All lanes :** Anti-Guanylyl Cyclase alpha 1/GUCY1A3 antibody (ab85445) at 1 µg/ml

**Lane 1 :** Kidney (Rat) Tissue Lysate

**Lane 2 :** Lung (Rat) Tissue Lysate

**Lane 3 :** Mouse lung normal tissue lysate - total protein ([ab29297](#))

**Lane 4 :** Heart (Rat) Tissue Lysate

Lysates/proteins at 10 µg per lane.

### Secondary

**All lanes :** Goat polyclonal to Rabbit IgG - H&L - Pre-Adsorbed (HRP) at 1/3000 dilution

Developed using the ECL technique.

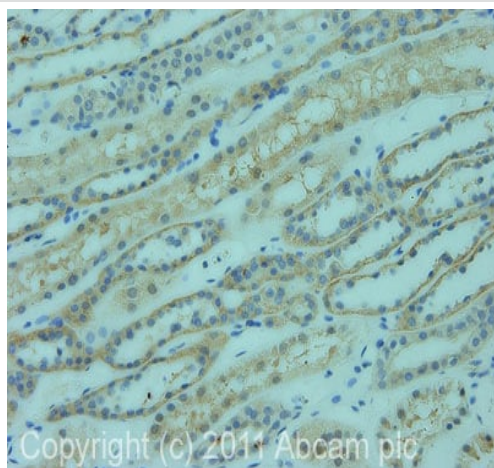
Performed under reducing conditions.

**Predicted band size:** 77 kDa

**Observed band size:** 77 kDa

**Additional bands at:** 48 kDa, 58 kDa. We are unsure as to the identity of these extra bands.

**Exposure time:** 3 minutes



Immunohistochemistry (Formalin/PFA-fixed paraffin-embedded sections) - Anti-Guanylyl Cyclase alpha 1/GUCY1A3 antibody (ab85445)

IHC image of Guanylyl Cyclase alpha 1/GUCY1A3 staining in human Normal Kidney FFPE section, performed on a Bond<sup>TM</sup> system using the standard protocol F. The section was pre-treated using heat mediated antigen retrieval with sodium citrate buffer (pH6, epitope retrieval solution 1) for 20 mins. The section was then incubated with ab85445, 5µg/ml, for 15 mins at room temperature and detected using an HRP conjugated compact polymer system. DAB was used as the chromogen. The section was then counterstained with haematoxylin and mounted with DPX

### **Our Abpromise to you: Quality guaranteed and expert technical support**

---

- Replacement or refund for products not performing as stated on the datasheet
- Valid for 12 months from date of delivery
- Response to your inquiry within 24 hours
  
- We provide support in Chinese, English, French, German, Japanese and Spanish
- Extensive multi-media technical resources to help you
- We investigate all quality concerns to ensure our products perform to the highest standards

If the product does not perform as described on this datasheet, we will offer a refund or replacement. For full details of the Abpromise, please visit <https://www.abcam.cn/abpromise> or contact our technical team.

### **Terms and conditions**

---

- Guarantee only valid for products bought direct from Abcam or one of our authorized distributors