



# Anti-GSTM2 antibody ab175282

**1** [References](#) **3** [图像](#)

### 概述

<b>产品名称</b>	Anti-GSTM2抗体
<b>描述</b>	兔多克隆抗体to GSTM2
<b>宿主</b>	Rabbit
<b>经测试应用</b>	<b>适用于:</b> ICC/IF, WB, IHC-P
<b>种属反应性</b>	<b>与反应:</b> Human
<b>免疫原</b>	Recombinant full length protein corresponding to Human GSTM2 aa 1-218. Sequence:  MPMTLGYWNIRGLAHSIRLLLEYTDSSYEKKYTMGDAPDYD RSQWLNEK FKLGLDFPNLPYLIDGTHKITQSNAILRYIARKHNLCGESEK EQIREDIL ENQFMDSRMQLAKLCYDPDFEKLKPEYLQALPEMLKLYSQFL GKQPWFLG DKITFVDFIAYDVLERNQVFEPSCLDAFPNLKDFISRFEGLE KISAYMKS SRFLRPVFTKMAVWGNK  Database link: <a href="#">P28161</a>  <a href="#">Run BLAST with</a>  <a href="#">Run BLAST with</a>
<b>阳性对照</b>	HeLa whole cell lysate ( <a href="#">ab150035</a> ).
<b>常规说明</b>	The Life Science industry has been in the grips of a reproducibility crisis for a number of years. Abcam is leading the way in addressing this with our range of recombinant monoclonal antibodies and knockout edited cell lines for gold-standard validation. Please check that this product meets your needs before purchasing.  If you have any questions, special requirements or concerns, please send us an inquiry and/or contact our Support team ahead of purchase. Recommended alternatives for this product can be found below, along with publications, customer reviews and Q&As
<b>性能</b>	
<b>形式</b>	Liquid
<b>存放说明</b>	Shipped at 4°C. Store at +4°C short term (1-2 weeks). Upon delivery aliquot. Store at -20°C long term. Avoid freeze / thaw cycle.

<b>存储溶液</b>	pH: 7.30 Preservative: 0.02% Sodium azide Constituents: 49% PBS, 50% Glycerol
<b>纯度</b>	Protein A purified
<b>克隆</b>	多克隆
<b>同种型</b>	IgG

## 应用

**The Abpromise guarantee**      **Abpromise™** 承诺保证使用 ab175282 于以下的经测试应用

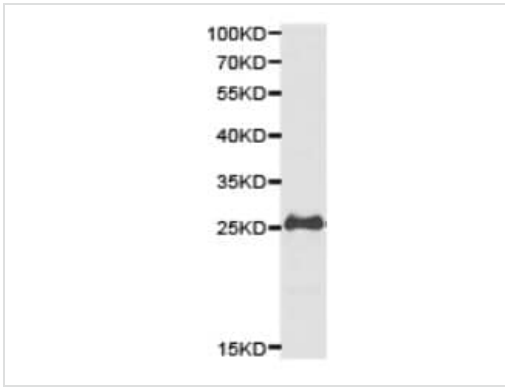
“应用说明”部分 下显示的仅为推荐的起始稀释度;实际最佳的稀释度/浓度应由使用者检定。

应用	Ab评论	说明
<b>ICC/IF</b>		Use at an assay dependent concentration.
<b>WB</b>		1/500 - 1/2000. Predicted molecular weight: 26 kDa.
<b>IHC-P</b>		1/50 - 1/200. <b>ab171870</b> - Rabbit polyclonal IgG, is suitable for use as an isotype control with this antibody.

## 靶标

<b>功能</b>	Conjugation of reduced glutathione to a wide number of exogenous and endogenous hydrophobic electrophiles.
<b>组织特异性</b>	Muscle.
<b>序列相似性</b>	Belongs to the GST superfamily. Mu family. Contains 1 GST C-terminal domain. Contains 1 GST N-terminal domain.
<b>细胞定位</b>	Cytoplasm.

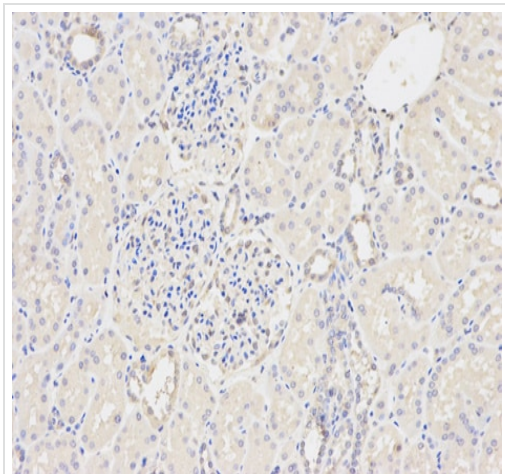
## 图片



Western blot - Anti-GSTM2 antibody (ab175282)

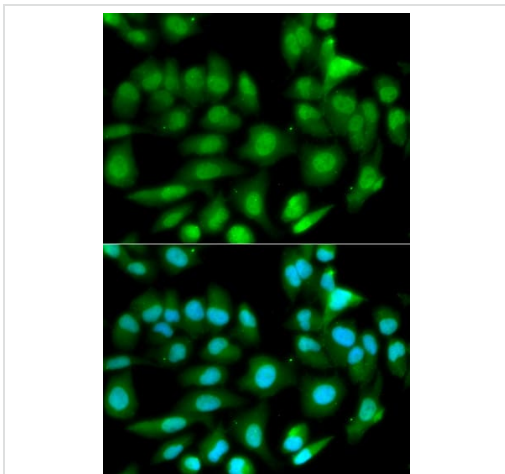
Anti-GSTM2 antibody (ab175282) at 1/500 dilution + HeLa cell lysate

**Predicted band size:** 26 kDa



Immunohistochemistry (Formalin/PFA-fixed paraffin-embedded sections) - Anti-GSTM2 antibody (ab175282)

Immunohistochemistry (Formalin/PFA-fixed paraffin-embedded sections) analysis of human kidney tissue labelling GSTM2 with ab175282 at 1/200. Magnification: 200x.



Immunocytochemistry/ Immunofluorescence - Anti-GSTM2 antibody (ab175282)

Immunocytochemistry/Immunofluorescence analysis of HeLa cells using ab175282. Blue DAPI for nuclear staining.

**Please note:** All products are "FOR RESEARCH USE ONLY. NOT FOR USE IN DIAGNOSTIC PROCEDURES"

## **Our Abpromise to you: Quality guaranteed and expert technical support**

---

- Replacement or refund for products not performing as stated on the datasheet
- Valid for 12 months from date of delivery
- Response to your inquiry within 24 hours
  
- We provide support in Chinese, English, French, German, Japanese and Spanish
- Extensive multi-media technical resources to help you
- We investigate all quality concerns to ensure our products perform to the highest standards

If the product does not perform as described on this datasheet, we will offer a refund or replacement. For full details of the Abpromise, please visit <https://www.abcam.cn/abpromise> or contact our technical team.

## **Terms and conditions**

---

- Guarantee only valid for products bought direct from Abcam or one of our authorized distributors