

# Anti-GSTK1 antibody [EPR1939] ab134173

敲除验证 重组 RabMAb

[1 References](#) [7 图像](#)

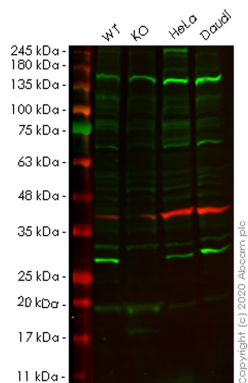
### 概述

产品名称	Anti-GSTK1抗体[EPR1939]
描述	兔单克隆抗体[EPR1939] to GSTK1
宿主	Rabbit
经测试应用	适用于: Flow Cyt (Intra), IHC-P, WB, IP, ICC/IF
种属反应性	与反应: Human
免疫原	Synthetic peptide within Human GSTK1 aa 1-100. The exact sequence is proprietary.
阳性对照	WB: Daudi, HeLa and HEK-293 cell lysates IHC-P Human kidney tissue ICC/IF: HEK-293 cells Flow Cyt (intra): HeLa Cells IP: HeLa cells
常规说明	<p>This product is a recombinant monoclonal antibody, which offers several advantages including:</p> <ul style="list-style-type: none"><li>- High batch-to-batch consistency and reproducibility</li><li>- Improved sensitivity and specificity</li><li>- Long-term security of supply</li><li>- Animal-free production</li></ul> <p>For more information <a href="#">see here</a>.</p> <p>Our RabMAb<sup>®</sup> technology is a patented hybridoma-based technology for making rabbit monoclonal antibodies. For details on our patents, please refer to <a href="#">RabMAb<sup>®</sup> patents</a>.</p> <p>Mouse, Rat: We have preliminary internal testing data to indicate this antibody may not react with these species. Please contact us for more information.</p>

### 性能

形式	Liquid
存放说明	Shipped at 4°C. Store at +4°C short term (1-2 weeks). Upon delivery aliquot. Store at -20°C long term. Avoid freeze / thaw cycle.
存储溶液	pH: 7.2 Preservative: 0.05% Sodium azide Constituents: 0.05% BSA, 40% Glycerol (glycerin, glycerine), 59% PBS
纯度	Protein A purified
克隆	单克隆





Western blot - Anti-GSTK1 antibody [EPR1939] (ab134173)

**All lanes** : Anti-GSTK1 antibody [EPR1939] (ab134173) at 1/1000 dilution

**Lane 1** : Wild-type HEK293T cell lysate

**Lane 2** : GSTK1 knockout HEK293T cell lysate

**Lane 3** : HeLa cell lysate

**Lane 4** : Daudi cell lysate

Lysates/proteins at 20 µg per lane.

#### Secondary

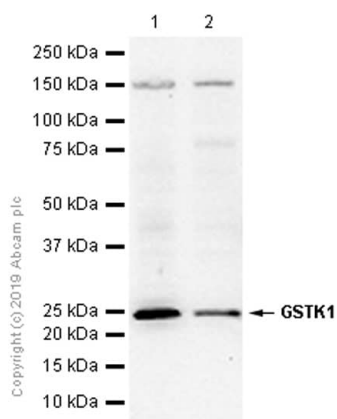
**All lanes** : Goat anti-Rabbit IgG H&L (IRDye® 800CW) preadsorbed (**ab216773**) at 1/10000 dilution

**Predicted band size:** 25 kDa

**Observed band size:** 27 kDa

**Lanes 1-4:** Merged signal (red and green). Green - ab134173 observed at 27 kDa. Red - loading control **ab8245** observed at 36 kDa.

ab134173 Anti-GSTK1 antibody [EPR1939] was shown to specifically react with GSTK1 in wild-type HEK293T cells. Loss of signal was observed when knockout cell line **ab266112** (knockout cell lysate **ab257461**) was used. Wild-type and GSTK1 knockout samples were subjected to SDS-PAGE. ab134173 and Anti-GAPDH antibody [6C5] - Loading Control (**ab8245**) were incubated at room temperature for 2.5 hours at 1 in 1000 dilution and 1 in 20000 dilution respectively. Blots were developed with Goat anti-Rabbit IgG H&L (IRDye® 800CW) preadsorbed (**ab216773**) and Goat anti-Mouse IgG H&L (IRDye® 680RD) preadsorbed (**ab216776**) secondary antibodies at 1 in 20000 dilution for 1 hour at room temperature before imaging.



Western blot - Anti-GSTK1 antibody [EPR1939] (ab134173)

**All lanes** : Anti-GSTK1 antibody [EPR1939] (ab134173) at 1/1000 dilution (Purified)

**Lane 1** : HEK-293 (Human embryonic kidney epithelial cell) whole cell lysates

**Lane 2** : HeLa (Human cervix adenocarcinoma epithelial cell) whole cell lysates

Lysates/proteins at 20 µg per lane.

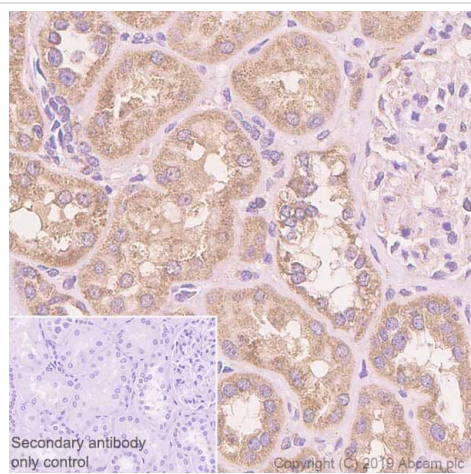
### Secondary

**All lanes** : Goat Anti-Rabbit IgG H&L (HRP) (**ab97051**) at 1/20000 dilution

**Predicted band size:** 25 kDa

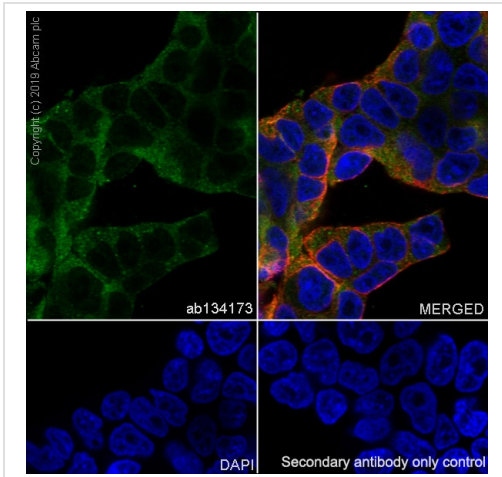
**Observed band size:** 25 kDa

Blocking/Diluting buffer: 5% NFD/MTBST



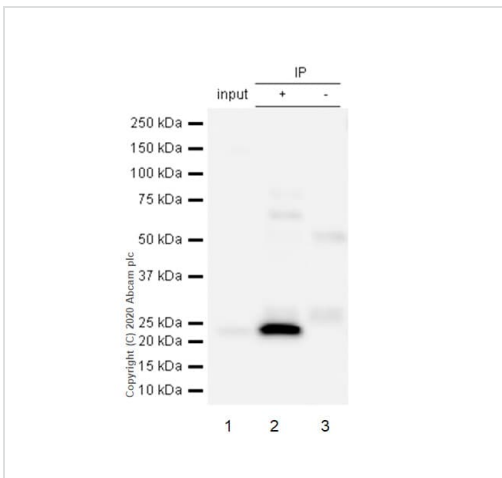
Immunohistochemistry (Formalin/PFA-fixed paraffin-embedded sections) - Anti-GSTK1 antibody [EPR1939] (ab134173)

Immunohistochemistry (Formalin/PFA-fixed paraffin-embedded sections) analysis of human kidney tissue sections labeling GSTK1 with purified ab134173 at 1/300 dilution (0.99 µg/mL). Heat mediated antigen retrieval using Bond™ Epitope Retrieval Solution 2 (pH 9.0). Rabbit specific IHC polymer detection kit HRP/DAB (**ab209101**) was used as the secondary antibody. Negative control: PBS instead of the primary antibody. Hematoxylin was used as a counterstain.



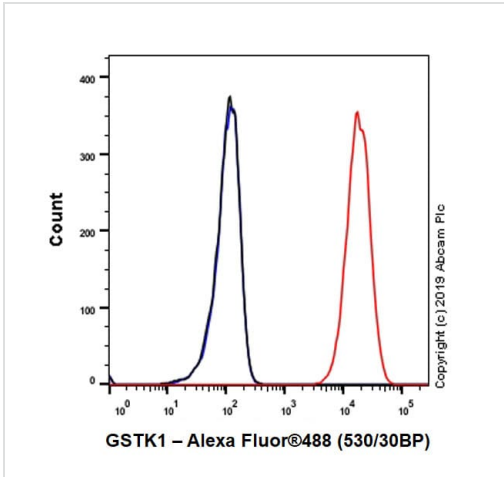
Immunocytochemistry/ Immunofluorescence - Anti-GSTK1 antibody [EPR1939] (ab134173)

Immunocytochemistry/ Immunofluorescence analysis of 293T (Human embryonic kidney epithelial cell) cells labeling GSTK1 with Purified ab134173 at 1/50 dilution (5.92 µg/mL). Cells were fixed in 4% Paraformaldehyde and permeabilized with 0.1% tritonX-100. Cells were counterstained with **ab195889** Anti-alpha Tubulin antibody [DM1A] - Microtubule Marker (Alexa Fluor® 594) 1/200 (2.5 µg/mL). Goat anti rabbit IgG (Alexa Fluor® 488, **ab150077**) was used as the secondary antibody at 1/1000 (2 µg/mL) dilution. DAPI (blue) was used as nuclear counterstain. PBS instead of the primary antibody was used as the secondary antibody only control.



Immunoprecipitation - Anti-GSTK1 antibody [EPR1939] (ab134173)




Purified ab134173 at 1/30 dilution (2ug) immunoprecipitating GSTK1 in HeLa whole cell lysate.  
 Lane 1 (input): HeLa (Human cervix adenocarcinoma epithelial cell) whole cell lysate (10µg)  
 Lane 2 (+): ab134173 + HeLa whole cell lysate.  
 Lane 3 (-): Rabbit monoclonal IgG (**ab172730**) instead of ab134173 in HeLa whole cell lysate.  
 VeriBlot for IP Detection Reagent (HRP) (**ab131366**) (1/1000) was used for Western blotting.  
 Blocking Buffer and concentration: 5% NFDm/TBST.  
 Diluting buffer and concentration: 5% NFDm/TBST.  
 Observed band size: 25 kDa



Flow Cytometry (Intracellular) - Anti-GSTK1 antibody [EPR1939] (ab134173)

Intracellular Flow Cytometry analysis of HeLa (Human cervix adenocarcinoma epithelial cell) cells labeling GSTK1 with Purified ab134173 at 1/30 dilution (10 µg/mL) (Red). Cells were fixed with 4% Paraformaldehyde and permeabilised with 90% Methanol. A Goat anti rabbit IgG (Alexa Fluor® 488, [ab150077](#)) secondary antibody was used at 1/2000. Isotype control - Rabbit monoclonal IgG (Black). Unlabeled control - Cell without incubation with primary antibody and secondary antibody (Blue).

Why choose a recombinant antibody?

 <p><b>Research with confidence</b> Consistent and reproducible results</p>	 <p><b>Long-term and scalable supply</b> Recombinant technology</p>
 <p><b>Success from the first experiment</b> Confirmed specificity</p>	 <p><b>Ethical standards compliant</b> Animal-free production</p>

Anti-GSTK1 antibody [EPR1939] (ab134173)

**Please note:** All products are "FOR RESEARCH USE ONLY. NOT FOR USE IN DIAGNOSTIC PROCEDURES"

### Our Abpromise to you: Quality guaranteed and expert technical support

- Replacement or refund for products not performing as stated on the datasheet
- Valid for 12 months from date of delivery
- Response to your inquiry within 24 hours

- We provide support in Chinese, English, French, German, Japanese and Spanish
- Extensive multi-media technical resources to help you
- We investigate all quality concerns to ensure our products perform to the highest standards

If the product does not perform as described on this datasheet, we will offer a refund or replacement. For full details of the Abpromise, please visit <https://www.abcam.cn/abpromise> or contact our technical team.

### **Terms and conditions**

---

- Guarantee only valid for products bought direct from Abcam or one of our authorized distributors