

Anti-GSK3 beta antibody ab131356

[28 References](#) [3 图像](#)

概述

产品名称	Anti-GSK3 beta抗体
描述	兔多克隆抗体to GSK3 beta
宿主	Rabbit
经测试应用	适用于: WB, IHC-P, ICC/IF
种属反应性	与反应: Mouse, Rat, Human
免疫原	Synthetic peptide conjugated to KLH, surrounding amino acids 7-11 (TTSFA) of Human GSK3 beta (NP_001139628.1).

 [Run BLAST with](#)

 [Run BLAST with](#)

阳性对照

A2780 and HT29 cell extracts; HeLa cells; Human breast carcinoma tissue

常规说明

The Life Science industry has been in the grips of a reproducibility crisis for a number of years. Abcam is leading the way in addressing this with our range of recombinant monoclonal antibodies and knockout edited cell lines for gold-standard validation. Please check that this product meets your needs before purchasing.

If you have any questions, special requirements or concerns, please send us an inquiry and/or contact our Support team ahead of purchase. Recommended alternatives for this product can be found below, along with publications, customer reviews and Q&As

性能

形式	Liquid
存放说明	Shipped at 4°C. Store at -20°C. Stable for 12 months at -20°C.
存储溶液	pH: 7.40 Preservative: 0.02% Sodium azide Constituents: 49% PBS, 50% Glycerol (glycerin, glycerine), 0.88% Sodium chloride
纯度	PBS is without Mg ²⁺ and Ca ²⁺ Immunogen affinity purified
纯化说明	ab131356 is purified by affinity chromatography using epitope specific peptide.
克隆	多克隆

同种型

IgG

应用

The Abpromise guarantee

Abpromise™承诺保证使用ab131356于以下的经测试应用

“应用说明”部分下显示的仅为推荐的起始稀释度;实际最佳的稀释度/浓度应由使用者检定。

应用	Ab评论	说明
WB		1/500 - 1/1000. Predicted molecular weight: 48 kDa.
IHC-P		1/50 - 1/100.
ICC/IF		1/100 - 1/200.

靶标

功能

Participates in the Wnt signaling pathway. Implicated in the hormonal control of several regulatory proteins including glycogen synthase, MYB and the transcription factor JUN. Phosphorylates JUN at sites proximal to its DNA-binding domain, thereby reducing its affinity for DNA. Phosphorylates MUC1 in breast cancer cells, and decreases the interaction of MUC1 with CTNNB1/beta-catenin. Phosphorylates CTNNB1/beta-catenin. Phosphorylates SNAI1. Plays an important role in ERBB2-dependent stabilization of microtubules at the cell cortex. Prevents the phosphorylation of APC and CLASP2, allowing its association with the cell membrane. In turn, membrane-bound APC allows the localization of MACF1 to the cell membrane, which is required for microtubule capture and stabilization. Phosphorylates MACF1 and this phosphorylation inhibits the binding of MACF1 to microtubules which is critical for its role in bulge stem cell migration and skin wound repair.

组织特异性

Expressed in testis, thymus, prostate and ovary and weakly expressed in lung, brain and kidney.

序列相似性

Belongs to the protein kinase superfamily. CMGC Ser/Thr protein kinase family. GSK-3 subfamily. Contains 1 protein kinase domain.

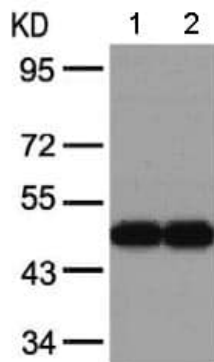
翻译后修饰

Phosphorylated by AKT1 and ILK1. Activated by phosphorylation at Tyr-216.

细胞定位

Cytoplasm. Nucleus. Cell membrane. The phosphorylated form shows localization to cytoplasm and cell membrane. The MEMO1-RHOA-DIAPH1 signaling pathway controls localization of the phosphorylated form to the cell membrane.

图片



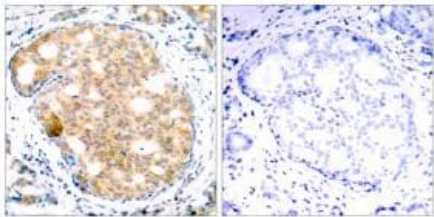
Western blot - Anti-GSK3 beta antibody (ab131356)

All lanes : Anti-GSK3 beta antibody (ab131356) at 1/500 dilution

Lane 1 : A2780 cell extract

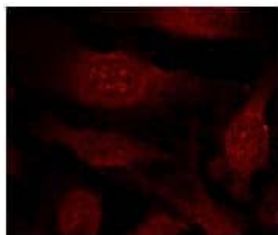
Lane 2 : HT29 cell extract

Predicted band size: 48 kDa



Immunohistochemistry (Formalin/PFA-fixed paraffin-embedded sections) - Anti-GSK3 beta antibody (ab131356)

Immunohistochemical analysis of paraffin embedded Human breast carcinoma tissue labelling GSK3 beta with ab131356 at a dilution of 1/50. Picture on the right was preincubated with blocking peptide.



Immunocytochemistry/ Immunofluorescence - Anti-GSK3 beta antibody (ab131356)

Immunofluorescence of methanol-fixed HeLa cells staining GSK3 beta with ab131356 at a dilution of 1/100.

Please note: All products are "FOR RESEARCH USE ONLY. NOT FOR USE IN DIAGNOSTIC PROCEDURES"

Our Abpromise to you: Quality guaranteed and expert technical support

- Replacement or refund for products not performing as stated on the datasheet
- Valid for 12 months from date of delivery
- Response to your inquiry within 24 hours

- We provide support in Chinese, English, French, German, Japanese and Spanish
- Extensive multi-media technical resources to help you
- We investigate all quality concerns to ensure our products perform to the highest standards

If the product does not perform as described on this datasheet, we will offer a refund or replacement. For full details of the Abpromise, please visit <https://www.abcam.cn/abpromise> or contact our technical team.

Terms and conditions

- Guarantee only valid for products bought direct from Abcam or one of our authorized distributors