


Anti-GRPR antibody ab39883

★★★★☆ [5 Abreviews](#) [8 References](#) [1 图像](#)

概述

产品名称	Anti-GRPR抗体
描述	兔多克隆抗体to GRPR
宿主	Rabbit
经测试应用	适用于: WB
种属反应性	与反应: Human 预测可用于: Mouse, Rat, Chicken 
免疫原	Synthetic peptide conjugated to KLH derived from within residues 300 - 400 of Human GRPR. 参阅Abcam的专有抗源政策(Peptide available as ab39961 .)
常规说明	<p>The Life Science industry has been in the grips of a reproducibility crisis for a number of years. Abcam is leading the way in addressing this with our range of recombinant monoclonal antibodies and knockout edited cell lines for gold-standard validation. Please check that this product meets your needs before purchasing.</p> <p>If you have any questions, special requirements or concerns, please send us an inquiry and/or contact our Support team ahead of purchase. Recommended alternatives for this product can be found below, along with publications, customer reviews and Q&As</p>

性能

形式	Liquid
存放说明	Shipped at 4°C. Store at +4°C short term (1-2 weeks). Upon delivery aliquot. Store at -20°C or -80°C. Avoid freeze / thaw cycle.
存储溶液	<p>pH: 7.40</p> <p>Preservative: 0.02% Sodium azide</p> <p>Constituent: PBS</p> <p>Batches of this product that have a concentration < 1mg/ml may have BSA added as a stabilising agent. If you would like information about the formulation of a specific lot, please contact our scientific support team who will be happy to help.</p>
纯度	Immunogen affinity purified
克隆	多克隆
同种型	IgG

应用

The Abpromise guarantee

Abpromise™承诺保证使用ab39883于以下的经测试应用

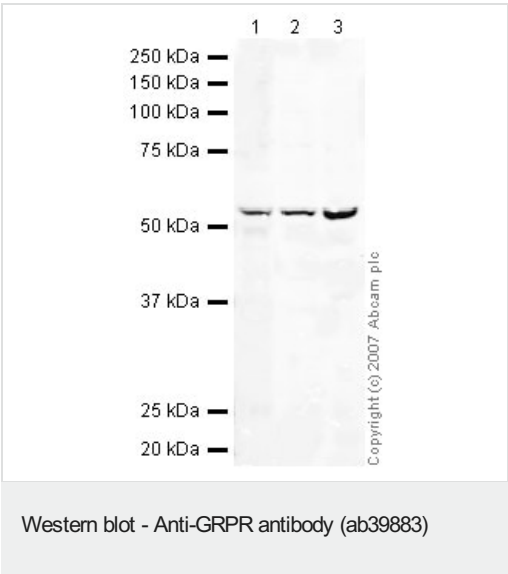
“应用说明”部分 下显示的仅为推荐的起始稀释度;实际最佳的稀释度/浓度应由使用者检定。

应用	Ab评论	说明
WB	★★★★★ (1)	Use a concentration of 1 µg/ml. Detects a band of approximately 53 kDa (predicted molecular weight: 43 kDa).

靶标

功能	Receptor for gastrin releasing peptide (GRP). This receptor mediates its action by association with G proteins that activate a phosphatidylinositol-calcium second messenger system.
组织特异性	Highly expressed in pancreas. Also expressed in stomach, adrenal cortex and brain.
序列相似性	Belongs to the G-protein coupled receptor 1 family.
细胞定位	Cell membrane.

图片



All lanes : Anti-GRPR antibody (ab39883) at 1 µg/ml

Lane 1 : Brain (Human) Membrane Lysate

Lane 2 : MDA MB 361 (Human breast adenocarcinoma cell line) Whole Cell Lysate

Lane 3 : Caco-2 whole cell lysate ([ab3950](#))

Lysates/proteins at 20 µg per lane.

Secondary

All lanes : IRDye 680 Conjugated Goat Anti-Rabbit IgG (H+L) at 1/10000 dilution

Performed under reducing conditions.

Predicted band size: 43 kDa

Observed band size: 53 kDa

This protein is known to be glycosylated which could explain the difference between the predicted molecular weight of 43kDa

according to Swiss Prot and the observed molecular weight of 53kDa.

Please note: All products are "FOR RESEARCH USE ONLY. NOT FOR USE IN DIAGNOSTIC PROCEDURES"

Our Abpromise to you: Quality guaranteed and expert technical support

- Replacement or refund for products not performing as stated on the datasheet
- Valid for 12 months from date of delivery
- Response to your inquiry within 24 hours
- We provide support in Chinese, English, French, German, Japanese and Spanish
- Extensive multi-media technical resources to help you
- We investigate all quality concerns to ensure our products perform to the highest standards

If the product does not perform as described on this datasheet, we will offer a refund or replacement. For full details of the Abpromise, please visit <https://www.abcam.cn/abpromise> or contact our technical team.

Terms and conditions

- Guarantee only valid for products bought direct from Abcam or one of our authorized distributors