


Anti-GRP94 antibody ab13509

★★★★★ [1 Abreviews](#) [19 References](#) [3 图像](#)

概述

产品名称	Anti-GRP94抗体
描述	兔多克隆抗体to GRP94
宿主	Rabbit
经测试应用	适用于: WB, ICC/IF
种属反应性	与反应: Mouse, Rat, Human
免疫原	Synthetic peptide corresponding to Mouse GRP94 aa 787-802 (C terminal) conjugated to Keyhole Limpet Haemocyanin (KLH). Sequence: EEEEETEKESTEKDEL Database link: P08113
	 Run BLAST with  Run BLAST with

常规说明

The Life Science industry has been in the grips of a reproducibility crisis for a number of years. Abcam is leading the way in addressing this with our range of recombinant monoclonal antibodies and knockout edited cell lines for gold-standard validation. Please check that this product meets your needs before purchasing.

If you have any questions, special requirements or concerns, please send us an inquiry and/or contact our Support team ahead of purchase. Recommended alternatives for this product can be found below, along with publications, customer reviews and Q&As

性能

形式	Liquid
存放说明	Shipped at 4°C. Upon delivery aliquot and store at -20°C or -80°C. Avoid repeated freeze / thaw cycles.
存储溶液	Preservative: 0.09% Sodium azide Constituents: 50% Glycerol (glycerin, glycerine), 49% PBS
纯度	Protein A purified
克隆	多克隆
同种型	IgG

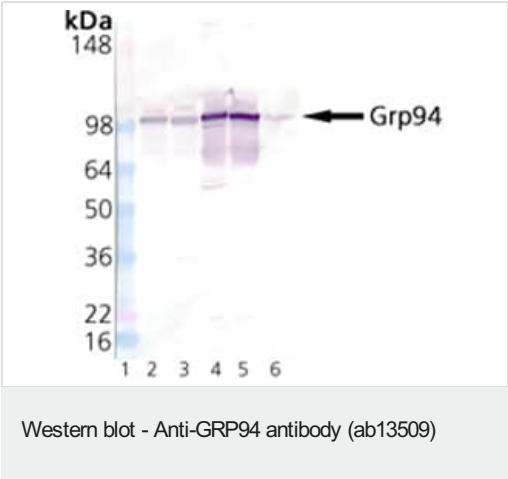
应用

The Abpromise guarantee Abpromise™ 承诺保证使用ab13509于以下的经测试应用		
“应用说明”部分 下显示的仅为推荐的起始稀释度;实际最佳的稀释度/浓度应由使用者检定。		
应用	Ab评论	说明
WB	★★★★★ (1)	Use at an assay dependent concentration. Predicted molecular weight: 94 kDa. 2µg/mL of ab13509 detects of Grp94 in 20µg of Rat Brain Tissue Extract using colorimetric analysis. 1/2000 for ECL detection.
ICC/IF		Use a concentration of 1 µg/ml.

靶标

功能	Molecular chaperone that functions in the processing and transport of secreted proteins. Functions in endoplasmic reticulum associated degradation (ERAD). Has ATPase activity.
序列相似性	Belongs to the heat shock protein 90 family.
细胞定位	Endoplasmic reticulum lumen. Melanosome. Identified by mass spectrometry in melanosome fractions from stage I to stage IV.

图片



All lanes : Anti-GRP94 antibody (ab13509) at 1/1000 dilution

Lane 1 : Molecular weight ladder

Lane 2 : Lysates prepared from rat brain

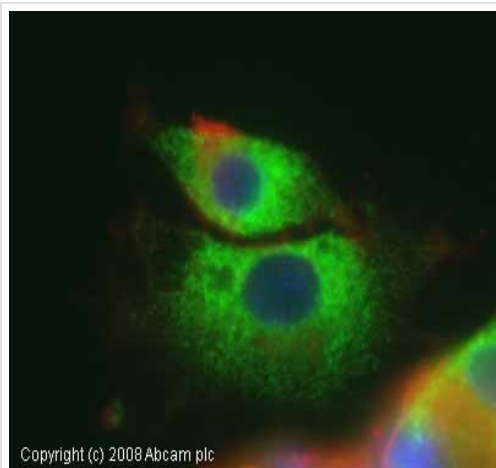
Lane 3 : Lysates prepared from mouse brain

Lane 4 : Lysates prepared from rat liver microsomes

Lane 5 : Lysates prepared from mouse liver microsomes

Lane 6 : Lysates prepared from human liver microsomes

Predicted band size: 94 kDa



Immunocytochemistry/ Immunofluorescence - Anti-GRP94 antibody (ab13509)

ICC/IF image of ab13509 stained rat PC12 cells. The cells were 4% PFA and 100% methanol fixed (10 min) and then incubated in 1% BSA / 10% normal goat serum / 0.3M glycine in 0.1% PBS-Tween for 1h to permeabilise the cells and block non-specific protein-protein interactions. The cells were then incubated with the antibody (ab13509, 1 µg/ml) overnight at +4°C. The secondary antibody (green) was Alexa Fluor® 488 goat anti-rabbit IgG (H+L) used at a 1/1000 dilution for 1h. Alexa Fluor® 594 WGA was used to label plasma membranes (red) at a 1/200 dilution for 1h. DAPI was used to stain the cell nuclei (blue).



Western blot - Anti-GRP94 antibody (ab13509)

Please note: All products are "FOR RESEARCH USE ONLY. NOT FOR USE IN DIAGNOSTIC PROCEDURES"

Our Abpromise to you: Quality guaranteed and expert technical support

- Replacement or refund for products not performing as stated on the datasheet
- Valid for 12 months from date of delivery

- Response to your inquiry within 24 hours
- We provide support in Chinese, English, French, German, Japanese and Spanish
- Extensive multi-media technical resources to help you
- We investigate all quality concerns to ensure our products perform to the highest standards

If the product does not perform as described on this datasheet, we will offer a refund or replacement. For full details of the Abpromise, please visit <https://www.abcam.cn/abpromise> or contact our technical team.

Terms and conditions

- Guarantee only valid for products bought direct from Abcam or one of our authorized distributors