

Anti-Grp75/MOT antibody [9F8] ab171089

[4 References](#) [6 图像](#)

概述

产品名称	Anti-Grp75/MOT抗体[9F8]
描述	小鼠单克隆抗体[9F8] to Grp75/MOT
宿主	Mouse
经测试应用	适用于: WB, ICC/IF, IP
种属反应性	与反应: Rat, Human, African green monkey
免疫原	Recombinant full length protein corresponding to Human Grp75/MOT. Expressed in 293T cells. Database link: Q8N1C8
阳性对照	WB: HEK-293T, HeLa, K-562, A-431, COS7, NRK, HeLa, HepG2, MCF7, COS7, L6 cell lysates, Rat brain, Rat skeletal muscle and Rat liver tissue extracts. ICC: HeLa cells.
常规说明	<p>The Life Science industry has been in the grips of a reproducibility crisis for a number of years. Abcam is leading the way in addressing this with our range of recombinant monoclonal antibodies and knockout edited cell lines for gold-standard validation. Please check that this product meets your needs before purchasing.</p> <p>If you have any questions, special requirements or concerns, please send us an inquiry and/or contact our Support team ahead of purchase. Recommended alternatives for this product can be found below, along with publications, customer reviews and Q&As</p>

性能

形式	Liquid
存放说明	Shipped at 4°C. Store at +4°C short term (1-2 weeks). Upon delivery aliquot. Store at -20°C long term. Avoid freeze / thaw cycle.
存储溶液	Preservative: 0.05% Sodium azide Constituents: 0.1% BSA, 30% Glycerol (glycerin, glycerine), 69% PBS
纯度	Protein A purified
克隆	单克隆
克隆编号	9F8
同种型	IgG

应用

The Abpromise guarantee

Abpromise™ 承诺保证使用 ab171089 于以下的经测试应用

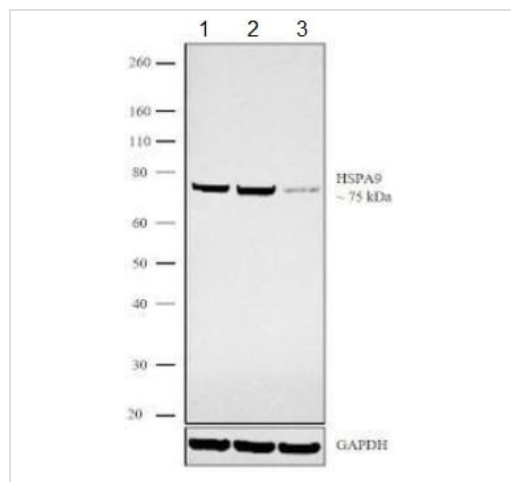
“应用说明”部分 下显示的仅为推荐的起始稀释度;实际最佳的稀释度/浓度应由使用者检定。

应用	Ab评论	说明
WB		1/1000. Predicted molecular weight: 74 kDa.
ICC/IF		1/50.
IP		Use at an assay dependent concentration. Use 2µg.

靶标

功能	Implicated in the control of cell proliferation and cellular aging. May also act as a chaperone.
序列相似性	Belongs to the heat shock protein 70 family.
翻译后修饰	Phosphorylated upon DNA damage, probably by ATM or ATR.
细胞定位	Mitochondrion.

图片



Western blot - Anti-Grp75/MOT antibody [9F8] (ab171089)

All lanes : Anti-Grp75/MOT antibody [9F8] (ab171089) at 1/1000 dilution

Lane 1 : Untransfected HeLa cells

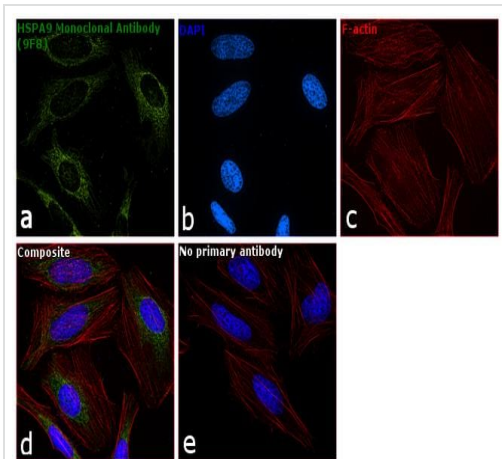
Lane 2 : HeLa cells transfected with scrambled siRNA

Lane 3 : HeLa cells transfected with Grp75/MOT siRNA

Secondary

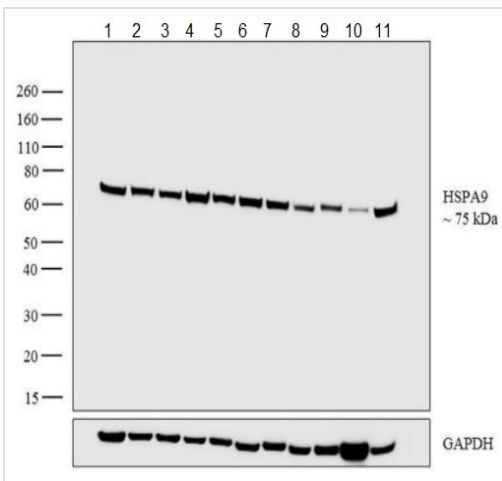
All lanes : Goat anti-Mouse IgG (H+L) HRP conjugate at 1/4000 dilution

Predicted band size: 74 kDa



Immunocytochemistry/ Immunofluorescence - Anti-Grp75/MOT antibody [9F8] (ab171089)

Immunofluorescence analysis of Grp75/MOT was performed using 70% confluent log phase HeLa cells. The cells were fixed with 4% paraformaldehyde for 10 minutes, permeabilized with 0.1% Triton™ X-100 for 15 minutes, and blocked with 1% BSA for 1 hour at room temperature. The cells were labeled with ab171089 at 1:50 dilution in 0.1% BSA, incubated at 4°C overnight and then labeled with Goat anti-Mouse IgG (H+L) Secondary Antibody, Alexa Fluor® 488 conjugate at a dilution of 1:2000 for 45 minutes at room temperature (Panel a: green). Nuclei (Panel b: blue) were stained with DAPI. F-actin (Panel c: red) was stained with Rhodamine Phalloidin. Panel d represents the merged image showing mitochondrial localization. Panel e represents control cells with no primary antibody to assess background. The images were captured at 60X magnification.



Western blot - Anti-Grp75/MOT antibody [9F8] (ab171089)

All lanes : Anti-Grp75/MOT antibody [9F8] (ab171089) at 1/1000 dilution

Lane 1 : HeLa (Human cervix adenocarcinoma epithelial cell) whole cell lysate

Lane 2 : HEK-293 (Human epithelial cell line from embryonic kidney) whole cell lysate

Lane 3 : A-431 (Human epidermoid carcinoma cell line) whole cell lysate

Lane 4 : K-562 (Human chronic myelogenous leukemia lymphoblast cell line) whole cell lysate

Lane 5 : Hep G2 (Human liver hepatocellular carcinoma cell line) whole cell lysate

Lane 6 : MCF7 (Human breast adenocarcinoma cell line) whole cell lysate

Lane 7 : COS-7 (African green monkey kidney fibroblast-like cell line) cell lysate

Lane 8 : L6 (Rat skeletal muscle cell line) whole cell lysate

Lane 9 : Rat brain cell lysate

Lane 10 : Rat skeletal muscle cell lysate

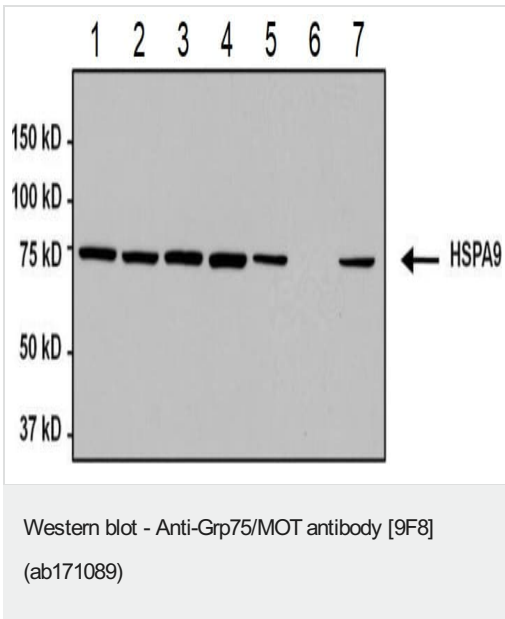
Lane 11 : Rat liver cell lysate

Lysates/proteins at 30 µg per lane.

Secondary

All lanes : Goat anti-Mouse IgG (H+L) HRP conjugate at 1/4000 dilution

Predicted band size: 74 kDa



All lanes : Anti-Gp75/MOT antibody [9F8] (ab171089) at 1/1000 dilution

Lane 1 : HEK-293T (Human epithelial cell line from embryonic kidney transformed with large T antigen) whole cell lysate

Lane 2 : HeLa (Human cervix adenocarcinoma epithelial cell) whole cell lysate

Lane 3 : K-562 (Human chronic myelogenous leukemia lymphoblast cell line) whole cell lysate

Lane 4 : A-431 (Human epidermoid carcinoma cell line) whole cell lysate

Lane 5 : COS-7 (African green monkey kidney fibroblast-like cell line) whole cell lysate

Lane 6 : NIH/3T3 (Mouse embryonic fibroblast cell line) whole cell lysate

Lane 7 : NRK (Rat kidney cell line) whole cell lysate

Lysates/proteins at 50 µg per lane.

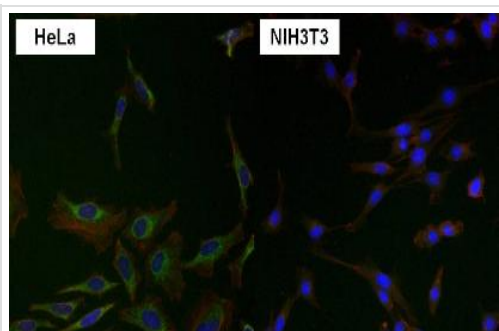
Secondary

All lanes : Goat anti-Mouse HRP at 1/20000 dilution

Developed using the ECL technique.

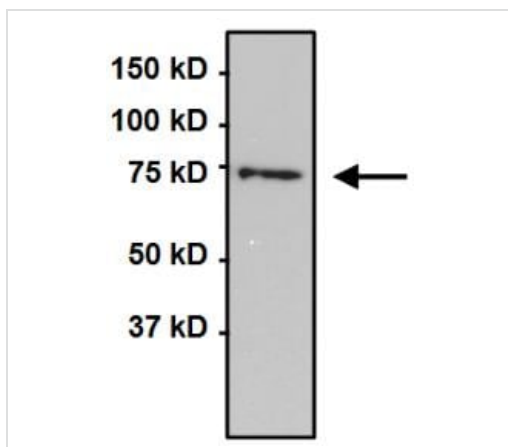
Predicted band size: 74 kDa

4-20% Tris-HCL polyacrylamide gel



Immunocytochemistry/ Immunofluorescence - Anti-Grp75/MOT antibody [9F8] (ab171089)

Immunofluorescent analysis of HeLa cells labeling Grp75/MOT with ab171089 at 1/50 dilution (green) compared to negative control NIH3T3 cells.



Immunoprecipitation - Anti-Grp75/MOT antibody [9F8] (ab171089)

Detection of Grp75/MOT in Immunoprecipitates of HeLa whole cell lysates using ab171089 at 2 μ g per 750 μ g lysate. Detected with ab171089 at 1/1000 dilution.

Please note: All products are "FOR RESEARCH USE ONLY. NOT FOR USE IN DIAGNOSTIC PROCEDURES"

Our Abpromise to you: Quality guaranteed and expert technical support

- Replacement or refund for products not performing as stated on the datasheet
- Valid for 12 months from date of delivery
- Response to your inquiry within 24 hours
- We provide support in Chinese, English, French, German, Japanese and Spanish
- Extensive multi-media technical resources to help you
- We investigate all quality concerns to ensure our products perform to the highest standards

If the product does not perform as described on this datasheet, we will offer a refund or replacement. For full details of the Abpromise, please visit <https://www.abcam.cn/abpromise> or contact our technical team.

Terms and conditions

- Guarantee only valid for products bought direct from Abcam or one of our authorized distributors