

Anti-Growth Cone antibody [2G13] ab7762

★★★★★ [1 Abreviews](#) [4 References](#) [1 图像](#)

概述

产品名称	Anti-Growth Cone抗体[2G13]
描述	小鼠单克隆抗体[2G13] to Growth Cone
宿主	Mouse
经测试应用	适用于: WB, IHC-Fr, ICC/IF, IHC-P 不适用于: Flow Cyt
种属反应性	与反应: Mouse, Rat, Chicken
免疫原	Tissue, cells or virus corresponding to Chicken Growth Cone. Embryonic chick tectal membranes
常规说明	This antibody is useful as a general reagent for the detection of axonal growth cones in tissue sections and potentially a key marker in neuronal development research.

This antibody recognises an intracellular protein 2G13p which is restricted to growth cones in developing brain and embryonic neurons in culture. The protein 2G13p also appears to be associated with filamentous actin in the growth cones suggesting a role for 2G13p in growth cone motility. This antibody is suitable for use in immunohistological studies of both frozen and paraffin-embedded sections, staining growth cones, including their filopodia and lamellipodies.

The Life Science industry has been in the grips of a reproducibility crisis for a number of years. Abcam is leading the way in addressing this with our range of recombinant monoclonal antibodies and knockout edited cell lines for gold-standard validation. Please check that this product meets your needs before purchasing.

If you have any questions, special requirements or concerns, please send us an inquiry and/or contact our Support team ahead of purchase. Recommended alternatives for this product can be found below, along with publications, customer reviews and Q&As

性能

形式	Liquid
存放说明	Shipped at 4°C. Store at +4°C short term (1-2 weeks). Upon delivery aliquot. Store at -20°C or -80°C. Avoid freeze / thaw cycle.
纯度	Tissue culture supernatant
Primary antibody说明	This antibody recognises an intracellular protein 2G13p which is restricted to growth cones in developing brain and embryonic neurons in culture. The protein 2G13p also appears to be

associated with filamentous actin in the growth cones suggesting a role for 2G13p in growth cone motility. This antibody is suitable for use in immunohistological studies of both frozen and paraffin-embedded sections, staining growth cones, including their filopodia and lamellipodies.

克隆	单克隆
克隆编号	2G13
骨髓瘤	NS1
同种型	IgM

应用

The Abpromise guarantee **Abpromise™** 承诺保证使用ab7762于以下的经测试应用

“应用说明”部分 下显示的仅为推荐的起始稀释度;实际最佳的稀释度/浓度应由使用者检定。

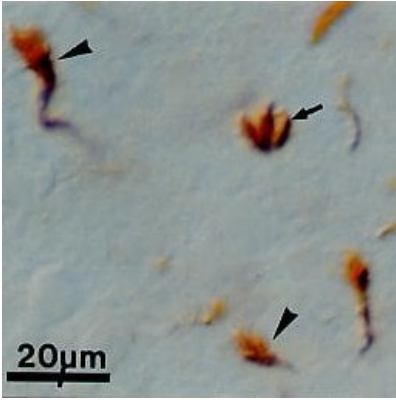
应用	Ab评论	说明
WB		Use at an assay dependent concentration.
IHC-Fr		Use at an assay dependent concentration.
ICC/IF	★★★★★ (1)	Use at an assay dependent concentration.
IHC-P		1/4. This product does not require protein digestion pre-treatment sections e.g. trypsin or pronase, and does not require antigen retrieval using heat treatment prior to staining.

应用说明 Is unsuitable for Flow Cyt.

靶标

相关性 Growth cones are specialised sensory structures located at the tip of neurites which are involved in the mechanism that enable elongation and navigation of axons during neuronal development.

图片



Immunohistochemical staining of growth cones of primary olfactory neurons within the olfactory bulb in the developing rat brain using ab7762.

Immunohistochemistry (Formalin/PFA-fixed paraffin-embedded sections) - Anti-Growth Cone antibody [2G13] (ab7762)

Please note: All products are "FOR RESEARCH USE ONLY. NOT FOR USE IN DIAGNOSTIC PROCEDURES"

Our Abpromise to you: Quality guaranteed and expert technical support

- Replacement or refund for products not performing as stated on the datasheet
- Valid for 12 months from date of delivery
- Response to your inquiry within 24 hours
- We provide support in Chinese, English, French, German, Japanese and Spanish
- Extensive multi-media technical resources to help you
- We investigate all quality concerns to ensure our products perform to the highest standards

If the product does not perform as described on this datasheet, we will offer a refund or replacement. For full details of the Abpromise, please visit <https://www.abcam.cn/abpromise> or contact our technical team.

Terms and conditions

- Guarantee only valid for products bought direct from Abcam or one of our authorized distributors