

### Anti-groEL antibody [9A1/2] ab82592

[18 References](#) [1 图像](#)

#### 概述

产品名称	Anti-groEL 抗体[9A1/2]
描述	小鼠单克隆抗体[9A1/2] to groEL
宿主	Mouse
经测试应用	适用于: WB, IP
种属反应性	与反应: Escherichia coli
免疫原	Full length protein corresponding to Escherichia coli groEL. Strain K12 Database link: <a href="#">P0A6F5</a>
阳性对照	E. coli lysate.
常规说明	<p>This product was changed from ascites to tissue culture supernatant on 22<sup>nd</sup> May 2019. Please note that the dilutions may need to be adjusted accordingly. If you have any questions, please do not hesitate to contact our scientific support team.</p> <p>The Life Science industry has been in the grips of a reproducibility crisis for a number of years. Abcam is leading the way in addressing this with our range of recombinant monoclonal antibodies and knockout edited cell lines for gold-standard validation. Please check that this product meets your needs before purchasing.</p> <p>If you have any questions, special requirements or concerns, please send us an inquiry and/or contact our Support team ahead of purchase. Recommended alternatives for this product can be found below, along with publications, customer reviews and Q&amp;As</p>

#### 性能

形式	Liquid
存放说明	Shipped at 4°C. Upon delivery aliquot and store at -20°C. Avoid freeze / thaw cycles.
存储溶液	Preservative: 0.09% Sodium azide Constituents: PBS, 50% Glycerol (glycerin, glycerine)
纯度	Tissue culture supernatant
纯化说明	Purified from TCS.
克隆	单克隆
克隆编号	9A1/2
同种型	IgG1

## 应用

**The Abpromise guarantee**      **Abpromise™** 承诺保证使用 ab82592 于以下的经测试应用

“应用说明”部分 下显示的仅为推荐的起始稀释度;实际最佳的稀释度/浓度应由使用者检定。

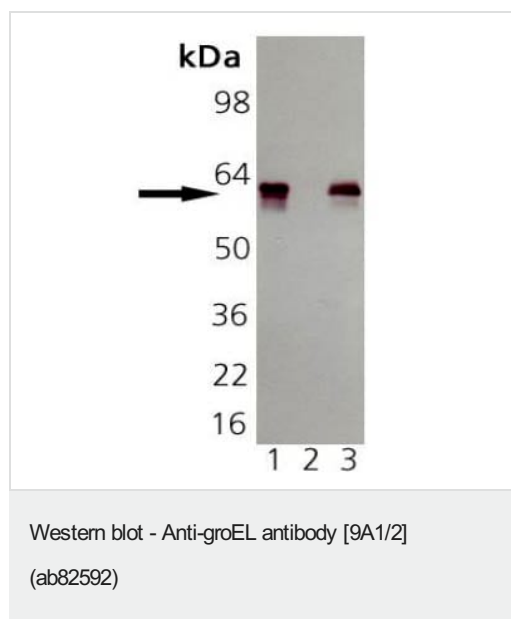
应用	Ab评论	说明
WB		Use at an assay dependent concentration. Detects a band of approximately 57 kDa (predicted molecular weight: 57 kDa).
IP		Use at an assay dependent concentration.

## 靶标

**相关性**      The bacterial chaperonin groEL is a double toroidal assembly, which together with the action of the ring-shaped oligomeric cochaperonin, GroES, facilitates protein folding in an ATP dependent manner.

**细胞定位**      Cytoplasmic

## 图片



**All lanes** : Anti-groEL antibody [9A1/2] (ab82592) at 1/1000 dilution

**Lane 1** : groEL recombinant E. coli protein

**Lane 2** : Hsp60 recombinant human protein (negative control)

**Lane 3** : E. coli lysate

Developed using the ECL technique.

**Predicted band size:** 57 kDa

**Observed band size:** 57 kDa

This image was generated using the ascites version of the product.

**Please note:** All products are "FOR RESEARCH USE ONLY. NOT FOR USE IN DIAGNOSTIC PROCEDURES"

## Our Abpromise to you: Quality guaranteed and expert technical support

- Replacement or refund for products not performing as stated on the datasheet

- Valid for 12 months from date of delivery
- Response to your inquiry within 24 hours
  
- We provide support in Chinese, English, French, German, Japanese and Spanish
- Extensive multi-media technical resources to help you
- We investigate all quality concerns to ensure our products perform to the highest standards

If the product does not perform as described on this datasheet, we will offer a refund or replacement. For full details of the Abpromise, please visit <https://www.abcam.cn/abpromise> or contact our technical team.

### **Terms and conditions**

---

- Guarantee only valid for products bought direct from Abcam or one of our authorized distributors