

Anti-GRIM19 antibody [6E1BH7] ab110240

敲除验证

★★★★★ 4 Abreviews 51 References 4 图像

概述

产品名称	Anti-GRIM19抗体[6E1BH7]
描述	小鼠单克隆抗体[6E1BH7] to GRIM19
宿主	Mouse
经测试应用	适用于: WB, ICC/IF, Flow Cyt
种属反应性	与反应: Mouse, Rat, Cow, Human
免疫原	Recombinant full length protein. This information is considered to be commercially sensitive.
阳性对照	WB: HeLa and Jurkat cell lysates; Human heart, Bovine heart, Rat heart, and Mouse heart isolated mitochondria. ICC/IF: Human fibroblasts. Flow Cyt: HeLa cells.
常规说明	<p>This antibody clone is manufactured by Abcam. If you require a custom buffer formulation or conjugation for your experiments, please contact orders@abcam.com.</p> <p>The Life Science industry has been in the grips of a reproducibility crisis for a number of years. Abcam is leading the way in addressing this with our range of recombinant monoclonal antibodies and knockout edited cell lines for gold-standard validation. Please check that this product meets your needs before purchasing.</p> <p>If you have any questions, special requirements or concerns, please send us an inquiry and/or contact our Support team ahead of purchase. Recommended alternatives for this product can be found below, along with publications, customer reviews and Q&As</p> <p>Product was previously marketed under the MitoSciences sub-brand.</p>

性能

形式	Liquid
存放说明	Shipped at 4°C. Store at +4°C. Do Not Freeze.
存储溶液	<p>pH: 7.5</p> <p>Preservative: 0.02% Sodium azide</p> <p>Constituent: HEPES buffered saline</p>
纯化说明	ab110240 was produced in vitro using hybridomas grown in serum-free medium, and then purified by biochemical fractionation.

克隆	单克隆
克隆编号	6E1BH7
同种型	IgG2b
轻链类型	kappa

应用

The Abpromise guarantee **Abpromise™**承诺保证使用ab110240于以下的经测试应用

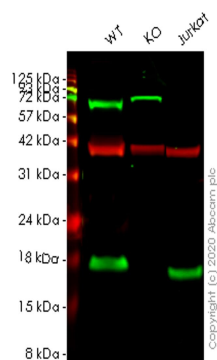
“应用说明”部分 下显示的仅为推荐的起始稀释度;实际最佳的稀释度/浓度应由使用者检定。

应用	Ab评论	说明
WB	★★★★★ (1)	Use a concentration of 1 µg/ml. Predicted molecular weight: 17 kDa.
ICC/IF	★★★★★ (1)	Use a concentration of 1 µg/ml.
Flow Cyt		Use a concentration of 1 µg/ml. ab170192 - Mouse monoclonal IgG2b, is suitable for use as an isotype control with this antibody.

靶标

功能	Accessory subunit of the mitochondrial membrane respiratory chain NADH dehydrogenase (Complex I), that is believed not to be involved in catalysis. Complex I functions in the transfer of electrons from NADH to the respiratory chain. The immediate electron acceptor for the enzyme is believed to be ubiquinone. Involved in the interferon/all-trans-retinoic acid (IFN/RA) induced cell death. This apoptotic activity is inhibited by interaction with viral IRF1. Prevents the transactivation of STAT3 target genes. May play a role in CARD15-mediated innate mucosal responses and serve to regulate intestinal epithelial cell responses to microbes.
组织特异性	Widely expressed, with highest expression in heart, skeletal muscle, liver, kidney and placenta. In intestinal mucosa, down-regulated in areas involved in Crohn disease and ulcerative colitis.
疾病相关	Defects in NDUFA13 may be a cause of susceptibility to Hurtle cell thyroid carcinoma (HCTC) [MIM:607464]. Hurtle cell thyroid carcinoma accounts for approximately 3% of all thyroid cancers. Although they are classified as variants of follicular neoplasms, they are more often multifocal and somewhat more aggressive and are less likely to take up iodine than are other follicular neoplasms.
序列相似性	Belongs to the complex I NDUFA13 subunit family.
发展阶段	Expressed in numerous fetal tissues.
细胞定位	Mitochondrion inner membrane. Nucleus. May be translocated into the nucleus upon IFN/RA treatment.

图片



Western blot - Anti-GRIM19 antibody [6E1BH7] (ab110240)

All lanes : Anti-GRIM19 antibody [6E1BH7] (ab110240) at 1/1000 dilution

Lane 1 : Wild-type HeLa cell lysate

Lane 2 : NDUFA13 knockout HeLa cell lysate

Lane 3 : Jurkat cell lysate

Lysates/proteins at 20 µg per lane.

Secondary

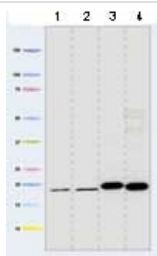
All lanes : Goat Anti-Rabbit IgG H&L (IRDye® 680RD) preadsorbed ([ab216777](#)) at 1/10000 dilution

Predicted band size: 17 kDa

Observed band size: 17 kDa

Lanes 1-3: Merged signal (red and green). Green - ab110240 observed at 17 kDa. Red - loading control [ab181602](#) observed at 36 kDa.

ab110240 GRIM19 antibody [6E1BH7] was shown to specifically react with GRIM19 in wild-type HeLa cells. Loss of signal was observed when knockout cell line [ab265863](#) (knockout cell lysate [ab257136](#)) was used. Wild-type and GRIM19 knockout samples were subjected to SDS-PAGE. ab110240 and Anti-GAPDH antibody[EPR16891] - Loading Control ([ab181602](#)) were incubated overnight at 4°C at 1 in 1000 dilution and 1 in 20000 dilution respectively. Blots were developed with Goat anti-Rabbit IgG H&L (IRDye® 680RD) preadsorbed ([ab216777](#)) and Goat anti-Mouse IgG H&L (IRDye® 800CW) preadsorbed ([ab216772](#)) secondary antibodies at 1 in 20000 dilution for 1 hour at room temperature before imaging.



Western blot - Anti-GRIM19 antibody [6E1BH7] (ab110240)

All lanes : Anti-GRIM19 antibody [6E1BH7] (ab110240) at 1 µg/ml

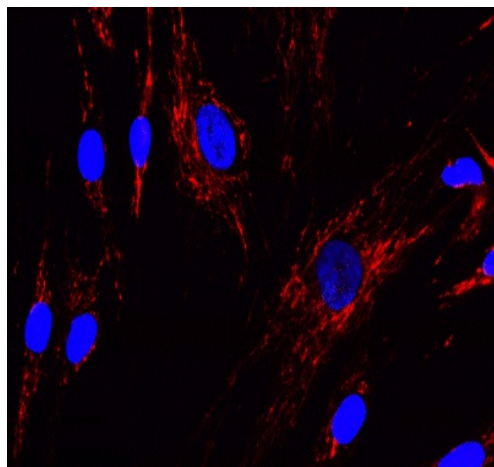
Lane 1 : Human heart mitochondria

Lane 2 : Bovine heart mitochondria

Lane 3 : Rat heart mitochondria

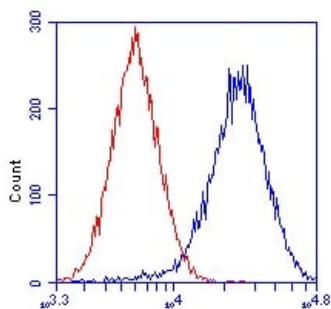
Lane 4 : Mouse heart mitochondria

Predicted band size: 17 kDa



Immunocytochemistry/ Immunofluorescence - Anti-GRIM19 antibody [6E1BH7] (ab110240)

Mitochondrial localization of GRIM19 visualized by immunocytochemistry using ab110240 at a concentration of 1 µg/mL. Cultured Human fibroblasts were fixed, permeabilized and then labeled with ab110240 followed by Alexa® 488 goat-anti-mouse IgG.



Flow Cytometry - Anti-GRIM19 antibody [6E1BH7] (ab110240)

HeLa cells were stained with 1 µg/mL ab110240 (blue) or an equal amount of an isotype control antibody (red) and analyzed by flow cytometry.

Please note: All products are "FOR RESEARCH USE ONLY. NOT FOR USE IN DIAGNOSTIC PROCEDURES"

Our Abpromise to you: Quality guaranteed and expert technical support

- Replacement or refund for products not performing as stated on the datasheet
- Valid for 12 months from date of delivery
- Response to your inquiry within 24 hours

- We provide support in Chinese, English, French, German, Japanese and Spanish
- Extensive multi-media technical resources to help you
- We investigate all quality concerns to ensure our products perform to the highest standards

If the product does not perform as described on this datasheet, we will offer a refund or replacement. For full details of the Abpromise, please visit <https://www.abcam.cn/abpromise> or contact our technical team.

Terms and conditions

- Guarantee only valid for products bought direct from Abcam or one of our authorized distributors