


Anti-GNB1 antibody ab137635

[3 References](#) [4 图像](#)

概述

产品名称	Anti-GNB1抗体
描述	兔多克隆抗体to GNB1
宿主	Rabbit
经测试应用	适用于: IHC-P, ICC/IF, WB
种属反应性	与反应: Mouse, Human 预测可用于: Rat, Chicken, Cow, Dog, Xenopus laevis, Xenopus tropicalis 
免疫原	Recombinant fragment, corresponding to a region within amino acids 67-271 of Human GNB1.
阳性对照	A431 whole cell lysate (ab7909) can be used as a positive control in WB. Jurkat whole cells lysate; Mouse brain whole cell lysate; methanol-fixed HeLa cells; Lung papillary Adeno Carcinoma.
常规说明	<p>The Life Science industry has been in the grips of a reproducibility crisis for a number of years. Abcam is leading the way in addressing this with our range of recombinant monoclonal antibodies and knockout edited cell lines for gold-standard validation. Please check that this product meets your needs before purchasing.</p> <p>If you have any questions, special requirements or concerns, please send us an inquiry and/or contact our Support team ahead of purchase. Recommended alternatives for this product can be found below, along with publications, customer reviews and Q&As</p>

性能

形式	Liquid
存放说明	Shipped at 4°C. Upon delivery aliquot. Store at -20°C or -80°C. Avoid freeze / thaw cycle.
存储溶液	pH: 7.00 Preservative: 0.025% Proclin 300 Constituents: 79% PBS, 20% Glycerol (glycerin, glycerine)
纯度	Immunogen affinity purified
克隆	多克隆
同种型	IgG

应用

The Abpromise guarantee

Abpromise™ 承诺保证使用 ab137635 于以下的经测试应用

“应用说明”部分下显示的仅为推荐的起始稀释度；实际最佳的稀释度/浓度应由使用者检定。

应用	Ab评论	说明
IHC-P		1/100 - 1/1000. Perform heat mediated antigen retrieval with citrate buffer pH 6 before commencing with IHC staining protocol.
ICC/IF		1/100 - 1/1000.
WB		1/5000 - 1/20000. Predicted molecular weight: 37 kDa.

靶标

功能

Guanine nucleotide-binding proteins (G proteins) are involved as a modulator or transducer in various transmembrane signaling systems. The beta and gamma chains are required for the GTPase activity, for replacement of GDP by GTP, and for G protein-effector interaction.

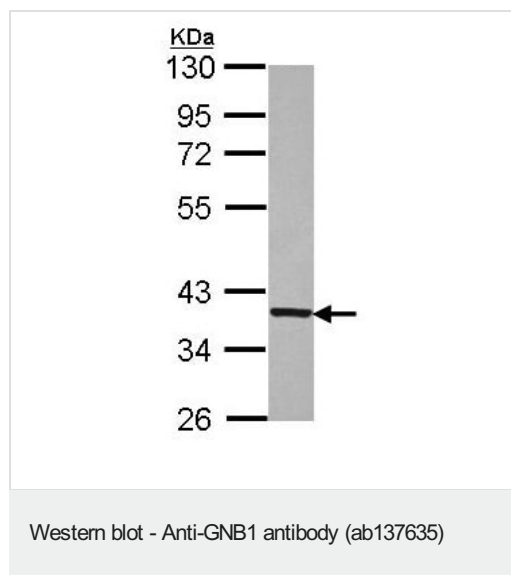
序列相似性

Belongs to the WD repeat G protein beta family.
Contains 7 WD repeats.

翻译后修饰

Phosphorylation at His-266 by NDKB contributes to G protein activation by increasing the high energetic phosphate transfer onto GDP.

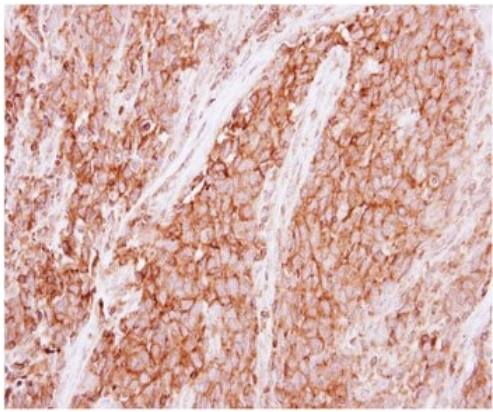
图片



Anti-GNB1 antibody (ab137635) at 1/5000 dilution + Jurkat whole cell lysate at 30 µg

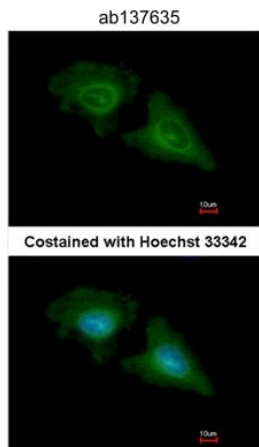
Predicted band size: 37 kDa

10% SDS Page



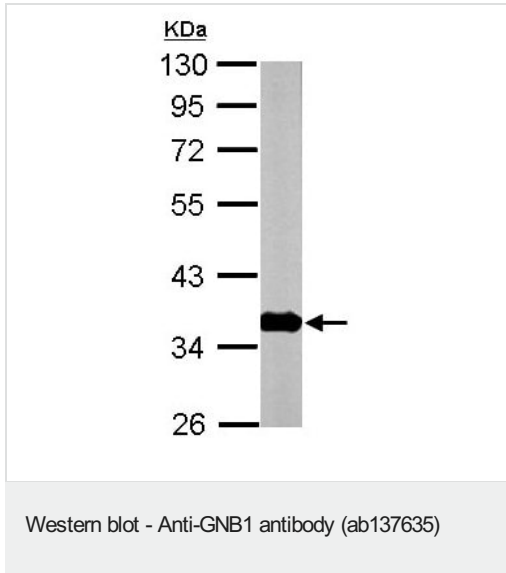
Immunohistochemical analysis of paraffin-embedded human Lung papillary Adeno Carcinoma, labelling GNB1 using ab137635 at 1/500 dilution.

Immunohistochemistry (Formalin/PFA-fixed paraffin-embedded sections) - Anti-GNB1 antibody (ab137635)



Immunofluorescence analysis of methanol-fixed HeLa cells, labelling GNB1 using ab137635 at 1/200 dilution. Lower panel represents cells costained with Hoechst 33342.

Immunocytochemistry/ Immunofluorescence - Anti-GNB1 antibody (ab137635)



Anti-GNB1 antibody (ab137635) at 1/10000 dilution + Mouse brain whole cells lysate at 50 µg

Predicted band size: 37 kDa

10% SDS Page

Please note: All products are "FOR RESEARCH USE ONLY. NOT FOR USE IN DIAGNOSTIC PROCEDURES"

Our Abpromise to you: Quality guaranteed and expert technical support

- Replacement or refund for products not performing as stated on the datasheet
- Valid for 12 months from date of delivery
- Response to your inquiry within 24 hours
- We provide support in Chinese, English, French, German, Japanese and Spanish
- Extensive multi-media technical resources to help you
- We investigate all quality concerns to ensure our products perform to the highest standards

If the product does not perform as described on this datasheet, we will offer a refund or replacement. For full details of the Abpromise, please visit <https://www.abcam.cn/abpromise> or contact our technical team.

Terms and conditions

- Guarantee only valid for products bought direct from Abcam or one of our authorized distributors