

Anti-GM130 antibody - BSA and Azide free ab169276

★★★★★ [8 Abreviews](#) [28 References](#) [3 图像](#)

概述

产品名称	Anti-GM130抗体- BSA and Azide free
描述	小鼠多克隆抗体to GM130 - BSA and Azide free
宿主	Mouse
经测试应用	适用于: WB, ICC/IF
种属反应性	与反应: Human
免疫原	Recombinant full length protein within Human GM130 aa 1-1000. The exact immunogen sequence used to generate this antibody is proprietary information. If additional detail on the immunogen is needed to determine the suitability of the antibody for your needs, please contact our Scientific Support team to discuss your requirements.

 [Run BLAST with](#)

 [Run BLAST with](#)

常规说明

The Life Science industry has been in the grips of a reproducibility crisis for a number of years. Abcam is leading the way in addressing this with our range of recombinant monoclonal antibodies and knockout edited cell lines for gold-standard validation. Please check that this product meets your needs before purchasing.

If you have any questions, special requirements or concerns, please send us an inquiry and/or contact our Support team ahead of purchase. Recommended alternatives for this product can be found below, along with publications, customer reviews and Q&As

性能

形式	Liquid
存放说明	Shipped at 4°C. Store at +4°C short term (1-2 weeks). Upon delivery aliquot. Store at -20°C long term. Avoid freeze / thaw cycle.
存储溶液	pH: 7.40 Constituent: PBS
无载体	是
纯度	Protein A purified
克隆	多克隆
同种型	IgG

应用

The Abpromise guarantee

Abpromise™ 承诺保证使用 ab169276 于以下的经测试应用

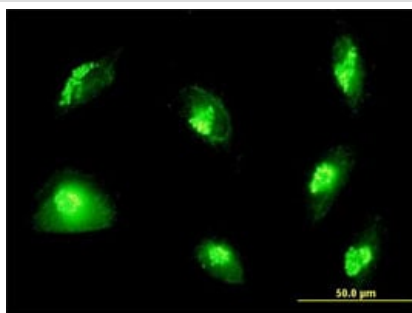
“应用说明”部分 下显示的仅为推荐的起始稀释度;实际最佳的稀释度/浓度应由使用者检定。

应用	Ab评论	说明
WB	★★★★☆ (3)	Use a concentration of 1 µg/ml. Predicted molecular weight: 112 kDa.
ICC/IF	★★★★★ (4)	Use a concentration of 7 µg/ml.

靶标

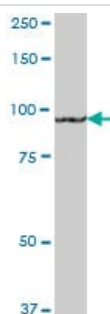
功能	Golgi auto-antigen; probably involved in maintaining cis-Golgi structure.
序列相似性	Belongs to the GOLGA2 family.
结构域	Extended rod-like protein with coiled-coil domains.
细胞定位	Golgi apparatus > Golgi stack membrane.

图片



Immunocytochemistry/ Immunofluorescence - Anti-GM130 antibody - BSA and Azide free (ab169276)

HepG2 (Human liver hepatocellular carcinoma cell line) cells stained for GM130 (green) using ab169276 at 7 µg/ml in ICC/IF.



Western blot - Anti-GM130 antibody - BSA and Azide free (ab169276)

Anti-GM130 antibody - BSA and Azide free (ab169276) at 1 µg/ml + Human placenta tissue lysate at 50 µg

Secondary

Goat Anti-Mouse IgG (H&L)-HRP at 1/2500 dilution

Developed using the ECL technique.

Predicted band size: 112 kDa



All lanes : Anti-GM130 antibody - BSA and Azide free (ab169276) at 1 µg/ml

Lane 1 : GM130 transfected HEK-293T (Human epithelial cell line from embryonic kidney transformed with large T antigen) lysate

Lane 2 : Non-transfected HEK-293T (Human epithelial cell line from embryonic kidney transformed with large T antigen) lysate

Lysates/proteins at 15 µl per lane.

Secondary

All lanes : Goat Anti-Mouse IgG (H&L)-HRP at 1/2500 dilution

Developed using the ECL technique.

Predicted band size: 112 kDa

Please note: All products are "FOR RESEARCH USE ONLY. NOT FOR USE IN DIAGNOSTIC PROCEDURES"

Our Abpromise to you: Quality guaranteed and expert technical support

- Replacement or refund for products not performing as stated on the datasheet
- Valid for 12 months from date of delivery
- Response to your inquiry within 24 hours
- We provide support in Chinese, English, French, German, Japanese and Spanish
- Extensive multi-media technical resources to help you
- We investigate all quality concerns to ensure our products perform to the highest standards

If the product does not perform as described on this datasheet, we will offer a refund or replacement. For full details of the Abpromise, please visit <https://www.abcam.cn/abpromise> or contact our technical team.

Terms and conditions

- Guarantee only valid for products bought direct from Abcam or one of our authorized distributors