

# Anti-Glypican 4 antibody ab118911

★★★★★ [3 Abreviews](#) [3 图像](#)

### 概述

产品名称	Anti-Glypican 4抗体
描述	兔多克隆抗体to Glypican 4
宿主	Rabbit
经测试应用	适用于: IHC-P
种属反应性	与反应: Human
免疫原	Synthetic peptide conjugated to KLH, corresponding to the C-terminal domain of Human Glypican 4.
阳性对照	Human Liver and Human Pancreas tissues.
常规说明	<p>The Life Science industry has been in the grips of a reproducibility crisis for a number of years. Abcam is leading the way in addressing this with our range of recombinant monoclonal antibodies and knockout edited cell lines for gold-standard validation. Please check that this product meets your needs before purchasing.</p> <p>If you have any questions, special requirements or concerns, please send us an inquiry and/or contact our Support team ahead of purchase. Recommended alternatives for this product can be found below, along with publications, customer reviews and Q&amp;As</p>

### 性能

形式	Liquid
存放说明	Shipped at 4°C. Upon delivery aliquot and store at -20°C. Avoid freeze / thaw cycles.
存储溶液	<p>pH: 7.4</p> <p>Preservative: 0.1% Sodium azide</p> <p>Constituent: 99% PBS</p>
纯度	Protein A purified
克隆	多克隆
同种型	IgG

### 应用

The Abpromise guarantee

**Abpromise™** 承诺保证使用ab118911于以下的经测试应用

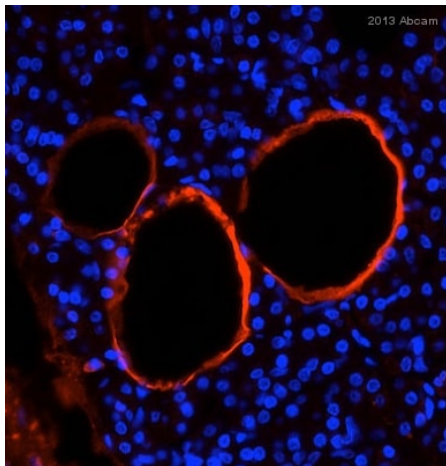
“应用说明”部分 下显示的仅为推荐的起始稀释度;实际最佳的稀释度/浓度应由使用者检定。

应用	Ab评论	说明
IHC-P	★★★★★ (3)	Use a concentration of 15 - 20 µg/ml.

## 靶标

功能	Cell surface proteoglycan that bears heparan sulfate. May be involved in the development of kidney tubules and of the central nervous system.
序列相似性	Belongs to the glypican family.
细胞定位	Cell membrane and Secreted > extracellular space.

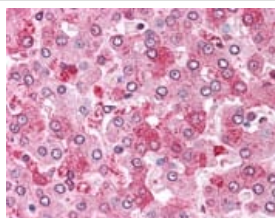
## 图片



ab118911 staining Glypican in Mouse pancreas tissue sections by Immunohistochemistry (IHC-P - paraformaldehyde-fixed, paraffin-embedded sections). Tissue was fixed with formaldehyde and blocked with 5% milk for 30 minutes at room temperature; antigen retrieval was by heat mediation in Tris pH 9.0. Samples were incubated with primary antibody (1/100 in PBS) for 16 hours at 4°C. An Alexa Fluor® 594-conjugated Goat anti-rabbit IgG polyclonal (1/500) was used as the secondary antibody. Blue - nuclei (DAPI)

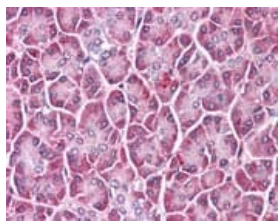
Immunohistochemistry (Formalin/PFA-fixed paraffin-embedded sections) - Anti-Glypican 4 antibody (ab118911)

This image is courtesy of an Abreview submitted by Steffen Rickelt



ab118911, at 20 µg/ml, staining Glypican 4 in Formalin-fixed, Paraffin-embedded Human Liver tissue by Immunohistochemistry.

Immunohistochemistry (Formalin/PFA-fixed paraffin-embedded sections) - Anti-Glypican 4 antibody (ab118911)



ab118911, at 20 µg/ml, staining Glypican 4 in Formalin-fixed, Paraffin-embedded Human Pancreas tissue by Immunohistochemistry.

Immunohistochemistry (Formalin/PFA-fixed paraffin-embedded sections) - Anti-Glypican 4 antibody (ab118911)

**Please note:** All products are "FOR RESEARCH USE ONLY. NOT FOR USE IN DIAGNOSTIC PROCEDURES"

### Our Abpromise to you: Quality guaranteed and expert technical support

---

- Replacement or refund for products not performing as stated on the datasheet
- Valid for 12 months from date of delivery
- Response to your inquiry within 24 hours
- We provide support in Chinese, English, French, German, Japanese and Spanish
- Extensive multi-media technical resources to help you
- We investigate all quality concerns to ensure our products perform to the highest standards

If the product does not perform as described on this datasheet, we will offer a refund or replacement. For full details of the Abpromise, please visit <https://www.abcam.cn/abpromise> or contact our technical team.

### Terms and conditions

---

- Guarantee only valid for products bought direct from Abcam or one of our authorized distributors