


Anti-Glycerol kinase antibody [EPR6567] ab126599

敲除验证 重组 RabMAb

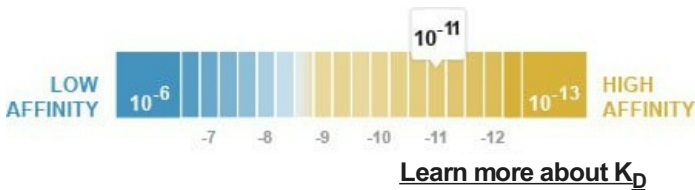
★★★★★ 1 Abreviews 8 References 6 图像

概述

产品名称	Anti-Glycerol kinase抗体[EPR6567]
描述	兔单克隆抗体[EPR6567] to Glycerol kinase
宿主	Rabbit
经测试应用	适用于: Flow Cyt (Intra), WB 不适用于: ICC/IF or IHC-P
种属反应性	与反应: Human 预测可用于: Mouse, Rat 
免疫原	Synthetic peptide within Human Glycerol kinase aa 450-550. The exact sequence is proprietary.
阳性对照	WB: Mouse adipose tissue lysate. Fetal liver, HEK-293T, Jurkat and HepG2 whole cell lysate (ab7900). Flow Cyt (intra): Permeabilized HepG2 cells.
常规说明	<p>This product is a recombinant monoclonal antibody, which offers several advantages including:</p> <ul style="list-style-type: none">- High batch-to-batch consistency and reproducibility- Improved sensitivity and specificity- Long-term security of supply- Animal-free production <p>For more information see here.</p> <p>Our RabMAb[®] technology is a patented hybridoma-based technology for making rabbit monoclonal antibodies. For details on our patents, please refer to RabMAb[®] patents.</p>

性能

形式	Liquid
存放说明	Shipped at 4°C. Store at -20°C. Stable for 12 months at -20°C.
解离常数 (K _D)	K _D = 4.80 x 10 ⁻¹¹ M



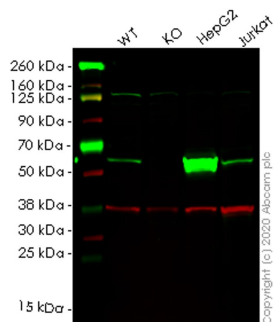
存储溶液	pH: 7.20 Preservative: 0.01% Sodium azide Constituents: 9% PBS, 40% Glycerol (glycerin, glycerine), 0.05% BSA, 50% Tissue culture supernatant
纯度	Protein A purified
克隆	单克隆
克隆编号	EPR6567
同种型	IgG

The Abpromise guarantee **Abpromise™承诺保证使用ab126599于以下的经测试应用**

应用	Ab评论	说明
Flow Cyt (Intra)		1/100 - 1/500. ab172730 - Rabbit monoclonal IgG, is suitable for use as an isotype control with this antibody.
WB	★★★★★ (1)	1/1000 - 1/10000. Detects a band of approximately 55 kDa (predicted molecular weight: 61 kDa).

靶标

功能	Key enzyme in the regulation of glycerol uptake and metabolism.
组织特异性	Highly expressed in the liver, kidney and testis. Isoform 2 and isoform 3 are expressed specifically in testis and fetal liver, but not in the adult liver.
通路	Polyol metabolism; glycerol degradation via glycerol kinase pathway; sn-glycerol 3-phosphate from glycerol: step 1/1.
疾病相关	Defects in GK are the cause of GK deficiency (GKD) [MIM:307030]. This disease can be either symptomatic with episodic metabolic and CNS decompensation or asymptomatic with hyperglycerolemia and hyperglyceroluria only.
序列相似性	Belongs to the FGGY kinase family.
细胞定位	Mitochondrion outer membrane. Cytoplasm. In sperm and fetal tissues, the majority of the enzyme is bound to mitochondria, but in adult tissues, such as liver found in the cytoplasm.



Western blot - Anti-Glycerol kinase antibody
[EPR6567] (ab126599)

All lanes : Anti-Glycerol kinase antibody [EPR6567] (ab126599) at 1/500 dilution

Lane 1 : Wild-type HEK-293T (Human epithelial cell line from embryonic kidney transformed with large T antigen) whole cell lysate

Lane 2 : GK knockout HEK-293T (Human epithelial cell line from embryonic kidney transformed with large T antigen) whole cell lysate

Lane 3 : HepG2 (Human liver hepatocellular carcinoma cell line) whole cell lysate

Lane 4 : Jurkat (Human T cell leukemia cell line from peripheral blood) whole cell lysate

Lysates/proteins at 20 µg per lane.

Secondary

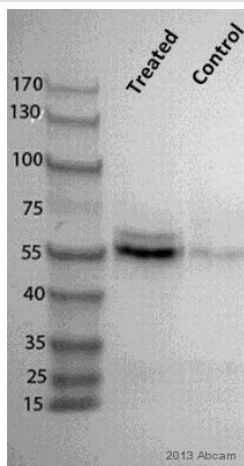
All lanes : Goat anti-Rabbit IgG H&L (IRDye® 800CW) preadsorbed ([ab216773](#)) at 1/10000 dilution

Predicted band size: 61 kDa

Observed band size: 61 kDa

Lanes 1-4: Merged signal (red and green). Green - ab126599 observed at 61 kDa. Red - loading control [ab8245](#) observed at 36 kDa.

ab126599 Anti-Glycerol kinase antibody [EPR6567] was shown to specifically react with Glycerol kinase in wild-type HEK-293T cells. Loss of signal was observed when knockout cell line [ab267328](#) (knockout cell lysate [ab257966](#)) was used. Wild-type and Glycerol kinase knockout samples were subjected to SDS-PAGE. ab126599 and Anti-GAPDH antibody [6C5] - Loading Control ([ab8245](#)) were incubated overnight at 4°C at 1 in 500 dilution and 1 in 20000 dilution respectively. Blots were developed with Goat anti-Rabbit IgG H&L (IRDye® 800CW) preadsorbed ([ab216773](#)) and Goat anti-Mouse IgG H&L (IRDye® 680RD) preadsorbed ([ab216776](#)) secondary antibodies at 1 in 20000 dilution for 1 hour at room temperature before imaging.



Western blot - Anti-Glycerol kinase antibody
[EPR6567] (ab126599)

This image is courtesy of an anonymous Abreview

All lanes : Anti-Glycerol kinase antibody [EPR6567] (ab126599) at 1/1000 dilution

All lanes : Mouse adipose tissue lysate

Lysates/proteins at 25 µg per lane.

Secondary

All lanes : HRP-conjugated Donkey anti-rabbit polyclonal at 1/5000 dilution

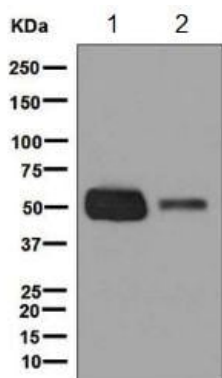
Developed using the ECL technique.

Performed under reducing conditions.

Predicted band size: 61 kDa

Observed band size: 55 kDa

Exposure time: 5 minutes



Western blot - Anti-Glycerol kinase antibody
[EPR6567] (ab126599)

All lanes : Anti-Glycerol kinase antibody [EPR6567] (ab126599) at 1/1000 dilution

Lane 1 : Fetal liver tissue lysate

Lane 2 : HepG2 cell lysate

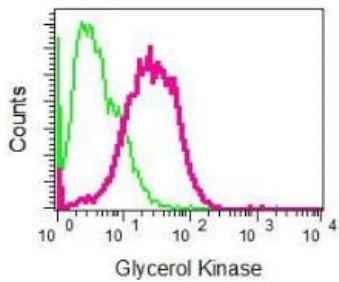
Lysates/proteins at 10 µg per lane.

Secondary

All lanes : Goat anti-rabbit HRP at 1/2000 dilution

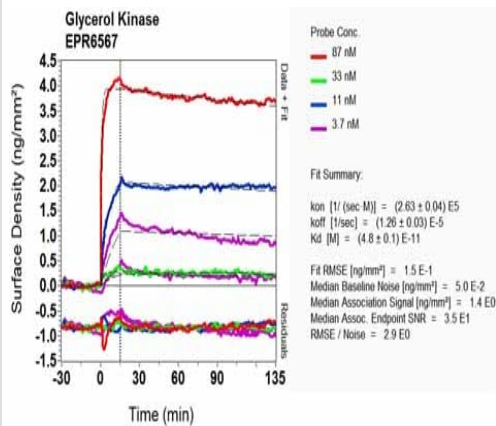
Predicted band size: 61 kDa

Observed band size: 55 kDa



Flow Cytometry (Intracellular) - Anti-Glycerol kinase antibody [EPR6567] (ab126599)

ab126599, at 1/100 dilution, staining Glycerol kinase in permeabilized HepG2 cells by ImmunoFluorescence (red). A rabbit IgG is used as a negative control (green).



BI-RD Scanning - Anti-Glycerol kinase antibody [EPR6567] (ab126599)

Equilibrium dissociation constant (K_D)

Learn more about K_D

[Click here to learn more about \$K_D\$](#)

Why choose a recombinant antibody?



Research with confidence
Consistent and reproducible results



Long-term and scalable supply
Recombinant technology



Success from the first experiment
Confirmed specificity



Ethical standards compliant
Animal-free production

Anti-Glycerol kinase antibody [EPR6567]
(ab126599)

Please note: All products are "FOR RESEARCH USE ONLY. NOT FOR USE IN DIAGNOSTIC PROCEDURES"

Our Abpromise to you: Quality guaranteed and expert technical support

- Replacement or refund for products not performing as stated on the datasheet
- Valid for 12 months from date of delivery
- Response to your inquiry within 24 hours
- We provide support in Chinese, English, French, German, Japanese and Spanish
- Extensive multi-media technical resources to help you
- We investigate all quality concerns to ensure our products perform to the highest standards

If the product does not perform as described on this datasheet, we will offer a refund or replacement. For full details of the Abpromise, please visit <https://www.abcam.cn/abpromise> or contact our technical team.

Terms and conditions

- Guarantee only valid for products bought direct from Abcam or one of our authorized distributors