

Anti-Glutathione Synthetase antibody [EPR6562] ab124811

敲除验证 重组 RabMAb

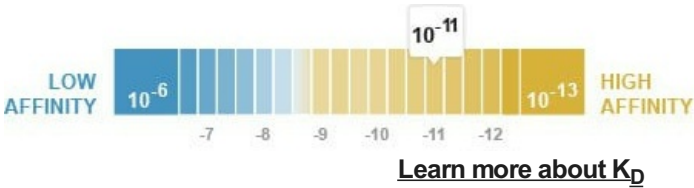
★★★★☆ 6 Abreviews 6 References 5 图像

概述

产品名称	Anti-Glutathione Synthetase抗体[EPR6562]
描述	兔单克隆抗体[EPR6562] to Glutathione Synthetase
宿主	Rabbit
经测试应用	适用于: WB, IHC-P
种属反应性	与反应: Human
免疫原	Synthetic peptide within Human Glutathione Synthetase. The exact sequence is proprietary.
常规说明	<p>This product is a recombinant monoclonal antibody, which offers several advantages including:</p> <ul style="list-style-type: none"><li>- High batch-to-batch consistency and reproducibility</li><li>- Improved sensitivity and specificity</li><li>- Long-term security of supply</li><li>- Animal-free production</li></ul> <p>For more information <a href="#">see here</a>.</p> <p>Our RabMAb® technology is a patented hybridoma-based technology for making rabbit monoclonal antibodies. For details on our patents, please refer to <a href="#">RabMAb® patents</a>.</p>

性能

形式	Liquid
存放说明	Shipped at 4°C. Store at -20°C. Stable for 12 months at -20°C.
解离常数 (K <sub>D</sub> )	K <sub>D</sub> = 5.70 x 10 <sup>-11</sup> M



存储溶液	<p>pH: 7.20</p> <p>Preservative: 0.05% Sodium azide</p> <p>Constituents: 40% Glycerol (glycerin, glycerine), 9.85% Tris glycine, 50% Tissue culture supernatant</p>
纯度	Protein A purified

纯化说明	ab124811 is not purified, it is provided in storage buffer.
克隆	单克隆
克隆编号	EPR6562
同种型	IgG

应用

The Abpromise guarantee      **Abpromise™**承诺保证使用ab124811于以下的经测试应用

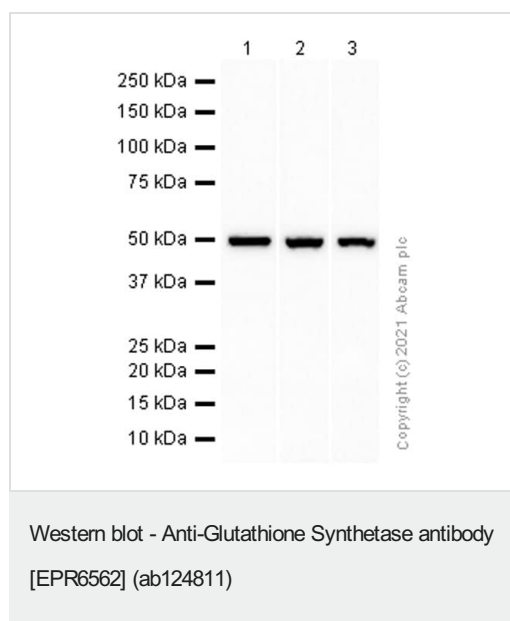
“应用说明”部分 下显示的仅为推荐的起始稀释度;实际最佳的稀释度/浓度应由使用者检定。

应用	Ab评论	说明
WB	★★★★☆ (3)	1/10000 - 1/50000. Detects a band of approximately 52 kDa (predicted molecular weight: 52 kDa).
IHC-P	★★★★★ (1)	1/8000. Perform heat mediated antigen retrieval before commencing with IHC staining protocol. (Heat to 98&degC, allow to cool for 10-20 minutes)  For unpurified use at dilution between 1/50 and 1/100

靶标

通路	Sulfur metabolism; glutathione biosynthesis; glutathione from L-cysteine and L-glutamate: step 2/2.
疾病相关	Defects in GSS are the cause of glutathione synthetase deficiency (GSS deficiency) [MIM:266130]; also known as 5-oxoprolinuria or pyroglutamic aciduria. It is a severe form characterized by an increased rate of hemolysis and defective function of the central nervous system.  Defects in GSS are the cause of glutathione synthetase deficiency of erythrocytes (GLUSYNDE) [MIM:231900]. Glutathione synthetase deficiency of erythrocytes is a mild form causing hemolytic anemia.
序列相似性	Belongs to the eukaryotic GSH synthase family.

图片



**All lanes :** Anti-Glutathione Synthetase antibody [EPR6562] (ab124811) at 1/10000 dilution (Purified)

**Lane 1 :** HeLa (Human cervix adenocarcinoma epithelial cell) whole cell lysate

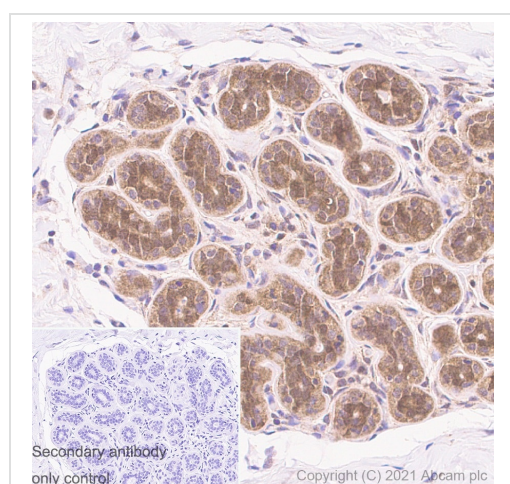
**Lane 2 :** 293T (Human embryonic kidney epithelial cell) whole cell lysate

**Lane 3 :** HT-1080 (Human fibrosarcoma epithelial cell) whole cell lysate

#### Secondary

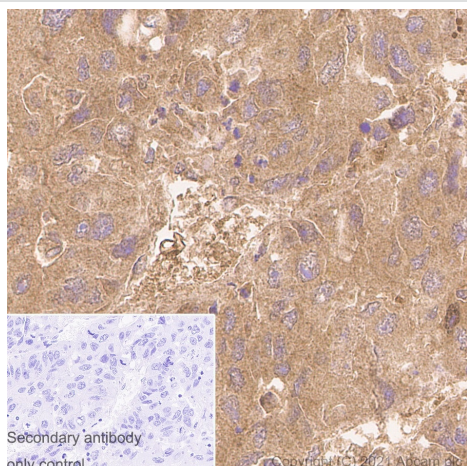
**All lanes :** Goat Anti-Rabbit IgG H&L (HRP) ([ab97051](#)) at 1/20000 dilution

**Predicted band size:** 52 kDa



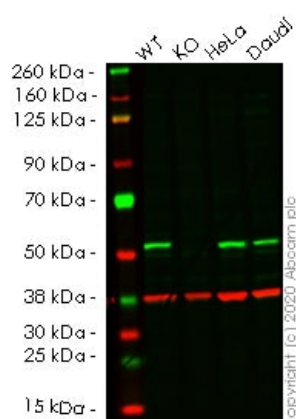
Immunohistochemistry (Formalin/PFA-fixed paraffin-embedded sections) analysis of human breast tissue sections labeling Glutathione Synthetase with Purified ab124811 at 1:8000 (0.11 µg/ml). Heat mediated antigen retrieval was performed using Heat mediated antigen retrieval using Bond™ Epitope Retrieval Solution 2 (pH 9.0) . Tissue was counterstained with Hematoxylin. Rabbit specific IHC polymer detection kit HRP/DAB ([ab209101](#)) secondary antibody was used at 1:0 dilution. PBS instead of the primary antibody was used as the negative control.

Immunohistochemistry (Formalin/PFA-fixed paraffin-embedded sections) - Anti-Glutathione Synthetase antibody [EPR6562] (ab124811)



Immunohistochemistry (Formalin/PFA-fixed paraffin-embedded sections) - Anti-Glutathione Synthetase antibody [EPR6562] (ab124811)

Immunohistochemistry (Formalin/PFA-fixed paraffin-embedded sections) analysis of human hepatocellular carcinoma tissue sections labeling Glutathione Synthetase with Purified ab124811 at 1:8000 (0.11 µg/ml). Heat mediated antigen retrieval was performed using Heat mediated antigen retrieval using Bond™ Epitope Retrieval Solution 2 (pH 9.0) . Tissue was counterstained with Hematoxylin. Rabbit specific IHC polymer detection kit HRP/DAB ([ab209101](#)) secondary antibody was used at 1:0 dilution. PBS instead of the primary antibody was used as the negative control.



Western blot - Anti-Glutathione Synthetase antibody [EPR6562] (ab124811)

**All lanes :** Anti-Glutathione Synthetase antibody [EPR6562] (ab124811) at 1/10000 dilution

**Lane 1 :** Wild-type HEK-293T cell lysate

**Lane 2 :** GSS knockout HEK-293T cell lysate

**Lane 3 :** HeLa cell lysate

**Lane 4 :** Daudi cell lysate

Lysates/proteins at 20 µg per lane.

Performed under reducing conditions.

**Predicted band size:** 52 kDa

**Observed band size:** 52 kDa

**Lanes 1- 4:** Merged signal (red and green). Green - ab124811 observed at 52 kDa. Red - Anti-GAPDH antibody [6C5] - Loading Control ([ab8245](#)) observed at 37 kDa.

ab124811 was shown to react with GSS in wild-type HEK-293T cells in western blot. Loss of signal was observed when knockout cell line [ab266342](#) (knockout cell lysate [ab257460](#)) was used. Wild-type HEK-293T and GSS knockout HEK-293T cell lysates were subjected to SDS-PAGE. Membrane was blocked for 1 hour at room temperature in 0.1% TBST with 3% non-fat dried milk.

ab124811 and Anti-GAPDH antibody [6C5] - Loading Control (**ab8245**) overnight at 4°C at a 1 in 10000 dilution and a 1 in 20000 dilution respectively. Blots were developed with Goat anti-Rabbit IgG H&L (IRDye®800CW) preadsorbed (**ab216773**) and Goat anti-Mouse IgG H&L (IRDye®680RD) preadsorbed (**ab216776**) secondary antibodies at 1 in 20000 dilution for 1 hour at room temperature before imaging.

Why choose a recombinant antibody?

 <p><b>Research with confidence</b> Consistent and reproducible results</p>	 <p><b>Long-term and scalable supply</b> Recombinant technology</p>
 <p><b>Success from the first experiment</b> Confirmed specificity</p>	 <p><b>Ethical standards compliant</b> Animal-free production</p>

Anti-Glutathione Synthetase antibody [EPR6562] (ab124811)

**Please note:** All products are "FOR RESEARCH USE ONLY. NOT FOR USE IN DIAGNOSTIC PROCEDURES"

### Our Abpromise to you: Quality guaranteed and expert technical support

- Replacement or refund for products not performing as stated on the datasheet
- Valid for 12 months from date of delivery
- Response to your inquiry within 24 hours
- We provide support in Chinese, English, French, German, Japanese and Spanish
- Extensive multi-media technical resources to help you
- We investigate all quality concerns to ensure our products perform to the highest standards

If the product does not perform as described on this datasheet, we will offer a refund or replacement. For full details of the Abpromise, please visit <https://www.abcam.cn/abpromise> or contact our technical team.

### Terms and conditions

- Guarantee only valid for products bought direct from Abcam or one of our authorized distributors