




Anti-Glutamate Receptor 1 (AMPA subtype) antibody [N355/1] - N-terminal ab174785

★★★★★ [1 Abreviews](#) [7 References](#) [2 图像](#)

概述

产品名称	Anti-Glutamate Receptor 1 (AMPA subtype)抗体[N355/1] - N-terminal
描述	小鼠单克隆抗体[N355/1] to Glutamate Receptor 1 (AMPA subtype) - N-terminal
宿主	Mouse
特异性	Does not cross- react with GluR2.
经测试应用	适用于: ICC/IF, WB
种属反应性	与反应: Rat, Human 预测可用于: Cynomolgus monkey 
免疫原	Recombinant fragment within Rat Glutamate Receptor 1 (AMPA subtype) aa 1-400 (N terminal). The exact immunogen sequence used to generate this antibody is proprietary information. If additional detail on the immunogen is needed to determine the suitability of the antibody for your needs, please contact our Scientific Support team to discuss your requirements. within extracellular domain Database link: P19490 <div>  Run BLAST with  Run BLAST with </div>
阳性对照	WB: Rat brain membrane lysate
常规说明	<p>The clone number has been updated from S355-1 to N355/1, both clone numbers name the same antibody clone.</p> <p>The Life Science industry has been in the grips of a reproducibility crisis for a number of years. Abcam is leading the way in addressing this with our range of recombinant monoclonal antibodies and knockout edited cell lines for gold-standard validation. Please check that this product meets your needs before purchasing.</p> <p>If you have any questions, special requirements or concerns, please send us an inquiry and/or contact our Support team ahead of purchase. Recommended alternatives for this product can be found below, along with publications, customer reviews and Q&As</p>

性能

形式	Liquid
存放说明	Shipped at 4°C. Store at +4°C short term (1-2 weeks). Upon delivery aliquot. Store at -20°C long term. Avoid freeze / thaw cycle.

存储溶液	Preservative: 0.09% Sodium azide Constituents: 49% PBS, 50% Glycerol (glycerin, glycerine)
纯度	Protein G purified
克隆	单克隆
克隆编号	N355/1
同种型	IgG1

应用

The Abpromise guarantee

Abpromise™承诺保证使用ab174785于以下的经测试应用

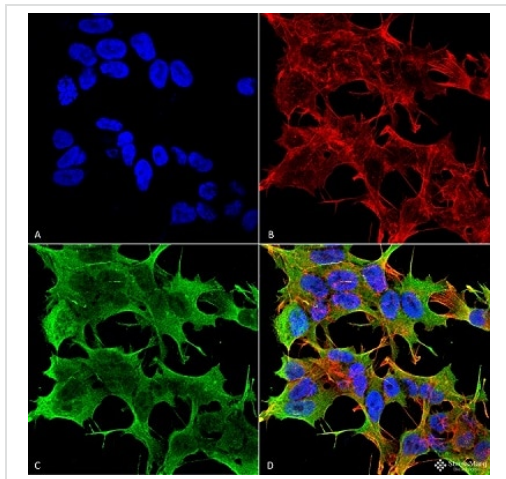
“应用说明”部分 下显示的仅为推荐的起始稀释度;实际最佳的稀释度/浓度应由使用者检定。

应用	Ab评论	说明
ICC/IF		Use at an assay dependent concentration.
WB	★★★★★ (1)	1/1000. Predicted molecular weight: 102 kDa. ab174785 detects Glutamate Receptor 1 (AMPA subtype) in 20µg of Mouse brain membrane lysate using goat anti-mouse HRP conjugayed antibody as the secondary antibody.

靶标

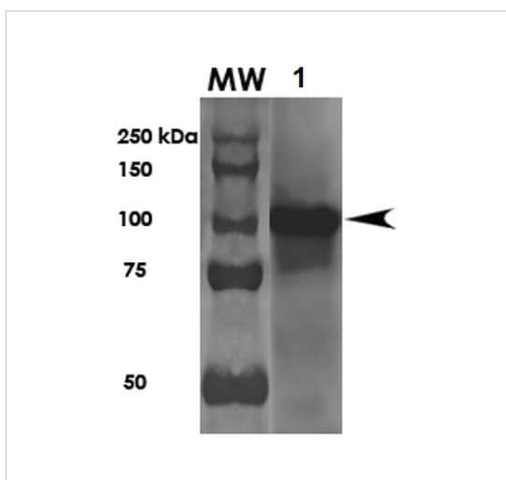
功能	Ionotropic glutamate receptor. L-glutamate acts as an excitatory neurotransmitter at many synapses in the central nervous system. Binding of the excitatory neurotransmitter L-glutamate induces a conformation change, leading to the opening of the cation channel, and thereby converts the chemical signal to an electrical impulse. The receptor then desensitizes rapidly and enters a transient inactive state, characterized by the presence of bound agonist.
组织特异性	Widely expressed in brain.
序列相似性	Belongs to the glutamate-gated ion channel (TC 1.A.10.1) family. GRIA1 subfamily.
翻译后修饰	Palmitoylated. Depalmitoylated upon glutamate stimulation. Cys-603 palmitoylation leads to Golgi retention and decreased cell surface expression. In contrast, Cys-829 palmitoylation does not affect cell surface expression but regulates stimulation-dependent endocytosis.
细胞定位	Cell membrane. Endoplasmic reticulum membrane. Cell junction > synapse > postsynaptic cell membrane. Interaction with CACNG2 promotes cell surface expression.

图片



Immunocytochemistry/Immunofluorescence analysis using ab174785 at 1/100 in Neuroblastoma cell line (SK-N-BE). Fixation: 4% Formaldehyde for 15 min at RT. Primary Antibody incubation for 60 min at RT. Secondary Antibody: Goat Anti-Mouse ATTO 488 at 1/100 for 60 min at RT. Counterstain: Phalloidin Texas Red F-Actin stain 1/1000 for 60 min at RT; DAPI (blue) nuclear stain at 1/5000 for 5min RT. Magnification: 60X. (A) DAPI (blue) nuclear stain. (B) Phalloidin Texas Red F-Actin stain. (C) ab174785 (D) Composite.

Immunocytochemistry/ Immunofluorescence - Anti-Glutamate Receptor 1 (AMPA subtype) antibody [N355/1] - N-terminal (ab174785)



Anti-Glutamate Receptor 1 (AMPA subtype) antibody [N355/1] - N-terminal (ab174785) at 1/2000 dilution + Rat Brain membrane lysate at 10 µg

Secondary

Goat Anti-Mouse HRP at 1/200 dilution

Predicted band size: 102 kDa

Western blot - Anti-Glutamate Receptor 1 (AMPA subtype) antibody [N355/1] - N-terminal (ab174785)

Please note: All products are "FOR RESEARCH USE ONLY. NOT FOR USE IN DIAGNOSTIC PROCEDURES"

Our Abpromise to you: Quality guaranteed and expert technical support

- Replacement or refund for products not performing as stated on the datasheet
- Valid for 12 months from date of delivery
- Response to your inquiry within 24 hours

- We provide support in Chinese, English, French, German, Japanese and Spanish
- Extensive multi-media technical resources to help you
- We investigate all quality concerns to ensure our products perform to the highest standards

If the product does not perform as described on this datasheet, we will offer a refund or replacement. For full details of the Abpromise, please visit <https://www.abcam.cn/abpromise> or contact our technical team.

Terms and conditions

- Guarantee only valid for products bought direct from Abcam or one of our authorized distributors