


# Anti-GluK1 antibody ab118891

[1 References](#) [2 图像](#)

### 概述

产品名称	Anti-GluK1抗体
描述	兔多克隆抗体to GluK1
宿主	Rabbit
经测试应用	适用于: WB, IHC-P
种属反应性	与反应: Rat, Human 预测可用于: Mouse 
免疫原	Synthetic peptide corresponding to Human GluK1.
常规说明	<p>The Life Science industry has been in the grips of a reproducibility crisis for a number of years. Abcam is leading the way in addressing this with our range of recombinant monoclonal antibodies and knockout edited cell lines for gold-standard validation. Please check that this product meets your needs before purchasing.</p> <p>If you have any questions, special requirements or concerns, please send us an inquiry and/or contact our Support team ahead of purchase. Recommended alternatives for this product can be found below, along with publications, customer reviews and Q&amp;As</p>

### 性能

形式	Liquid
存放说明	Shipped at 4°C. Store at +4°C short term (1-2 weeks). Upon delivery aliquot. Store at -20°C long term.
存储溶液	pH: 7.4 Preservative: 0.02% Sodium azide Constituent: 99% PBS
纯度	Protein A purified
克隆	多克隆
同种型	IgG

### 应用

The Abpromise guarantee

**Abpromise™** 承诺保证使用ab118891于以下的经测试应用

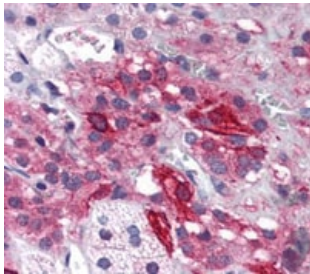
“应用说明”部分 下显示的仅为推荐的起始稀释度;实际最佳的稀释度/浓度应由使用者检定。

应用	Ab评论	说明
WB		Use a concentration of 0.5 - 1 µg/ml. Predicted molecular weight: 104 kDa.
IHC-P		Use a concentration of 5 µg/ml. Perform heat mediated antigen retrieval with citrate buffer pH 6 before commencing with IHC staining protocol.

## 靶标

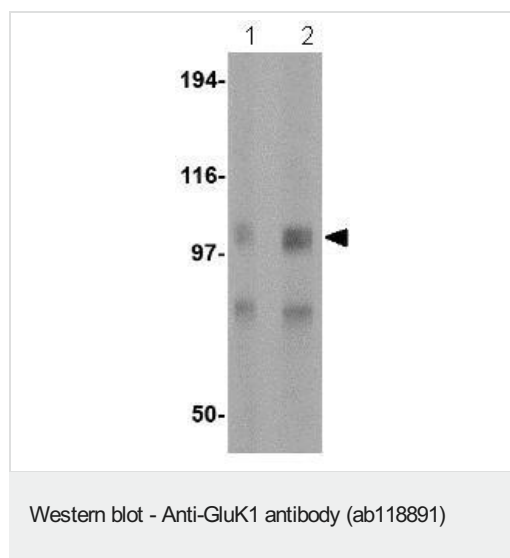
功能	Ionotropic glutamate receptor. L-glutamate acts as an excitatory neurotransmitter at many synapses in the central nervous system. Binding of the excitatory neurotransmitter L-glutamate induces a conformation change, leading to the opening of the cation channel, and thereby converts the chemical signal to an electrical impulse. The receptor then desensitizes rapidly and enters a transient inactive state, characterized by the presence of bound agonist. May be involved in the transmission of light information from the retina to the hypothalamus.
组织特异性	Most abundant in the cerebellum and the suprachiasmatic nuclei (SCN) of the hypothalamus.
序列相似性	Belongs to the glutamate-gated ion channel (TC 1.A.10.1) family. GRIK1 subfamily.
细胞定位	Cell membrane. Cell junction > synapse > postsynaptic cell membrane.

## 图片



ab118891 at 5 µg/ml staining GluK1 in Formalin-fixed, Paraffin-embedded Human Adrenal tissue by Immunohistochemistry followed by biotinylated secondary antibody, alkaline phosphatase-streptavidin and chromogen.

Immunohistochemistry (Formalin/PFA-fixed paraffin-embedded sections) - Anti-GluK1 antibody (ab118891)



**Lane 1 :** Anti-GluK1 antibody (ab118891) at 0.5 µg/ml

**Lane 2 :** Anti-GluK1 antibody (ab118891) at 1 µg/ml

**All lanes :** Rat Brain Tissue Lysate

**Predicted band size:** 104 kDa

**Please note:** All products are "FOR RESEARCH USE ONLY. NOT FOR USE IN DIAGNOSTIC PROCEDURES"

### Our Abpromise to you: Quality guaranteed and expert technical support

- Replacement or refund for products not performing as stated on the datasheet
- Valid for 12 months from date of delivery
- Response to your inquiry within 24 hours
- We provide support in Chinese, English, French, German, Japanese and Spanish
- Extensive multi-media technical resources to help you
- We investigate all quality concerns to ensure our products perform to the highest standards

If the product does not perform as described on this datasheet, we will offer a refund or replacement. For full details of the Abpromise, please visit <https://www.abcam.cn/abpromise> or contact our technical team.

### Terms and conditions

- Guarantee only valid for products bought direct from Abcam or one of our authorized distributors