


Anti-Glucose Transporter GLUT4 antibody [mAbcam48547] ab48547

★★★★★ [3 Abreviews](#) [7 References](#) [1 图像](#)

概述

产品名称	Anti-Glucose Transporter GLUT4抗体[mAbcam48547]
描述	小鼠单克隆抗体[mAbcam48547] to Glucose Transporter GLUT4
宿主	Mouse
经测试应用	适用于: WB 不适用于: Flow Cyt (Intra)
种属反应性	与反应: Mouse, Recombinant fragment 预测可用于: Rat, Sheep, Rabbit, Goat, Horse, Cow 
免疫原	Synthetic peptide corresponding to Human Glucose Transporter GLUT4 aa 450 to the C-terminus (C terminal) conjugated to keyhole limpet haemocyanin. (Peptide available as ab34088 , ab34089)
阳性对照	WB: ab48547 gave a positive signal against the partial recombinant GLUT4 protein which has an expected molecular weight of 30 kDa.
常规说明	<p>This antibody clone is manufactured by Abcam. If you require a custom buffer formulation or conjugation for your experiments, please contact orders@abcam.com.</p> <p>The Life Science industry has been in the grips of a reproducibility crisis for a number of years. Abcam is leading the way in addressing this with our range of recombinant monoclonal antibodies and knockout edited cell lines for gold-standard validation. Please check that this product meets your needs before purchasing.</p> <p>If you have any questions, special requirements or concerns, please send us an inquiry and/or contact our Support team ahead of purchase. Recommended alternatives for this product can be found below, along with publications, customer reviews and Q&As</p>

性能

形式	Liquid
存放说明	Shipped at 4°C. Store at +4°C short term (1-2 weeks). Upon delivery aliquot. Store at -20°C or -80°C. Avoid freeze / thaw cycle.
存储溶液	pH: 7.40 Preservative: 0.02% Sodium azide

纯度	Constituent: PBS
克隆	Protein G purified
克隆编号	单克隆
骨髓瘤	mAbcam48547
同种型	Sp2/0
轻链类型	IgG2b
	kappa

应用

The Abpromise guarantee **Abpromise™承诺保证使用ab48547于以下的经测试应用**

“应用说明”部分下显示的仅为推荐的起始稀释度;实际最佳的稀释度/浓度应由使用者检定。

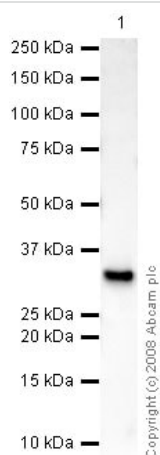
应用	Ab评论	说明
WB		Use a concentration of 1 - 5 µg/ml. Detects a band of approximately 30 kDa (predicted molecular weight: 54 kDa).

应用说明 Is unsuitable for Flow Cyt (Intra).

靶标

功能	Insulin-regulated facilitative glucose transporter.
组织特异性	Skeletal and cardiac muscles; brown and white fat.
疾病相关	Diabetes mellitus, non-insulin-dependent
序列相似性	Belongs to the major facilitator superfamily. Sugar transporter (TC 2.A.1.1) family. Glucose transporter subfamily.
翻译后修饰	Sumoylated.
细胞定位	Cell membrane. Endomembrane system. Cytoplasm, perinuclear region. Localizes primarily to the perinuclear region, undergoing continued recycling to the plasma membrane where it is rapidly reinternalized. The dileucine internalization motif is critical for intracellular sequestration.

图片



Western blot - Anti-Glucose Transporter GLUT4 antibody [mAbcam48547] (ab48547)

Anti-Glucose Transporter GLUT4 antibody [mAbcam48547] (ab48547) at 5 µg/ml + Partial tagged recombinant protein to GLUT4 at 0.1 µg

Secondary

Rabbit polyclonal to Mouse IgG - H&L (HRP) at 1/3000 dilution

Performed under reducing conditions.

Predicted band size: 54 kDa

Observed band size: 30 kDa

ab48547 gave a positive signal against the partial recombinant GLUT4 protein which has an expected molecular weight of 30 kDa.

Please note: All products are "FOR RESEARCH USE ONLY. NOT FOR USE IN DIAGNOSTIC PROCEDURES"

Our Abpromise to you: Quality guaranteed and expert technical support

- Replacement or refund for products not performing as stated on the datasheet
- Valid for 12 months from date of delivery
- Response to your inquiry within 24 hours
- We provide support in Chinese, English, French, German, Japanese and Spanish
- Extensive multi-media technical resources to help you
- We investigate all quality concerns to ensure our products perform to the highest standards

If the product does not perform as described on this datasheet, we will offer a refund or replacement. For full details of the Abpromise, please visit <https://www.abcam.cn/abpromise> or contact our technical team.

Terms and conditions

- Guarantee only valid for products bought direct from Abcam or one of our authorized distributors