

Anti-Glucose Transporter GLUT4 antibody ab216661

[3 References](#) [3 图像](#)

概述

产品名称	Anti-Glucose Transporter GLUT4抗体
描述	兔多克隆抗体to Glucose Transporter GLUT4
宿主	Rabbit
经测试应用	适用于: WB, IHC-P, Flow Cyt (Intra)
种属反应性	与反应: Mouse, Rat, Human
免疫原	Synthetic peptide aa 467-509 conjugated to keyhole limpet haemocyanin. The exact sequence is proprietary. Database link: P14672
阳性对照	WB: Mouse heart lysates. IHC-P: Rat kidney tissue. Flow Cyt (Intra): K562 cells.
常规说明	<p>The Life Science industry has been in the grips of a reproducibility crisis for a number of years. Abcam is leading the way in addressing this with our range of recombinant monoclonal antibodies and knockout edited cell lines for gold-standard validation. Please check that this product meets your needs before purchasing.</p> <p>If you have any questions, special requirements or concerns, please send us an inquiry and/or contact our Support team ahead of purchase. Recommended alternatives for this product can be found below, along with publications, customer reviews and Q&As</p>

性能

形式	Liquid
存放说明	Shipped at 4°C. Store at +4°C short term (1-2 weeks). Upon delivery aliquot. Store at -20°C long term. Avoid freeze / thaw cycle.
存储溶液	pH: 7.40 Preservative: 0.02% Proclin 300 Constituents: 50% Glycerol (glycerin, glycerine), 1% BSA, 48.98% TBS, 1X
纯度	Protein A purified
克隆	多克隆
同种型	IgG

应用

The Abpromise guarantee

Abpromise™ 承诺保证使用 ab216661 于以下的经测试应用

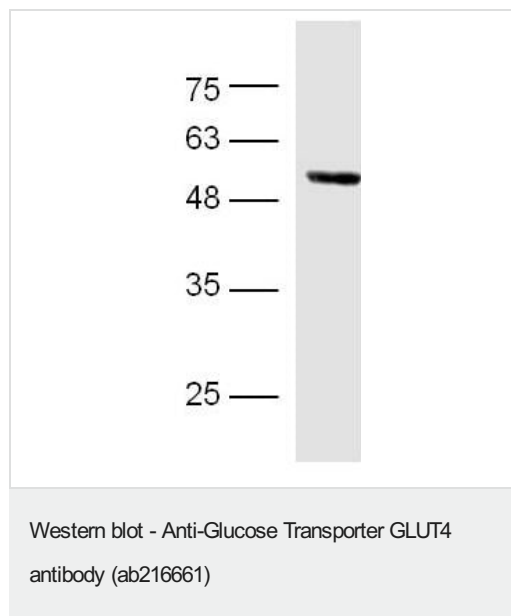
“应用说明”部分下显示的仅为推荐的起始稀释度；实际最佳的稀释度/浓度应由使用者检定。

应用	Ab评论	说明
WB		1/100 - 1/1000. Predicted molecular weight: 54 kDa.
IHC-P		1/100 - 1/500.
Flow Cyt (Intra)		1/100.

靶标

功能	Insulin-regulated facilitative glucose transporter.
组织特异性	Skeletal and cardiac muscles; brown and white fat.
疾病相关	Diabetes mellitus, non-insulin-dependent
序列相似性	Belongs to the major facilitator superfamily. Sugar transporter (TC 2.A.1.1) family. Glucose transporter subfamily.
翻译后修饰	Sumoylated.
细胞定位	Cell membrane. Endomembrane system. Cytoplasm, perinuclear region. Localizes primarily to the perinuclear region, undergoing continued recycling to the plasma membrane where it is rapidly reinternalized. The dileucine internalization motif is critical for intracellular sequestration.

图片

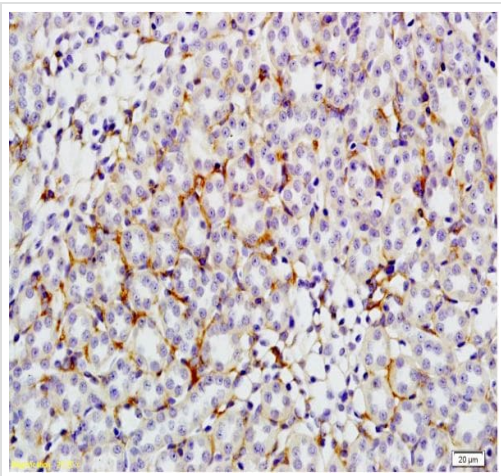


Anti-Glucose Transporter GLUT4 antibody (ab216661) at 1/300 dilution (overnight in 4°C) + mouse heart lysates

Secondary

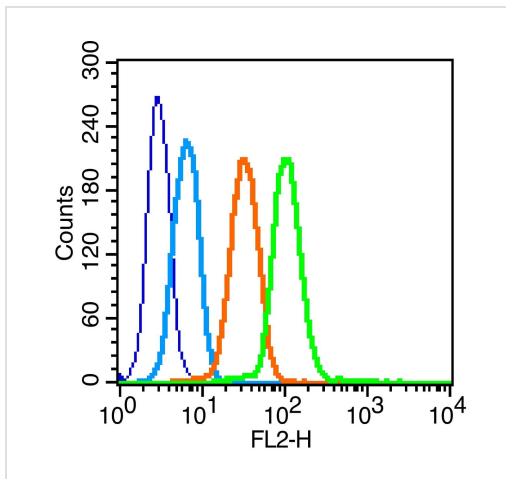
Goat anti-rabbit IgG (H+L), HRP conjugated (90min 37°C) at 1/5000 dilution

Predicted band size: 54 kDa



Immunohistochemical analysis of formalin-fixed, paraffin-embedded rat kidney tissue labeling Glucose Transporter GLUT4 with ab216661 at 1/200 dilution followed by conjugation to the secondary antibody and DAB staining.

Immunohistochemistry (Formalin/PFA-fixed paraffin-embedded sections) - Anti-Glucose Transporter GLUT4 antibody (ab216661)



Intracellular Flow Cytometry of K562 cells with [ab203387](#) at 1/100

Flow Cytometry (Intracellular) - Anti-Glucose Transporter GLUT4 antibody (ab216661)

Please note: All products are "FOR RESEARCH USE ONLY. NOT FOR USE IN DIAGNOSTIC PROCEDURES"

Our Abpromise to you: Quality guaranteed and expert technical support

- Replacement or refund for products not performing as stated on the datasheet
- Valid for 12 months from date of delivery
- Response to your inquiry within 24 hours
- We provide support in Chinese, English, French, German, Japanese and Spanish

- Extensive multi-media technical resources to help you
- We investigate all quality concerns to ensure our products perform to the highest standards

If the product does not perform as described on this datasheet, we will offer a refund or replacement. For full details of the Abpromise, please visit <https://www.abcam.cn/abpromise> or contact our technical team.

Terms and conditions

- Guarantee only valid for products bought direct from Abcam or one of our authorized distributors