

Anti-Glucose Transporter GLUT3 + GLUT14 antibody [EPR10508(N)] - N-terminal ab191071

重组 RabMAb

★★★★★ **6 Abreviews** **23 References** **5 图像**

概述

产品名称	Anti-Glucose Transporter GLUT3 + GLUT14抗体[EPR10508(N)] - N-terminal
描述	兔单克隆抗体[EPR10508(N)] to Glucose Transporter GLUT3 + GLUT14 - N-terminal
宿主	Rabbit
经测试应用	适用于: WB
种属反应性	与反应: Mouse, Rat, Human
免疫原	Synthetic peptide. This information is proprietary to Abcam and/or its suppliers.
阳性对照	WB: Mouse brain and Rat brain tissue lysates; SHSY-5Y, U87-MG, NIH3T3, HepG2, C6 and RAW264.7 cell lysates, GST-tagged Recombinant Human SLC2A3(GLUT3) protein (Full length), GST tagged Recombinant Human SLC2A14(GLUT14) protein (aa51-105)
常规说明	<p>This product is a recombinant monoclonal antibody, which offers several advantages including:</p> <ul style="list-style-type: none"> - High batch-to-batch consistency and reproducibility - Improved sensitivity and specificity - Long-term security of supply - Animal-free production <p>For more information see here.</p> <p>Our RabMAb[®] technology is a patented hybridoma-based technology for making rabbit monoclonal antibodies. For details on our patents, please refer to RabMAb[®] patents.</p>

性能

形式	Liquid
存放说明	Shipped at 4°C. Store at +4°C short term (1-2 weeks). Upon delivery aliquot. Store at -20°C long term. Avoid freeze / thaw cycle.
存储溶液	<p>pH: 7.2</p> <p>Preservative: 0.01% Sodium azide</p> <p>Constituents: 59% PBS, 40% Glycerol, 0.05% BSA</p>
纯度	Protein A purified
克隆	单克隆

克隆编号EPR10508(N)
同种型IgG

应用

The Abpromise guarantee **Abpromise™**承诺保证使用ab191071于以下的经测试应用

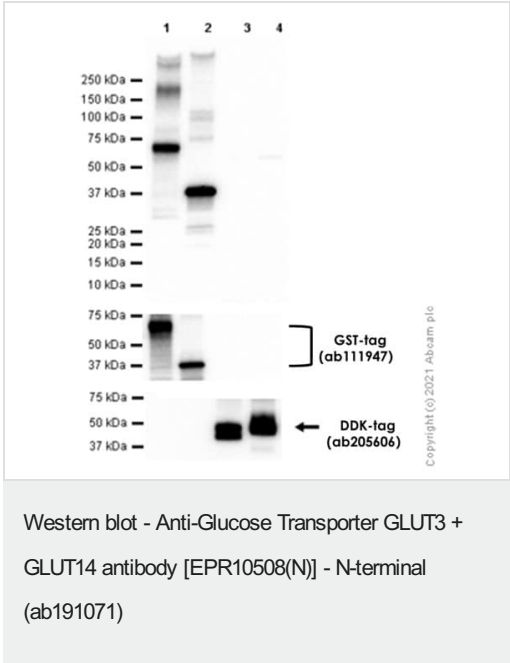
“应用说明”部分 下显示的仅为推荐的起始稀释度;实际最佳的稀释度/浓度应由使用者检定。

应用	Ab评论	说明
WB	★★★★★ (4)	1/1000 - 1/10000. Detects a band of approximately 54 kDa (predicted molecular weight: 54 kDa).

靶标

细胞定位Glucose Transporter GLUT3: Membrane. GLUT14: Membrane.

图片



All lanes : Anti-Glucose Transporter GLUT3 + GLUT14 antibody [EPR10508(N)] - N-terminal (ab191071) at 1/1000 dilution

Lane 1 : GST-tagged Recombinant Human SLC2A3(GLUT3) protein (Full length)

Lane 2 : GST tagged Recombinant Human SLC2A14(GLUT14) protein (aa51-105)

Lane 3 : MYC and DDK-tagged Recombinant Human SLC2A1(GLUT1) protein (Full length)

Lane 4 : MYC and DDK-tagged Recombinant Human SLC2A4(GLUT4) protein (Full length)

Secondary

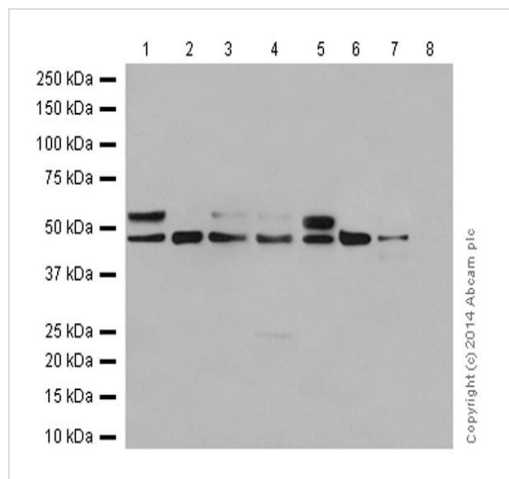
All lanes : Goat Anti-Rabbit IgG H&L (HRP) (**ab97051**) at 1/20000 dilution (Goat Anti-Rabbit IgG, (H+L), Peroxidase conjugated)

Predicted band size: 54 kDa

Observed band size: 38,70 kDa

Exposure time: 3 seconds

Blocking and dilution buffer: 5% NFDM/TBST.



Western blot - Anti-Glucose Transporter GLUT3 + GLUT14 antibody [EPR10508(N)] - N-terminal (ab191071)

All lanes : Anti-Glucose Transporter GLUT3 + GLUT14 antibody [EPR10508(N)] - N-terminal (ab191071) at 1/1000 dilution

Lane 1 : Mouse brain tissue lysate

Lane 2 : Mouse heart tissue lysate

Lane 3 : Mouse kidney tissue lysate

Lane 4 : Mouse spleen tissue lysate

Lane 5 : Rat brain tissue lysate

Lane 6 : Rat heart tissue lysate

Lane 7 : Rat kidney tissue lysate

Lane 8 : Rat spleen tissue lysate

Lysates/proteins at 20 µg per lane.

Secondary

All lanes : Goat Anti-Rabbit IgG, (H+L), Peroxidase conjugated at 1/1000 dilution

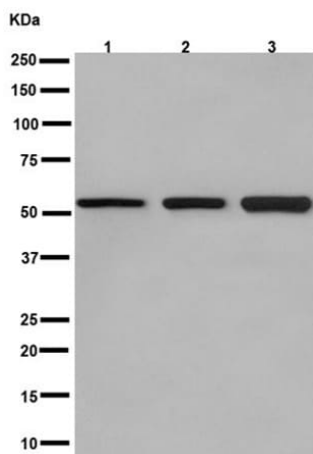
Predicted band size: 54 kDa

Observed band size: 54 kDa

Exposure time: 15 seconds

Blocking/Diluting buffer and concentration: 5% NFDM/TBST

We are unsure as to the identity of the band below 54kDa. This is not the target band.



Western blot - Anti-Glucose Transporter GLUT3 + GLUT14 antibody [EPR10508(N)] - N-terminal (ab191071)

All lanes : Anti-Glucose Transporter GLUT3 + GLUT14 antibody [EPR10508(N)] - N-terminal (ab191071) at 1/10000 dilution

Lane 1 : SH-SH5Y cell lysate

Lane 2 : U87-MG cell lysate

Lane 3 : HepG2 cell lysate

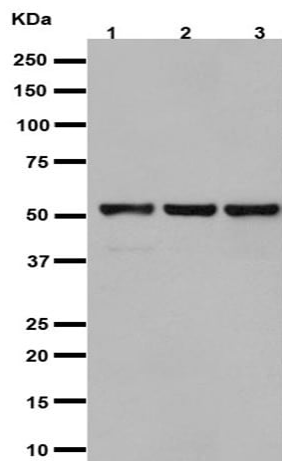
Lysates/proteins at 20 µg per lane.

Secondary

All lanes : Goat Anti-Rabbit IgG, (H+L), Peroxidase conjugated at 1/1000 dilution

Predicted band size: 54 kDa

Observed band size: 54 kDa



Western blot - Anti-Glucose Transporter GLUT3 + GLUT14 antibody [EPR10508(N)] - N-terminal (ab191071)

All lanes : Anti-Glucose Transporter GLUT3 + GLUT14 antibody [EPR10508(N)] - N-terminal (ab191071) at 1/1000 dilution

Lane 1 : C6 cell lysate

Lane 2 : RAW264.7 cell lysate

Lane 3 : NIH 3T3 cell lysate

Lysates/proteins at 10 µg per lane.

Secondary

All lanes : Goat Anti-Rabbit IgG, (H+L), Peroxidase conjugated at 1/1000 dilution

Predicted band size: 54 kDa

Observed band size: 54 kDa

Why choose a recombinant antibody?



Research with confidence
Consistent and reproducible results



Long-term and scalable supply
Recombinant technology



Success from the first experiment
Confirmed specificity



Ethical standards compliant
Animal-free production

Anti-Glucose Transporter GLUT3 + GLUT14 antibody
[EPR10508(N)] - N-terminal (ab191071)

Please note: All products are "FOR RESEARCH USE ONLY. NOT FOR USE IN DIAGNOSTIC PROCEDURES"

Our Abpromise to you: Quality guaranteed and expert technical support

- Replacement or refund for products not performing as stated on the datasheet
- Valid for 12 months from date of delivery
- Response to your inquiry within 24 hours
- We provide support in Chinese, English, French, German, Japanese and Spanish
- Extensive multi-media technical resources to help you
- We investigate all quality concerns to ensure our products perform to the highest standards

If the product does not perform as described on this datasheet, we will offer a refund or replacement. For full details of the Abpromise, please visit <https://www.abcam.cn/abpromise> or contact our technical team.

Terms and conditions

- Guarantee only valid for products bought direct from Abcam or one of our authorized distributors