


Anti-Glucocorticoid Receptor antibody ab227524

6 图像

概述

产品名称	Anti-Glucocorticoid Receptor抗体
描述	兔多克隆抗体to Glucocorticoid Receptor
宿主	Rabbit
经测试应用	适用于: WB, IP, IHC-P, ICC/IF
种属反应性	与反应: Human 预测可用于: Sheep, Cow, Cat 
免疫原	Recombinant fragment within Human Glucocorticoid Receptor (internal sequence). The exact sequence is proprietary. Database link: P04150
阳性对照	WB: HeLa whole cell extract; Jurkat and Raji whole cell lysates. IP: HeLa whole cell extract. IHC-P: Human colon carcinoma tissue. ICC/IF: A431 cells.
常规说明	<p>The Life Science industry has been in the grips of a reproducibility crisis for a number of years. Abcam is leading the way in addressing this with our range of recombinant monoclonal antibodies and knockout edited cell lines for gold-standard validation. Please check that this product meets your needs before purchasing.</p> <p>If you have any questions, special requirements or concerns, please send us an inquiry and/or contact our Support team ahead of purchase. Recommended alternatives for this product can be found below, along with publications, customer reviews and Q&As</p>

性能

形式	Liquid
存放说明	Shipped at 4°C. Store at +4°C short term (1-2 weeks). Upon delivery aliquot. Store at -20°C long term. Avoid freeze / thaw cycle.
存储溶液	pH: 7.00 Preservative: 0.01% Thimerosal (merthiolate) Constituents: 1.21% Tris, 0.75% Glycine, 20% Glycerol (glycerin, glycerine)
纯度	Immunogen affinity purified
克隆	多克隆
同种型	IgG

应用

The Abpromise guarantee **Abpromise™**承诺保证使用ab227524于以下的经测试应用

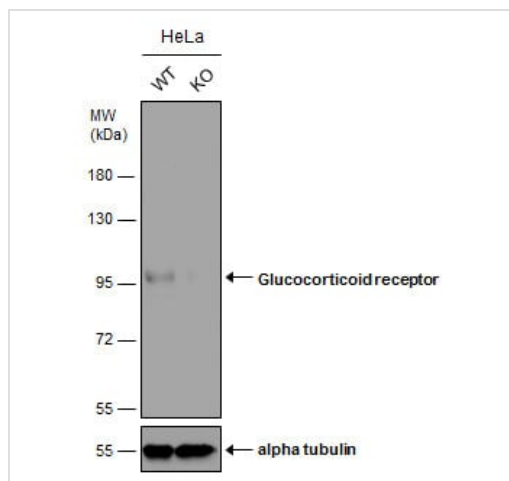
“应用说明”部分 下显示的仅为推荐的起始稀释度;实际最佳的稀释度/浓度应由使用者检定。

应用	Ab评论	说明
WB		1/500 - 1/3000. Predicted molecular weight: 86 kDa.
IP		1/500 - 1/1000.
IHC-P		1/100 - 1/1000.
ICC/IF		1/100 - 1/1000.

靶标

功能	Receptor for glucocorticoids (GC). Has a dual mode of action: as a transcription factor that binds to glucocorticoid response elements (GRE) and as a modulator of other transcription factors. Affects inflammatory responses, cellular proliferation and differentiation in target tissues. Could act as a coactivator for STAT5-dependent transcription upon growth hormone (GH) stimulation and could reveal an essential role of hepatic GR in the control of body growth. Involved in chromatin remodeling. Plays a significant role in transactivation. Involved in nuclear translocation.
组织特异性	Widely expressed. In the heart, detected in left and right atria, left and right ventricles, aorta, apex, intraventricular septum, and atrioventricular node as well as whole adult and fetal heart.
疾病相关	Defects in NR3C1 are a cause of glucocorticoid resistance (GCRES) [MIM:138040]; also known as cortisol resistance. It is a hypertensive, hyperandrogenic disorder characterized by increased serum cortisol concentrations. Inheritance is autosomal dominant.
序列相似性	Belongs to the nuclear hormone receptor family. NR3 subfamily. Contains 1 nuclear receptor DNA-binding domain.
结构域	Composed of three domains: a modulating N-terminal domain, a DNA-binding domain and a C-terminal ligand-binding domain.
翻译后修饰	Increased proteasome-mediated degradation in response to glucocorticoids. Phosphorylated in the absence of hormone; becomes hyperphosphorylated in the presence of glucocorticoid. The Ser-203-phosphorylated form is mainly cytoplasmic, and the Ser-211-phosphorylated form is nuclear. Transcriptional activity correlates with the amount of phosphorylation at Ser-211. Sumoylated; this reduces transcription transactivation. Ubiquitinated; restricts glucocorticoid-mediated transcriptional signaling.
细胞定位	Cytoplasm. Nucleus. Cytoplasmic in the absence of ligand, nuclear after ligand-binding and Nucleus. Localized largely in the nucleus.

图片



Western blot - Anti-Glucocorticoid Receptor antibody (ab227524)

All lanes : Anti-Glucocorticoid Receptor antibody (ab227524) at 1/1000 dilution

Lane 1 : WT HeLa cell extract

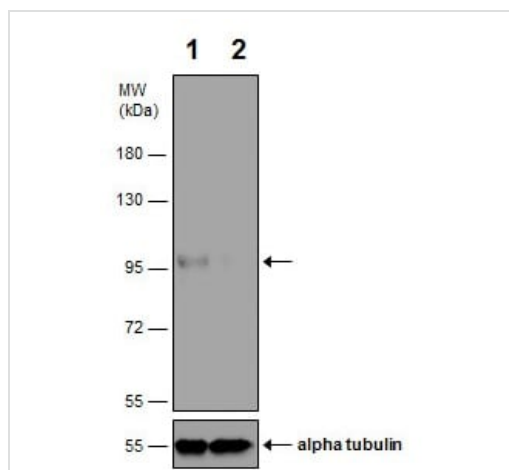
Lane 2 : Glucocorticoid Receptor Knockout HeLa cell extracts

Lysates/proteins at 30 µg per lane.

Secondary

All lanes : HRP-conjugated anti-rabbit IgG

Predicted band size: 86 kDa



Western blot - Anti-Glucocorticoid Receptor antibody (ab227524)

All lanes : Anti-Glucocorticoid Receptor antibody (ab227524) at 1/1000 dilution

Lane 1 : HeLa (human epithelial cell line from cervix adenocarcinoma) whole cell extract

Lane 2 : Glucocorticoid Receptor knockout HeLa (human epithelial cell line from cervix adenocarcinoma) whole cell extract

Lysates/proteins at 30 µg per lane.

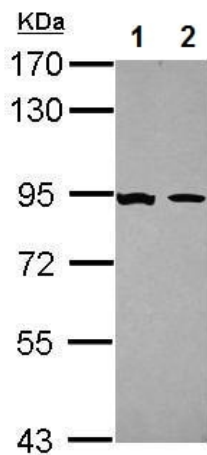
Secondary

All lanes : HRP-conjugated anti-rabbit IgG

Developed using the ECL technique.

Predicted band size: 86 kDa

7.5% SDS-PAGE gel.



Western blot - Anti-Glucocorticoid Receptor antibody (ab227524)

All lanes : Anti-Glucocorticoid Receptor antibody (ab227524) at 1/1000 dilution

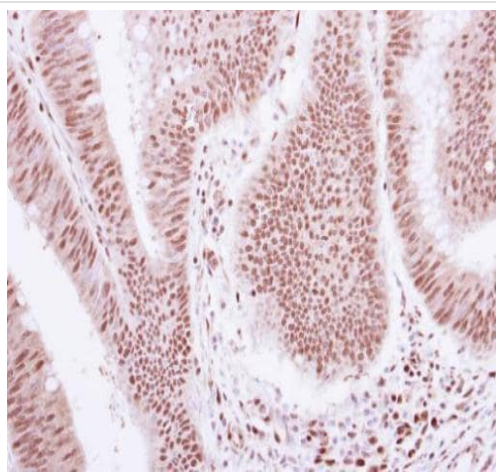
Lane 1 : Jurkat (human T cell leukemia cell line from peripheral blood) whole cell lysate

Lane 2 : Raji (human Burkitt's lymphoma cell line) whole cell lysate

Lysates/proteins at 30 µg per lane.

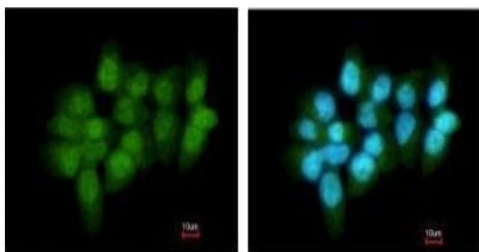
Predicted band size: 86 kDa

7.5% SDS-PAGE gel.



Immunohistochemistry (Formalin/PFA-fixed paraffin-embedded sections) - Anti-Glucocorticoid Receptor antibody (ab227524)

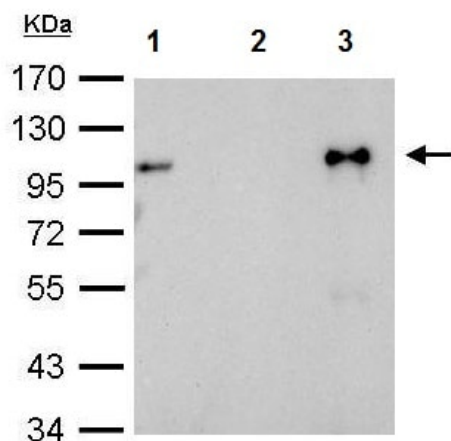
Paraffin-embedded human colon carcinoma tissue stained for Glucocorticoid Receptor using ab227524 at 1/250 dilution in immunohistochemical analysis.



Immunocytochemistry/ Immunofluorescence - Anti-Glucocorticoid Receptor antibody (ab227524)

Paraformaldehyde-fixed A431 (human epidermoid carcinoma cell line) cells stained for Glucocorticoid Receptor (green) using ab227524 at 1/200 dilution in ICC/IF.

Nuclear counterstain: Hoechst 33342 (blue).



Immunoprecipitation - Anti-Glucocorticoid Receptor antibody (ab227524)

Glucocorticoid Receptor was immunoprecipitated from 1 mg HeLa (human epithelial cell line from cervix adenocarcinoma) whole cell lysate with 2.5 µg of ab227524. Western blot was performed from the immunoprecipitate using ab227524 at 1/1000 dilution.

Lane 1: HeLa whole cell lysate 40 µg (Input).

Lane 2: 2.5 µg preimmune rabbit IgG instead of ab227524 in HeLa whole cell lysate.

Lane 3: ab227524 IP in HeLa whole cell lysate.

Please note: All products are "FOR RESEARCH USE ONLY. NOT FOR USE IN DIAGNOSTIC PROCEDURES"

Our Abpromise to you: Quality guaranteed and expert technical support

- Replacement or refund for products not performing as stated on the datasheet
- Valid for 12 months from date of delivery
- Response to your inquiry within 24 hours
- We provide support in Chinese, English, French, German, Japanese and Spanish
- Extensive multi-media technical resources to help you
- We investigate all quality concerns to ensure our products perform to the highest standards

If the product does not perform as described on this datasheet, we will offer a refund or replacement. For full details of the Abpromise, please visit <https://www.abcam.cn/abpromise> or contact our technical team.

Terms and conditions

- Guarantee only valid for products bought direct from Abcam or one of our authorized distributors