

Anti-GLO1 antibody [6F10] ab81461

敲除 验证

★★★★☆ [3 Abreviews](#) [11 References](#) [4 图像](#)

概述

产品名称	Anti-GLO1抗体[6F10]
描述	大鼠单克隆抗体[6F10] to GLO1
宿主	Rat
经测试应用	适用于: Flow Cyt (Intra), ICC/IF, WB
种属反应性	与反应: Mouse, Human, African green monkey
免疫原	Recombinant full length protein. This information is proprietary to Abcam and/or its suppliers.
阳性对照	WB: COS-1, L929 and HeLa whole cell extracts. ICC/IF: Hela cells. HeLa cells : Flow Cyt (Intra).
常规说明	

ab81461 also reacts with Simian.

The Life Science industry has been in the grips of a reproducibility crisis for a number of years. Abcam is leading the way in addressing this with our range of recombinant monoclonal antibodies and knockout edited cell lines for gold-standard validation. Please check that this product meets your needs before purchasing.

If you have any questions, special requirements or concerns, please send us an inquiry and/or contact our Support team ahead of purchase. Recommended alternatives for this product can be found below, along with publications, customer reviews and Q&As

性能

形式	Liquid
存放说明	Shipped at 4°C. Upon delivery aliquot and store at -20°C. Avoid repeated freeze / thaw cycles.
存储溶液	pH: 6 Constituents: 50% Glycerol (glycerin, glycerine), PBS
纯化说明	The antibody was produced from the hybridoma cultured in serum free medium and purified under mild conditions by propriety chromatography processes. It is filter sterilized.
Primary antibody说明	ab81461 also reacts with Simian.
克隆	单克隆
克隆编号	6F10

同种型 IgG2b
轻链类型 kappa

应用

The Abpromise guarantee **Abpromise™** 承诺保证使用 ab81461 于以下的经测试应用

“应用说明”部分 下显示的仅为推荐的起始稀释度；实际最佳的稀释度/浓度应由使用者检定。

应用	Ab评论	说明
Flow Cyt (Intra)		Use 1µg for 10 ⁶ cells. ab18536 - Rat monoclonal IgG2b, is suitable for use as an isotype control with this antibody.
ICC/IF		Use at an assay dependent concentration.
WB		1/1000. Predicted molecular weight: 21 kDa.

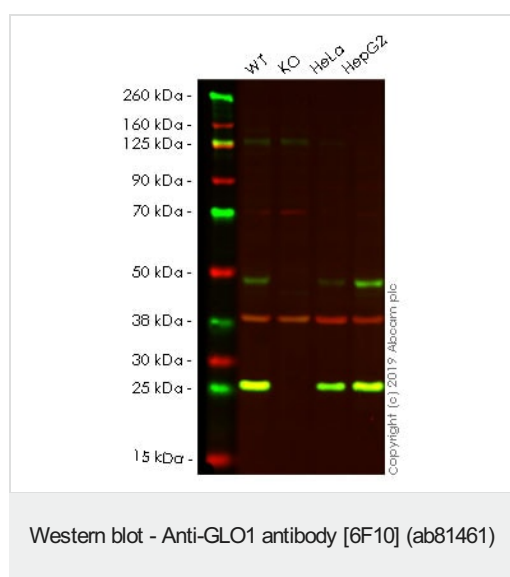
靶标

功能 Catalyzes the conversion of hemimercaptal, formed from methylglyoxal and glutathione, to S-lactoylglutathione.

通路 Secondary metabolite metabolism; methylglyoxal degradation; (R)-lactate from methylglyoxal: step 1/2.

序列相似性 Belongs to the glyoxalase I family.

图片



All lanes : Anti-GLO1 antibody [6F10] (ab81461) at 1/1000 dilution

Lane 1 : Wild-type HAP1 whole cell lysate

Lane 2 : GLO1 knockout HAP1 whole cell lysate

Lane 3 : HeLa whole cell lysate

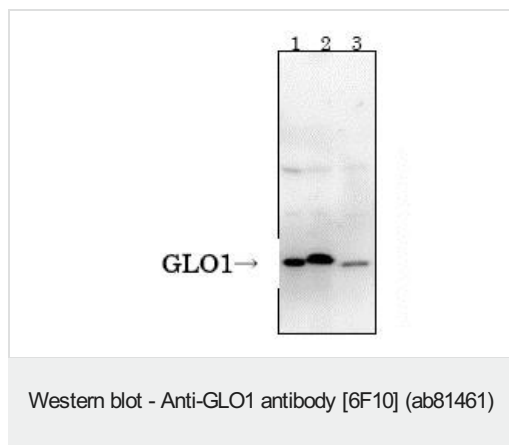
Lane 4 : HepG2 whole cell lysate

Lysates/proteins at 20 µg per lane.

Predicted band size: 21 kDa

Lanes 1 - 4: Merged signal (red and green). Green - ab81461 observed at 21 kDa. Red - loading control, **ab181602**, observed at 37 kDa.

ab81461 was shown to specifically react with in wild-type HAP1 cells as signal was lost in GLO1 knockout cells. Wild-type and GLO1 knockout samples were subjected to SDS-PAGE. The membrane was blocked with 3% Milk. Ab81461 and **ab181602** (Rabbit anti-GAPDH loading control) were incubated overnight at 4°C at 1/1000 dilution and 1/20000 dilution respectively. Blots were developed with Goat anti-Rat IgG H&L (IRDye® 800CW) preabsorbed and Goat anti-Rabbit IgG H&L (IRDye® 680RD) preabsorbed **ab216777** secondary antibodies at 1/20000 dilution for 1 hour at room temperature before imaging.



All lanes : Anti-GLO1 antibody [6F10] (ab81461)

Lane 1 : COS-1 (simian) whole cell extract

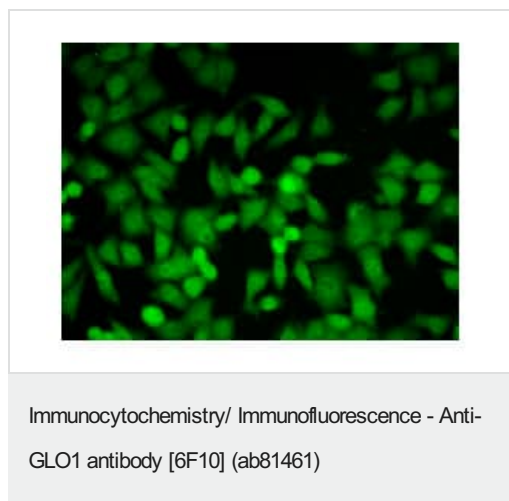
Lane 2 : L929 (mouse) whole cell extract

Lane 3 : HeLa (human) whole cell extract

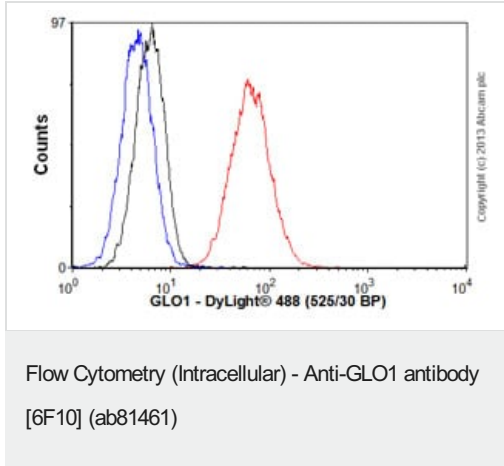
Predicted band size: 21 kDa

Observed band size: 27-29 kDa

Mouse GLO1 shows a single band of 27 kDa while human and simian ones show 29 kDa.



Immunofluorescent staining of HeLa cells with ab81461.



Overlay histogram showing HeLa cells stained with ab81461 (red line). The cells were fixed with 80% methanol (5 min) and then permeabilized with 0.1% PBS-Tween for 20 min. The cells were then incubated in 1x PBS / 10% normal goat serum / 0.3M glycine to block non-specific protein-protein interactions followed by the antibody (ab81461, 1µg/1x10⁶ cells) for 30 min at 22°C. The secondary antibody used was DyLight® 488 goat anti-rat IgG (H+L) (**ab98386**) at 1/500 dilution for 30 min at 22°C. Isotype control antibody (black line) was rat IgG2b [RTK4530] (**ab18541**, 1µg/1x10⁶ cells) used under the same conditions. Unlabelled sample (blue line). Acquisition of >5,000 events were collected using a 20mW Argon ion laser (488nm) and 525/30 bandpass filter.

Please note: All products are "FOR RESEARCH USE ONLY. NOT FOR USE IN DIAGNOSTIC PROCEDURES"

Our Abpromise to you: Quality guaranteed and expert technical support

- Replacement or refund for products not performing as stated on the datasheet
- Valid for 12 months from date of delivery
- Response to your inquiry within 24 hours
- We provide support in Chinese, English, French, German, Japanese and Spanish
- Extensive multi-media technical resources to help you
- We investigate all quality concerns to ensure our products perform to the highest standards

If the product does not perform as described on this datasheet, we will offer a refund or replacement. For full details of the Abpromise, please visit <https://www.abcam.cn/abpromise> or contact our technical team.

Terms and conditions

- Guarantee only valid for products bought direct from Abcam or one of our authorized distributors