

### Anti-GIPC1 antibody ab5951

★★★★★ [3 Abreviews](#) [4 References](#) [4 图像](#)

#### 概述

产品名称	Anti-GIPC1抗体
描述	山羊多克隆抗体to GIPC1
宿主	Goat
经测试应用	适用于: IHC-P, WB
种属反应性	与反应: Human 预测可用于: Mouse, Rat 
免疫原	Synthetic peptide corresponding to Human GIPC1 aa 300 to the C-terminus (C terminal). (NP_974197.1; NP_974199.1; NP_974196.1; NP_974198.1; NP_974223.1) Database link: <a href="#">O14908</a> <div>  <a href="#">Run BLAST with</a>  <a href="#">Run BLAST with</a> </div>
常规说明	<p>The Life Science industry has been in the grips of a reproducibility crisis for a number of years. Abcam is leading the way in addressing this with our range of recombinant monoclonal antibodies and knockout edited cell lines for gold-standard validation. Please check that this product meets your needs before purchasing.</p> <p>If you have any questions, special requirements or concerns, please send us an inquiry and/or contact our Support team ahead of purchase. Recommended alternatives for this product can be found below, along with publications, customer reviews and Q&amp;As</p>

#### 性能

形式	Liquid
存放说明	Shipped at 4°C. Upon delivery aliquot and store at -20°C or -80°C. Avoid repeated freeze / thaw cycles.
存储溶液	pH: 7.30 Preservative: 0.02% Sodium azide Constituents: Tris buffered saline, 0.5% BSA
纯度	Immunogen affinity purified
纯化说明	Purified from goat serum by ammonium sulphate precipitation followed by antigen affinity chromatography using the immunizing peptide.
克隆	多克隆
同种型	IgG

应用

The Abpromise guarantee      **Abpromise™**承诺保证使用ab5951于以下的经测试应用

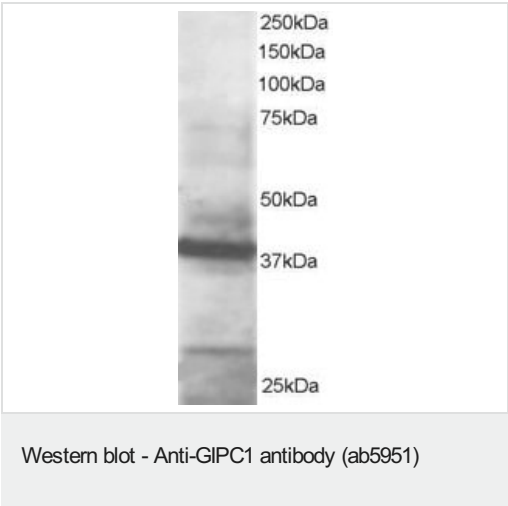
“应用说明”部分 下显示的仅为推荐的起始稀释度;实际最佳的稀释度/浓度应由使用者检定。

应用	Ab评论	说明
IHC-P	★★★★★ (1)	Use at an assay dependent concentration.
WB	★★★★★ (2)	Use a concentration of 1 - 3 µg/ml. Detects a band of approximately 40 kDa (predicted molecular weight: 38 kDa). 1 hour primary incubation is recommended for this product.

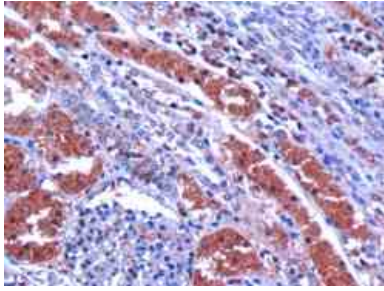
靶标

功能	May be involved in G protein-linked signaling.
组织特异性	Widely expressed.
序列相似性	Belongs to the GIPC family. Contains 1 PDZ (DHR) domain.
细胞定位	Cytoplasm. Membrane.

图片

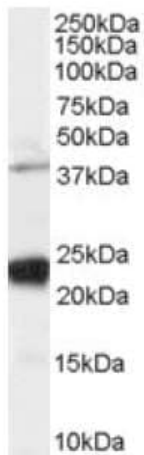


ab5951 at 1µg/ml staining GIPC1 at approximately 40kDa in HeLa Lysate by Western blot (ECL). ab5951 at 1µg/ml staining GIPC1 at approximately 40kDa in HeLa Lysate by Western blot (ECL).



Immunohistochemistry (Formalin/PFA-fixed paraffin-embedded sections) - Anti-GIPC1 antibody (ab5951)

Ab5951 (10ug/ml) staining human GIPC1 in human kidney by immunohistochemistry using paraffin embedded tissue. Microwaved antigen retrieval with Tris/EDTA buffer pH9, HRP-staining.



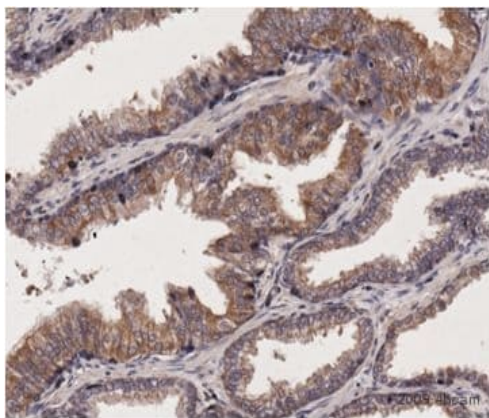
Western blot - Anti-GIPC1 antibody (ab5951)

Anti-GIPC1 antibody (ab5951) at 0.03 µg/ml + Human HeLa cell lysate (RIPA buffer, 35µg total protein per lane)

**Predicted band size:** 38 kDa

**Observed band size:** 24,38 kDa

Primary incubated for 1 hour. Detected by western blot using chemiluminescence.



Immunohistochemistry (Formalin/PFA-fixed paraffin-embedded sections) - Anti-GIPC1 antibody (ab5951)

This image is courtesy of an anonymous Abreview

ab5951 staining GIPC1 in human prostate tissue section by immunohistochemistry (formalin/PFA-fixed paraffin-embedded sections). Cells were formalin fixed prior to blocking in 10% serum for 20 minutes at RT. The primary antibody was diluted 1/250 and incubated with the sample for 24 hour at 4°C. A biotin conjugated rabbit anti-goat antibody, diluted 1/250, was used as the secondary.

**Please note:** All products are "FOR RESEARCH USE ONLY. NOT FOR USE IN DIAGNOSTIC PROCEDURES"

**Our Abpromise to you: Quality guaranteed and expert technical support**

- Replacement or refund for products not performing as stated on the datasheet

- Valid for 12 months from date of delivery
- Response to your inquiry within 24 hours
- We provide support in Chinese, English, French, German, Japanese and Spanish
- Extensive multi-media technical resources to help you
- We investigate all quality concerns to ensure our products perform to the highest standards

If the product does not perform as described on this datasheet, we will offer a refund or replacement. For full details of the Abpromise, please visit <https://www.abcam.cn/abpromise> or contact our technical team.

#### **Terms and conditions**

---

- Guarantee only valid for products bought direct from Abcam or one of our authorized distributors