

# Anti-GFP antibody [EPR14104] - Chicken IgY (Chimeric) ab300643

重组

## 9 图像

### 概述

产品名称	Anti-GFP抗体[EPR14104]-鸡IgY (Chimeric)
描述	鸡单克隆抗体[EPR14104] to GFP - Chimeric
宿主	Chicken chimera
经测试应用	<b>适用于:</b> Flow Cyt (Intra), ICC/IF, WB, IHC-P
种属反应性	<b>与反应:</b> Species independent
免疫原	Recombinant full length protein. This information is proprietary to Abcam and/or its suppliers.
阳性对照	WB: GFP transfected 293 whole cell lysate. IHC-P: HEK-293T transfected with GFP expression vector containing a His tag. ICC/IF: 293/GFP cells. HEK-293T cells transfected with Firefly Luciferase expression vector containing a GFP tag. Flow Cyt (Intra): 293T transfected with GFP tagged Firefly Luciferase over expression vector.
常规说明	<p>This chicken monoclonal chimeric antibody has been engineered from a RabMAb parent antibody (<a href="#">ab183734</a>). By necessity, some rabbit sequence is retained as part of the variable domain. When multiplexing with other rabbit-derived antibodies, using cross absorbed FC-reactive secondary antibodies are recommended.</p> <p>This product is a recombinant monoclonal antibody, which offers several advantages including:</p> <ul style="list-style-type: none"><li>- High batch-to-batch consistency and reproducibility</li><li>- Improved sensitivity and specificity</li><li>- Long-term security of supply</li><li>- Animal-free production</li></ul> <p>For more information <a href="#">see here</a>.</p>

### 性能

形式	Liquid
存放说明	Shipped at 4°C. Store at +4°C short term (1-2 weeks). Upon delivery aliquot. Store at -20°C long term. Avoid freeze / thaw cycle.
存储溶液	pH: 7.20 Preservative: 0.01% Sodium azide Constituents: 59% PBS, 40% Glycerol (glycerin, glycerine), 0.05% BSA

纯度	Thiophilic Chromatography
克隆	单克隆
克隆编号	EPR14104
同种型	IgY

## 应用

**The Abpromise guarantee**      **Abpromise™** 承诺保证使用 ab300643 于以下的经测试应用

“应用说明”部分 下显示的仅为推荐的起始稀释度；实际最佳的稀释度/浓度应由使用者检定。

应用	Ab评论	说明
Flow Cyt (Intra)		1/500.
ICC/IF		1/50.
WB		1/1000. Detects a band of approximately 27 kDa (predicted molecular weight: 27 kDa).
IHC-P		1/10000. Perform heat mediated antigen retrieval with citrate buffer pH 6 before commencing with IHC staining protocol.

## 靶标

### 相关性

**Function:** Energy-transfer acceptor. Its role is to transduce the blue chemiluminescence of the protein aequorin into green fluorescent light by energy transfer. Fluoresces in vivo upon receiving energy from the Ca<sup>2+</sup>-activated photoprotein aequorin.

**Subunit structure:** Monomer.

**Tissue specificity:** Photocytes.

**Post-translational modification:** Contains a chromophore consisting of modified amino acid residues. The chromophore is formed by autocatalytic backbone condensation between Ser-65 and Gly-67, and oxidation of Tyr-66 to didehydrotyrosine. Maturation of the chromophore requires nothing other than molecular oxygen.

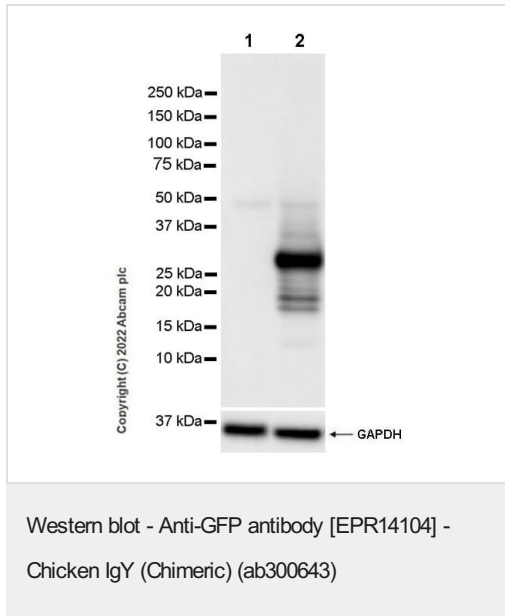
**Biotechnological use:** Green fluorescent protein has been engineered to produce a vast number of variously colored mutants, fusion proteins, and biosensors. Fluorescent proteins and its mutated allelic forms, blue, cyan and yellow have become a useful and ubiquitous tool for making chimeric proteins, where they function as a fluorescent protein tag. Typically they tolerate N- and C-terminal fusion to a broad variety of proteins. They have been expressed in most known cell types and are used as a noninvasive fluorescent marker in living cells and organisms. They enable a wide range of applications where they have functioned as a cell lineage tracer, reporter of gene expression, or as a measure of protein-protein interactions. Can also be used as a molecular thermometer, allowing accurate temperature measurements in fluids. The measurement process relies on the detection of the blinking of GFP using fluorescence correlation spectroscopy.

**Sequence similarities:** Belongs to the GFP family.

**Biophysicochemical properties:** Absorption: Abs(max)=395 nm

Exhibits a smaller absorbance peak at 470 nm. The fluorescence emission spectrum peaks at 509 nm with a shoulder at 540 nm.

## 图片



**All lanes :** Anti-GFP antibody [EPR14104] - Chicken IgY (Chimeric) (ab300643) at 1/1000 dilution

**Lane 1 :** Non-transfected 293T (human embryonic kidney epithelial cell) whole cell lysate

**Lane 2 :** GFP transfected 293 whole cell lysate

Lysates/proteins at 20 µg per lane.

### Secondary

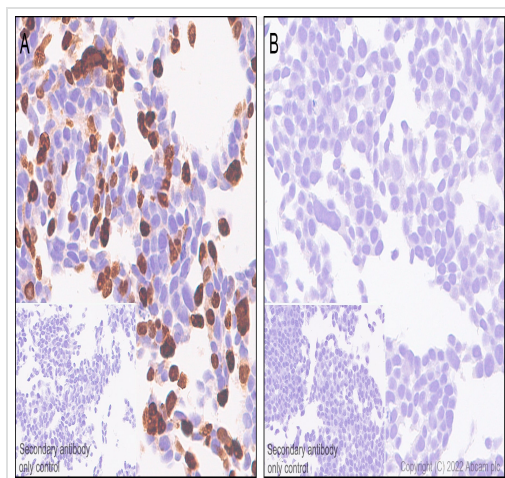
**All lanes :** Goat Anti-Chicken IgY H&L (HRP) (**ab6877**) at 1/20000 dilution

**Predicted band size:** 27 kDa

**Observed band size:** 27 kDa

Blocking / Diluting buffer and concentration: 5% NFDM/TBST

Exposure time: 3.25 seconds

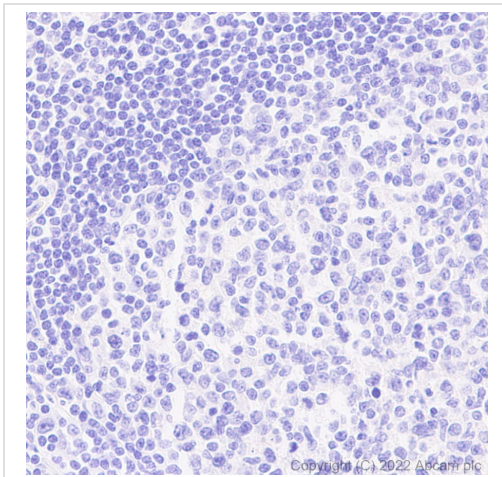


Immunohistochemistry (Formalin/PFA-fixed paraffin-embedded sections) - Anti-GFP antibody [EPR14104] - Chicken IgY (Chimeric) (ab300643)

Immunohistochemical analysis of paraffin-embedded (A) HEK-293T transfected with GFP expression vector containing a his tag. (B) Wild type HEK-293T cells labeling GFP with ab300643 at 1/10000 dilution (0.996 µg/ml) followed by ready to use Leica DS9800 (BOND™ Polymer Refine Detection) kit. Positive staining on HEK-293T transfected with GFP expression vector containing a his tag (Image: A); No staining on Wild type HEK-293T cells (Image: B). The section was incubated with ab300643 for 30 mins at room temperature followed by anti-chicken IgG antibody (**ab97136**) for 8 mins during the LeicaDS9800 kit staining procedure. The immunostaining was performed on a Leica Biosystems BOND® RX instrument. Counterstained with Hematoxylin.

Secondary antibody only control: Secondary antibody is ready to use LeicaDS9800 (BOND™ Polymer Refine Detection).

Heat mediated antigen retrieval with Citrate buffer (pH 6.0, epitope retrieval solution 1) for 20 mins.

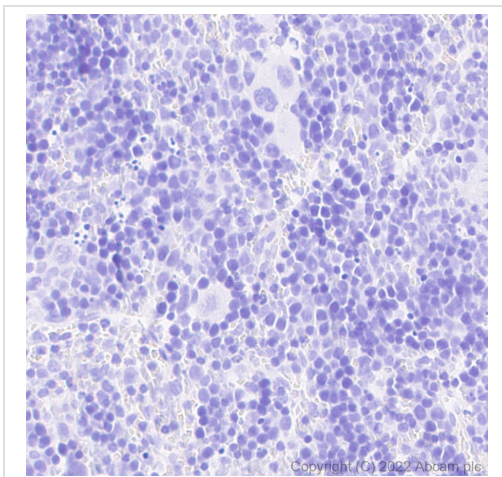


Immunohistochemistry (Formalin/PFA-fixed paraffin-embedded sections) - Anti-GFP antibody [EPR14104] - Chicken IgY (Chimeric) (ab300643)

Immunohistochemical analysis of paraffin-embedded human tonsil labeling GFP with ab300643 at 1/10000 dilution (0.996 µg/ml) followed by ready to use Leica DS9800 (BOND™ Polymer Refine Detection) kit. No staining on human tonsil. The section was incubated with ab300643 for 30 mins at room temperature followed by anti-chicken IgG antibody (**ab97136**) for 8 mins during the Leica DS9800 kit staining procedure. The immunostaining was performed on a Leica Biosystems BOND® RX instrument. Counterstained with Hematoxylin.

Secondary antibody only control: Secondary antibody is a ready to use LeicaDS9800 (BOND™ Polymer Refine Detection).

Heat mediated antigen retrieval with Citrate buffer (pH 6.0, epitope retrieval solution 1) for 20 mins.

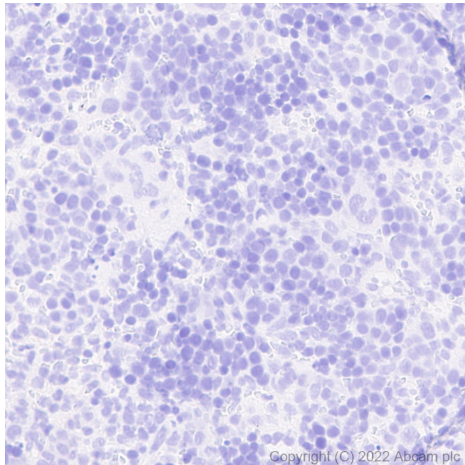


Immunohistochemistry (Formalin/PFA-fixed paraffin-embedded sections) - Anti-GFP antibody [EPR14104] - Chicken IgY (Chimeric) (ab300643)

Immunohistochemical analysis of paraffin-embedded mouse spleen labeling GFP with ab300643 at 1/10000 dilution (0.996 µg/ml) followed by ready to use Leica DS9800 (BOND™ Polymer Refine Detection) kit. No staining on mouse spleen. The section was incubated with ab300643 for 30 mins at room temperature followed by anti-chicken IgG antibody (**ab97136**) for 8 mins during the LeicaDS9800 kit staining procedure. The immunostaining was performed on a Leica Biosystems BOND® RX instrument. Counterstained with Hematoxylin.

Secondary antibody only control: Secondary antibody is ready to use LeicaDS9800 (BOND™ Polymer Refine Detection).

Heat mediated antigen retrieval with Citrate buffer (pH 6.0, epitope retrieval solution 1) for 20 mins.

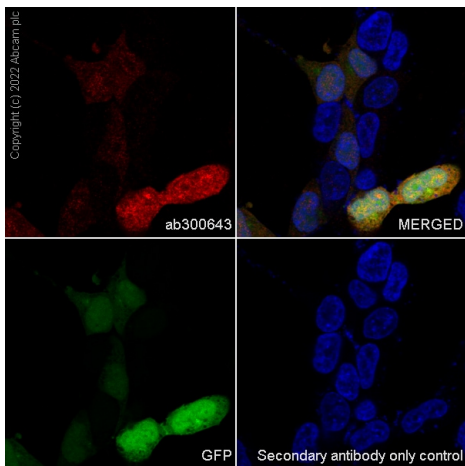


Immunohistochemistry (Formalin/PFA-fixed paraffin-embedded sections) - Anti-GFP antibody [EPR14104] - Chicken IgY (Chimeric) (ab300643)

Immunohistochemical analysis of paraffin-embedded rat spleen labeling GFP with ab300643 at 1/10000 dilution (0.996 µg/ml) followed by ready to use Leica DS9800 (BOND™ Polymer Refine Detection) kit. No staining on rat spleen. The section was incubated with ab300643 for 30 mins at room temperature followed by anti-chicken IgG antibody (**ab97136**) for 8 mins during the LeicaDS9800 kit staining procedure. The immunostaining was performed on a Leica Biosystems BOND® RX instrument. Counterstained with Hematoxylin.

Secondary antibody only control: Secondary antibody is ready to use LeicaDS9800 (BOND™ Polymer Refine Detection).

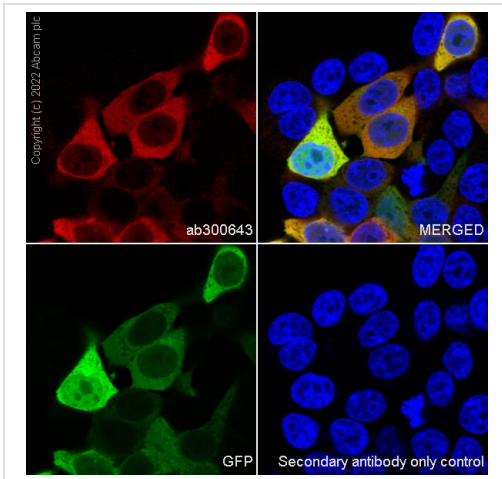
Heat mediated antigen retrieval with Citrate buffer (pH 6.0, epitope retrieval solution 1) for 20 mins.



Immunocytochemistry/ Immunofluorescence - Anti-GFP antibody [EPR14104] - Chicken IgY (Chimeric) (ab300643)

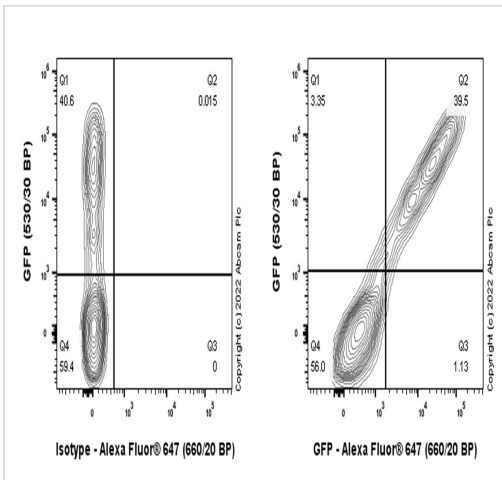
Immunofluorescent analysis of 4% Paraformaldehyde fixed, 0.1% Triton X-100 permeabilized 293/GFP (human embryonic kidney epithelial cell) cells labeling GFP with ab300643 at 1/50 dilution followed by **ab150175** Goat Anti-Chicken IgY H&L (Alexa Fluor® 647) preadsorbed secondary antibody at 1/1000 (2 µg/ml) dilution (red). Confocal image showing positive staining in 293/GFP cells. The nuclear counter stain is DAPI (blue).





Immunocytochemistry/ Immunofluorescence - Anti-GFP antibody [EPR14104] - Chicken IgY (Chimeric) (ab300643)

Immunofluorescent analysis of 4% Paraformaldehyde fixed, 0.1% Triton X-100 permeabilized HEK293T (human embryonic kidney epithelial cells) labeling GFP with ab300643 at 1/50 dilution followed by **ab150175** Goat Anti-Chicken IgY H&L (Alexa Fluor® 647) preadsorbed secondary antibody at 1/1000 (2 µg/ml) dilution (red). Confocal image showing positive staining in HEK-293T cells transfected with a Firefly Luciferase expression vector containing a GFP tag. The nuclear counter stain is DAPI (blue).



Flow Cytometry (Intracellular) - Anti-GFP antibody [EPR14104] - Chicken IgY (Chimeric) (ab300643)

Flow Cytometry (Intracellular) analysis of 293T transfected with GFP tagged Firefly Luciferase over expression vector labeling GFP (right) with ab300643 at a 1/500 dilution. Cells were fixed with 4% paraformaldehyde and permeabilized with 90% methanol. A Goat anti-Chicken IgY H&L (Alexa Fluor® 647, **ab150175**) was used as the secondary antibody at a 1/5000 dilution. Chicken IgY Isotype control. (left)

### Why choose a recombinant antibody?



**Research with confidence**  
Consistent and reproducible results



**Long-term and scalable supply**  
Recombinant technology



**Success from the first experiment**  
Confirmed specificity



**Ethical standards compliant**  
Animal-free production

Anti-GFP antibody [EPR14104] - Chicken IgY  
(Chimeric) (ab300643)

**Please note:** All products are "FOR RESEARCH USE ONLY. NOT FOR USE IN DIAGNOSTIC PROCEDURES"

### Our Abpromise to you: Quality guaranteed and expert technical support

---

- Replacement or refund for products not performing as stated on the datasheet
- Valid for 12 months from date of delivery
- Response to your inquiry within 24 hours
- We provide support in Chinese, English, French, German, Japanese and Spanish
- Extensive multi-media technical resources to help you
- We investigate all quality concerns to ensure our products perform to the highest standards

If the product does not perform as described on this datasheet, we will offer a refund or replacement. For full details of the Abpromise, please visit <https://www.abcam.cn/abpromise> or contact our technical team.

### Terms and conditions

---

- Guarantee only valid for products bought direct from Abcam or one of our authorized distributors