

Anti-GFP antibody ab6556

★★★★★ [61 Abreviews](#) [1204 References](#) [3 图像](#)

概述

产品名称	Anti-GFP抗体
描述	兔多克隆抗体to GFP
宿主	Rabbit
特异性	GFP antibody (ab6556) is reactive against all variants of <i>Aequorea victoria</i> GFP such as S65T-GFP, RS-GFP, YFP, CFP, RFP and EGFP.
经测试应用	适用于: IHC-P, Electron Microscopy, ICC, IP, Flow Cyt, IHC-Fr, WB
种属反应性	与反应: Species independent
免疫原	Recombinant full length protein corresponding to GFP. Database link: P42212
常规说明	<p>Please note that a mistake was made in reference 4 (Mesaeli et.al., J. Cell. Biol. 1999 Mar 8;144(5):857-68). The antibody used for immunohistochemistry on paraformaldehyde fixed tissues was the crude serum version of this antibody (Abcam ab290) and not Clontech's monoclonal as stated. This product is supplied in 25% glycerol. During freezeing and thawing some phase separation might occur - Please ensure that the solution is mixed thoroughly but GENTLY before use.</p> <p>This antibody (ab6556) is the purified version of our best-selling rabbit polyclonal to GFP (ab290). It has been developed specifically for use in applications requiring a high titre and specificity with minimum background such as immuno-electron microscopy.</p> <p>This anti-GFP antibody recognizes the enhanced form of GFP as well.</p> <p>Abcam recommended secondaries - Goat Anti-Rabbit HRP (ab205718) and Goat Anti-Rabbit Alexa Fluor® 488 (ab150077). Or search our wide range of secondary antibodies for use with your experiment.</p> <p>The Life Science industry has been in the grips of a reproducibility crisis for a number of years. Abcam is leading the way in addressing this with our range of recombinant monoclonal antibodies and knockout edited cell lines for gold-standard validation. Please check that this product meets your needs before purchasing.</p> <p>If you have any questions, special requirements or concerns, please send us an inquiry and/or contact our Support team ahead of purchase. Recommended alternatives for this product can be found below, along with publications, customer reviews and Q&As</p>

性能

形式	Liquid
存放说明	Shipped at 4°C. Store at +4°C short term (1-2 weeks). Upon delivery aliquot. Store at -20°C or -80°C. Avoid freeze / thaw cycle.
存储溶液	pH: 7.40 Constituents: 0.79% Tris HCl, 25% Glycerol
纯度	Immunogen affinity purified
纯化说明	This antibody is an affinity purified rabbit anti-GFP antibody purified on an affinity chromatography column made with highly purified recombinant GFP.
克隆	多克隆
同种型	IgG

应用

The Abpromise guarantee **Abpromise™**承诺保证使用ab6556于以下的经测试应用

“应用说明”部分 下显示的仅为推荐的起始稀释度;实际最佳的稀释度/浓度应由使用者检定。

应用	Ab评论	说明
IHC-P	★★★★★ (11)	Use at an assay dependent concentration.
Electron Microscopy		1/5000.
ICC	★★★★★ (1)	1/2000.
IP	★★★★☆ (3)	Use at an assay dependent concentration.
Flow Cyt	★★★★★ (1)	Use at an assay dependent concentration.
IHC-Fr	★★★★☆ (4)	Use at an assay dependent concentration.
WB	★★★★★ (27)	Use at an assay dependent concentration. Predicted molecular weight: 27 kDa.

靶标

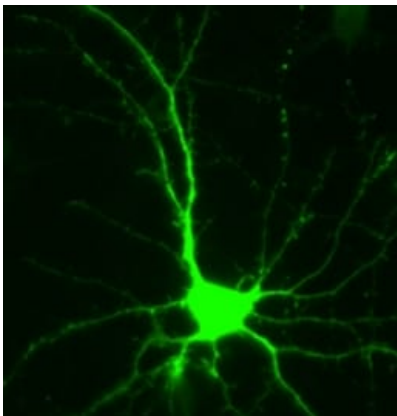
相关性	<p>Function: Energy-transfer acceptor. Its role is to transduce the blue chemiluminescence of the protein aequorin into green fluorescent light by energy transfer. Fluoresces in vivo upon receiving energy from the Ca²⁺ -activated photoprotein aequorin.</p> <p>Subunit structure: Monomer.</p> <p>Tissue specificity: Photocytes.</p> <p>Post-translational modification: Contains a chromophore consisting of modified amino acid residues. The chromophore is formed by autocatalytic backbone condensation between Ser-65 and Gly-67, and oxidation of Tyr-66 to didehydrotyrosine. Maturation of the chromophore requires nothing other than molecular oxygen.</p>
-----	--

Biotechnological use: Green fluorescent protein has been engineered to produce a vast number of variously colored mutants, fusion proteins, and biosensors. Fluorescent proteins and its mutated allelic forms, blue, cyan and yellow have become a useful and ubiquitous tool for making chimeric proteins, where they function as a fluorescent protein tag. Typically they tolerate N- and C-terminal fusion to a broad variety of proteins. They have been expressed in most known cell types and are used as a noninvasive fluorescent marker in living cells and organisms. They enable a wide range of applications where they have functioned as a cell lineage tracer, reporter of gene expression, or as a measure of protein-protein interactions. Can also be used as a molecular thermometer, allowing accurate temperature measurements in fluids. The measurement process relies on the detection of the blinking of GFP using fluorescence correlation spectroscopy.

Sequence similarities: Belongs to the GFP family.

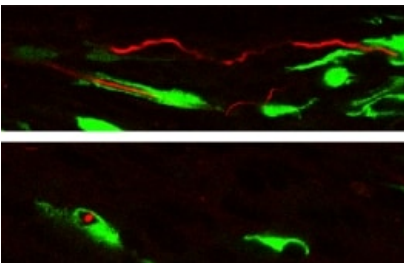
Biophysicochemical properties: Absorption: Abs(max)=395 nm
Exhibits a smaller absorbance peak at 470 nm. The fluorescence emission spectrum peaks at 509 nm with a shoulder at 540 nm.

图片



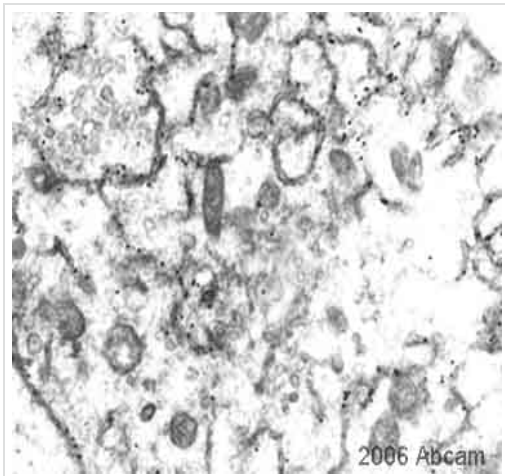
Immunocytochemistry - Anti-GFP antibody (ab6556)

This image shows a single primary hippocampal neuron from a primary culture overexpressing GFP stained with ab6556 at a dilution of 1/2000. This picture was kindly supplied as part of the review submitted by one of our customers.



Immunocytochemistry - Anti-GFP antibody (ab6556)

This image shows IF using GFP-expressing glial cells (green) transplanted into lesioned rat spinal cord. This was detected using ab6556 anti-GFP antibody and a FITC conjugated secondary antibody. Axons are labelled red by an antibody to neurofilament-200 and a rhodamine secondary. ab6556 reveals the morphology of the transplanted cells to such an extent that their close interactions with axons are obvious. The top picture shows an optical section from a confocal microscope scan showing how a GFP cell wraps around a branched axon travelling longitudinally. The bottom picture consists of an optical section from another confocal scan showing a GFP cell enveloping an axon in the transverse plane. Review by Andrew Toft submitted 19 May 2004.



Electron Microscopy - Anti-GFP antibody (ab6556)

Specific labeling of a Trk-GFP fusion protein being synthesized on ER in sympathetic neurons infected with an adenovirus carrying the construct. The gold is associated with the ER membranes. This was done using a 1/5000 dilution of affinity purified antibody (ab6556). The tissue section was fixed and embedded using durcupan resin.

Please note: All products are "FOR RESEARCH USE ONLY. NOT FOR USE IN DIAGNOSTIC PROCEDURES"

Our Abpromise to you: Quality guaranteed and expert technical support

- Replacement or refund for products not performing as stated on the datasheet
- Valid for 12 months from date of delivery
- Response to your inquiry within 24 hours
- We provide support in Chinese, English, French, German, Japanese and Spanish
- Extensive multi-media technical resources to help you
- We investigate all quality concerns to ensure our products perform to the highest standards

If the product does not perform as described on this datasheet, we will offer a refund or replacement. For full details of the Abpromise, please visit <https://www.abcam.cn/abpromise> or contact our technical team.

Terms and conditions

- Guarantee only valid for products bought direct from Abcam or one of our authorized distributors