

Anti-GFAP antibody ab16997

★★★★★ [1 Abreviews](#) [57 References](#) [3 图像](#)

概述

产品名称	Anti-GFAP抗体
描述	兔多克隆抗体to GFAP
宿主	Rabbit
经测试应用	适用于: ICC, IHC-P
种属反应性	与反应: Mouse, Human
免疫原	Full length native protein (purified) corresponding to Cow GFAP. Isolated from cow spinal cord.
常规说明	<p>In the central nervous system, this antibody stains astrocytes and some groups of ependymal cells. However, in the peripheral nervous system, it stains Schwann cells, satellite cells and enteric glial cells.</p> <p>The Life Science industry has been in the grips of a reproducibility crisis for a number of years. Abcam is leading the way in addressing this with our range of recombinant monoclonal antibodies and knockout edited cell lines for gold-standard validation. Please check that this product meets your needs before purchasing.</p> <p>If you have any questions, special requirements or concerns, please send us an inquiry and/or contact our Support team ahead of purchase. Recommended alternatives for this product can be found below, along with publications, customer reviews and Q&As</p>

性能

形式	Liquid
存放说明	Shipped at 4°C. Store at +4°C short term (1-2 weeks). Store at -20°C or -80°C. Avoid freeze / thaw cycle.
存储溶液	<p>pH: 7.3</p> <p>Preservative: 0.05% Sodium azide</p> <p>Constituent: 1% BSA</p>
纯度	IgG fraction
Primary antibody说明	In the central nervous system, this antibody stains astrocytes and some groups of ependymal cells. However, in the peripheral nervous system, it stains Schwann cells, satellite cells and enteric glial cells.
克隆	多克隆

同种型

lgG

应用

The Abpromise guarantee

Abpromise™承诺保证使用ab16997于以下的经测试应用

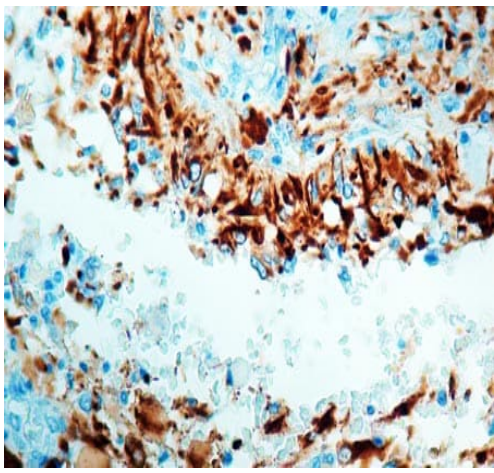
“应用说明”部分 下显示的仅为推荐的起始稀释度;实际最佳的稀释度/浓度应由使用者检定。

应用	Ab评论	说明
ICC		1/100.
IHC-P	★★★★★ (1)	1/50 - 1/250.

靶标

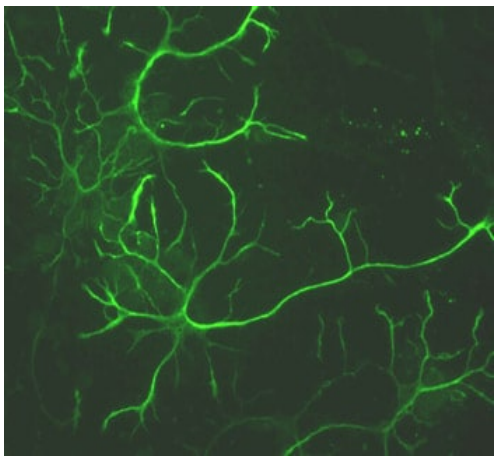
功能	GFAP, a class-III intermediate filament, is a cell-specific marker that, during the development of the central nervous system, distinguishes astrocytes from other glial cells.
组织特异性	Expressed in cells lacking fibronectin.
疾病相关	Defects in GFAP are a cause of Alexander disease (ALEXD) [MIM:203450]. Alexander disease is a rare disorder of the central nervous system. It is a progressive leukoencephalopathy whose hallmark is the widespread accumulation of Rosenthal fibers which are cytoplasmic inclusions in astrocytes. The most common form affects infants and young children, and is characterized by progressive failure of central myelination, usually leading to death usually within the first decade. Infants with Alexander disease develop a leukoencephalopathy with macrocephaly, seizures, and psychomotor retardation. Patients with juvenile or adult forms typically experience ataxia, bulbar signs and spasticity, and a more slowly progressive course.
序列相似性	Belongs to the intermediate filament family.
翻译后修饰	Phosphorylated by PKN1.
细胞定位	Cytoplasm. Associated with intermediate filaments.

图片



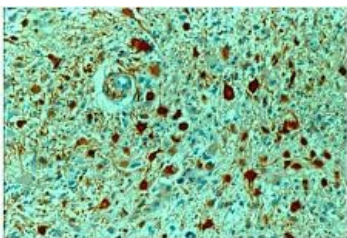
Immunohistochemistry (Formalin/PFA-fixed paraffin-embedded sections) - Anti-GFAP antibody (ab16997)

Immunohistochemical analysis of formalin-fixed, paraffin-embedded human brain tissue, staining GFAP with ab16997.



Immunocytochemistry - Anti-GFAP antibody (ab16997)
Photo courtesy of QBMCellScience

Mouse cortical primary astrocytes stained for GFAP using ab16997 at a dilution of 1/100 in ICC/IF.



Immunohistochemistry (Formalin/PFA-fixed paraffin-embedded sections) - Anti-GFAP antibody (ab16997)

Formalin-fixed, paraffin-embedded section of human brain stained with antibodies to GFAP. Cytoplasmic staining of glia is shown in red.

Please note: All products are "FOR RESEARCH USE ONLY. NOT FOR USE IN DIAGNOSTIC PROCEDURES"

Our Abpromise to you: Quality guaranteed and expert technical support

- Replacement or refund for products not performing as stated on the datasheet
- Valid for 12 months from date of delivery
- Response to your inquiry within 24 hours

- We provide support in Chinese, English, French, German, Japanese and Spanish
- Extensive multi-media technical resources to help you
- We investigate all quality concerns to ensure our products perform to the highest standards

If the product does not perform as described on this datasheet, we will offer a refund or replacement. For full details of the Abpromise, please visit <https://www.abcam.cn/abpromise> or contact our technical team.

Terms and conditions

- Guarantee only valid for products bought direct from Abcam or one of our authorized distributors