

# Anti-Geminin antibody ab175799

★★★★★ [1 Abreviews](#) [5 References](#) [4 图像](#)

### 概述

产品名称	Anti-Geminin抗体
描述	兔多克隆抗体to Geminin
宿主	Rabbit
经测试应用	适用于: WB, IP, ICC/IF, IHC-P
种属反应性	与反应: Mouse, Human
免疫原	Recombinant full length protein corresponding to Human Geminin.
常规说明	<p>The Life Science industry has been in the grips of a reproducibility crisis for a number of years. Abcam is leading the way in addressing this with our range of recombinant monoclonal antibodies and knockout edited cell lines for gold-standard validation. Please check that this product meets your needs before purchasing.</p> <p>If you have any questions, special requirements or concerns, please send us an inquiry and/or contact our Support team ahead of purchase. Recommended alternatives for this product can be found below, along with publications, customer reviews and Q&amp;As</p>

### 性能

形式	Liquid
存放说明	Shipped at 4°C. Store at -20°C.
存储溶液	Constituent: Water
纯度	Whole antiserum
克隆	多克隆
同种型	IgG

### 应用

**The Abpromise guarantee** **Abpromise™** 承诺保证使用ab175799于以下的经测试应用

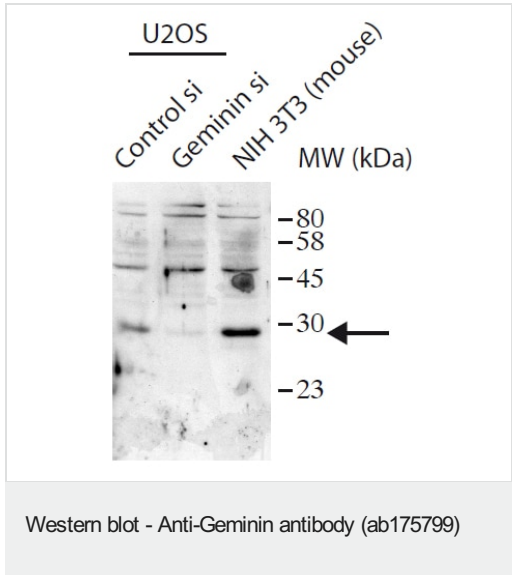
“应用说明”部分 下显示的仅为推荐的起始稀释度;实际最佳的稀释度/浓度应由使用者检定。

应用	Ab评论	说明
WB	★★★★★ (1)	Use at an assay dependent concentration. Predicted molecular weight: 24 kDa.
IP		Use at an assay dependent concentration.
ICC/IF		Use at an assay dependent concentration.
IHC-P		1/1000.

靶标

功能	Inhibits DNA replication by preventing the incorporation of MCM complex into prereplication complex (pre-RC). It is degraded during the mitotic phase of the cell cycle. Its destruction at the metaphase-anaphase transition permits replication in the succeeding cell cycle.
序列相似性	Belongs to the geminin family.
发展阶段	Absent during G1 phase, accumulates during S, G2, and M phases, and disappears at the time of the metaphase-anaphase transition.

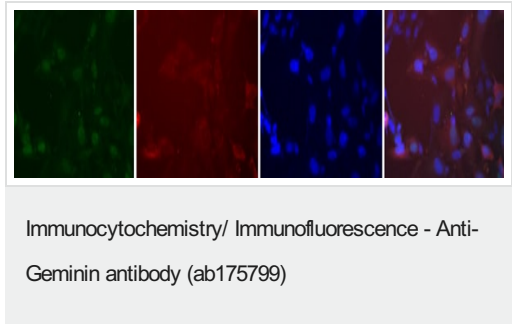
图片



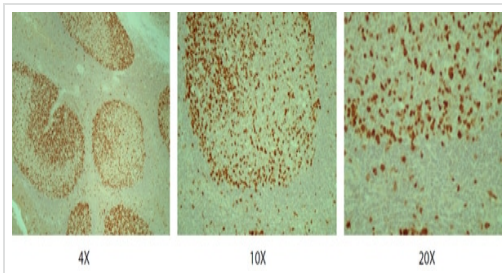
All lanes : Anti-Geminin antibody (ab175799)

- Lane 1 : U2OS (Control si)
- Lane 2 : U2OS (Geminin si)
- Lane 3 : NIH 3T3 cell lysate at 40 µg

Predicted band size: 24 kDa

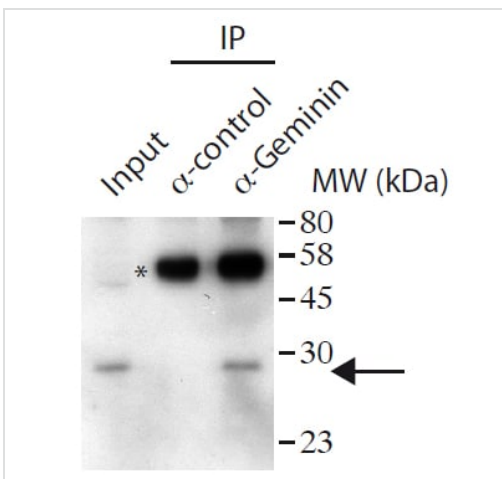


Immunocytochemistry/Immunofluorescence analysis of U2OS cells labelling Geminin with ab175799 at 1:1000. Cells were fixed with PFA and permeabilized with methanol for 2 minutes. Cells were incubated with the primary anitbody overnight at room temperature. From left to right - Geminin, CyclinB, DAPI, Merge.



Immunohistochemistry (Formalin/PFA-fixed paraffin-embedded sections) - Anti-Geminin antibody (ab175799)

Immunohistochemistry (formalin/PFA-fixed paraffin-embedded) analysis of Human lymphoid tissue labelling Geminin with ab175799 at 1:1000. Antigen retrieval was by microwave boiling for 7 minutes in 10mM TrisHCl, pH9. Left - 4X, Middle - 10X, Right - 20X.



Immunoprecipitation - Anti-Geminin antibody (ab175799)

Immunoprecipitation analysis of U2OS cells labelling Geminin with ab175799. Protein A beads were crosslinked to the serum.

**Please note:** All products are "FOR RESEARCH USE ONLY. NOT FOR USE IN DIAGNOSTIC PROCEDURES"

### Our Abpromise to you: Quality guaranteed and expert technical support

- Replacement or refund for products not performing as stated on the datasheet
- Valid for 12 months from date of delivery
- Response to your inquiry within 24 hours
- We provide support in Chinese, English, French, German, Japanese and Spanish
- Extensive multi-media technical resources to help you
- We investigate all quality concerns to ensure our products perform to the highest standards

If the product does not perform as described on this datasheet, we will offer a refund or replacement. For full details of the Abpromise, please visit <https://www.abcam.cn/abpromise> or contact our technical team.

### Terms and conditions

- Guarantee only valid for products bought direct from Abcam or one of our authorized distributors