

Anti-GDF11 + GDF8/Myostatin antibody [EPR4567(2)] ab124721

重组 RabMAb

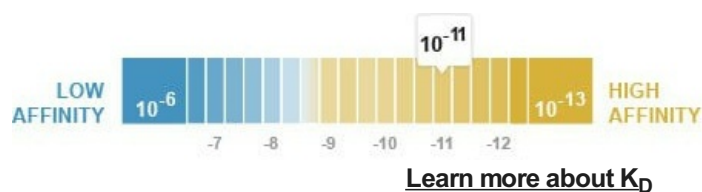
★★★★☆ **6 Abreviews** **30 References** **7 图像**

概述

产品名称	Anti-GDF11 + GDF8/Myostatin抗体[EPR4567(2)]
描述	兔单克隆抗体[EPR4567(2)] to GDF11 + GDF8/Myostatin
宿主	Rabbit
经测试应用	适用于: Flow Cyt (Intra), ICC/IF, WB, IHC-P
种属反应性	与反应: Mouse, Rat, Human
免疫原	Synthetic peptide within Human GDF11 + GDF8/Myostatin aa 350 to the C-terminus. The exact sequence is proprietary. Database link: O95390
阳性对照	WB: HeLa, HEK293 and C6 cell lysate and human heart tissue lysate. C2C12 cell lysate. IHC-P: Human colon adenocarcinoma and cerebral cortex tissues. ICC/IF: A549 cells.
常规说明	This product is a recombinant monoclonal antibody, which offers several advantages including: <ul style="list-style-type: none"> - High batch-to-batch consistency and reproducibility - Improved sensitivity and specificity - Long-term security of supply - Animal-free production For more information see here . Our RabMAb® technology is a patented hybridoma-based technology for making rabbit monoclonal antibodies. For details on our patents, please refer to RabMAb® patents .

性能

形式	Liquid
存放说明	Shipped at 4°C. Store at +4°C short term (1-2 weeks). Upon delivery aliquot. Store at -20°C. Stable for 12 months at -20°C.
解离常数 (K _D)	K _D = 6.40 x 10 ⁻¹¹ M



存储溶液	pH: 7.20 Preservative: 0.01% Sodium azide Constituents: 40% Glycerol (glycerin, glycerine), 0.05% BSA, 59% PBS
纯度	Protein A purified
克隆	单克隆
克隆编号	EPR4567(2)
同种型	IgG

应用

The Abpromise guarantee **Abpromise™**承诺保证使用ab124721于以下的经测试应用

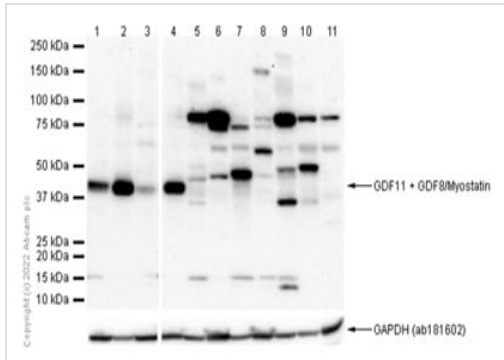
“应用说明”部分 下显示的仅为推荐的起始稀释度;实际最佳的稀释度/浓度应由使用者检定。

应用	Ab评论	说明
Flow Cyt (Intra)		Use at an assay dependent concentration. Purified format.
ICC/IF		1/250.
WB	★★★★★ (1)	1/1000. Detects a band of approximately 45 kDa (predicted molecular weight: 45 kDa).
IHC-P	★★★★★ (4)	1/1000 - 1/2500. Perform heat mediated antigen retrieval with Tris/EDTA buffer pH 9.0 before commencing with IHC staining protocol. See <u>IHC antigen retrieval protocols.</u> For unpurified use at 1/500 - 1/1000.

靶标

相关性	O95390: Function - Secreted signal that acts globally to specify positional identity along the anterior/posterior axis during development. Play critical roles in patterning both mesodermal and neural tissues and in establishing the skeletal pattern. O14793: Function - Acts specifically as a negative regulator of skeletal muscle growth.
-----	---

图片



Western blot - Anti-GDF11 + GDF8/Myostatin antibody [EPR4567(2)] (ab124721)

All lanes : Anti-GDF11 + GDF8/Myostatin antibody [EPR4567(2)] (ab124721) at 1/1000 dilution

Lane 1 : HeLa (Human cervix adenocarcinoma epithelial cell) whole cell lysate

Lane 2 : HEK-293 (Human embryonic kidney epithelial cell) whole cell lysate

Lane 3 : C2C12 (Mouse myoblasts myoblast) whole cell lysate

Lane 4 : C6 (Rat glial tumor glial cell) whole cell lysate

Lane 5 : Rat liver lysate

Lane 6 : Rat heart lysate

Lane 7 : Rat kidney lysate

Lane 8 : Mouse brain lysate

Lane 9 : Mouse liver lysate

Lane 10 : Human liver lysate

Lane 11 : Human skeletal muscle lysate

Lysates/proteins at 20 µg per lane.

Secondary

All lanes : Goat Anti-Rabbit IgG (HRP) with minimal cross-reactivity with human IgG at 1/2000 dilution

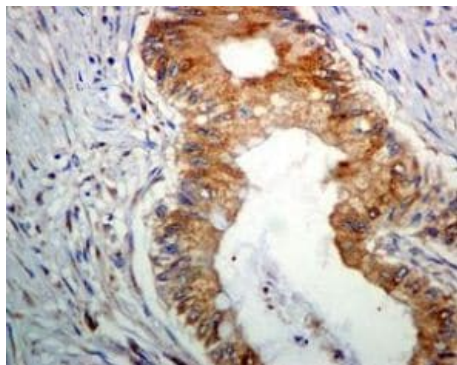
Predicted band size: 45 kDa

Observed band size: 45 kDa

Exposure time: 180 seconds

Blocking and diluting buffer: 5% NFDM/TBST

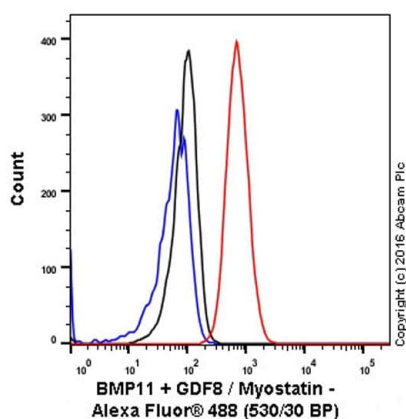
This antibody is unsuitable to detect tissue samples.



Immunohistochemistry (Formalin/PFA-fixed paraffin-embedded sections) - Anti-GDF11 + GDF8/Myostatin antibody [EPR4567(2)] (ab124721)

Immunohistochemistry (Formalin/PFA-fixed paraffin-embedded sections) analysis of human colon adenocarcinoma tissue labelling BMP11 + GDF8/Myostatin with unpurified ab124721 at 1/500 dilution.

Perform heat mediated antigen retrieval with Tris/EDTA buffer pH 9.0 before commencing with IHC staining protocol.

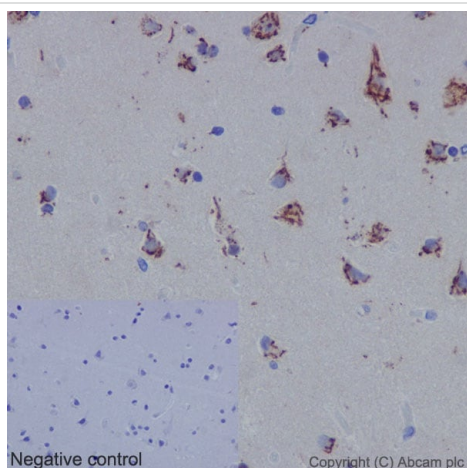


Flow Cytometry (Intracellular) - Anti-GDF11 + GDF8/Myostatin antibody [EPR4567(2)] (ab124721)

ab124721 staining GDF11 + GDF8/Myostatin in the human cell line HeLa (human cervix adenocarcinoma) by intracellular flow cytometry. Cells were fixed with 4% paraformaldehyde, permeabilised with 90% methanol and the sample was incubated with the primary antibody at a dilution of 1/250. A goat anti rabbit IgG (Alexa Fluor® 488) at a dilution of 1/2000 was used as the secondary antibody.

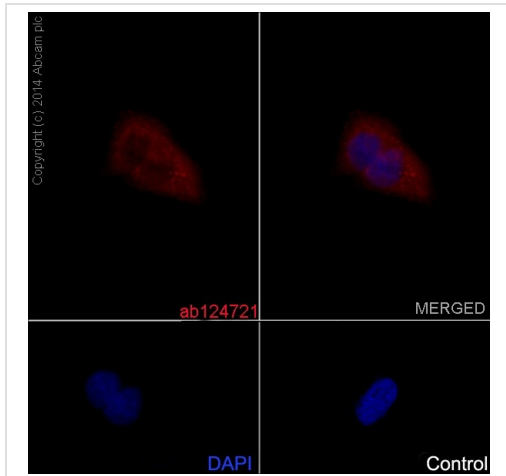
Isootype control: Rabbit monoclonal IgG (Black)

Unlabelled control: Cell without incubation with primary antibody and secondary antibody (Blue)



Immunohistochemistry (Formalin/PFA-fixed paraffin-embedded sections) - Anti-GDF11 + GDF8/Myostatin antibody [EPR4567(2)] (ab124721)

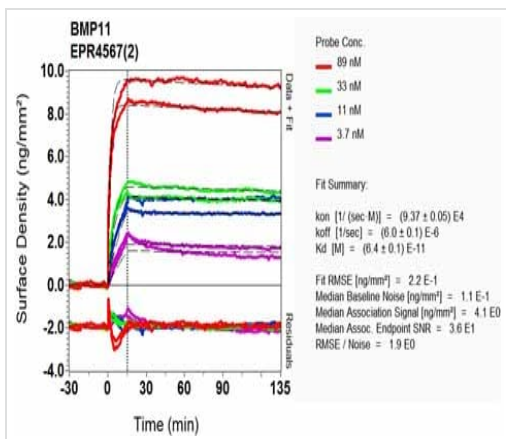
Immunohistochemistry (Formalin/PFA-fixed paraffin-embedded sections) analysis of human cerebral cortex tissue labelling BMP11 + GDF8/Myostatin with purified ab124721 at 1/2500. Heat mediated antigen retrieval was performed using Tris/EDTA buffer pH 9. A prediluted HRP-polymer conjugated anti-rabbit IgG was used as the secondary antibody. Negative control using PBS instead of primary antibody. Counterstained with hematoxylin.



Immunocytochemistry/ Immunofluorescence - Anti-GDF11 + GDF8/Myostatin antibody [EPR4567(2)] (ab124721)

Immunocytochemistry/Immunofluorescence analysis of A549 cells labelling BMP11 + GDF8/Myostatin with purified ab124721 at 1/250. Cells were fixed with 4% paraformaldehyde and permeabilized with 0.1% triton X-100. **ab150078**, an Alexa Fluor[®] 555-conjugated goat anti-rabbit IgG (1/500) was used as the secondary antibody. DAPI (blue) was used as the nuclear counterstain.

Control: primary antibody (1/250) and secondary antibody, **ab150113**, an Alexa Fluor[®] 488-conjugated goat anti-mouse IgG (1/500).



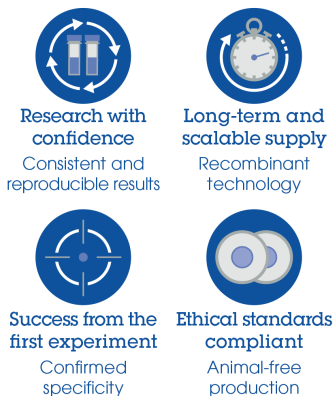
SPR Scanning - Anti-GDF11 + GDF8/Myostatin antibody [EPR4567(2)] (ab124721)

Equilibrium dissociation constant (K_D)

Learn more about K_D

[Click here to learn more about \$K_D\$](#)

Why choose a recombinant antibody?



Anti-GDF11 + GDF8/Myostatin antibody [EPR4567(2)] (ab124721)

Please note: All products are "FOR RESEARCH USE ONLY. NOT FOR USE IN DIAGNOSTIC PROCEDURES"

Our Abpromise to you: Quality guaranteed and expert technical support

- Replacement or refund for products not performing as stated on the datasheet
- Valid for 12 months from date of delivery
- Response to your inquiry within 24 hours

- We provide support in Chinese, English, French, German, Japanese and Spanish
- Extensive multi-media technical resources to help you
- We investigate all quality concerns to ensure our products perform to the highest standards

If the product does not perform as described on this datasheet, we will offer a refund or replacement. For full details of the Abpromise, please visit <https://www.abcam.cn/abpromise> or contact our technical team.

Terms and conditions

- Guarantee only valid for products bought direct from Abcam or one of our authorized distributors