

Anti-GCSF Receptor antibody [EPR8957] ab156878

重组 RabMAb

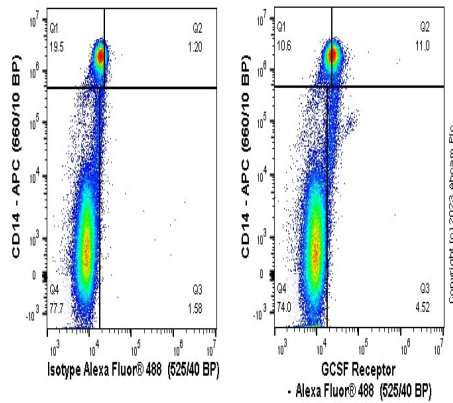
2 References 6 图像

概述

产品名称	Anti-GCSF Receptor抗体[EPR8957]
描述	兔单克隆抗体[EPR8957] to GCSF Receptor
宿主	Rabbit
经测试应用	适用于: Flow Cyt (Intra), WB, Indirect ELISA 不适用于: ICC/IF, IHC-P or IP
种属反应性	与反应: Human
免疫原	Synthetic peptide. This information is proprietary to Abcam and/or its suppliers.
阳性对照	Human placenta extract, NCCIT cell lysate, Caco-2 cell lysate Flow cyto(intra): Human PBMCs
常规说明	This product is a recombinant monoclonal antibody, which offers several advantages including: <ul style="list-style-type: none">- High batch-to-batch consistency and reproducibility- Improved sensitivity and specificity- Long-term security of supply- Animal-free production For more information see here . Our RabMAb [®] technology is a patented hybridoma-based technology for making rabbit monoclonal antibodies. For details on our patents, please refer to RabMAb[®] patents . Mouse, Rat: We have preliminary internal testing data to indicate this antibody may not react with these species. Please contact us for more information.

性能

形式	Liquid
存放说明	Shipped at 4°C. Store at -20°C.
存储溶液	pH: 7.2 Preservative: 0.01% Sodium azide Constituents: 9% PBS, 40% Glycerol (glycerin, glycerine), 0.05% BSA, 50% Tissue culture supernatant
纯度	Tissue culture supernatant
克隆	单克隆

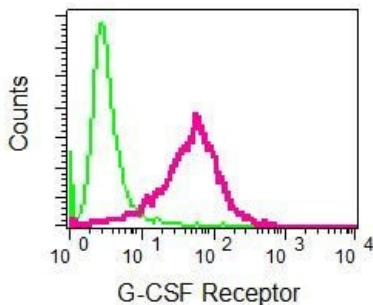


Flow Cytometry (Intracellular) - Anti-GCSF Receptor antibody [EPR8957] (ab156878)

Flow cytometry staining of human peripheral blood mononuclear cells (PBMCs) with ab156878 (right) or Recombinant Rabbit IgG, monoclonal [EPR25A] - Isotype Control (left). Cells were fixed and permeabilised with BD Cytofix/Cytoperm™ for 20 min. PBMCs were incubated for 30 min at 4°C in 1x PBS containing 10 µg/ml human IgG and 10 % normal goat serum to block FC receptors and non-specific protein-protein interaction followed by ab156878 or Recombinant Rabbit IgG, monoclonal [EPR25A] - Isotype Control (1x 10⁶ in 100 µl at 0.2 µg/ml (1/8500)) for 30 min at 4°C . The cells were simultaneously stained with CD14.

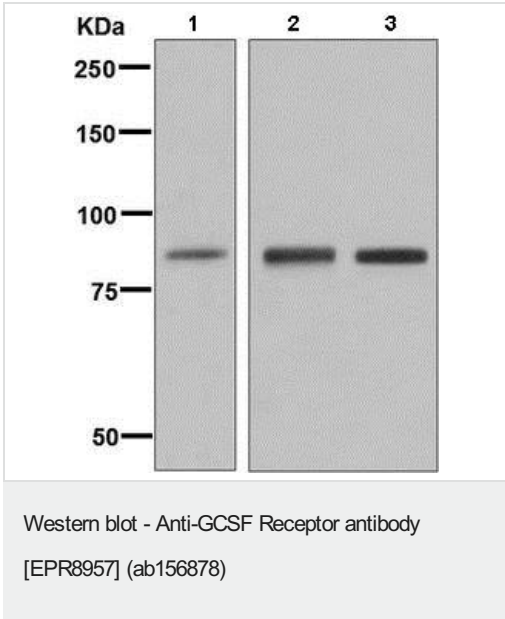
The secondary antibody Goat Anti-Rabbit IgG H&L (Alexa Fluor® 488) preadsorbed was incubated at 1/4000 for 30min at 4°C

Acquisition of >30000 events were collected using a 50 mW Blue laser (488nm) and 525/40 bandpass filter. Events were gated on viable cells.



Flow Cytometry (Intracellular) - Anti-GCSF Receptor antibody [EPR8957] (ab156878)

Intracellular flow cytometric analysis of permeabilized NCCIT cells labeling GCSF Receptor using ab156878 antibody at a dilution of 1/500 (red) or a rabbit IgG (negative) (green).



All lanes : Anti-GCSF Receptor antibody [EPR8957] (ab156878) at 1/1000 dilution

Lane 1 : Human placenta extract

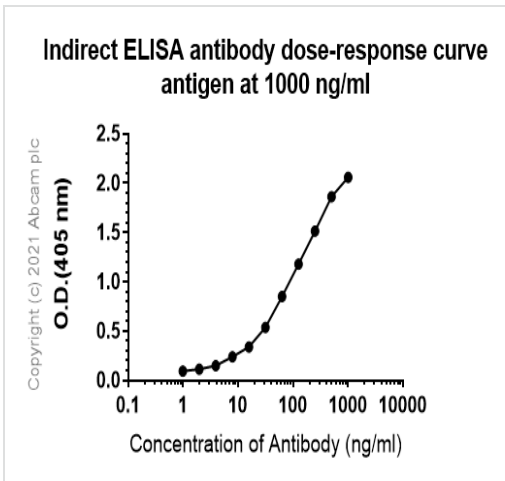
Lane 2 : NCCIT cell lysate

Lane 3 : Caco-2 cell lysate

Lysates/proteins at 10 µg per lane.

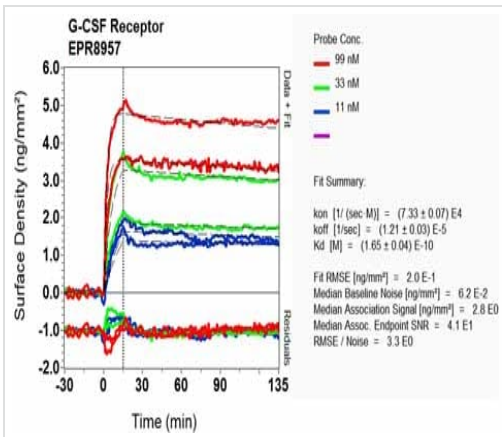
Developed using the ECL technique.

Predicted band size: 92 kDa



ELISA analysis of GCSF Receptor recombinant protein at 1000 ng/ml with ab156878. An Alkaline Phosphatase-conjugated AffiniPure Goat Anti-Rabbit IgG (H+L) at 1/2500 was used as the secondary antibody

Indirect ELISA - Anti-GCSF Receptor antibody [EPR8957] (ab156878)



OI-RD Scanning - Anti-GCSF Receptor antibody
 [EPR8957] (ab156878)

Equilibrium dissociation constant (K_D)

Learn more about K_D

[Click here to learn more about \$K_D\$](#)

Why choose a recombinant antibody?

Research with confidence
 Consistent and reproducible results

Long-term and scalable supply
 Recombinant technology

Success from the first experiment
 Confirmed specificity

Ethical standards compliant
 Animal-free production

Anti-GCSF Receptor antibody [EPR8957]
 (ab156878)

Please note: All products are "FOR RESEARCH USE ONLY. NOT FOR USE IN DIAGNOSTIC PROCEDURES"

Our Abpromise to you: Quality guaranteed and expert technical support

- Replacement or refund for products not performing as stated on the datasheet
- Valid for 12 months from date of delivery
- Response to your inquiry within 24 hours
- We provide support in Chinese, English, French, German, Japanese and Spanish
- Extensive multi-media technical resources to help you

- We investigate all quality concerns to ensure our products perform to the highest standards

If the product does not perform as described on this datasheet, we will offer a refund or replacement. For full details of the Abpromise, please visit <https://www.abcam.cn/abpromise> or contact our technical team.

Terms and conditions

- Guarantee only valid for products bought direct from Abcam or one of our authorized distributors