


# Anti-GCLM antibody ab154017

**1 References**   **3 图像**

### 概述

产品名称	Anti-GCLM抗体
描述	兔多克隆抗体to GCLM
宿主	Rabbit
经测试应用	适用于: WB, IHC-P, ICC/IF
种属反应性	与反应: Human 预测可用于: Mouse, Rat, Cow 
免疫原	Synthetic peptide, corresponding to a region within amino acids 29-120 of Human GCLM (Uniprot ID: P48507).
阳性对照	H1299, 293T, A431, HeLa, HepG2, MOLT4 and Raji whole cell lysates; Human BT474 xenograft tissue; HeLa cells.
常规说明	<p>The Life Science industry has been in the grips of a reproducibility crisis for a number of years. Abcam is leading the way in addressing this with our range of recombinant monoclonal antibodies and knockout edited cell lines for gold-standard validation. Please check that this product meets your needs before purchasing.</p> <p>If you have any questions, special requirements or concerns, please send us an inquiry and/or contact our Support team ahead of purchase. Recommended alternatives for this product can be found below, along with publications, customer reviews and Q&amp;As</p>

### 性能

形式	Liquid
存放说明	Shipped at 4°C. Upon delivery aliquot. Store at -20°C or -80°C. Avoid freeze / thaw cycle.
存储溶液	<p>pH: 7.00</p> <p>Preservative: 0.01% Thimerosal (merthiolate)</p> <p>Constituents: 1.21% Tris, 0.75% Glycine, 10% Glycerol (glycerin, glycerine)</p>
纯度	Immunogen affinity purified
克隆	多克隆
同种型	IgG

### 应用

## The Abpromise guarantee

**Abpromise™** 承诺保证使用ab154017于以下的经测试应用

“应用说明”部分 下显示的仅为推荐的起始稀释度;实际最佳的稀释度/浓度应由使用者检定。

应用	Ab评论	说明
WB		1/1000 - 1/10000. Predicted molecular weight: 31 kDa.
IHC-P		1/100 - 1/1000. Perform heat mediated antigen retrieval with citrate buffer pH 6 before commencing with IHC staining protocol.
ICC/IF		1/100 - 1/1000.

## 靶标

### 组织特异性

In all tissues examined. Highest levels in skeletal muscle.

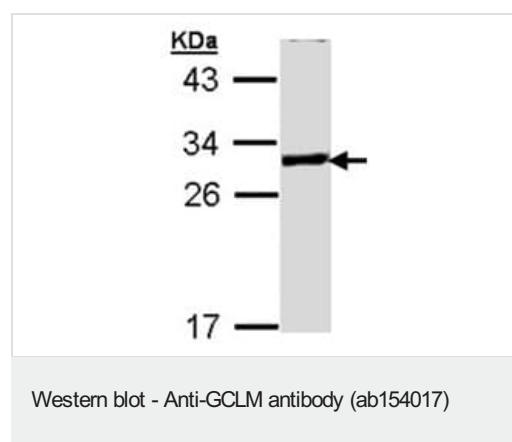
### 通路

Sulfur metabolism; glutathione biosynthesis; glutathione from L-cysteine and L-glutamate: step 1/2.

### 序列相似性

Belongs to the aldo/keto reductase family. Glutamate--cysteine ligase light chain subfamily.

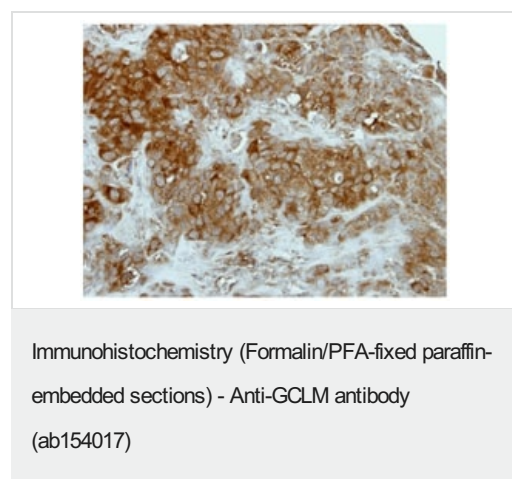
## 图片



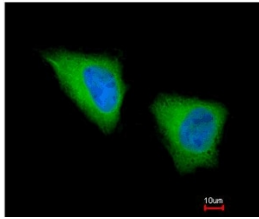
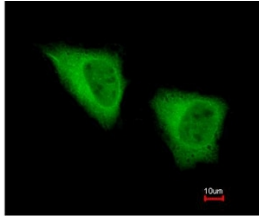
Anti-GCLM antibody (ab154017) at 1/5000 dilution + HT1299 whole cell lysate at 30 µg

**Predicted band size:** 31 kDa

12% SDS PAGE



Immunohistochemical analysis of paraffin-embedded Human BT474 xenograft tissue labeling GCLM with ab154017 at 1/500 dilution.



Immunocytochemistry/ Immunofluorescence - Anti-GCLM antibody (ab154017)

Immunofluorescent analysis of paraformaldehyde-fixed HeLa cells labeling GCLM with ab154017 at 1/200 dilution. Lower image is merged with DNA probe.

**Please note:** All products are "FOR RESEARCH USE ONLY. NOT FOR USE IN DIAGNOSTIC PROCEDURES"

### Our Abpromise to you: Quality guaranteed and expert technical support

- Replacement or refund for products not performing as stated on the datasheet
- Valid for 12 months from date of delivery
- Response to your inquiry within 24 hours
- We provide support in Chinese, English, French, German, Japanese and Spanish
- Extensive multi-media technical resources to help you
- We investigate all quality concerns to ensure our products perform to the highest standards

If the product does not perform as described on this datasheet, we will offer a refund or replacement. For full details of the Abpromise, please visit <https://www.abcam.cn/abpromise> or contact our technical team.

### Terms and conditions

- Guarantee only valid for products bought direct from Abcam or one of our authorized distributors