

Anti-GCLC antibody [EPR20078] ab207777

重组 RabMAb

7 References [7 图像](#)

概述

产品名称	Anti-GCLC抗体[EPR20078]
描述	兔单克隆抗体[EPR20078] to GCLC
宿主	Rabbit
经测试应用	适用于: Flow Cyt (Intra), IP, ICC/IF, WB
种属反应性	与反应: Mouse, Rat, Human
免疫原	Recombinant fragment. This information is proprietary to Abcam and/or its suppliers.
阳性对照	WB: HepG2, MCF7, A549 C6 PC-12 and RAW 264.7 whole cell lysates; human lung and fetal liver lysates; rat liver lysate; mouse liver and spleen lysates. ICC/IF: HpeB2 and PC-12 cells. Flow Cyt (intra): PC-12 cells. IP: HepG2 whole cell lysate.
常规说明	<p>This product is a recombinant monoclonal antibody, which offers several advantages including:</p> <ul style="list-style-type: none"> - High batch-to-batch consistency and reproducibility - Improved sensitivity and specificity - Long-term security of supply - Animal-free production <p>For more information see here.</p> <p>Our RabMAb[®] technology is a patented hybridoma-based technology for making rabbit monoclonal antibodies. For details on our patents, please refer to RabMAb[®] patents.</p>

性能

形式	Liquid
存放说明	Shipped at 4°C. Store at +4°C short term (1-2 weeks). Upon delivery aliquot. Store at -20°C long term. Avoid freeze / thaw cycle.
存储溶液	<p>pH: 7.2</p> <p>Preservative: 0.01% Sodium azide</p> <p>Constituents: 59% PBS, 40% Glycerol, 0.05% BSA</p>
纯度	Protein A purified
克隆	单克隆
克隆编号	EPR20078

同种型IgG

应用

The Abpromise guarantee **Abpromise™**承诺保证使用ab207777于以下的经测试应用

“应用说明”部分 下显示的仅为推荐的起始稀释度;实际最佳的稀释度/浓度应由使用者检定。

应用	Ab评论	说明
Flow Cyt (Intra)		1/60.
IP		1/40.
ICC/IF		1/100.
WB		1/1000. Detects a band of approximately 73 kDa (predicted molecular weight: 73 kDa).

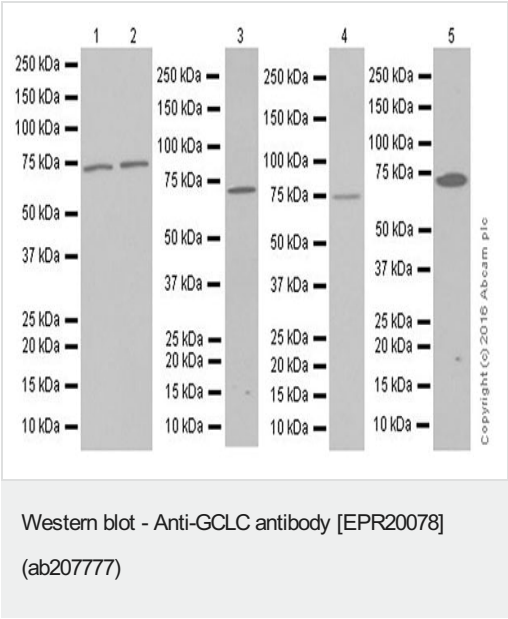
靶标

通路Sulfur metabolism; glutathione biosynthesis; glutathione from L-cysteine and L-glutamate: step 1/2.

疾病相关Defects in GCLC are the cause of hemolytic anemia (HAGGSD) [MIM:230450].

序列相似性Belongs to the glutamate--cysteine ligase type 3 family.

图片



Lanes 1-2 : Anti-GCLC antibody [EPR20078] (ab207777) at 1/2000 dilution

Lanes 3-5 : Anti-GCLC antibody [EPR20078] (ab207777) at 1/1000 dilution

Lane 1 : HepG2 (Human liver hepatocellular carcinoma cell line) whole cell lysate

Lane 2 : MCF7 (Human breast adenocarcinoma cell line) whole cell lysate

Lane 3 : A549 (Human lung carcinoma cell line) whole cell lysate

Lane 4 : Human lung lysate

Lane 5 : Human fetal liver lysate

Lysates/proteins at 10 µg per lane.

Secondary

Lanes 1-3 : Goat Anti-Rabbit IgG H&L (HRP) (**ab97051**) at

1/100000 dilution

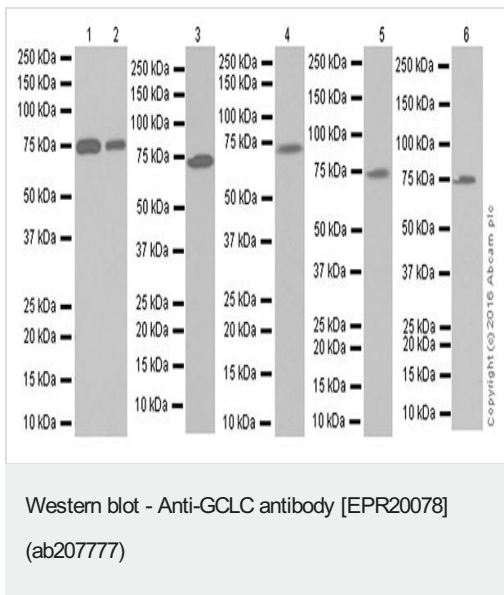
Lanes 4-5 : Goat Anti-Rabbit IgG Peroxidase Conjugate, specific to the non-reduced form of IgG at 1/10000 dilution

Predicted band size: 73 kDa

Observed band size: 73 kDa

Exposure time: 3 minutes

Blocking/Dilution buffer: 5% NFDm/TBST.



Lanes 1-2 : Anti-GCLC antibody [EPR20078] (ab207777) at 1/2000 dilution

Lanes 3-6 : Anti-GCLC antibody [EPR20078] (ab207777) at 1/1000 dilution

Lane 1 : C6 (Rat glial tumor cell line) whole cell lysate

Lane 2 : PC-12 (Rat adrenal gland pheochromocytoma cell line) whole cell lysate

Lane 3 : RAW 264.7 (Mouse macrophage cell line transformed with Abelson murine leukemia virus) whole cell lysate

Lane 4 : Rat liver lysate

Lane 5 : Mouse liver lysate

Lane 6 : Mouse spleen lysate

Lysates/proteins at 10 µg per lane.

Secondary

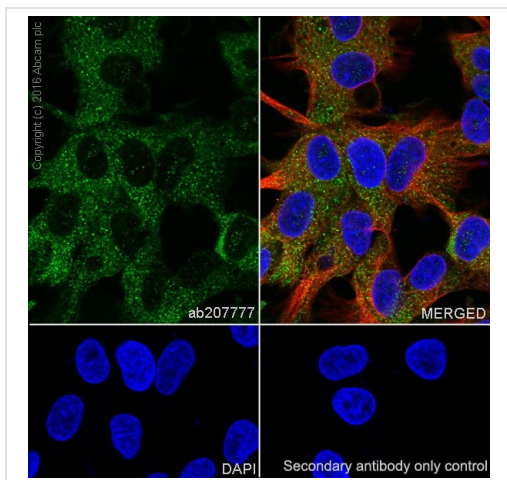
All lanes : Goat Anti-Rabbit IgG H&L (HRP) ([ab97051](#)) at 1/100000 dilution

Predicted band size: 73 kDa

Observed band size: 73 kDa

Blocking/Dilution buffer: 5% NFDm/TBST.

Exposure time: Lane 1-3: 3 minutes; Lane 4: 15 seconds; Lane 5: 3 seconds; Lane 6: 5 seconds.

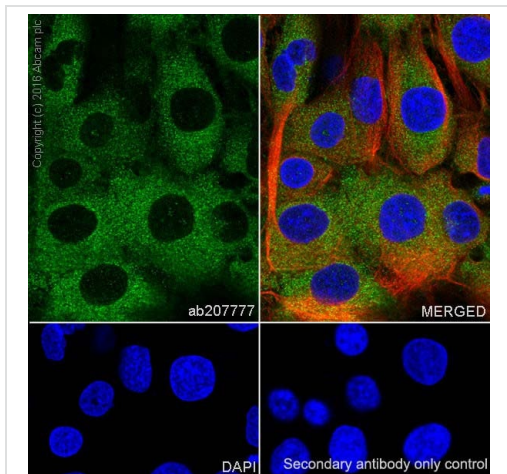


Immunocytochemistry/ Immunofluorescence - Anti-GCLC antibody [EPR20078] (ab207777)

Immunofluorescent analysis of 4% paraformaldehyde-fixed, 0.1% Triton X-100 permeabilized HepG2 (Human liver hepatocellular carcinoma cell line) cells labeling GCLC with ab207777 at 1/100 dilution, followed by Goat Anti-Rabbit IgG H&L (Alexa Fluor® 488) (**ab150077**) secondary antibody at 1/1000 dilution (green). Confocal image showing cytoplasmic and weak nuclear staining on HepG2 cell line. The nuclear counterstain is DAPI (blue).

Tubulin is detected with Anti-alpha Tubulin antibody [DM1A] - Microtubule Marker (Alexa Fluor® 594) (**ab195889**) at 1/200 dilution (red).

Secondary antibody only control: Used PBS instead of primary antibody, secondary antibody is Goat Anti-Rabbit IgG H&L (Alexa Fluor® 488) (**ab150077**) at 1/1000 dilution.

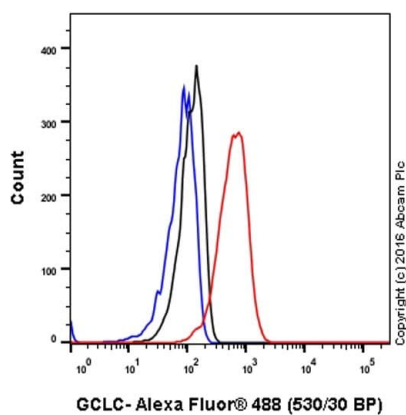


Immunocytochemistry/ Immunofluorescence - Anti-GCLC antibody [EPR20078] (ab207777)

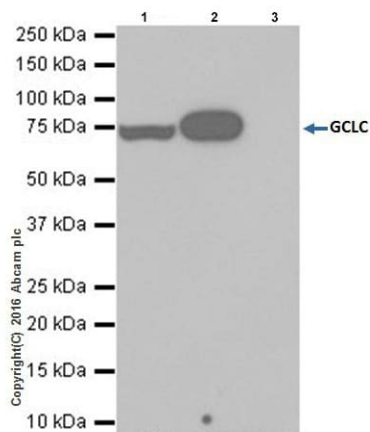
Immunofluorescent analysis of 4% paraformaldehyde-fixed, 0.1% Triton X-100 permeabilized PC-12 (Rat adrenal gland pheochromocytoma cell line) cells labeling GCLC with ab207777 at 1/100 dilution, followed by Goat Anti-Rabbit IgG H&L (Alexa Fluor® 488) (**ab150077**) secondary antibody at 1/1000 dilution (green). Confocal image showing cytoplasmic and weak nuclear staining on PC-12 cell line. The nuclear counterstain is DAPI (blue).

Tubulin is detected with Anti-alpha Tubulin antibody [DM1A] - Microtubule Marker (Alexa Fluor® 594) (**ab195889**) at 1/200 dilution (red).

Secondary antibody only control: Used PBS instead of primary antibody, secondary antibody is Goat Anti-Rabbit IgG H&L (Alexa Fluor® 488) (**ab150077**) at 1/1000 dilution.



Flow Cytometry (Intracellular) - Anti-GCLC antibody
[EPR20078] (ab207777)



Immunoprecipitation - Anti-GCLC antibody
[EPR20078] (ab207777)

Intracellular flow cytometric analysis of 4% paraformaldehyde-fixed PC-12 (Rat adrenal gland pheochromocytoma cell line) cells labeling GCLC with ab207777 at 1/60 dilution (red) compared with a Rabbit IgG, monoclonal [EPR25A] - Isotype Control (**ab172730**; black) and an unlabelled control (cells without incubation with primary antibody and secondary antibody; blue). Goat Anti-Rabbit IgG (Alexa Fluor® 488) at 1/2000 dilution was used as the secondary antibody.

GCLC was immunoprecipitated from 0.35 mg of HepG2 (Human liver hepatocellular carcinoma cell line) whole cell lysate with ab207777 at 1/40 dilution.

Western blot was performed from the immunoprecipitate using ab207777 at 1/1000 dilution.

VeriBLOT for IP Detection Reagent (HRP) (**ab131366**), was used for detection at 1/1000 dilution.

Lane 1: HepG2 whole cell lysate 10µg (Input).

Lane 2: ab207777 IP in HepG2 whole cell lysate.

Lane 3: Rabbit IgG, monoclonal [EPR25A] - Isotype Control (**ab172730**) instead of ab207777 in HepG2 whole cell lysate.

Blocking and dilution buffer and concentration: 5% NFDM/TBST.

Exposure time: 30 seconds.

Why choose a recombinant antibody?



Research with confidence
Consistent and reproducible results



Long-term and scalable supply
Recombinant technology



Success from the first experiment
Confirmed specificity



Ethical standards compliant
Animal-free production

Anti-GCLC antibody [EPR20078] (ab207777)

Please note: All products are "FOR RESEARCH USE ONLY. NOT FOR USE IN DIAGNOSTIC PROCEDURES"

Our Abpromise to you: Quality guaranteed and expert technical support

- Replacement or refund for products not performing as stated on the datasheet
- Valid for 12 months from date of delivery
- Response to your inquiry within 24 hours

- We provide support in Chinese, English, French, German, Japanese and Spanish
- Extensive multi-media technical resources to help you
- We investigate all quality concerns to ensure our products perform to the highest standards

If the product does not perform as described on this datasheet, we will offer a refund or replacement. For full details of the Abpromise, please visit <https://www.abcam.cn/abpromise> or contact our technical team.

Terms and conditions

- Guarantee only valid for products bought direct from Abcam or one of our authorized distributors