


### Anti-GCDH/GCD antibody [EPR14864(B)] ab182152

**重组 RabMAb**

#### 4 图像

#### 概述

产品名称	Anti-GCDH/GCD抗体[EPR14864(B)]
描述	兔单克隆抗体[EPR14864(B)] to GCDH/GCD
宿主	Rabbit
经测试应用	<b>适用于:</b> WB, Flow Cyt (Intra)
种属反应性	<b>与反应:</b> Human <b>预测可用于:</b> Mouse, Rat 
免疫原	Synthetic peptide. This information is proprietary to Abcam and/or its suppliers.
阳性对照	Human fetal liver and HepG2 cell lysates; PC3 cells.
常规说明	This product is a recombinant monoclonal antibody, which offers several advantages including: <ul style="list-style-type: none"> <li>- High batch-to-batch consistency and reproducibility</li> <li>- Improved sensitivity and specificity</li> <li>- Long-term security of supply</li> <li>- Animal-free production</li> </ul> For more information <a href="#">see here</a> . Our RabMAb <sup>®</sup> technology is a patented hybridoma-based technology for making rabbit monoclonal antibodies. For details on our patents, please refer to <a href="#">RabMAb<sup>®</sup> patents</a> .

#### 性能

形式	Liquid
存放说明	Shipped at 4°C. Store at +4°C short term (1-2 weeks). Upon delivery aliquot. Store at -20°C long term. Avoid freeze / thaw cycle.
存储溶液	pH: 7.2 Preservative: 0.01% Sodium azide Constituents: 40% Glycerol (glycerin, glycerine), 59% PBS, 0.05% BSA
纯度	Tissue culture supernatant
克隆	单克隆
克隆编号	EPR14864(B)
同种型	IgG

## 应用

### The Abpromise guarantee

**Abpromise™**承诺保证使用ab182152于以下的经测试应用

“应用说明”部分下显示的仅为推荐的起始稀释度;实际最佳的稀释度/浓度应由使用者检定。

应用	Ab评论	说明
WB		1/1000 - 1/10000. Detects a band of approximately 48 kDa (predicted molecular weight: 48 kDa).
Flow Cyt (Intra)		1/80. <b>ab172730</b> - Rabbit monoclonal IgG, is suitable for use as an isotype control with this antibody.

## 靶标

### 功能

Catalyzes the oxidative decarboxylation of glutaryl-CoA to crotonyl-CoA and CO(2) in the degradative pathway of L-lysine, L-hydroxylysine, and L-tryptophan metabolism. It uses electron transfer flavoprotein as its electron acceptor. Isoform Short is inactive.

### 组织特异性

Isoform 1 and isoform 2 are expressed in fibroblasts and liver.

### 通路

Amino-acid metabolism; lysine degradation.  
Amino-acid metabolism; tryptophan metabolism.

### 疾病相关

Defects in GCDH are the cause of glutaric aciduria type 1 (GA1) [MIM:231670]. GA1 is an autosomal recessive metabolic disorder characterized by progressive dystonia and athetosis due to gliosis and neuronal loss in the basal ganglia.

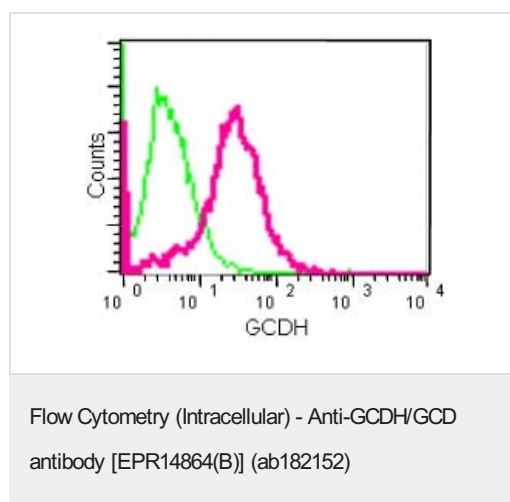
### 序列相似性

Belongs to the acyl-CoA dehydrogenase family.

### 细胞定位

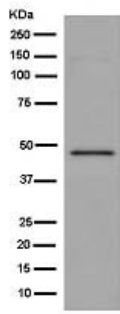
Mitochondrion matrix.

## 图片



Intracellular flow cytometric analysis of PC3 cells

(paraformaldehyde-fixed, 2%) labeling GCDH/GCD with ab182152 at 1/80 dilution (red) or a rabbit IgG (negative) (green), followed by Goat anti rabbit IgG (FITC) secondary at 1/150 dilution.



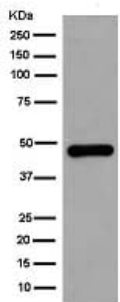
Western blot - Anti-GCDH/GCD antibody  
[EPR14864(B)] (ab182152)

Anti-GCDH/GCD antibody [EPR14864(B)] (ab182152) at 1/5000 dilution + HepG2 cell lysate at 20 µg

**Secondary**

Goat Anti-Rabbit IgG, (H+L), Peroxidase conjugate at 1/1000 dilution

**Predicted band size:** 48 kDa



Western blot - Anti-GCDH/GCD antibody  
[EPR14864(B)] (ab182152)

Anti-GCDH/GCD antibody [EPR14864(B)] (ab182152) at 1/20000 dilution + Human fetal liver lysate at 20 µg

**Secondary**

Goat Anti-Rabbit IgG, (H+L), Peroxidase conjugate at 1/1000 dilution

**Predicted band size:** 48 kDa

Why choose a recombinant antibody?

 <b>Research with confidence</b> Consistent and reproducible results	 <b>Long-term and scalable supply</b> Recombinant technology
 <b>Success from the first experiment</b> Confirmed specificity	 <b>Ethical standards compliant</b> Animal-free production

Anti-GCDH/GCD antibody [EPR14864(B)]  
(ab182152)

**Please note:** All products are "FOR RESEARCH USE ONLY. NOT FOR USE IN DIAGNOSTIC PROCEDURES"

**Our Abpromise to you: Quality guaranteed and expert technical support**

- Replacement or refund for products not performing as stated on the datasheet
- Valid for 12 months from date of delivery
- Response to your inquiry within 24 hours
  
- We provide support in Chinese, English, French, German, Japanese and Spanish
- Extensive multi-media technical resources to help you
- We investigate all quality concerns to ensure our products perform to the highest standards

If the product does not perform as described on this datasheet, we will offer a refund or replacement. For full details of the Abpromise, please visit <https://www.abcam.cn/abpromise> or contact our technical team.

### **Terms and conditions**

---

- Guarantee only valid for products bought direct from Abcam or one of our authorized distributors