

# Anti-GC1q R antibody ab101267

**1 References**   **3 图像**

### 概述

产品名称	Anti-GC1q R抗体
描述	兔多克隆抗体to GC1q R
宿主	Rabbit
经测试应用	适用于: WB, IP, IHC-P
种属反应性	与反应: Mouse, Human 预测可用于: Horse, Chimpanzee, Gorilla, Orangutan, Bat 
免疫原	Immunogen corresponds to a region within amino acids 150-200 of Human GC1q R (NP_001203.1)
常规说明	<p>The Life Science industry has been in the grips of a reproducibility crisis for a number of years. Abcam is leading the way in addressing this with our range of recombinant monoclonal antibodies and knockout edited cell lines for gold-standard validation. Please check that this product meets your needs before purchasing.</p> <p>If you have any questions, special requirements or concerns, please send us an inquiry and/or contact our Support team ahead of purchase. Recommended alternatives for this product can be found below, along with publications, customer reviews and Q&amp;As</p>

### 性能

形式	Liquid
存放说明	Shipped at 4°C. Upon delivery aliquot and store at -20°C. Avoid freeze / thaw cycles.
存储溶液	pH: 7 Preservative: 0.09% Sodium azide Constituent: Tris citrate/phosphate
纯度	Immunogen affinity purified
克隆	多克隆
同种型	IgG

### 应用

The Abpromise guarantee

**Abpromise™** 承诺保证使用ab101267于以下的经测试应用

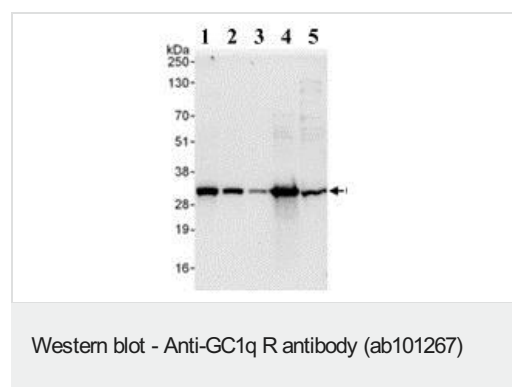
“应用说明”部分 下显示的仅为推荐的起始稀释度;实际最佳的稀释度/浓度应由使用者检定。

应用	Ab评论	说明
WB		1/2000 - 1/10000. Predicted molecular weight: 31 kDa.
IP		Use at 2-5 µg/mg of lysate.
IHC-P		1/500 - 1/2000. Perform heat mediated antigen retrieval with citrate buffer pH 6 before commencing with IHC staining protocol.

## 靶标

功能	Binds to the globular "heads" of C1Q thus inhibiting C1 activation.
序列相似性	Belongs to the MAM33 family.
细胞定位	Mitochondrion matrix. Nucleus. Might also be nuclear in some cell types.

## 图片



**All lanes :** Anti-GC1q R antibody (ab101267) at 0.1 µg/ml

**Lane 1 :** HeLa whole cell lysate at 50 µg/ml

**Lane 2 :** HeLa whole cell lysate at 15 µg/ml

**Lane 3 :** HeLa whole cell lysate at 5 µg/ml

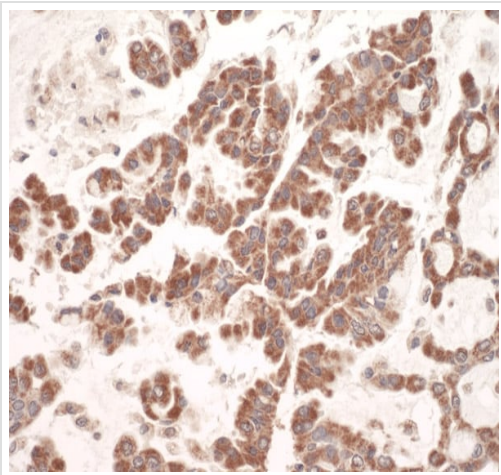
**Lane 4 :** 293T whole cell lysate at 50 µg/ml

**Lane 5 :** NIH3T3 whole cell lysate at 50 µg/ml

Developed using the ECL technique.

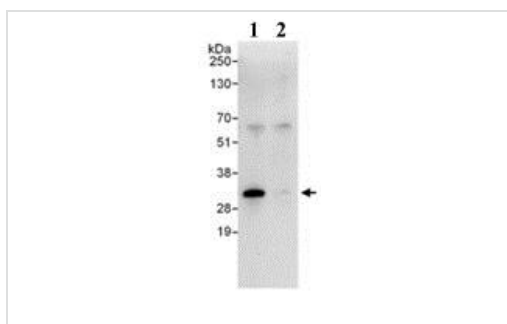
**Predicted band size:** 31 kDa

**Exposure time:** 30 seconds



Immunohistochemistry (Formalin/PFA-fixed paraffin-embedded sections) - Anti-GC1q R antibody (ab101267)

Immunohistochemistry (Formalin/PFA-fixed paraffin-embedded sections) analysis of human lung carcinoma tissue labelling GC1q R with ab101267 at 1/1000 (1µg/ml).



Immunoprecipitation - Anti-GC1q R antibody (ab101267)

Detection of Human GC1q R in 1mg HeLa whole cell lysate (20% of IP loaded) using ab101267 at 3µg/mg of lysate. Further Western Blot detection was performed using ab101267 at 0.4µg/ml.  
Lane 1: ab101267 IP.  
Lane 2: control IgG IP.

**Please note:** All products are "FOR RESEARCH USE ONLY. NOT FOR USE IN DIAGNOSTIC PROCEDURES"

### Our Abpromise to you: Quality guaranteed and expert technical support

- Replacement or refund for products not performing as stated on the datasheet
- Valid for 12 months from date of delivery

- Response to your inquiry within 24 hours
- We provide support in Chinese, English, French, German, Japanese and Spanish
- Extensive multi-media technical resources to help you
- We investigate all quality concerns to ensure our products perform to the highest standards

If the product does not perform as described on this datasheet, we will offer a refund or replacement. For full details of the Abpromise, please visit <https://www.abcam.cn/abpromise> or contact our technical team.

#### **Terms and conditions**

---

- Guarantee only valid for products bought direct from Abcam or one of our authorized distributors