


# Anti-GAPDH antibody [EPR16884] - Loading Control ab181603

**重组** RabMAb

★★★★★ **6 Abreviews** **193 References** **10 图像**

### 概述

产品名称	Anti-GAPDH抗体[EPR16884] - Loading Control
描述	兔单克隆抗体[EPR16884] to GAPDH - Loading Control
宿主	Rabbit
经测试应用	适用于: Flow Cyt (Intra), WB, IHC-P, ICC/IF
种属反应性	与反应: Mouse, Rat, Chicken, Cow, Dog, Human, African green monkey 预测可用于: Monkey 
免疫原	Recombinant fragment. This information is proprietary to Abcam and/or its suppliers.
阳性对照	WB: HeLa, MDBK, COS-1, MDCK, UMNSAH/DF-1, Jurkat, C6 and NIH/3T3 whole cell lysates; Mouse brain and heart lysates; Rat brain, heart, kidney and spleen lysates; Human fetal brain, heart and kidney lysates. IHC-P: Human transitional cell carcinoma of bladder, Mouse spleen and Rat spleen tissues. ICC/IF: HeLa cells. Flow: Jurkat cells.
常规说明	<p>This product is a recombinant monoclonal antibody, which offers several advantages including:</p> <ul style="list-style-type: none"> <li>- High batch-to-batch consistency and reproducibility</li> <li>- Improved sensitivity and specificity</li> <li>- Long-term security of supply</li> <li>- Animal-free production</li> </ul> <p>For more information <a href="#">see here</a>.</p> <p>Our RabMAb<sup>®</sup> technology is a patented hybridoma-based technology for making rabbit monoclonal antibodies. For details on our patents, please refer to <a href="#">RabMAb<sup>®</sup> patents</a>.</p>

### 性能

形式	Liquid
存放说明	Shipped at 4°C. Store at +4°C short term (1-2 weeks). Upon delivery aliquot. Store at -20°C long term. Avoid freeze / thaw cycle.
存储溶液	Preservative: 0.01% Sodium azide Constituents: 59% PBS, 40% Glycerol, 0.05% BSA
纯度	Protein A purified
克隆	单克隆



克隆编号	EPR16884
同种型	IgG

应用

The Abpromise guarantee

Abpromise™承诺保证使用ab181603于以下的经测试应用

“应用说明”部分 下显示的仅为推荐的起始稀释度;实际最佳的稀释度/浓度应由使用者检定。

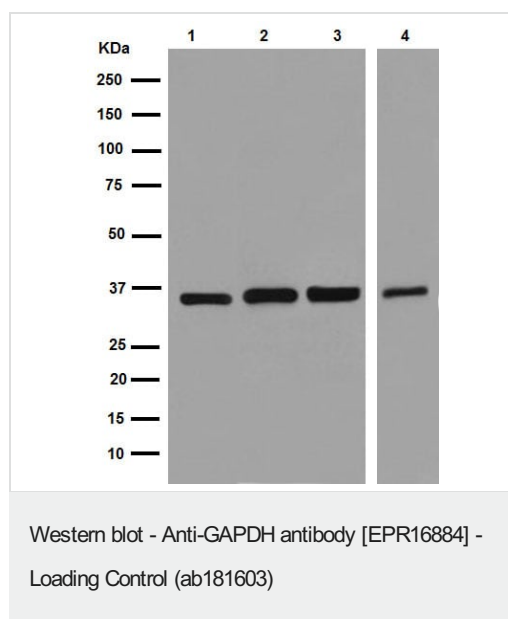
应用	Ab评论	说明
Flow Cyt (Intra)		1/200. <b>ab172730</b> - Rabbit monoclonal IgG, is suitable for use as an isotype control with this antibody.
WB	★★★★★ (3)	1/10000. Detects a band of approximately 36 kDa (predicted molecular weight: 36 kDa).
IHC-P		1/500. Perform heat mediated antigen retrieval with Tris/EDTA buffer pH 9.0 before commencing with IHC staining protocol.
ICC/IF	★★★★☆ (3)	1/250.

靶标

功能	Has both glyceraldehyde-3-phosphate dehydrogenase and nitrosylase activities, thereby playing a role in glycolysis and nuclear functions, respectively. Participates in nuclear events including transcription, RNA transport, DNA replication and apoptosis. Nuclear functions are probably due to the nitrosylase activity that mediates cysteine S-nitrosylation of nuclear target proteins such as SIRT1, HDAC2 and PRKDC (By similarity). Glyceraldehyde-3-phosphate dehydrogenase is a key enzyme in glycolysis that catalyzes the first step of the pathway by converting D-glyceraldehyde 3-phosphate (G3P) into 3-phospho-D-glyceroyl phosphate.
通路	Carbohydrate degradation; glycolysis; pyruvate from D-glyceraldehyde 3-phosphate: step 1/5.
序列相似性	Belongs to the glyceraldehyde-3-phosphate dehydrogenase family.
翻译后修饰	S-nitrosylation of Cys-152 leads to interaction with SIAH1, followed by translocation to the nucleus. ISGylated.
细胞定位	Cytoplasm > cytosol. Nucleus. Cytoplasm > perinuclear region. Membrane. Translocates to the nucleus following S-nitrosylation and interaction with SIAH1, which contains a nuclear localization signal (By similarity). Postnuclear and Perinuclear regions.

图片





**All lanes :** Anti-GAPDH antibody [EPR16884] - Loading Control (ab181603) at 1/10000 dilution

**Lane 1 :** HeLa (Human epithelial cells from cervix adenocarcinoma) whole cell lysates

**Lane 2 :** MDBK (Bovine kidney cell line) whole cell lysates

**Lane 3 :** COS-1 (African green monkey kidney fibroblast-like cell line) whole cell lysates

**Lane 4 :** MDCK (Canine kidney cell line) whole cell lysates

Lysates/proteins at 20 µg per lane.

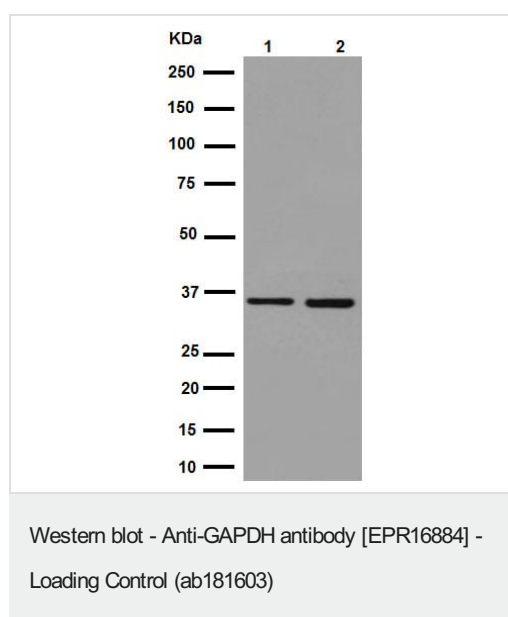
### Secondary

**All lanes :** Goat Anti-Rabbit IgG, (H+L), Peroxidase conjugated at 1/1000 dilution

**Predicted band size:** 36 kDa

**Observed band size:** 36 kDa

Blocking/Dilution buffer: 5% NFDM/TBST.



**All lanes :** Anti-GAPDH antibody [EPR16884] - Loading Control (ab181603) at 1/50000 dilution

**Lane 1 :** UMNSAH/DF-1 (Transformed chicken embryonic fibroblast cells) whole cell lysates

**Lane 2 :** Jurkat (Human T cell leukemia cells from peripheral blood) whole cell lysates

Lysates/proteins at 20 µg per lane.

### Secondary

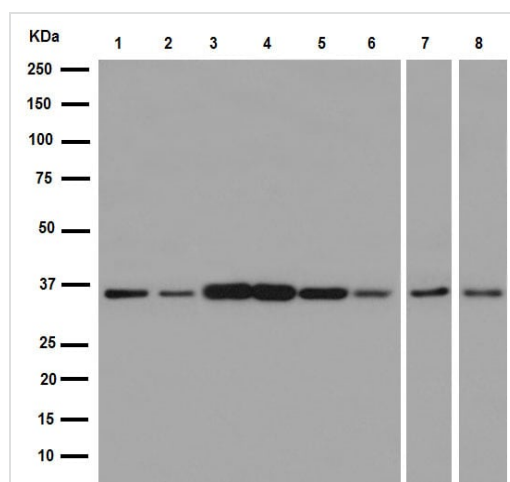
**All lanes :** Goat Anti-Rabbit IgG, (H+L), Peroxidase conjugated at 1/1000 dilution

**Predicted band size:** 36 kDa

**Observed band size:** 36 kDa



Blocking/Dilution buffer: 5% NFDM/TBST.



Western blot - Anti-GAPDH antibody [EPR16884] - Loading Control (ab181603)

**All lanes :** Anti-GAPDH antibody [EPR16884] - Loading Control (ab181603) at 1/10000 dilution

**Lane 1 :** Mouse brain lysate

**Lane 2 :** Mouse heart lysate

**Lane 3 :** Rat brain lysate

**Lane 4 :** Rat heart lysate

**Lane 5 :** Rat kidney lysate

**Lane 6 :** Rat spleen lysate

**Lane 7 :** C6 (Rat glial tumor cells) whole cell lysates

**Lane 8 :** NIH/3T3 (Mouse embryo fibroblast cells) whole cell lysates

Lysates/proteins at 10 µg per lane.

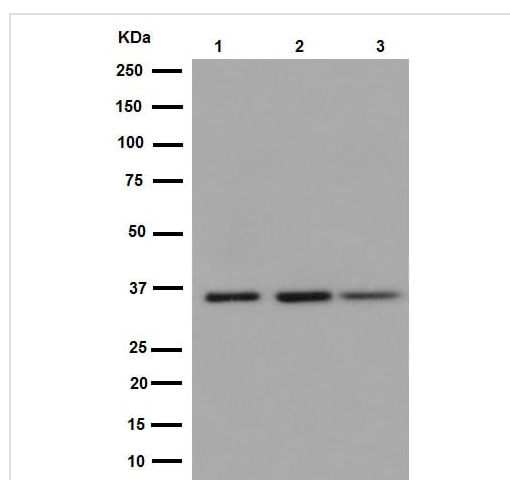
### Secondary

**All lanes :** Goat Anti-Rabbit IgG, (H+L), Peroxidase conjugated at 1/1000 dilution

**Predicted band size:** 36 kDa

**Observed band size:** 36 kDa

Blocking/Dilution buffer: 5% NFDM/TBST.



Western blot - Anti-GAPDH antibody [EPR16884] - Loading Control (ab181603)

**All lanes :** Anti-GAPDH antibody [EPR16884] - Loading Control (ab181603) at 1/10000 dilution

**Lane 1 :** Human fetal brain lysate

**Lane 2 :** Human fetal heart lysate

**Lane 3 :** Human fetal kidney lysate

Lysates/proteins at 10 µg per lane.

### Secondary

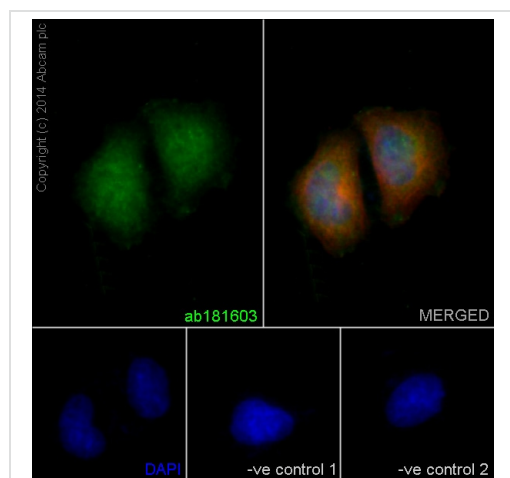
**All lanes :** Anti-Rabbit IgG (HRP), specific to the non-reduced form of IgG at 1/1000 dilution

**Predicted band size:** 36 kDa

**Observed band size:** 36 kDa



Blocking/Dilution buffer: 5% NFDM/TBST.



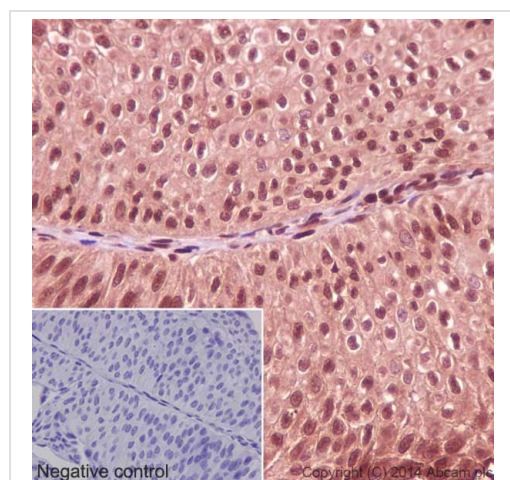
Immunocytochemistry/ Immunofluorescence - Anti-GAPDH antibody [EPR16884] - Loading Control (ab181603)

Immunofluorescent analysis of 4% paraformaldehyde-fixed, 0.1% Triton X-100 permeabilized HeLa (Human epithelial cells from cervix adenocarcinoma) cells labeling GAPDH with ab181603 at 1/250 dilution, followed by Goat anti-rabbit IgG (Alexa Fluor® 488) (**ab150077**) secondary antibody at 1/400 dilution (green).

Cytoplasm and nuclear staining on HeLa cell line is observed. The nuclear counter stain is DAPI (blue). Tubulin is detected with **ab7291** (anti-Tubulin mouse mAb) at 1/500 dilution and **ab150120** (AlexaFluor®594 Goat anti-Mouse secondary) at 1/500 dilution (red).

The negative controls are as follows;

1. ab181603 at 1/250 dilution followed by **ab150120** (AlexaFluor®594 Goat anti-Mouse secondary) at 1/500 dilution.
2. **ab7291** (anti-Tubulin mouse mAb) at 1/500 dilution followed by **ab150077** (Alexa Fluor®488 Goat Anti-Rabbit IgG H&L) at 1/400 dilution.



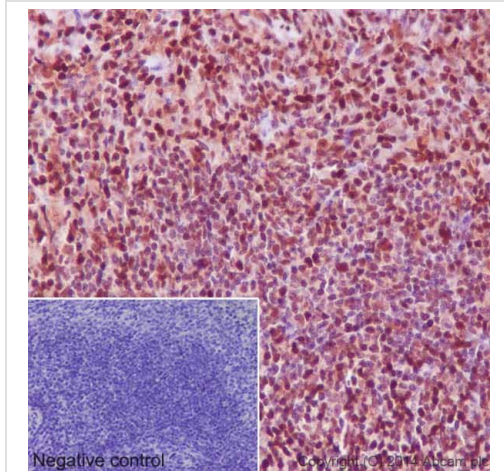
Immunohistochemistry (Formalin/PFA-fixed paraffin-embedded sections) - Anti-GAPDH antibody [EPR16884] - Loading Control (ab181603)

Immunohistochemical analysis of paraffin-embedded Human transitional cell carcinoma of bladder tissue labeling GAPDH with ab181603 at 1/500 dilution, followed by prediluted HRP Polymer for Rabbit/Mouse IgG. Cytoplasmic and nucleus staining on the tumor cells of transitional cell carcinoma of Human bladder is observed. Counter stained with Hematoxylin.

Negative control: Using PBS instead of primary ab, secondary ab is prediluted HRP Polymer for Rabbit/Mouse IgG.

Perform heat mediated antigen retrieval with Tris/EDTA buffer pH 9.0 before commencing with IHC staining protocol.



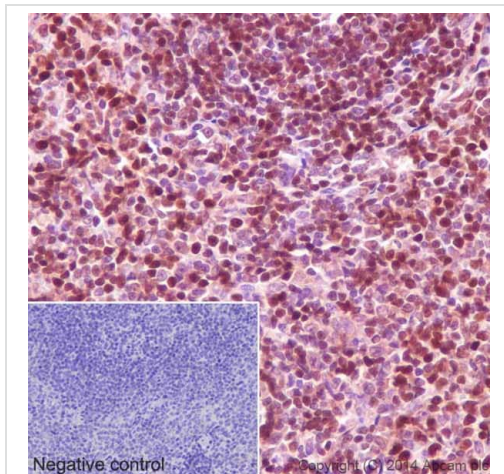


Immunohistochemistry (Formalin/PFA-fixed paraffin-embedded sections) - Anti-GAPDH antibody [EPR16884] - Loading Control (ab181603)

Immunohistochemical analysis of paraffin-embedded Mouse spleen tissue labeling GAPDH with ab181603 at 1/500 dilution, followed by prediluted HRP Polymer for Rabbit/Mouse IgG. Nucleus and cytoplasmic staining on lymphocytes of mouse spleen is observed. Counter stained with Hematoxylin.

Negative control: Using PBS instead of primary ab, secondary ab is prediluted HRP Polymer for Rabbit/Mouse IgG.

Perform heat mediated antigen retrieval with Tris/EDTA buffer pH 9.0 before commencing with IHC staining protocol.



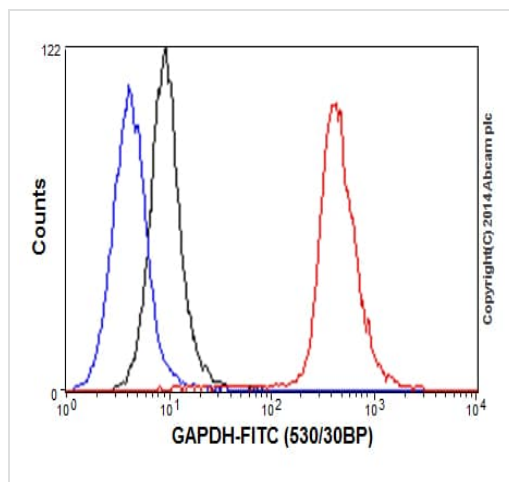
Immunohistochemistry (Formalin/PFA-fixed paraffin-embedded sections) - Anti-GAPDH antibody [EPR16884] - Loading Control (ab181603)

Immunohistochemical analysis of paraffin-embedded Rat spleen tissue labeling GAPDH with ab181603 at 1/500 dilution, followed by prediluted HRP Polymer for Rabbit/Mouse IgG. Nucleus and cytoplasmic staining on lymphocyte of rat spleen is observed. Counter stained with Hematoxylin.

Negative control: Using PBS instead of primary ab, secondary ab is prediluted HRP Polymer for Rabbit/Mouse IgG.

Perform heat mediated antigen retrieval with Tris/EDTA buffer pH 9.0 before commencing with IHC staining protocol.





Intracellular flow cytometric analysis of 2% paraformaldehyde-fixed Jurkat (Human T cell leukemia cells from peripheral blood) cells labeling GAPDH with ab181603 at 1/200 dilution (red) compared with a rabbit monoclonal IgG isotype control (black) and a unlabelled control (cells without incubation with primary antibody and secondary antibody; blue). Goat anti rabbit IgG (FITC) at 1/150 dilution was used as the secondary antibody.

Flow Cytometry (Intracellular) - Anti-GAPDH antibody [EPR16884] - Loading Control (ab181603)

Why choose a recombinant antibody?

 <p><b>Research with confidence</b> Consistent and reproducible results</p>	 <p><b>Long-term and scalable supply</b> Recombinant technology</p>
 <p><b>Success from the first experiment</b> Confirmed specificity</p>	 <p><b>Ethical standards compliant</b> Animal-free production</p>

Anti-GAPDH antibody [EPR16884] - Loading Control (ab181603)

**Please note:** All products are "FOR RESEARCH USE ONLY. NOT FOR USE IN DIAGNOSTIC PROCEDURES"

#### Our Abpromise to you: Quality guaranteed and expert technical support

- Replacement or refund for products not performing as stated on the datasheet
- Valid for 12 months from date of delivery
- Response to your inquiry within 24 hours



- We provide support in Chinese, English, French, German, Japanese and Spanish
- Extensive multi-media technical resources to help you
- We investigate all quality concerns to ensure our products perform to the highest standards

If the product does not perform as described on this datasheet, we will offer a refund or replacement. For full details of the Abpromise, please visit <https://www.abcam.cn/abpromise> or contact our technical team.

#### **Terms and conditions**

---

- Guarantee only valid for products bought direct from Abcam or one of our authorized distributors