


Anti-gamma Tubulin antibody [EPR16793] - Centrosome Marker ab179503

重组 RabMAb

★★★★☆ **3 Abreviews** **21 References** **12 图像**

概述

产品名称	Anti-gamma Tubulin抗体[EPR16793] - Centrosome Marker
描述	兔单克隆抗体[EPR16793] to gamma Tubulin - Centrosome Marker
宿主	Rabbit
经测试应用	适用于: WB, ICC/IF, IHC-P, Flow Cyt (Intra), IP
种属反应性	与反应: Mouse, Rat, Chicken, Hamster, Cow, Dog, Human, Zebrafish, African green monkey, Xenopus tropicalis 预测可用于: Fish, Monkey 
免疫原	Recombinant fragment. This information is proprietary to Abcam and/or its suppliers.
阳性对照	WB: HeLa, MDCK, MDBK, COS-1, Jurkat, C6, RAW 264.7, PC-12, NIH/3T3, UMNSAH/DF-1 and BHK whole cell lysates; Zebrafish lysates and Xenopus (X. tropicalis) muscle lysates; Human fetal brain, fetal heart, and fetal kidney lysates; Mouse brain and spleen lysates; Rat brain, heart and kidney lysates. IHC-P: Human breast carcinoma, Mouse testis and Rat testis tissues. ICC/IF: HeLa cells. Flow: UMNSAH/DF-1 cells. IP: HeLa whole cell extract.
常规说明	This product is a recombinant monoclonal antibody, which offers several advantages including: <ul style="list-style-type: none"> - High batch-to-batch consistency and reproducibility - Improved sensitivity and specificity - Long-term security of supply - Animal-free production For more information see here . Our RabMAb [®] technology is a patented hybridoma-based technology for making rabbit monoclonal antibodies. For details on our patents, please refer to RabMAb[®] patents .

性能

形式	Liquid
存放说明	Shipped at 4°C. Store at +4°C short term (1-2 weeks). Upon delivery aliquot. Store at -20°C long term. Avoid freeze / thaw cycle.
存储溶液	Preservative: 0.01% Sodium azide Constituents: 59% PBS, 40% Glycerol, 0.05% BSA

纯度	Protein A purified
克隆	单克隆
克隆编号	EPR16793
同种型	IgG

应用

The Abpromise guarantee **Abpromise™**承诺保证使用ab179503于以下的经测试应用

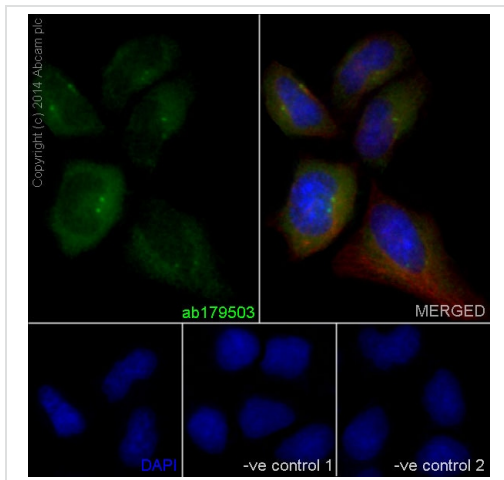
“应用说明”部分 下显示的仅为推荐的起始稀释度;实际最佳的稀释度/浓度应由使用者检定。

应用	Ab评论	说明
WB		1/2000. Detects a band of approximately 48 kDa (predicted molecular weight: 51 kDa).
ICC/IF	★★★★★ (1)	1/500.
IHC-P		1/100 - 1/250. Perform heat mediated antigen retrieval with Tris/EDTA buffer pH 9.0 before commencing with IHC staining protocol.
Flow Cyt (Intra)		1/80. ab172730 - Rabbit monoclonal IgG, is suitable for use as an isotype control with this antibody.
IP		1/30.

靶标

功能	Tubulin is the major constituent of microtubules. Gamma tubulin is found at microtubule organizing centers (MTOC) such as the spindle poles or the centrosome. Pericentriolar matrix component that regulates alpha/beta tubulin minus-end nucleation, centrosome duplication and spindle formation.
序列相似性	Belongs to the tubulin family.
翻译后修饰	Phosphorylation at Ser-131 by BRSK1 regulates centrosome duplication, possibly by mediating relocation of gamma-tubulin and its associated proteins from the cytoplasm to the centrosome.
细胞定位	Cytoplasm > cytoskeleton > centrosome.

图片

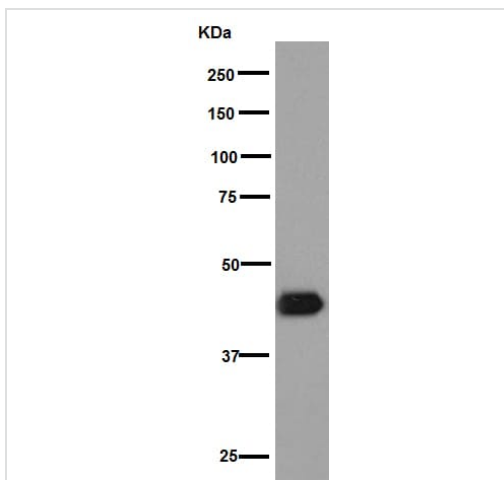


Immunocytochemistry/ Immunofluorescence - Anti-gamma Tubulin antibody [EPR16793] - Centrosome Marker (ab179503)

Immunofluorescent analysis of 4% paraformaldehyde-fixed, 0.1% Triton X-100 permeabilized HeLa (Human epithelial cells from cervix adenocarcinoma) cells labeling gamma Tubulin with ab179503 at 1/500 dilution, followed by Goat anti-rabbit IgG (Alexa Fluor® 488) (**ab150077**) secondary antibody at 1/400 dilution (green). Cytoplasmic and centrosome staining on HeLa cell line is observed. The nuclear counter stain is DAPI (blue). Tubulin is detected with **ab7291** (anti-Tubulin mouse mAb) at 1/500 dilution and **ab150120** (AlexaFluor®594 Goat anti-Mouse secondary) at 1/500 dilution (red).

The negative controls are as follows;

1. ab179503 at 1/500 dilution followed by **ab150120** (AlexaFluor®594 Goat anti-Mouse secondary) at 1/500 dilution.
2. **ab7291** (anti-Tubulin mouse mAb) at 1/500 dilution followed by **ab150077** (Alexa Fluor®488 Goat Anti-Rabbit IgG H&L) at 1/400 dilution.



Western blot - Anti-gamma Tubulin antibody [EPR16793] - Centrosome Marker (ab179503)

Anti-gamma Tubulin antibody [EPR16793] - Centrosome Marker (ab179503) at 1/20000 dilution + Jurkat (Human T cell leukemia cells from peripheral blood) whole cell lysates at 20 µg

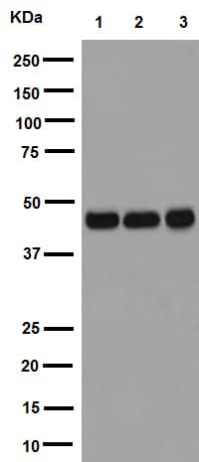
Secondary

Goat Anti-Rabbit IgG, (H+L), Peroxidase conjugated at 1/1000 dilution

Predicted band size: 51 kDa

Observed band size: 48 kDa

Blocking/Dilution buffer: 5% NFDM/TBST.



Western blot - Anti-gamma Tubulin antibody [EPR16793] - Centrosome Marker (ab179503)

All lanes : Anti-gamma Tubulin antibody [EPR16793] - Centrosome Marker (ab179503) at 1/2000 dilution

Lane 1 : Human fetal brain lysates

Lane 2 : Human fetal heart lysates

Lane 3 : Human fetal kidney lysates

Lysates/proteins at 10 µg per lane.

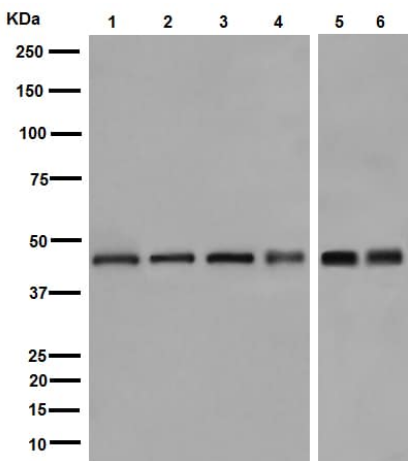
Secondary

All lanes : Anti-Rabbit IgG (HRP), specific to the non-reduced form of IgG at 1/1000 dilution

Predicted band size: 51 kDa

Observed band size: 48 kDa

Blocking/Dilution buffer: 5% NFDM/TBST.



Western blot - Anti-gamma Tubulin antibody [EPR16793] - Centrosome Marker (ab179503)

All lanes : Anti-gamma Tubulin antibody [EPR16793] - Centrosome Marker (ab179503) at 1/2000 dilution

Lane 1 : HeLa (Human epithelial cells from cervix adenocarcinoma) whole cell lysates

Lane 2 : MDCK (Canine kidney cell line) whole cell lysates

Lane 3 : MDBK (Bovine kidney cell line) whole cell lysates

Lane 4 : COS-1 (African green monkey kidney fibroblast-like cell line) whole cell lysates

Lane 5 : Zebrafish lysates

Lane 6 : Xenopus (*X. tropicalis*) muscle lysates

Lysates/proteins at 20 µg per lane.

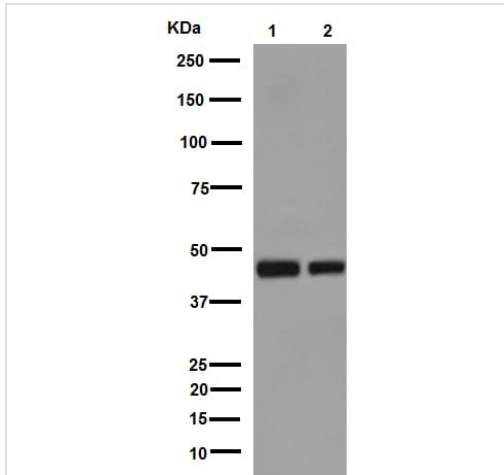
Secondary

All lanes : Goat Anti-Rabbit IgG, (H+L), Peroxidase conjugated at 1/1000 dilution

Predicted band size: 51 kDa

Observed band size: 48 kDa

Blocking/Dilution buffer: 5% NFDm/TBST.



Western blot - Anti-gamma Tubulin antibody [EPR16793] - Centrosome Marker (ab179503)

All lanes : Anti-gamma Tubulin antibody [EPR16793] - Centrosome Marker (ab179503) at 1/20000 dilution

Lane 1 : UMNSAH/DF-1 (Transformed chicken embryonic fibroblast cells) whole cell lysates

Lane 2 : BHK (Hamster kidney fibroblast cells) whole cell lysates

Lysates/proteins at 20 µg per lane.

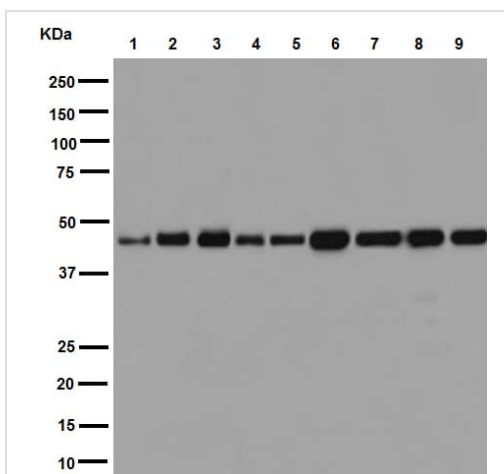
Secondary

All lanes : Goat Anti-Rabbit IgG, (H+L), Peroxidase conjugated at 1/1000 dilution

Predicted band size: 51 kDa

Observed band size: 48 kDa

Blocking/Dilution buffer: 5% NFDm/TBST.



Western blot - Anti-gamma Tubulin antibody [EPR16793] - Centrosome Marker (ab179503)

All lanes : Anti-gamma Tubulin antibody [EPR16793] - Centrosome Marker (ab179503) at 1/2000 dilution

Lane 1 : Mouse brain lysates

Lane 2 : Mouse spleen lysates

Lane 3 : Rat brain lysates

Lane 4 : Rat heart lysates

Lane 5 : Rat kidney lysates

Lane 6 : C6 (Rat glial tumor cells) whole cell lysates

Lane 7 : RAW 264.7 (Mouse macrophage cells transformed with Abelson murine leukemia virus) whole cell lysates

Lane 8 : PC-12 (Rat adrenal gland pheochromocytoma) whole cell lysates

Lane 9 : NIH/3T3 (Mouse embryo fibroblast cells) whole cell lysates

Lysates/proteins at 10 µg per lane.

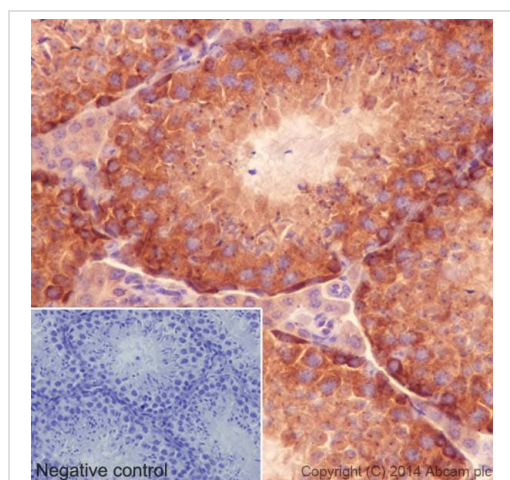
Secondary

All lanes : Goat Anti-Rabbit IgG, (H+L), Peroxidase conjugated at 1/1000 dilution

Predicted band size: 51 kDa

Observed band size: 48 kDa

Blocking/Dilution buffer: 5% NFDm/TBST.

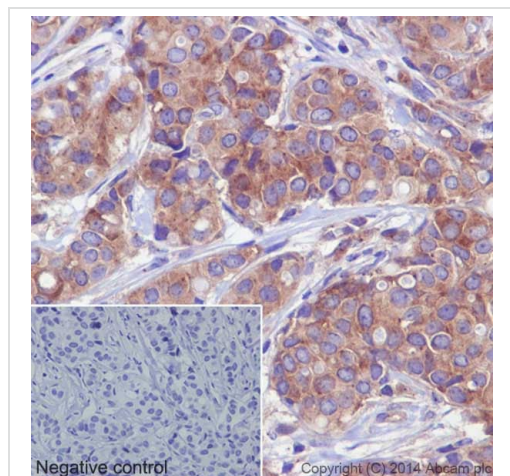


Immunohistochemical analysis of paraffin-embedded Mouse testis tissue labeling gamma Tubulin with ab179503 at 1/250 dilution, followed by prediluted HRP Polymer for Rabbit/Mouse IgG. Cytoplasmic staining on epithelial cells of mouse testis is observed. Counter stained with Hematoxylin.

Negative control: Using PBS instead of primary ab, secondary ab is prediluted HRP Polymer for Rabbit/Mouse IgG.

Perform heat mediated antigen retrieval with Tris/EDTA buffer pH 9.0 before commencing with IHC staining protocol.

Immunohistochemistry (Formalin/PFA-fixed paraffin-embedded sections) - Anti-gamma Tubulin antibody [EPR16793] - Centrosome Marker (ab179503)

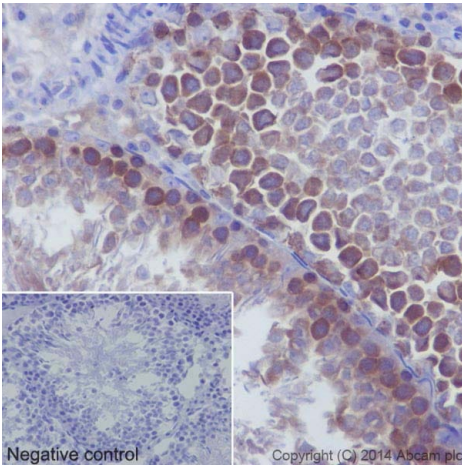


Immunohistochemical analysis of paraffin-embedded Human breast carcinoma tissue labeling gamma Tubulin with ab179503 at 1/250 dilution, followed by prediluted HRP Polymer for Rabbit/Mouse IgG. Cytoplasmic staining on tumor cells of breast carcinoma is observed. Counter stained with Hematoxylin.

Negative control: Using PBS instead of primary ab, secondary ab is prediluted HRP Polymer for Rabbit/Mouse IgG.

Perform heat mediated antigen retrieval with Tris/EDTA buffer pH 9.0 before commencing with IHC staining protocol.

Immunohistochemistry (Formalin/PFA-fixed paraffin-embedded sections) - Anti-gamma Tubulin antibody [EPR16793] - Centrosome Marker (ab179503)

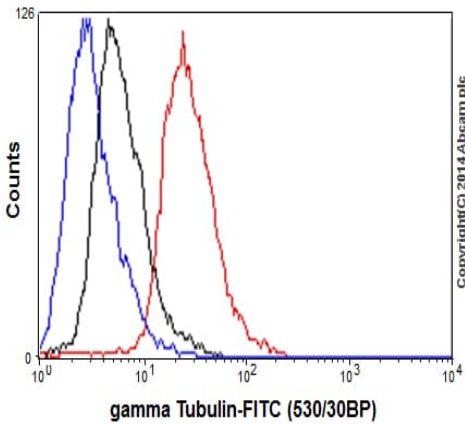


Immunohistochemical analysis of paraffin-embedded Rat testis tissue labeling gamma Tubulin with ab179503 at 1/250 dilution, followed by prediluted HRP Polymer for Rabbit/Mouse IgG. Cytoplasm staining on epithelial cells of rat testis is observed. Counter stained with Hematoxylin.

Negative control: Using PBS instead of primary ab, secondary ab is prediluted HRP Polymer for Rabbit/Mouse IgG.

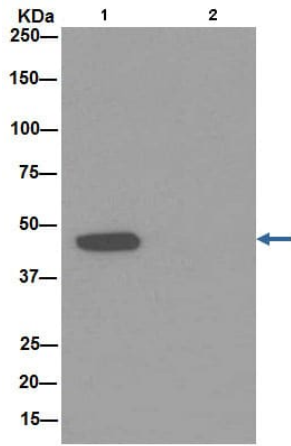
Perform heat mediated antigen retrieval with Tris/EDTA buffer pH 9.0 before commencing with IHC staining protocol.

Immunohistochemistry (Formalin/PFA-fixed paraffin-embedded sections) - Anti-gamma Tubulin antibody [EPR16793] - Centrosome Marker (ab179503)



Intracellular flow cytometric analysis of 2% paraformaldehyde-fixed UMNSAH/DF-1 (Transformed chicken embryonic fibroblast cells) cells labeling gamma Tubulin with ab179503 at 1/80 dilution (red) compared with a rabbit monoclonal IgG isotype control (black) and an unlabelled control (cells without incubation with primary antibody and secondary antibody; blue). Goat anti rabbit IgG (FITC) at 1/150 dilution was used as the secondary antibody.

Flow Cytometry (Intracellular) - Anti-gamma Tubulin antibody [EPR16793] - Centrosome Marker (ab179503)



Immunoprecipitation - Anti-gamma Tubulin antibody
[EPR16793] - Centrosome Marker (ab179503)

Gamma Tubulin was immunoprecipitated from 1mg of HeLa (Human epithelial cells from cervix adenocarcinoma) whole cell extract with ab179503 at 1/30 dilution. Western blot was performed from the immunoprecipitate using ab179503 at 1/1000 dilution. Anti-Rabbit IgG (HRP), specific to the non-reduced form of IgG was used as secondary antibody at 1/1500 dilution. Lane 1: HeLa whole cell extract. Lane 2: PBS instead of HeLa whole cell extract.

Blocking and dilution buffer and concentration: 5% NFD/MTBST.

Why choose a recombinant antibody?



Anti-gamma Tubulin antibody [EPR16793] -
Centrosome Marker (ab179503)

Please note: All products are "FOR RESEARCH USE ONLY. NOT FOR USE IN DIAGNOSTIC PROCEDURES"

Our Abpromise to you: Quality guaranteed and expert technical support

- Replacement or refund for products not performing as stated on the datasheet
- Valid for 12 months from date of delivery
- Response to your inquiry within 24 hours
- We provide support in Chinese, English, French, German, Japanese and Spanish
- Extensive multi-media technical resources to help you
- We investigate all quality concerns to ensure our products perform to the highest standards

If the product does not perform as described on this datasheet, we will offer a refund or replacement. For full details of the Abpromise, please visit <https://www.abcam.cn/abpromise> or contact our technical team.

Terms and conditions

- Guarantee only valid for products bought direct from Abcam or one of our authorized distributors