

Anti-gamma Tubulin antibody ab11317

★★★★☆ [16 Abreviews](#) [100 References](#) [4 图像](#)

概述

| | |
|--------------|--|
| 产品名称 | Anti-gamma Tubulin抗体 |
| 描述 | 兔多克隆抗体to gamma Tubulin |
| 宿主 | Rabbit |
| 经测试应用 | 适用于: ICC/IF, WB |
| 种属反应性 | 与反应: Mouse, Rat, Human, Chinese hamster 预测可用于: Drosophila melanogaster, Schizosaccharomyces pombe, Sea urchin  |
| 免疫原 | Synthetic peptide: EEFATEGTDRKDVFFY-C conjugated to KLH, corresponding to N terminal amino acids 38-53 of Human gamma Tubulin Run BLAST with Run BLAST with |
| 阳性对照 | ICC/IF: Rat2 cells; NIH3T3 cells; HeLa cells. WB: Rat2 cell lysate; A431 cell lysate; HeLa cell lysate; Jurkat cell lysate; U87 cell lysate; C2C12 cell lysate; CHO cell lysate; NIH3T3 cell lysate. |
| 常规说明 | The Life Science industry has been in the grips of a reproducibility crisis for a number of years. Abcam is leading the way in addressing this with our range of recombinant monoclonal antibodies and knockout edited cell lines for gold-standard validation. Please check that this product meets your needs before purchasing. If you have any questions, special requirements or concerns, please send us an inquiry and/or contact our Support team ahead of purchase. Recommended alternatives for this product can be found below, along with publications, customer reviews and Q&As |

性能

| | |
|-------------|--|
| 形式 | Liquid |
| 存放说明 | Shipped at 4°C. Upon delivery aliquot and store at -20°C or -80°C. Avoid repeated freeze / thaw cycles. |
| 存储溶液 | pH: 7.40 Preservative: 0.097% Sodium azide Constituents: 0.0268% PBS, 0.42% Potassium phosphate, 0.87% Sodium chloride |
| 纯度 | IgG fraction |
| 克隆 | 多克隆 |

应用

The Abpromise guarantee **Abpromise™**承诺保证使用ab11317于以下的经测试应用

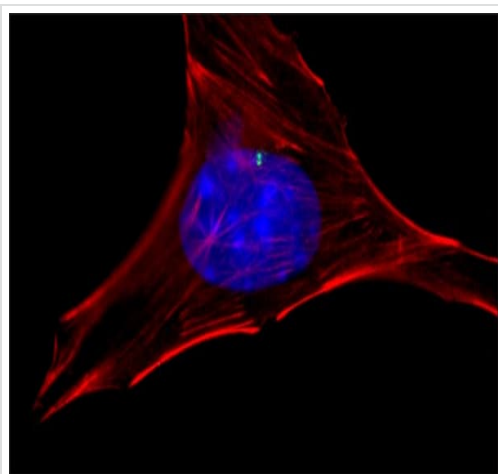
“应用说明”部分 下显示的仅为推荐的起始稀释度;实际最佳的稀释度/浓度应由使用者检定。

| 应用 | Ab评论 | 说明 |
|--------|-----------|---|
| ICC/IF | ★★★★★ (5) | 1/5000. It is recommended to fix cells with methanol/acetone. |
| WB | ★★★★★ (7) | 1/1000. Detects a band of approximately 48 kDa. This concentration was determined for A431 cultured cells extract. Block with 5% BSA in TBST (not milk). Detects a band of approximately 48 kDa. Additional bands can occasionally be seen. |

靶标

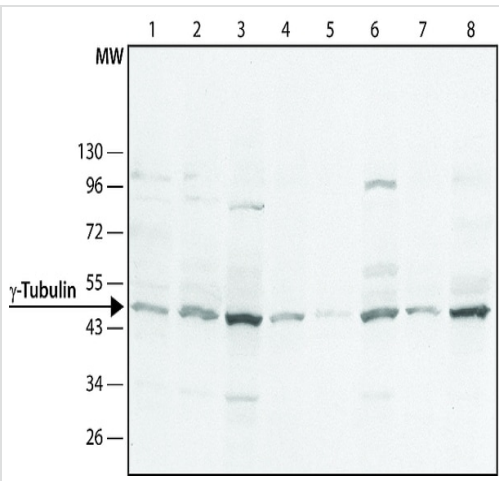
| | |
|--------------|--|
| 功能 | Tubulin is the major constituent of microtubules. Gamma tubulin is found at microtubule organizing centers (MTOC) such as the spindle poles or the centrosome. Pericentriolar matrix component that regulates alpha/beta tubulin minus-end nucleation, centrosome duplication and spindle formation. |
| 序列相似性 | Belongs to the tubulin family. |
| 翻译后修饰 | Phosphorylation at Ser-131 by BRSK1 regulates centrosome duplication, possibly by mediating relocation of gamma-tubulin and its associated proteins from the cytoplasm to the centrosome. |
| 细胞定位 | Cytoplasm > cytoskeleton > centrosome. |

图片



Immunocytochemistry/Immunofluorescence analysis of NIH3T3 cells labelling gamma Tubulin (green) with ab11317 at a dilution of 1/1500. A Atto448 dye conjugated goat anti-rabbit IgG was used as the secondary antibody. Actin was stained with phalloidin rhodamine conjugate (red). Nuclear staining with DAPI (blue).

Immunocytochemistry/ Immunofluorescence - Anti-gamma Tubulin antibody (ab11317)



Western blot - Anti-gamma Tubulin antibody (ab11317)

All lanes : Anti-gamma Tubulin antibody (ab11317) at 1/1000 dilution

Lane 1 : A431 cell lysate

Lane 2 : HeLa cell lysate

Lane 3 : Jurkat cell lysate

Lane 4 : C2C12 cell lysate

Lane 5 : Rat2 cell lysate

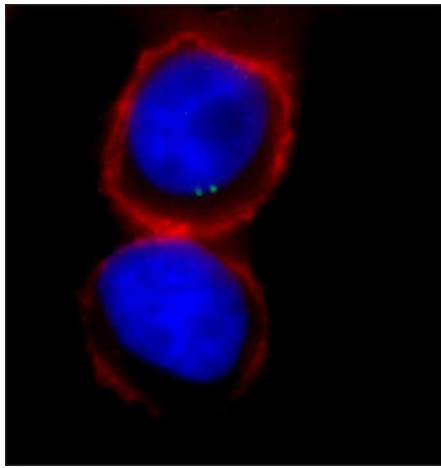
Lane 6 : U87 cell lysate

Lane 7 : NIH3T3 cell lysate

Lane 8 : CHO cell lysate

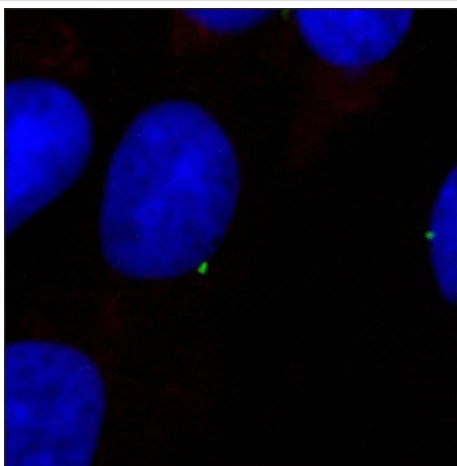
Secondary

All lanes : Peroxidase-conjugated goat anti-rabbit IgG



Immunocytochemistry/ Immunofluorescence - Anti-gamma Tubulin antibody (ab11317)

Immunocytochemistry/Immunofluorescence analysis of HeLa cells labelling gamma Tubulin (green) with ab11317 at a dilution of 1/1500. A Atto448 dye conjugated goat anti-rabbit IgG was used as the secondary antibody. Actin was stained with phalloidin rhodamine conjugate (red). Nuclear staining with DAPI (blue).



Immunocytochemistry/ Immunofluorescence - Anti-gamma Tubulin antibody (ab11317)

Immunocytochemistry/Immunofluorescence analysis of Rat2 cells labelling gamma Tubulin (green) with ab11317 at a dilution of 1/1500. A Atto448 dye conjugated goat anti-rabbit IgG was used as the secondary antibody. Actin was stained with phalloidin rhodamine conjugate (red). Nuclear staining with DAPI (blue).

Please note: All products are "FOR RESEARCH USE ONLY. NOT FOR USE IN DIAGNOSTIC PROCEDURES"

Our Abpromise to you: Quality guaranteed and expert technical support

- Replacement or refund for products not performing as stated on the datasheet
- Valid for 12 months from date of delivery
- Response to your inquiry within 24 hours

- We provide support in Chinese, English, French, German, Japanese and Spanish
- Extensive multi-media technical resources to help you
- We investigate all quality concerns to ensure our products perform to the highest standards

If the product does not perform as described on this datasheet, we will offer a refund or replacement. For full details of the Abpromise, please visit <https://www.abcam.cn/abpromise> or contact our technical team.

Terms and conditions

- Guarantee only valid for products bought direct from Abcam or one of our authorized distributors