

# Anti-GABA A Receptor gamma 2/GABRG2 antibody ab87328

[9 References](#) [2 图像](#)

### 概述

|       |   |
|-------|---|
| 产品名称  | Anti-GABA A Receptor gamma 2/GABRG2抗体   |
| 描述    | 兔多克隆抗体to GABA A Receptor gamma 2/GABRG2   |
| 宿主    | Rabbit  |
| 经测试应用 | 适用于: WB   |
| 种属反应性 | 与反应: Mouse, Human<br>预测可用于: Rat, Cow   |
| 免疫原   | Synthetic peptide. This information is proprietary to Abcam and/or its suppliers.   |
| 阳性对照  | This antibody gave a positive signal in the following tissue lysates: human brain; mouse brain; human spinal cord; mouse spinal cord.   |
| 常规说明  | <p>The Life Science industry has been in the grips of a reproducibility crisis for a number of years. Abcam is leading the way in addressing this with our range of recombinant monoclonal antibodies and knockout edited cell lines for gold-standard validation. Please check that this product meets your needs before purchasing.</p> <p>If you have any questions, special requirements or concerns, please send us an inquiry and/or contact our Support team ahead of purchase. Recommended alternatives for this product can be found below, along with publications, customer reviews and Q&amp;As</p> |

### 性能

|      |  |
|------|--|
| 形式   | Liquid   |
| 存放说明 | Shipped at 4°C. Store at +4°C short term (1-2 weeks). Upon delivery aliquot. Store at -20°C or -80°C. Avoid freeze / thaw cycle.   |
| 存储溶液 | pH: 7.40<br>Preservative: 0.02% Sodium azide<br>Constituent: PBS<br><br>Batches of this product that have a concentration < 1mg/ml may have BSA added as a stabilising agent. If you would like information about the formulation of a specific lot, please contact our scientific support team who will be happy to help. |
| 纯度   | Immunogen affinity purified  |
| 克隆   | 多克隆  |

## 应用

**The Abpromise guarantee** **Abpromise™**承诺保证使用ab87328于以下的经测试应用

“应用说明”部分 下显示的仅为推荐的起始稀释度;实际最佳的稀释度/浓度应由使用者检定。

| 应用 | Ab评论 | 说明   |
|----|------|--|
| WB |      | Use a concentration of 1 µg/ml. Detects a band of approximately 51 kDa (predicted molecular weight: 54 kDa). |

## 靶标

## 功能

GABA, the major inhibitory neurotransmitter in the vertebrate brain, mediates neuronal inhibition by binding to the GABA/benzodiazepine receptor and opening an integral chloride channel.

## 疾病相关

Defects in GABRG2 are the cause of childhood absence epilepsy type 2 (ECA2) [MIM:607681]. ECA2 is a subtype of idiopathic generalized epilepsy (IGE) characterized by an onset at age 6-7 years, frequent absence seizures (several per day) and bilateral, synchronous, symmetric 3-Hz spike waves on EEG. During adolescence, tonic-clonic and myoclonic seizures develop. Some individuals manifest ECA2 occurring in combination with febrile convulsions.

Defects in GABRG2 are the cause of familial febrile convulsions type 8 (FEB8) [MIM:611277]. A febrile convulsion is defined as a seizure event in infancy or childhood, usually occurring between 6 months and 6 years of age, associated with fever but without any evidence of intracranial infection or defined pathologic or traumatic cause. Febrile convulsions affect 5-12% of infants and children up to 6 years of age. There is epidemiological evidence that febrile seizures are associated with subsequent afebrile and unprovoked seizures in 2% to 7% of patients.

Defects in GABRG2 are the cause of generalized epilepsy with febrile seizures plus type 3 (GEFS+3) [MIM:604233]. Generalized epilepsy with febrile seizures-plus refers to a rare autosomal dominant, familial condition with incomplete penetrance and large intrafamilial variability. Patients display febrile seizures persisting sometimes beyond the age of 6 years and/or a variety of afebrile seizure types. GEFS+ is a disease combining febrile seizures, generalized seizures often precipitated by fever at age 6 years or more, and partial seizures, with a variable degree of severity.

Defects in GABRG2 are a cause of severe myoclonic epilepsy in infancy (SMEI) [MIM:607208]; also called Dravet syndrome. SMEI is a rare disorder characterized by generalized tonic, clonic, and tonic-clonic seizures that are initially induced by fever and begin during the first year of life. Later, patients also manifest other seizure types, including absence, myoclonic, and simple and complex partial seizures. Psychomotor development delay is observed around the second year of life. SMEI is considered to be the most severe phenotype within the spectrum of generalized epilepsies with febrile seizures-plus.

## 序列相似性

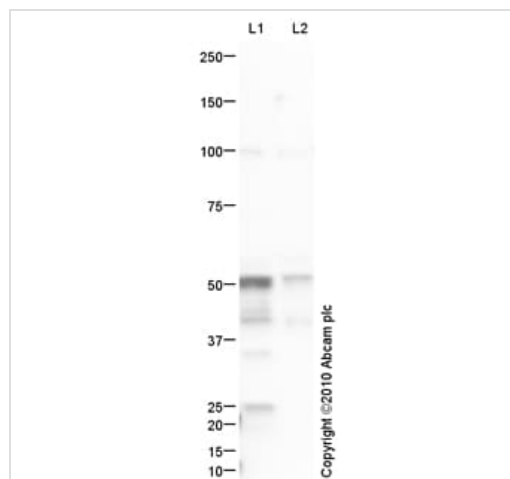
Belongs to the ligand-gated ion channel (TC 1.A.9) family. Gamma-aminobutyric acid receptor (TC 1.A.9.5) subfamily. GABRG2 sub-subfamily.

## 翻译后修饰

Palmitoylated by ZDHHC3/GODZ; which may affect presynaptic clustering and/or cell surface stability.

## 细胞定位

Cell junction > synapse > postsynaptic cell membrane. Cell membrane.



Western blot - Anti-GABA A Receptor gamma 2/GABRG2 antibody (ab87328)

**All lanes** : Anti-GABA A Receptor gamma 2/GABRG2 antibody (ab87328)

**Lane 1** : Human brain tissue lysate - total protein ([ab29466](#))

**Lane 2** : Human spinal cord tissue lysate - total protein ([ab29188](#))

Lysates/proteins at 10 µg per lane.

### Secondary

**All lanes** : Goat polyclonal to Rabbit IgG - H&L - Pre-Adsorbed (HRP) at 1/3000 dilution

Developed using the ECL technique.

Performed under reducing conditions.

**Predicted band size:** 54 kDa

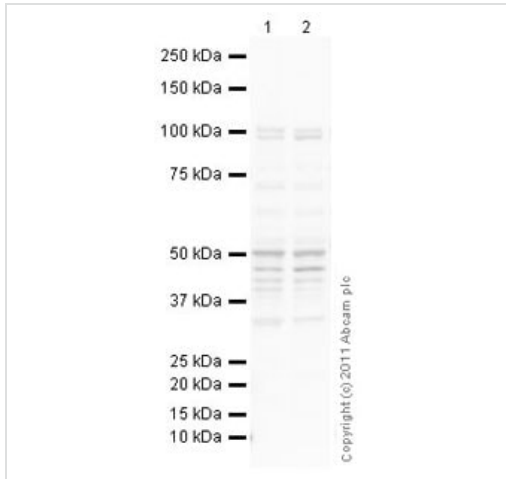
**Observed band size:** 51 kDa

**Additional bands at:** 25 kDa, 42 kDa. We are unsure as to the identity of these extra bands.

**Exposure time:** 12 minutes

We hypothesize that the 51 kDa band represents the mature form of GABA A Receptor gamma 2/GABRG2.

Abcam welcomes customer feedback.



Western blot - Anti-GABA A Receptor gamma 2/GABRG2 antibody (ab87328)

**All lanes :** Anti-GABA A Receptor gamma 2/GABRG2 antibody (ab87328) at 1 µg/ml

**Lane 1 :** Brain (Mouse) Tissue Lysate

**Lane 2 :** Spinal Cord (Mouse) Tissue Lysate

Lysates/proteins at 10 µg per lane.

### Secondary

**All lanes :** Goat Anti-Rabbit IgG H&L (HRP) preadsorbed (**ab97080**) at 1/5000 dilution

Developed using the ECL technique.

Performed under reducing conditions.

**Predicted band size:** 54 kDa

**Observed band size:** 50 kDa

**Additional bands at:** 100 kDa, 45 kDa, 48 kDa. We are unsure as to the identity of these extra bands.

**Exposure time:** 1 minute

**Please note:** All products are "FOR RESEARCH USE ONLY. NOT FOR USE IN DIAGNOSTIC PROCEDURES"

### Our Abpromise to you: Quality guaranteed and expert technical support

- Replacement or refund for products not performing as stated on the datasheet
- Valid for 12 months from date of delivery
- Response to your inquiry within 24 hours
- We provide support in Chinese, English, French, German, Japanese and Spanish
- Extensive multi-media technical resources to help you
- We investigate all quality concerns to ensure our products perform to the highest standards

If the product does not perform as described on this datasheet, we will offer a refund or replacement. For full details of the Abpromise, please visit <https://www.abcam.cn/abpromise> or contact our technical team.

### Terms and conditions

- Guarantee only valid for products bought direct from Abcam or one of our authorized distributors