

# Anti-G-CSF antibody [CSF3/900] - BSA and Azide free ab212315

### 1 图像

#### 概述

产品名称	Anti-G-CSF抗体[CSF3/900] - BSA and Azide free
描述	小鼠单克隆抗体[CSF3/900] to G-CSF - BSA and Azide free
宿主	Mouse
特异性	This antibody recognizes G-CSF in the cytoplasm of mature granulocytes. It shows no reactivity with any other cell types. It reacts with early precursor and mature forms of myeloid cells. It is useful for the detection of myeloid leukemias and granulocytic sarcomas. It can be used as a marker of granulocytes in normal tissues or inflammatory processes.
经测试应用	<b>适用于:</b> IHC-P
种属反应性	<b>与反应:</b> Human
免疫原	Recombinant full length protein. Database link: <a href="#">P09919</a>
阳性对照	HL60 cells; Tonsil or lymph node tissues.
常规说明	<p>The Life Science industry has been in the grips of a reproducibility crisis for a number of years. Abcam is leading the way in addressing this with our range of recombinant monoclonal antibodies and knockout edited cell lines for gold-standard validation. Please check that this product meets your needs before purchasing.</p> <p>If you have any questions, special requirements or concerns, please send us an inquiry and/or contact our Support team ahead of purchase. Recommended alternatives for this product can be found below, along with publications, customer reviews and Q&amp;As</p>

#### 性能

形式	Liquid
存放说明	Shipped at 4°C. Store at +4°C short term (1-2 weeks). Upon delivery aliquot. Store at -20°C long term. Avoid freeze / thaw cycle.
存储溶液	pH: 7.2 Constituent: 100% PBS
无载体	是
纯度	Protein A/G purified

克隆	单克隆
克隆编号	CSF3/900
同种型	IgG1

## 应用

**The Abpromise guarantee** **Abpromise™** 承诺保证使用 ab212315 于以下的经测试应用

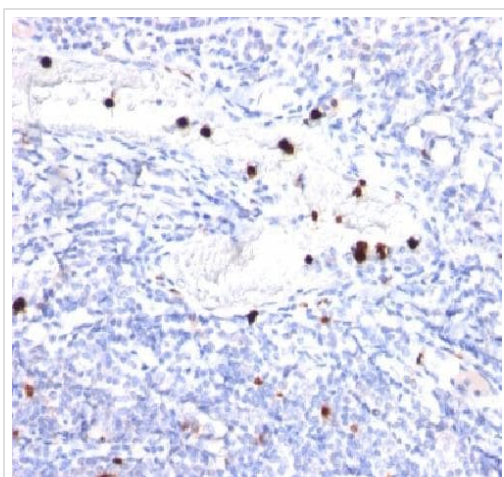
“应用说明”部分下显示的仅为推荐的起始稀释度；实际最佳的稀释度/浓度应由使用者检定。

应用	Ab评论	说明
IHC-P		Use a concentration of 0.5 - 1 µg/ml. Perform heat mediated antigen retrieval with Tris/EDTA buffer pH 9.0 before commencing with IHC staining protocol. for 30 minutes at RT

## 靶标

<b>功能</b>	Granulocyte/macrophage colony-stimulating factors are cytokines that act in hematopoiesis by controlling the production, differentiation, and function of 2 related white cell populations of the blood, the granulocytes and the monocytes-macrophages. This CSF induces granulocytes.
<b>序列相似性</b>	Belongs to the IL-6 superfamily.
<b>翻译后修饰</b>	O-glycan consists of Gal-GalNAc disaccharide which can be modified with up to two sialic acid residues (done in recombinantly expressed G-CSF from CHO cells).
<b>细胞定位</b>	Secreted.

## 图片



Immunohistochemical analysis of formalin-fixed, paraffin-embedded Human tonsil tissue labeling G-CSF with ab212315 at 1 µg/ml.

Immunohistochemistry (Formalin/PFA-fixed paraffin-embedded sections) - Anti-G-CSF antibody [CSF3/900] - BSA and Azide free (ab212315)

**Please note:** All products are "FOR RESEARCH USE ONLY. NOT FOR USE IN DIAGNOSTIC PROCEDURES"

### **Our Abpromise to you: Quality guaranteed and expert technical support**

---

- Replacement or refund for products not performing as stated on the datasheet
- Valid for 12 months from date of delivery
- Response to your inquiry within 24 hours
  
- We provide support in Chinese, English, French, German, Japanese and Spanish
- Extensive multi-media technical resources to help you
- We investigate all quality concerns to ensure our products perform to the highest standards

If the product does not perform as described on this datasheet, we will offer a refund or replacement. For full details of the Abpromise, please visit <https://www.abcam.cn/abpromise> or contact our technical team.

### **Terms and conditions**

---

- Guarantee only valid for products bought direct from Abcam or one of our authorized distributors