

Anti-FXYD3 antibody [EPR17160] ab205534

重组 RabMAb

7 References 8 图像

概述	
产品名称	Anti-FXYD3抗体[EPR17160]
描述	兔单克隆抗体[EPR17160] to FXYD3
宿主	Rabbit
经测试应用	适用于: Flow Cyt (Intra), WB, IHC-P, ICC/IF
种属反应性	与反应: Human
免疫原	Synthetic peptide. This information is proprietary to Abcam and/or its suppliers.
阳性对照	WB: Human stomach and colon cancer lysates; MCF7 whole cell lysate. IHC-P: Human breast carcinoma tissue. ICC/IF: HeLa and HT-29 cells. Flow Cyt (intra): MCF7 cells.
常规说明	<p>This product is a recombinant monoclonal antibody, which offers several advantages including:</p> <ul style="list-style-type: none">- High batch-to-batch consistency and reproducibility- Improved sensitivity and specificity- Long-term security of supply- Animal-free production <p>For more information see here.</p> <p>Our RabMAb[®] technology is a patented hybridoma-based technology for making rabbit monoclonal antibodies. For details on our patents, please refer to RabMAb[®] patents.</p>
性能	
形式	Liquid
存放说明	Shipped at 4°C. Store at +4°C short term (1-2 weeks). Upon delivery aliquot. Store at -20°C long term. Avoid freeze / thaw cycle.
存储溶液	<p>pH: 7.2</p> <p>Preservative: 0.01% Sodium azide</p> <p>Constituents: 59% PBS, 40% Glycerol (glycerin, glycerine), 0.05% BSA</p>
纯度	Protein A purified
克隆	单克隆
克隆编号	EPR17160
同种型	IgG

应用

The Abpromise guarantee **Abpromise™**承诺保证使用ab205534于以下的经测试应用

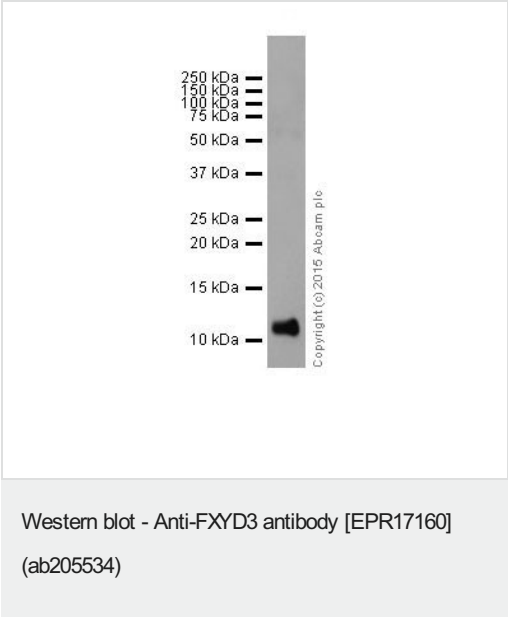
“应用说明”部分 下显示的仅为推荐的起始稀释度;实际最佳的稀释度/浓度应由使用者检定。

应用	Ab评论	说明
Flow Cyt (Intra)		1/60.
WB		1/1000. Detects a band of approximately 12 kDa (predicted molecular weight: 9 kDa).
IHC-P		1/2000. Perform heat mediated antigen retrieval with Tris/EDTA buffer pH 9.0 before commencing with IHC staining protocol.
ICC/IF		1/100.

靶标

功能	Induces a hyperpolarization-activated chloride current when expressed in Xenopus oocytes. May be a modulator capable of activating endogenous oocyte channels.
组织特异性	Expressed in a subset of human breast tumors.
序列相似性	Belongs to the FXYP family.
细胞定位	Membrane.

图片



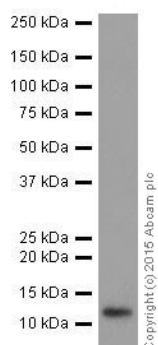
Anti-FXYD3 antibody [EPR17160] (ab205534) at 1/1000 dilution + Human stomach lysate at 20 µg

Secondary
Goat Anti-Rabbit IgG H&L (HRP) ([ab97051](#)) at 1/100000 dilution

Predicted band size: 9 kDa
Observed band size: 12 kDa

Exposure time: 3 minutes

Blocking/Dilution buffer: 5% NFDM/TBST.



Western blot - Anti-FXYD3 antibody [EPR17160]
(ab205534)

Anti-FXYD3 antibody [EPR17160] (ab205534) at 1/1000 dilution +
Human colon cancer lysate at 10 µg

Secondary

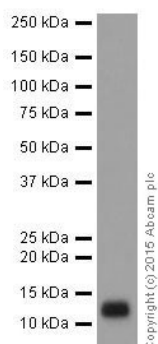
Anti-Rabbit IgG (HRP), specific to the non-reduced form of IgG at
1/10000 dilution

Predicted band size: 9 kDa

Observed band size: 12 kDa

Exposure time: 3 minutes

Blocking/Dilution buffer: 5% NFDM/TBST.



Western blot - Anti-FXYD3 antibody [EPR17160]
(ab205534)

Anti-FXYD3 antibody [EPR17160] (ab205534) at 1/5000 dilution +
MCF7 (Human breast adenocarcinoma cell line) whole cell lysate at
10 µg

Secondary

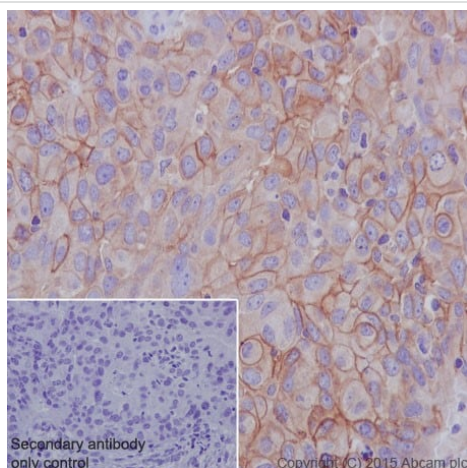
Goat Anti-Rabbit IgG H&L (HRP) ([ab97051](#)) at 1/100000 dilution

Predicted band size: 9 kDa

Observed band size: 12 kDa

Exposure time: 30 seconds

Blocking/Dilution buffer: 5% NFDM/TBST.

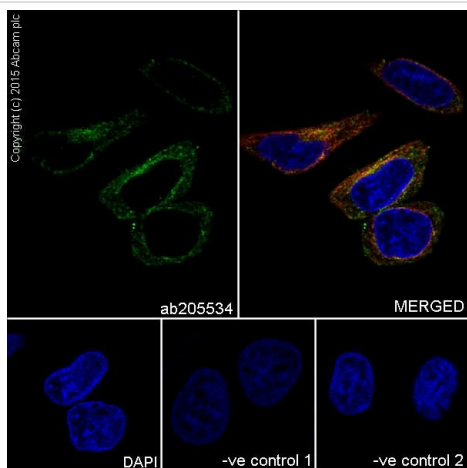


Immunohistochemistry (Formalin/PFA-fixed paraffin-embedded sections) - Anti-FXYD3 antibody [EPR17160] (ab205534)

Immunohistochemical analysis of paraffin-embedded human breast carcinoma tissue labeling FXYD3 with ab205534 at 1/2000 dilution, followed by Goat Anti-Rabbit IgG H&L (HRP) ([ab97051](#)) at 1/500 dilution. Membrane and cytoplasmic staining on human breast carcinoma is observed. Counter stained with Hematoxylin.

Secondary antibody only control: Used PBS instead of primary antibody, secondary antibody is Goat Anti-Rabbit IgG H&L (HRP) ([ab97051](#)) at 1/500 dilution.

Perform heat mediated antigen retrieval with Tris/EDTA buffer pH 9.0 before commencing with IHC staining protocol.



Immunocytochemistry/ Immunofluorescence - Anti-FXYD3 antibody [EPR17160] (ab205534)

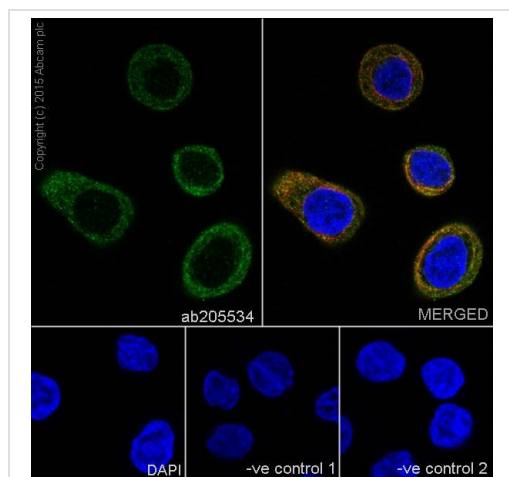
Immunofluorescent analysis of 4% paraformaldehyde-fixed, 0.1% Triton X-100 permeabilized HeLa (Human epithelial cells from cervix adenocarcinoma) cells labeling FXYD3 with ab205534 at 1/100 dilution, followed by Goat Anti-Rabbit IgG H&L (Alexa Fluor[®] 488) ([ab150077](#)) secondary antibody at 1/1000 dilution (green). Confocal image showing cytoplasmic staining on HeLa cell line.

The nuclear counter stain is DAPI (blue). Tubulin is detected with Anti-alpha Tubulin mouse MAb ([ab7291](#)) at 1/1000 dilution followed by Goat Anti-Mouse IgG H&L (Alexa Fluor[®] 594) ([ab150120](#)) secondary antibody at 1/1000 dilution (red).

The negative controls are as follows:

-ve control 1: ab205534 at 1/100 dilution, followed by Goat Anti-Mouse IgG H&L (Alexa Fluor[®] 594) ([ab150120](#)) secondary antibody at 1/1000 dilution.

-ve control 2: Anti-alpha Tubulin mouse MAb ([ab7291](#)) at 1/1000 dilution, followed by Goat Anti-Rabbit IgG H&L (Alexa Fluor[®] 488) ([ab150077](#)) secondary antibody at 1/1000 dilution.



Immunocytochemistry/ Immunofluorescence - Anti-FXYD3 antibody [EPR17160] (ab205534)

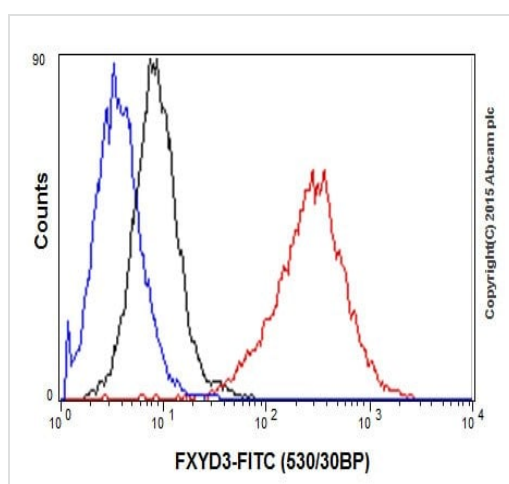
Immunofluorescent analysis of 4% paraformaldehyde-fixed, 0.1% Triton X-100 permeabilized HT-29 (Human colorectal adenocarcinoma cell line) cells labeling FXYD3 with ab205534 at 1/100 dilution, followed by Goat Anti-Rabbit IgG H&L (Alexa Fluor® 488) ([ab150077](#)) secondary antibody at 1/1000 dilution (green). Confocal image showing cytoplasmic staining on HT-29 cell line.

The nuclear counter stain is DAPI (blue). Tubulin is detected with Anti-alpha Tubulin mouse MAb ([ab7291](#)) at 1/1000 dilution followed by Goat Anti-Mouse IgG H&L (Alexa Fluor® 594) ([ab150120](#)) secondary antibody at 1/1000 dilution (red).

The negative controls are as follows:

-ve control 1: ab205534 at 1/100 dilution, followed by Goat Anti-Mouse IgG H&L (Alexa Fluor® 594) ([ab150120](#)) secondary antibody at 1/1000 dilution.

-ve control 2: Anti-alpha Tubulin mouse MAb ([ab7291](#)) at 1/1000 dilution, followed by Goat Anti-Rabbit IgG H&L (Alexa Fluor® 488) ([ab150077](#)) secondary antibody at 1/1000 dilution.



Flow Cytometry (Intracellular) - Anti-FXYD3 antibody [EPR17160] (ab205534)

Intracellular flow cytometric analysis of 4% paraformaldehyde-fixed MCF7 (Human breast adenocarcinoma cell line) cells labeling FXYD3 with ab205534 at 1/60 dilution (red) compared with a rabbit monoclonal IgG isotype control ([ab172730](#); black) and an unlabelled control (cells without incubation with primary antibody and secondary antibody; blue). Goat anti rabbit IgG (FITC) at 1/500 dilution was used as the secondary antibody.

Why choose a recombinant antibody?



Research with confidence
Consistent and reproducible results



Long-term and scalable supply
Recombinant technology



Success from the first experiment
Confirmed specificity



Ethical standards compliant
Animal-free production

Anti-FXYD3 antibody [EPR17160] (ab205534)

Please note: All products are "FOR RESEARCH USE ONLY. NOT FOR USE IN DIAGNOSTIC PROCEDURES"

Our Abpromise to you: Quality guaranteed and expert technical support

- Replacement or refund for products not performing as stated on the datasheet
- Valid for 12 months from date of delivery
- Response to your inquiry within 24 hours
- We provide support in Chinese, English, French, German, Japanese and Spanish
- Extensive multi-media technical resources to help you
- We investigate all quality concerns to ensure our products perform to the highest standards

If the product does not perform as described on this datasheet, we will offer a refund or replacement. For full details of the Abpromise, please visit <https://www.abcam.cn/abpromise> or contact our technical team.

Terms and conditions

- Guarantee only valid for products bought direct from Abcam or one of our authorized distributors