


Anti-FRYL antibody ab95065

★★★★★ [3 Abreviews](#) [3 References](#) [2 图像](#)

概述

产品名称	Anti-FRYL抗体
描述	兔多克隆抗体to FRYL
宿主	Rabbit
经测试应用	适用于: WB, IP
种属反应性	与反应: Mouse, Human 预测可用于: Rat 
免疫原	Synthetic peptide, corresponding to a region within amino acids 2600-2650 of Human FRYL (NP_055845.1).
阳性对照	HeLa whole cell lysate (ab150035), 293T cell lysate, Mouse NIH3T3 cell lysate,
常规说明	<p>The Life Science industry has been in the grips of a reproducibility crisis for a number of years. Abcam is leading the way in addressing this with our range of recombinant monoclonal antibodies and knockout edited cell lines for gold-standard validation. Please check that this product meets your needs before purchasing.</p> <p>If you have any questions, special requirements or concerns, please send us an inquiry and/or contact our Support team ahead of purchase. Recommended alternatives for this product can be found below, along with publications, customer reviews and Q&As</p>

性能

形式	Liquid
存放说明	Shipped at 4°C. Upon delivery aliquot and store at -20°C. Avoid freeze / thaw cycles.
存储溶液	pH: 6.8 Preservative: 0.09% Sodium azide Constituents: 0.1% BSA, Tris buffered saline
纯度	Immunogen affinity purified
克隆	多克隆
同种型	IgG

应用

The Abpromise guarantee

Abpromise™ 承诺保证使用 ab95065 于以下的经测试应用

“应用说明”部分 下显示的仅为推荐的起始稀释度;实际最佳的稀释度/浓度应由使用者检定。

应用	Ab评论	说明
WB	★★★★★ (1)	1/2000 - 1/10000. Predicted molecular weight: 340 kDa.
IP	★★★★★ (1)	Use at 2-5 µg/mg of lysate.

靶标

功能

Plays a key role in maintaining the integrity of polarized cell extensions during morphogenesis, regulates the actin cytoskeleton and plays a key role in patterning sensory neuron dendritic fields by promoting avoidance between homologous dendrites as well as by limiting dendritic branching (By similarity). May function as a transcriptional activator.

组织特异性

Widely expressed with higher expression in colon, placenta, brain and cells of lymphoid origin.

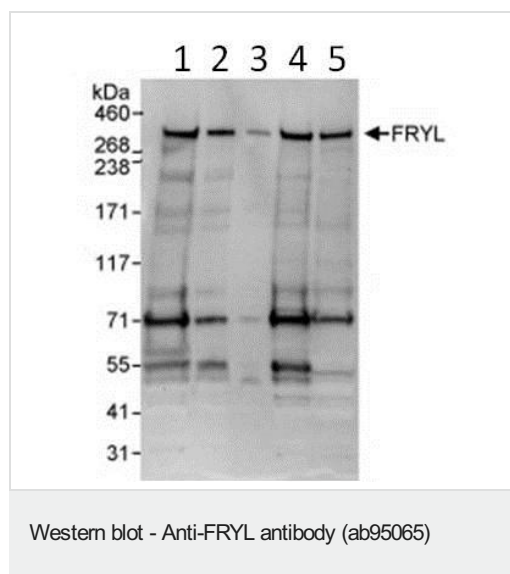
疾病相关

A chromosomal aberration involving FRYL is found in treatment-related acute lymphoblastic leukemia (ALL). Translocation t(4;11)(p12;q23) that forms a KMT2A/MLL1-FRYL fusion protein.

序列相似性

Belongs to the furry protein family.

图片



All lanes : Anti-FRYL antibody (ab95065) at 0.04 µg/ml

Lane 1 : HeLa whole cell lysate at 50 µg

Lane 2 : HeLa whole cell lysate at 15 µg

Lane 3 : HeLa whole cell lysate at 5 µg

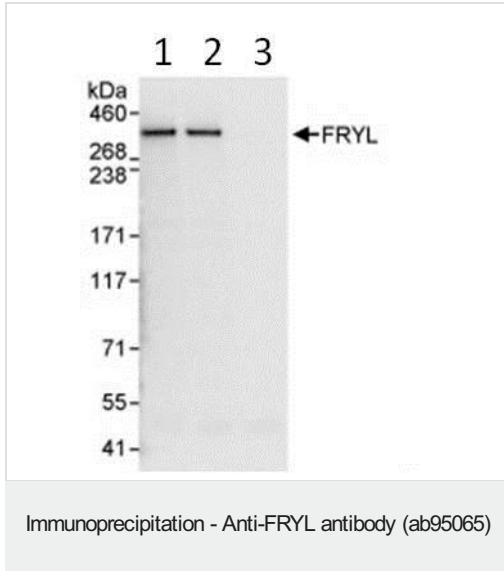
Lane 4 : 293T cell lysate at 50 µg

Lane 5 : Mouse NIH3T3 cell lysate at 50 µg

Developed using the ECL technique.

Predicted band size: 340 kDa

Exposure time: 10 seconds



Lane 1: Detection of FRYL by Immunoprecipitation from HeLa whole cell lysate (1 mg for IP, 20% of IP loaded), using ab95065 at 3 µg/mg lysate for IP.

Lane 2: Immunoprecipitation from HeLa whole cell lysate (1 mg for IP, 20% of IP loaded), using an antibody which recognized a downstream epitope of FRYL.

Lane 3: Immunoprecipitation from HeLa whole cell lysate (1 mg for IP, 20% of IP loaded), using Control IgG.

Subsequent Western blot detection used ab95065 at 1 µg/ml.

Developed using the ECL technique with an exposure time of 1 seconds.

Please note: All products are "FOR RESEARCH USE ONLY. NOT FOR USE IN DIAGNOSTIC PROCEDURES"

Our Abpromise to you: Quality guaranteed and expert technical support

- Replacement or refund for products not performing as stated on the datasheet
- Valid for 12 months from date of delivery
- Response to your inquiry within 24 hours
- We provide support in Chinese, English, French, German, Japanese and Spanish
- Extensive multi-media technical resources to help you
- We investigate all quality concerns to ensure our products perform to the highest standards

If the product does not perform as described on this datasheet, we will offer a refund or replacement. For full details of the Abpromise, please visit <https://www.abcam.cn/abpromise> or contact our technical team.

Terms and conditions

- Guarantee only valid for products bought direct from Abcam or one of our authorized distributors