

Anti-Flotillin 2/ESA antibody ab96507

★★★★★ [1 Abreviews](#) [6 References](#) [7 图像](#)

概述

产品名称	Anti-Flotillin 2/ESA抗体
描述	兔多克隆抗体to Flotillin 2/ESA
宿主	Rabbit
经测试应用	适用于: WB, IHC-P, ICC/IF, IP
种属反应性	与反应: Mouse, Rat, Human
免疫原	Synthetic peptide corresponding to Human Flotillin 2/ESA aa 365-428 (C terminal). Database link: Q14254
阳性对照	WB: HeLa. Mouse brain lysate. Rat brain lysate. IP: Human HeLa whole cell lysate. IHC-P: human lung cancer. ICC/IF: HeLa S3 cells.
常规说明	<p>The Life Science industry has been in the grips of a reproducibility crisis for a number of years. Abcam is leading the way in addressing this with our range of recombinant monoclonal antibodies and knockout edited cell lines for gold-standard validation. Please check that this product meets your needs before purchasing.</p> <p>If you have any questions, special requirements or concerns, please send us an inquiry and/or contact our Support team ahead of purchase. Recommended alternatives for this product can be found below, along with publications, customer reviews and Q&As</p>

性能

形式	Liquid
存放说明	Shipped at 4°C. Store at +4°C short term (1-2 weeks). Upon delivery aliquot. Store at -20°C or -80°C. Avoid freeze / thaw cycle.
存储溶液	pH: 7.00 Preservative: 0.01% Thimerosal (merthiolate) Constituents: 79.99% PBS, 20% Glycerol (glycerin, glycerine)
纯度	Immunogen affinity purified
克隆	多克隆
同种型	IgG

应用

The Abpromise guarantee

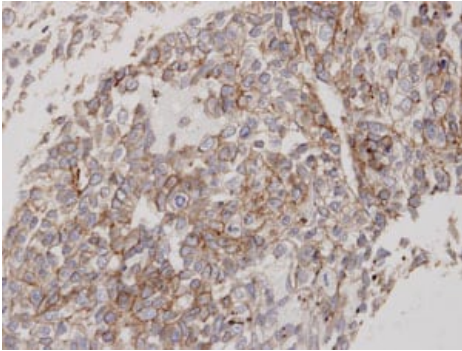
Abpromise™承诺保证使用ab96507于以下的经测试应用

“应用说明”部分 下显示的仅为推荐的起始稀释度;实际最佳的稀释度/浓度应由使用者检定。

应用	Ab评论	说明
WB		1/500 - 1/3000. Predicted molecular weight: 47 kDa.
IHC-P		1/100 - 1/1000. Antigen retrieval is not essential but may optimise staining.
ICC/IF		1/100 - 1/1000.
IP	★★★★★ (1)	1/100 - 1/500.

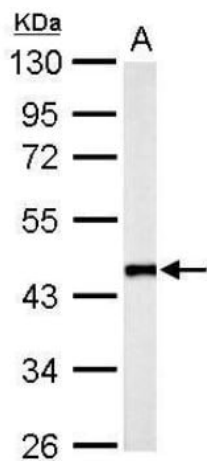
靶标	
功能	May act as a scaffolding protein within caveolar membranes, functionally participating in formation of caveolae or caveolae-like vesicles. May be involved in epidermal cell adhesion and epidermal structure and function.
组织特异性	In skin, expressed in epidermis and epidermal appendages but not in dermis. Expressed in all layers of the epidermis except the basal layer. In hair follicles, expressed in the suprabasal layer but not the basal layer. Also expressed in melanoma and carcinoma cell lines, fibroblasts and foreskin melanocytes.
序列相似性	Belongs to the band 7/mec-2 family. Flotillin subfamily.
细胞定位	Cell membrane. Membrane > caveola. Endosome. Membrane-associated protein of caveolae.

图片



Immunohistochemical analysis of paraffin-embedded human lung cancer using ab96507 at 1:100 dilution. Antigen Retrieval: Trilogy™ (EDTA based, pH 8.0) buffer, 15min.

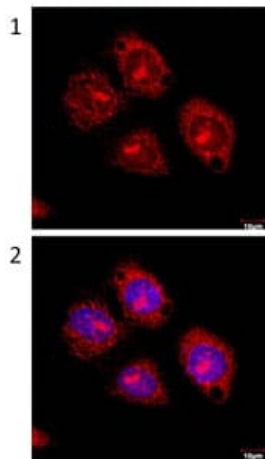
Immunohistochemistry (Formalin/PFA-fixed paraffin-embedded sections) - Anti-Flotillin 2/ESA antibody (ab96507)



Western blot - Anti-Flotillin 2/ESA antibody
(ab96507)

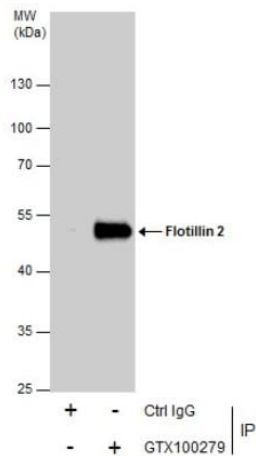
Anti-Flotillin 2/ESA antibody (ab96507) at 1/1000 dilution + Mouse
brain lysate at 50 µg

Predicted band size: 47 kDa



Immunocytochemistry/ Immunofluorescence - Anti-
Flotillin 2/ESA antibody (ab96507)

Immunofluorescence analysis of paraformaldehyde-fixed HeLa S3
cells, using ab96507 at 1:100 dilution. Image 2: Merged with DNA
probe.

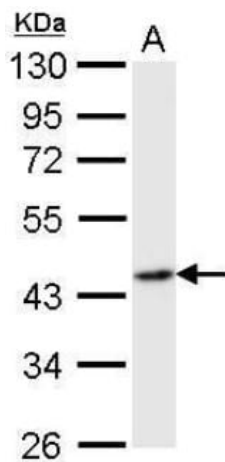


Immunoprecipitation - Anti-Flotillin 2/ESA antibody (ab96507)

Flotillin 2 was immunoprecipitated from 5µ of HeLa whole cell lysate with ab96507. Western blot was performed from the immunoprecipitate using ab96507. EasyBlot anti-Rabbit IgG, was used as secondary antibody.

Lane 1: HeLa lysate 5µg (Input).

Lane 2: ab96507 IP in HeLa lysate.

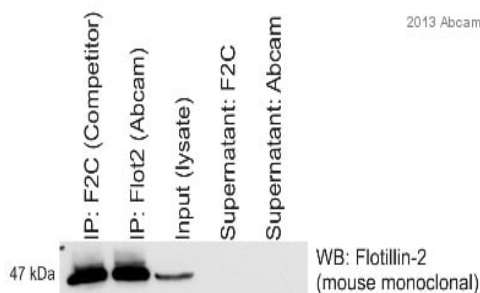


Western blot - Anti-Flotillin 2/ESA antibody (ab96507)

Anti-Flotillin 2/ESA antibody (ab96507) at 1/1000 dilution + Rat brain lysate at 50 µg

Predicted band size: 47 kDa

10% SDS-PAGE



Immunoprecipitation - Anti-Flotillin 2/ESA antibody (ab96507)

This image is courtesy of an Abreview submitted by Prof Ritva Tikkanen

Flotillin 2/ESA immunoprecipitation from Human HeLa whole cell lysate using ab96507. 750 µg of cell lysate was incubated with primary antibody (1/500) and matrix (Protein A) and incubated for 16 hours at 4°C.

Lane 1 : anti-Flotillin 2/ESA IP (using non-Abcam antibody)

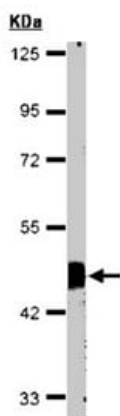
Lane 2 : anti-Flotillin 2/ESA IP (using ab96507)

Lane 3 : Input (HeLa cell lysate)

Lane 4 : Supernatant IP (using non-Abcam antibody)

Lane 5 : Supernatant IP (using ab96507)

Western blot detection : mouse anti-Flotillin 2/ESA antibody + HRP donkey anti-mouse polyclonal secondary antibody



Anti-Flotillin 2/ESA antibody (ab96507) at 1/1000 dilution + HeLa
S3 whole cell lysate at 30 µg

Predicted band size: 47 kDa

10% SDS PAGE

Western blot - Anti-Flotillin 2/ESA antibody
(ab96507)

Please note: All products are "FOR RESEARCH USE ONLY. NOT FOR USE IN DIAGNOSTIC PROCEDURES"

Our Abpromise to you: Quality guaranteed and expert technical support

- Replacement or refund for products not performing as stated on the datasheet
- Valid for 12 months from date of delivery
- Response to your inquiry within 24 hours
- We provide support in Chinese, English, French, German, Japanese and Spanish
- Extensive multi-media technical resources to help you
- We investigate all quality concerns to ensure our products perform to the highest standards

If the product does not perform as described on this datasheet, we will offer a refund or replacement. For full details of the Abpromise, please visit <https://www.abcam.cn/abpromise> or contact our technical team.

Terms and conditions

- Guarantee only valid for products bought direct from Abcam or one of our authorized distributors