

### Anti-FLI1 antibody [EPR4645] ab124791

**重组** RabMAb

★★★★★ [1 Abreviews](#) [1 References](#) [3 图像](#)

#### 概述

产品名称	Anti-FLI1抗体[EPR4645]
描述	兔单克隆抗体[EPR4645] to FLI1
宿主	Rabbit
特异性	This product does not cross-react with ERG.
经测试应用	<b>适用于:</b> WB <b>不适用于:</b> Flow Cyt, ICC/IF, IHC-P or IP
种属反应性	<b>与反应:</b> Mouse, Rat, Human
免疫原	Synthetic peptide within Human FLI1 aa 50-150. The exact sequence is proprietary.
阳性对照	Raw264.7, U937, Jurkat, K562 and C6 cell lysates. FLI1 recombinant protein.
常规说明	This product is a recombinant monoclonal antibody, which offers several advantages including: <ul style="list-style-type: none"> <li>- High batch-to-batch consistency and reproducibility</li> <li>- Improved sensitivity and specificity</li> <li>- Long-term security of supply</li> <li>- Animal-free production</li> </ul> For more information <a href="#">see here</a> . Our RabMAb <sup>®</sup> technology is a patented hybridoma-based technology for making rabbit monoclonal antibodies. For details on our patents, please refer to <a href="#">RabMAb<sup>®</sup> patents</a> .

#### 性能

形式	Liquid
存放说明	Shipped at 4°C. Store at -20°C. Stable for 12 months at -20°C.
存储溶液	pH: 7.20 Preservative: 0.05% Sodium azide Constituents: 0.1% BSA, 40% Glycerol (glycerin, glycerine), 9.85% Tris glycine, 50% Tissue culture supernatant
纯度	Protein A purified
克隆	单克隆
克隆编号	EPR4645

同种型IgG

应用

The Abpromise guarantee Abpromise™承诺保证使用ab124791于以下的经测试应用  
“应用说明”部分 下显示的仅为推荐的起始稀释度;实际最佳的稀释度/浓度应由使用者检定。

应用	Ab评论	说明
WB	★★★★★ (1)	1/1000 - 1/10000. Predicted molecular weight: 51 kDa.

应用说明Is unsuitable for Flow Cyt, ICC/IF, IHC-P or IP.

靶标

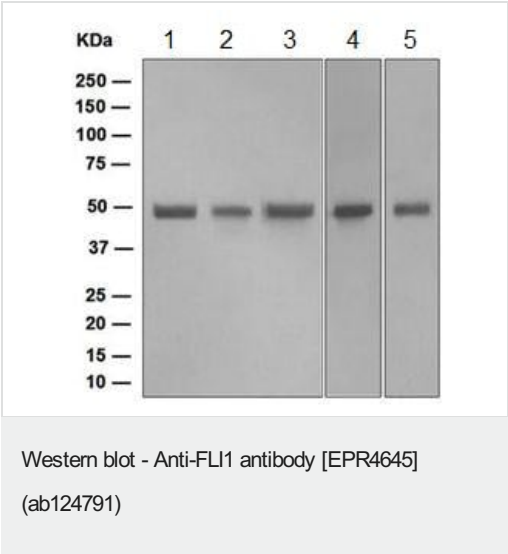
功能Sequence-specific transcriptional activator. Recognizes the DNA sequence 5'-C[CA]GGAAGT-3'.

疾病相关Defects in FLI1 are a cause of Ewing sarcoma (ES) [MM:612219]. A highly malignant, metastatic, primitive small round cell tumor of bone and soft tissue that affects children and adolescents. It belongs to the Ewing sarcoma family of tumors, a group of morphologically heterogeneous neoplasms that share the same cytogenetic features. They are considered neural tumors derived from cells of the neural crest. Ewing sarcoma represents the less differentiated form of the tumors. Note=A chromosomal aberration involving FLI1 is found in patients with Erwing sarcoma. Translocation t(11;22)(q24;q12) with EWSR1.

序列相似性Belongs to the ETS family.  
Contains 1 ETS DNA-binding domain.  
Contains 1 PNT (pointed) domain.

细胞定位Nucleus.

图片



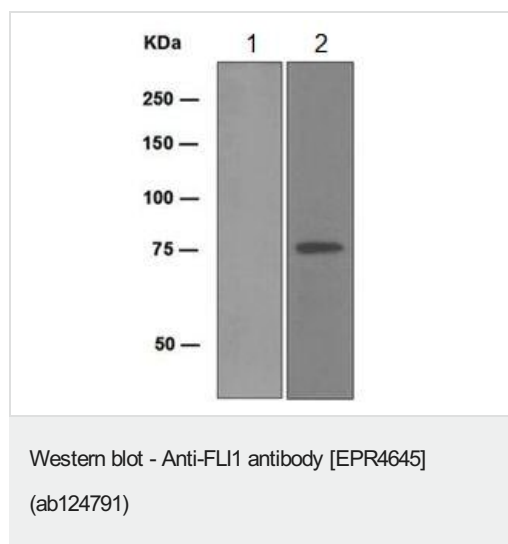
All lanes : Anti-FLI1 antibody [EPR4645] (ab124791) at 1/1000 dilution

- Lane 1 : Raw264.7 cell lysate
- Lane 2 : U937 cell lysate
- Lane 3 : Jurkat cell lysate
- Lane 4 : K562 cell lysate
- Lane 5 : C6 cell lysate

Lysates/proteins at 10 µg per lane.

Secondary  
All lanes : Goat anti-Rabbit HRP at 1/2000 dilution

Predicted band size: 51 kDa



**All lanes :** Anti-FLI1 antibody [EPR4645] (ab124791) at 1/1000 dilution

**Lane 1 :** ERG recombinant protein

**Lane 2 :** FLI1 recombinant protein

Lysates/proteins at 0.01 µg per lane.

#### Secondary

**All lanes :** Goat anti-Rabbit HRP at 1/2000 dilution

**Predicted band size:** 51 kDa

Why choose a recombinant antibody?

<p><b>Research with confidence</b> Consistent and reproducible results</p>	<p><b>Long-term and scalable supply</b> Recombinant technology</p>
<p><b>Success from the first experiment</b> Confirmed specificity</p>	<p><b>Ethical standards compliant</b> Animal-free production</p>

Anti-FLI1 antibody [EPR4645] (ab124791)

**Please note:** All products are "FOR RESEARCH USE ONLY. NOT FOR USE IN DIAGNOSTIC PROCEDURES"

#### Our Abpromise to you: Quality guaranteed and expert technical support

- Replacement or refund for products not performing as stated on the datasheet
- Valid for 12 months from date of delivery
- Response to your inquiry within 24 hours
- We provide support in Chinese, English, French, German, Japanese and Spanish
- Extensive multi-media technical resources to help you
- We investigate all quality concerns to ensure our products perform to the highest standards

If the product does not perform as described on this datasheet, we will offer a refund or replacement. For full details of the Abpromise, please visit <https://www.abcam.cn/abpromise> or contact our technical team.

## Terms and conditions

---

- Guarantee only valid for products bought direct from Abcam or one of our authorized distributors