

Anti-FKBP52 antibody [Hi52C] ab59460

3 References 4 图像

概述	
产品名称	Anti-FKBP52抗体[Hi52C]
描述	小鼠单克隆抗体[Hi52C] to FKBP52
宿主	Mouse
经测试应用	适用于: Flow Cyt, IHC-P, ICC/IF
种属反应性	与反应: Mouse, Human
免疫原	Synthetic peptide corresponding to human FKBP52
阳性对照	IHC-P: Human prostate tissue; Mouse backskin tissue. ICC/IF: HeLa cells. Flow Cyt: HeLa cells.
常规说明	<p>The Life Science industry has been in the grips of a reproducibility crisis for a number of years. Abcam is leading the way in addressing this with our range of recombinant monoclonal antibodies and knockout edited cell lines for gold-standard validation. Please check that this product meets your needs before purchasing.</p> <p>If you have any questions, special requirements or concerns, please send us an inquiry and/or contact our Support team ahead of purchase. Recommended alternatives for this product can be found below, along with publications, customer reviews and Q&As</p>
性能	
形式	Liquid
存放说明	Shipped at 4°C. Store at -20°C. Stable for 12 months at -20°C.
存储溶液	Preservative: 0.09% Sodium azide Constituents: PBS, 50% Glycerol
纯度	Protein G purified
克隆	单克隆
克隆编号	Hi52C
同种型	IgG2a
应用	

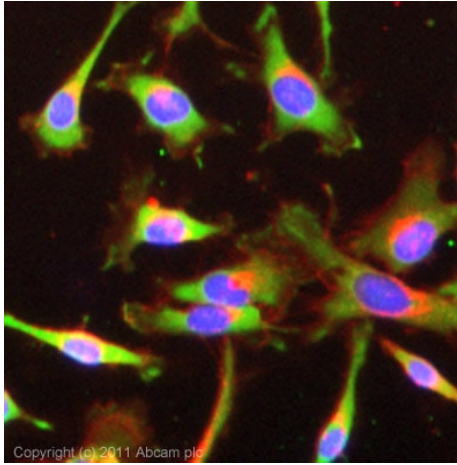
“应用说明”部分 下显示的仅为推荐的起始稀释度;实际最佳的稀释度/浓度应由使用者检定。

应用	Ab评论	说明
Flow Cyt		Use 1-2µg for 10 ⁶ cells. ab170190 - Mouse monoclonal IgG1, is suitable for use as an isotype control with this antibody.
IHC-P		Use at an assay dependent concentration.
ICC/IF		Use a concentration of 10 µg/ml.

靶标

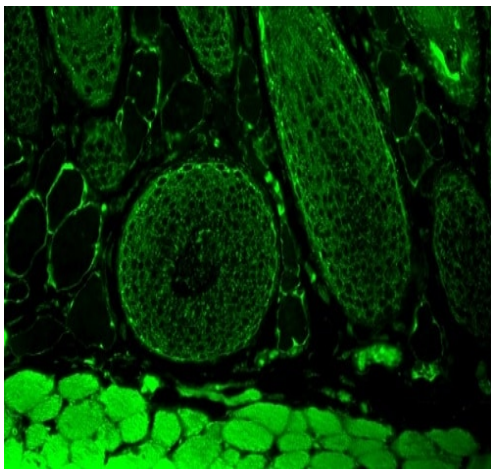
功能	Immunophilin protein with PPlase and co-chaperone activities (By similarity). Component of unliganded steroid receptors heterocomplexes through interaction with heat-shock protein 90 (HSP90). May play a role in the intracellular trafficking of heterooligomeric forms of steroid hormone receptors between cytoplasm and nuclear compartments (By similarity). The isomerase activity controls neuronal growth cones via regulation of TRPC1 channel opening. Acts also as a regulator of microtubule dynamics by inhibiting MAPT/TAU ability to promote microtubule assembly.
组织特异性	Widely expressed.
序列相似性	Contains 2 PPlase FKBP-type domains. Contains 3 TPR repeats.
结构域	The PPlase activity is mainly due to the first PPlase FKBP-type domain (1-138 AA). The C-terminal region (AA 375-458) is required to prevent tubulin polymerization. The chaperone activity resides in the C-terminal region, mainly between amino acids 264 and 400.
翻译后修饰	Phosphorylation by CK2 results in loss of HSP90 binding activity (By similarity). Phosphorylated upon DNA damage, probably by ATM or ATR.
细胞定位	Cytoplasm > cytosol. Nucleus. Cytoplasm > cytoskeleton.

图片



Immunocytochemistry/ Immunofluorescence - Anti-FKBP52 antibody [Hi52C] (ab59460)

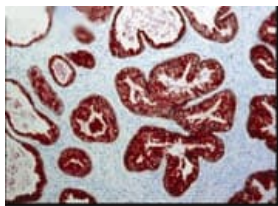
ICC/IF image of ab59460 stained HeLa cells. The cells were 100% methanol fixed (5 min) and then incubated in 1%BSA / 10% normal goat serum / 0.3M glycine in 0.1% PBS-Tween for 1h to permeabilise the cells and block non-specific protein-protein interactions. The cells were then incubated with the antibody (ab59460, 10µg/ml) overnight at +4°C. The secondary antibody (green) was [ab96879](#) Dylight 488 goat anti-mouse IgG (H+L) used at a 1/250 dilution for 1h. Alexa Fluor® 594 WGA was used to label plasma membranes (red) at a 1/200 dilution for 1h. DAPI was used to stain the cell nuclei (blue) at a concentration of 1.43µM.



Immunohistochemistry (Formalin/PFA-fixed paraffin-embedded sections) - Anti-FKBP52 antibody [Hi52C] (ab59460)

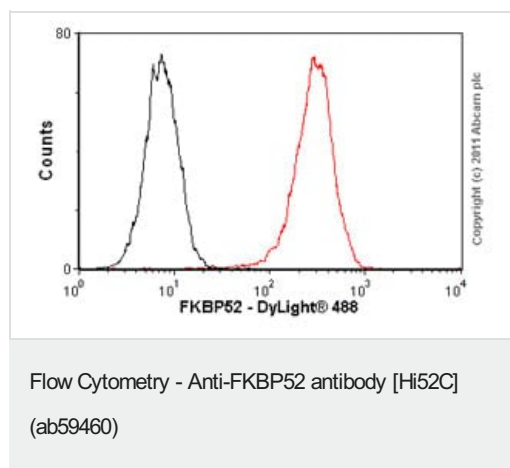
Paraffin-embedded mouse backskin tissue stained for FKBP52 using ab59460 at 1/100 dilution in immunohistochemical analysis.

Fixation: Bouin's Fixative. Secondary Antibody: FITC Goat Anti-Mouse (green) at 1/50 dilution for 1 hour at room temperature.



Immunohistochemistry (Formalin/PFA-fixed paraffin-embedded sections) - Anti-FKBP52 antibody [Hi52C] (ab59460)

ab59460 at 1/100 dilution staining FKBP52 in prostate tissue section by Immunohistochemistry (Bouin's fixative fixed paraffin-embedded tissue section). Antigen retrieval was done by microwave in citrate buffer. A HRP conjugated goat anti mouse secondary was used at 1/10 dilution.



Overlay histogram showing HeLa cells stained with ab59460 (red line). The cells were fixed with 80% methanol (5 min) and then permeabilized with 0.1% PBS-Tween for 20 min. The cells were then incubated in 1x PBS / 10% normal goat serum / 0.3M glycine to block non-specific protein-protein interactions followed by the antibody (ab59460, 1µg/1x10⁶ cells) for 30 min at 22°C. The secondary antibody used was DyLight® 488 goat anti-mouse IgG (H+L) ([ab96879](#)) at 1/500 dilution for 30 min at 22°C. Isotype control antibody (black line) was mouse IgG1 [ICIGG1] ([ab91353](#), 2µg/1x10⁶ cells) used under the same conditions. Acquisition of >5,000 events was performed. This antibody gave a positive signal in Hela cells fixed with 4% paraformaldehyde (10 min)/permeabilized with 0.1% PBS-Tween for 20 min used under the same conditions.

Please note: All products are "FOR RESEARCH USE ONLY. NOT FOR USE IN DIAGNOSTIC PROCEDURES"

Our Abpromise to you: Quality guaranteed and expert technical support

- Replacement or refund for products not performing as stated on the datasheet
- Valid for 12 months from date of delivery
- Response to your inquiry within 24 hours
- We provide support in Chinese, English, French, German, Japanese and Spanish
- Extensive multi-media technical resources to help you
- We investigate all quality concerns to ensure our products perform to the highest standards

If the product does not perform as described on this datasheet, we will offer a refund or replacement. For full details of the Abpromise, please visit <https://www.abcam.cn/abpromise> or contact our technical team.

Terms and conditions

- Guarantee only valid for products bought direct from Abcam or one of our authorized distributors